



INSTRUCTIONS

-J03234

2011-08-12

MUSTACHE ENGINE GUARD KIT

GENERAL

Kit Number

49140-05B, 49440-10

Models

For model fitment information, see the P&A Retail Catalog or the Parts and Accessories section of www.harley-davidson.com (English only).

Kit Contents

See Figure 4 and Table 1.

INSTALLATION

⚠ WARNING

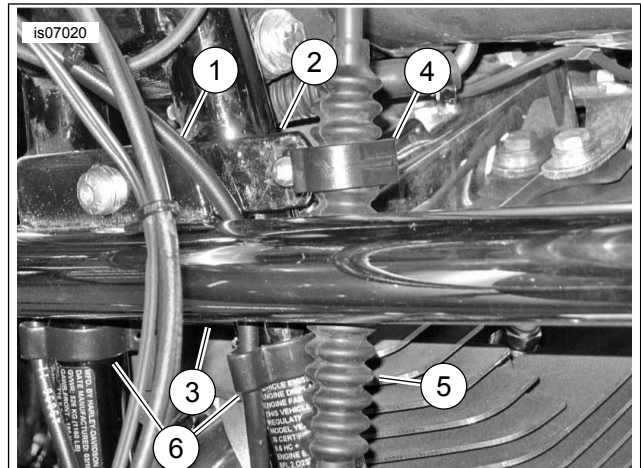
Front and/or rear guard(s) can provide limited leg and cosmetic vehicle protection under unique circumstances. (Fall over while stopped, very slow speed slide.) It is not made or intended to provide protection from bodily injury in a collision with another vehicle or any other object. (00022b)

1. See Figure 1. Check the position of the clutch cable clip (4). The clip should extend outboard. If it does not, rotate the clip 180 degrees as follows:
 - a. Open clutch cable clip (4) on left downtube (2) and remove the clutch cable (5) from the clip.
 - b. Loosen the screw holding the clutch cable clip.
 - c. Rotate the clip 180 degrees.
 - d. Tighten the clutch cable clip screw.

NOTE

See Figure 1. When installing engine guard on models with ABS brakes, route the brake line (1) outboard of the frame tube and behind the engine guard (3) as shown. Rotate the brake line retaining clips (6) as shown to allow proper brake line routing.

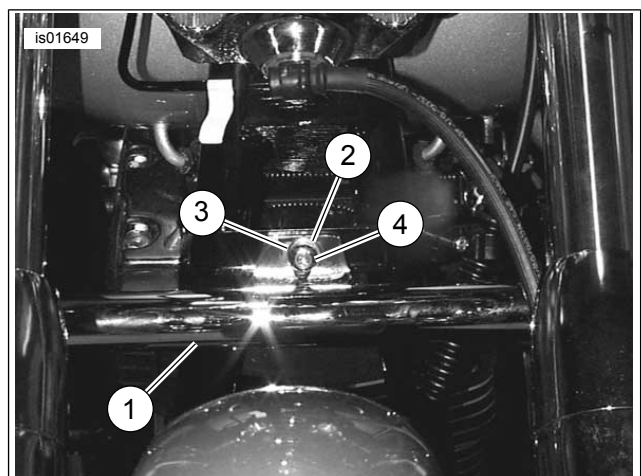
- e. Install clutch cable back into the clutch cable clip.
2. See Figure 2. Hold engine guard (1) in place, aligning the hole in top center mounting flange of guard with the hole in cross brace, which is located between the front downtubes just below the steering head.
 3. Install washer (3) onto screw threads and insert screw (4) through the holes from the front. Install second flat washer over screw threads and thread hex nut (2) onto screw. Tighten finger-tight.



1. ABS brake line
2. Down tube
3. Engine guard
4. Clutch cable clip
5. Clutch cable
6. Brake line clip

Figure 1. Brake Line and Clutch Cable Routing

4. See Figure 3. On the right side, attach engine guard (1) to footboard mounting bracket (2) with screw (6), washer (5), and locknut (4) from kit. Tighten finger-tight.
5. Repeat step 4 for left side footboard mounting bracket (3). Tighten screw to 44 N·m (33 ft-lbs).
6. Tighten right side screw to 44 N·m (33 ft-lbs).
7. Tighten top screw to 25 N·m (19 ft-lbs).



1. Engine guard
2. Hex nut (behind cross brace)
3. Washer (2)
4. Screw

Figure 2. Engine Guard Mounting Flange (Top Center)

-J03234



Many Harley-Davidson® Parts & Accessories are made of plastics and metals which can be recycled. Please dispose of materials responsibly.

1 / 2

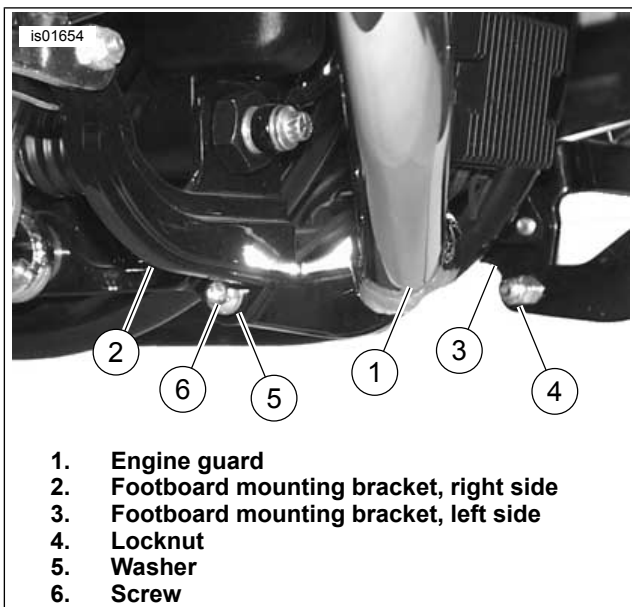


Figure 3. Engine Guard Lower Mounting (Right Side View)

SERVICE PARTS

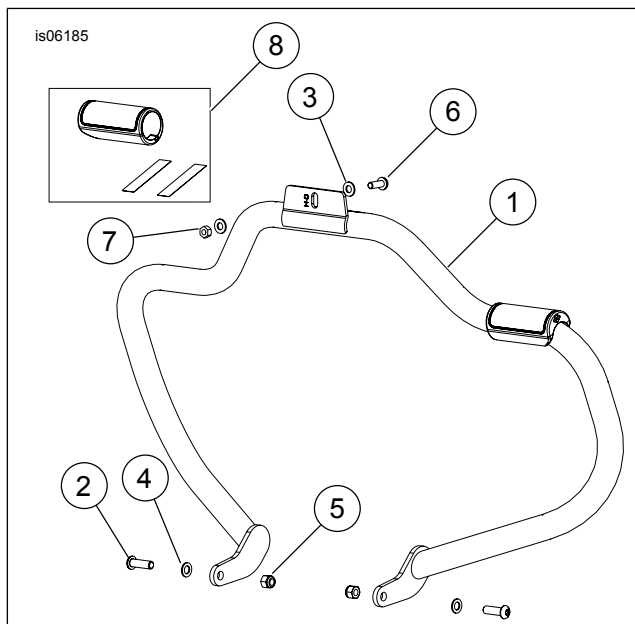


Figure 4. Service Parts: Mustache Engine Guard

Table 1. Service Parts: Mustache Engine Guard Kit

Item	Description (Quantity)	Part Number
1	Engine guard	Not Sold Separately
2	Screw, button head Torx 3/8-16 x 1-1/4 inch (2)	4188
3	Washer, flat type A 5/16 inch (2)	6702
4	Washer, 3/8 inch (2)	6812
5	Locknut, nylon 3/8-16 (2)	7778
6	Screw, pan head 5/16-18 x 7/8 inch	3655A
7	Hex nut, 5/16-18	7748W
8	Rubber pad service kit	97015-09