



# INSTRUCTIONS

J00737

2007-08-17



## TURN SIGNAL TRIM RINGS

### GENERAL

#### Kit Number

69740-01 and 69749-05

#### Models

For model fitment information, please see the P&A Retail Catalog or the Parts and Accessories section of [www.harley-davidson.com](http://www.harley-davidson.com) (English only).

#### Kit Contents

See Figure 1 and Table 1.

### INSTALLATION

1. Remove turn signal lens
2. Place O-ring (4) in groove between lens and turn signal housing.
3. Reinstall signal lens.
4. Install the trim ring (3) onto the turn signal. Notches on turn signal lens must be aligned with notches on trim ring.
5. Secure trim ring with the provided screw (1) and nut (2). Tighten securely.
6. Repeat Steps 1-5 for the other turn signal.

### SERVICE PARTS

See Figure 1 and Table 1.

Table 1. Service Parts: Turn Signal Trim Rings

Item	Description (Quantity)	Part Number
1	Screw	3824
2	Nut	8006
3	Trim Ring	Not Sold Separately
4	O-ring	11371
<b>Items mentioned in text but not included in kit:</b>		
A	Original lens and screw	
B	Turn signal housing	

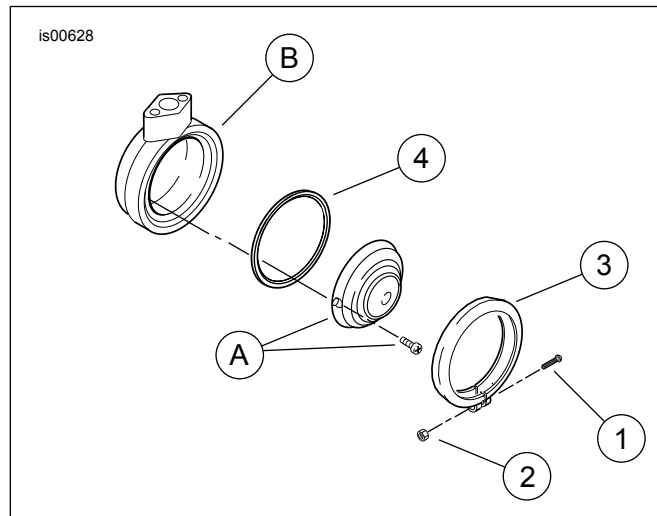


Figure 1. Service Parts: Turn Signal Trim Rings