



INSTRUCTIONS

J02500

2006-11-20



SOFTAIL CHROME REAR AXLE ADJUSTER AND COVER KIT

GENERAL

Kit Number

43429-02

Models

For model fitment information, please see the P&A Retail Catalog or the Parts and Accessories section of www.harley-davidson.com (English only).

This kit will not fit models equipped with accessory leather saddlebags or Saddlebag Support Bracket Kit, Part Number 90238-00.

Additional Parts Required

See Figure 1. If the axle nut is held in place by a cotter pin or spring clip, a Retaining Pin (7), Harley-Davidson Part Number 508 must be purchased separately. This item is available from a Harley-Davidson Dealer.

LOCTITE[®] 243 (blue) (Harley-Davidson Part Number 99642-97) and LOCTITE[®] Anti-Seize Lubricant (Harley-Davidson Part Number 98960-97) must be purchased separately. These items are available from a Harley-Davidson Dealer.

⚠ WARNING

Rider and passenger safety depend upon the correct installation of this kit. Use the appropriate service manual procedures. If the procedure is not within your capabilities or you do not have the correct tools, have a Harley-Davidson dealer perform the installation. Improper installation of this kit could result in death or serious injury. (00333b)

NOTE

This instruction sheet references Service Manual information. A Service Manual for your model motorcycle is required for this installation and is available from a Harley-Davidson Dealer.

Kit Contents

See Figure 2 and Table 1.

INSTALLATION

⚠ WARNING

Perform this installation when the engine is cool. Working on or near the exhaust system when the engine is hot could result in severe burns. (00311b)

1. Block the motorcycle underneath the frame so the weight of the vehicle is off of the rear wheel, but do not raise the rear wheel off the ground.

2. Some models require loosening or removal of the muffler or mufflers in order to remove the rear axle. See the EXHAUST SYSTEM REMOVAL section of the Service Manual. Remove the saddlebags if desired for extra working clearance. See SADDLEBAG REMOVAL in the Service Manual.

3. See Figure 1. Remove the original axle adjustment bolts (1) and jam nuts (2) from both sides of the motorcycle and discard.

NOTE

On a bike that has been previously serviced, ensure that the axle has not been removed and re-installed from the left side (with the castle nut to the right of the wheel). If it has, the axle MUST be inserted from the right side of the motorcycle.

4. Remove the retaining pin (7), castle nut (5) and washer (4) from the left side of the axle (6). Discard the washer, but save the pin and nut for later re-assembly.

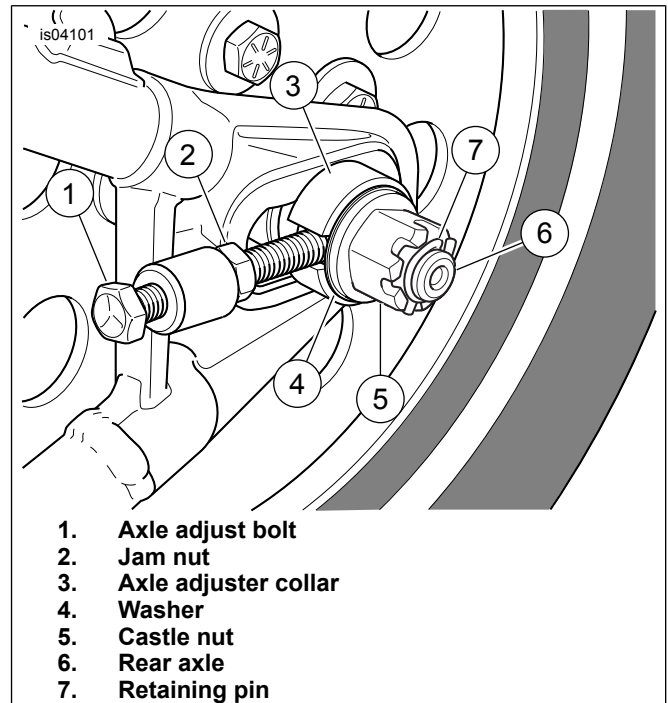


Figure 1. Rear Axle Hardware (Left Side Shown)

5. Tap the axle toward the right side of the motorcycle and remove. The belt adjuster collars (3) will fall loose as the axle is removed. The collars can be discarded. The wheel bearing spacers may also fall loose or be dislodged. Be sure to return these to their original position on the vehicle (short spacer on the right side, long spacer on the left).



6. Inspect axle components for damage or excessive wear, and replace as required.

⚠ WARNING

Check wheel bearing end play after tightening axle nut to specified torque. Excessive end play can adversely affect stability and handling and can cause loss of control, which could result in death or serious injury. (00285b)

7. Coat the axle with LOCTITE ANTI-SEIZE LUBRICANT and install:
 - a. See Figure 2. Slide one axle adjuster collar (2) from the kit onto the axle shaft.
 - b. From the right side, carefully insert the axle through the right rear fork, rear brake caliper bracket, short wheel bearing spacer and brake disc into the right side rear wheel bearing.
 - c. Continue sliding the axle through the rear wheel and out the left side bearing and belt sprocket, through the long wheel bearing spacer and left rear fork.
 - d. Slide the second axle adjuster collar (8) from the kit onto the axle shaft. Place the threaded spacer (4) onto the axle shaft, small bore first.
 - e. See Figure 1. Install the castle nut (5) onto the axle, but do not tighten at this time.
8. See Figure 2. Install the new axle adjustment bolts (3 and 9) from front to rear through the threaded holes in the rear forks.
9. Thread the chrome hex nuts (4 and 10) onto the axle adjustment bolts.
10. Line up the notches in the axle adjuster collars with the adjuster bolts. Thread the axle adjuster bolts in until they are approximately in their original position against the axle adjuster collars, but leave the hex nuts loose.

⚠ WARNING

Check vehicle alignment according to following procedures. Incorrect alignment can adversely affect stability and handling, which could result in death or serious injury. (00287a)

11. Align the rear wheel. Check that the center of the rear axle is equidistant from the center of the swing arm pivot shaft on each side. The measurements must be equal within 1/32 inch (0.794 mm). Adjust as necessary.
12. Adjust the rear belt tension. See REAR BELT DEFLECTION in the Service Manual. Tighten the chrome hex nuts.
13. Tighten the castle nut. Line up a slot in the nut with the hole in the axle, but DO NOT EXCEED 88.1 N·m (65 ft-lbs).
14. Apply LOCTITE 243 (blue) to the threads of the castle nut cover (12). Position the cover over the castle nut on the left side of the motorcycle, and thread it onto the spacer (11). Tighten to 27.1 N·m (20 ft-lbs).
15. Apply LOCTITE 243 (blue) to the threads of the set screw (6). Thread the set screw into the axle cover (5). Place the axle cover over the axle head on the right side of the motorcycle with the set screw on the underside. Tighten to 1.1–1.4 N·m (10–12 in-lbs).
16. Tighten or re-install any exhaust system components as necessary. See the EXHAUST SYSTEM INSTALLATION section of the Service Manual.

NOTICE

Wipe all fingerprints off of exhaust system components after installation and before starting engine. Oil from hands can leave permanent marks on exhaust system finish. (00346a)

17. Remove the vehicle from the blocks. Re-install the saddlebags if removed earlier. See SADDLEBAG INSTALLATION in the Service Manual.
18. Test ride vehicle for proper operation.

SERVICE PARTS

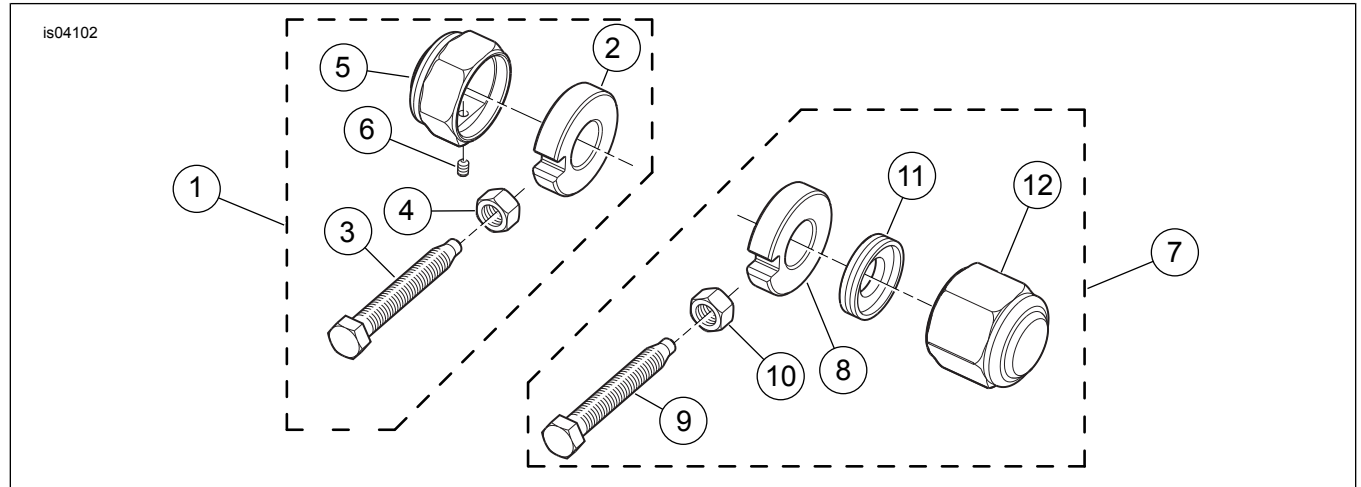


Figure 2. Service Parts: Chrome Rear Axle Adjuster and Cover

Table 1. Service Parts Table

Item	Description (Quantity)	Part Number	Item	Description (Quantity)	Part Number
1	Service Kit, Axle Adjuster and Axle Cover (Right, includes items 2-6)		7	Service Kit, Axle Adjuster and Axle Cover (Left, includes items 8-12)	
2	Collar, axle adjuster	Not Sold Separately	8	Collar, axle adjuster	Not Sold Separately
3	Bolt, rear axle adjustment	47632-02	9	Bolt, rear axle adjustment	47632-02
4	Nex nut (chrome)	94044-90T	10	Nex nut (chrome)	94044-90T
5	Cover, axle	Not Sold Separately	11	Spacer, threaded	Not Sold Separately
6	Set screw, hex socket, #10-24	Not Sold Separately	12	Cover, castle nut	Not Sold Separately