



INSTRUCTIONS

J02018

2015-06-02



REAR SADDLEBAG GUARDRAILS

GENERAL

Kit Number

49087-01, 49088-01

Models

For model fitment information, see the P&A Retail Catalog or harley-davidson.com (English only).

Installation Requirements

Separate purchase and installation of additional parts or accessories may be required for proper installation of this kit on your model motorcycle. See the P&A Retail Catalog or harley-davidson.com (English only) for a list of required parts or accessories for your model.

⚠ WARNING

Rider and passenger safety depend upon the correct installation of this kit. If the procedure is not within your capabilities or you do not have the correct tools, have a Harley-Davidson dealer perform the installation. Improper installation of this kit could result in death or serious injury. (00308b)

NOTE

This instruction sheet references service manual information. A service manual for your model motorcycle is required for this installation.

Kit Contents

See Figure 1 and Table 1.

INSTALLATION

Kit Number 49087-01

1. Remove and save fasteners that retain saddlebag guardrails.
2. Replace stock saddlebag guardrails with new guardrails from kit.
3. Screw in and torque each stock fastener as follows:
 - a. Four stock screws, Part No. 3678, using two new locknuts (1), Part No. 7667. Tighten each screw to 25.7 N·m (19 ft-lbs).
 - b. Two stock screws, Part No. 3601 using two new locknuts (2), Part No. 7686. Tighten each screw to 12.2 N·m (9 ft-lbs).

For Domestic FLHRC/I Vehicles Only. (Does not apply to Harley Davidson International (HDI) vehicles):

⚠ WARNING

Federal Motor Vehicle Safety Standard (FMVSS) 108 requires motorcycles to be equipped with rear and side reflectors. Be sure rear and side reflectors are properly mounted. Poor visibility of rider to other motorists can result in death or serious injury. (00336b)

4. See Service Parts illustration. Position reflector so it is centered on the vertical portion of the saddlebag guard 2.5 cm (1 in) above the top end of the lower bend where the radius turns upward. Measure and use a small piece of tape to mark location for attachment of the lower edge of the reflector at the 2.5 cm (1 in) mark.

NOTE

Reflectors are specific for each side. Reflectors have a flat end and a curved end. The curved end goes down. Top edge should be horizontal when positioned on guard. If not, reflector is for opposite side.

5. Remove protective tape backing from one reflector. Locate reflector above the 2.5 cm (1 in) mark. Apply reflector, using even pressure by rubbing back and forth on reflector. Repeat on other side.

Kit Number 49088-01

1. Remove and save fasteners that retain saddlebag guardrails.
2. Replace stock saddlebag guardrails with new guardrails from kit.
3. Using four hex socket button head screws (8) removed earlier, attach saddlebag guards using the remaining two existing holes in each guardrail.
4. Install and tighten each stock fastener.
 - a. Four stock screws, Part No. 3678, using two new locknuts (5), Part No. 7667. Tighten each screw to 25.7 N·m (19 ft-lbs).
 - b. Two stock screws, Part No. 3601 using two new locknuts (6), Part No. 7686. Tighten each screw to 12.2 N·m (9 ft-lbs).

SERVICE PARTS

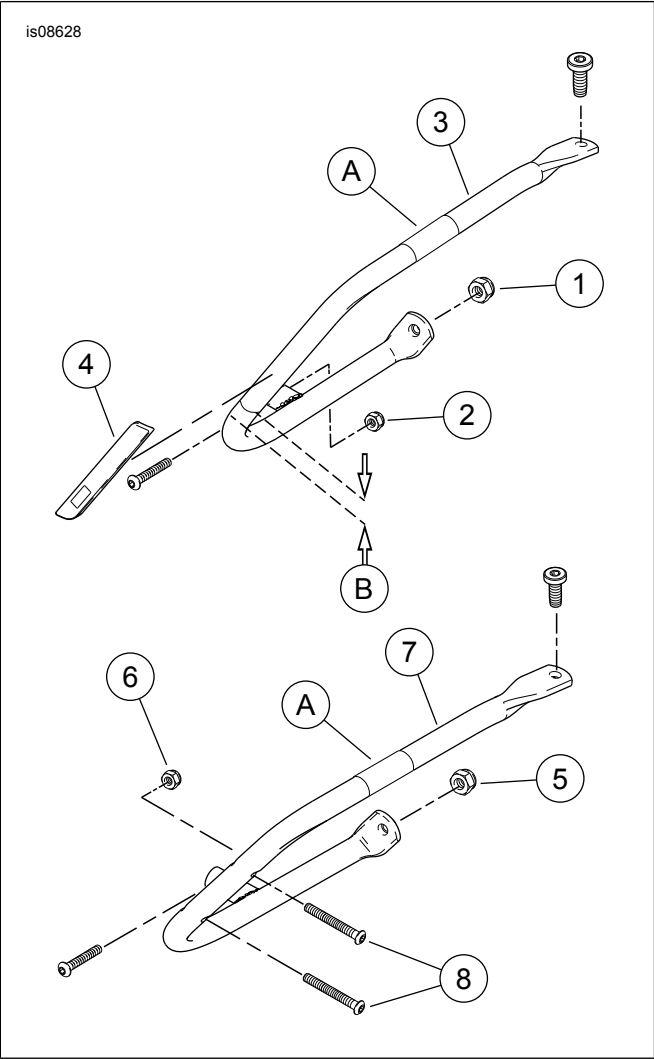


Figure 1. Rear Saddlebag Guardrails

Table 1. Service Parts

Item	Description (Quantity)	Part Number
Rear Saddlebag Guardrail Kit 49087-01		
1	Locknut (2)	7667
2	Locknut (2)	7686
3	Guard assembly, rear, right	49085-01
	Guard assembly, rear, left (not shown)	49082-01
4	Reflector, red, right	59370-98
	Reflector, red, left (not shown)	59371-98
Rear Saddlebag Guardrail Kit 49088-01		
5	Locknut (2)	7667
6	Locknut (2)	7686
7	Guard assembly, rear, right	49084-01
	Guard assembly, rear, left (not shown)	49081-01
8	Hex socket screw (4) (not included in kit)	3584
Items mentioned in text.		
A	Warning label	
B	Distance: 1 in (2.5 cm)	