



INSTRUCTIONS

J02527

2010-07-23



HIGH PERFORMANCE 1.4KW STARTER (BLACK)

GENERAL

Kit Number

31335-03A

Models

This kit fits 1994 and later Big Twin, Evolution and Twin Cam 88 engines.

⚠ WARNING

Rider and passenger safety depend upon the correct installation of this kit. Use the appropriate service manual procedures. If the procedure is not within your capabilities or you do not have the correct tools, have a Harley-Davidson dealer perform the installation. Improper installation of this kit could result in death or serious injury. (00333b)

NOTE

This instruction sheet references Service Manual information. A Service Manual for your model motorcycle is required for this installation and is available from a Harley-Davidson dealer.

Kit Contents

See Figure 2 and Table 1.

REMOVAL

Remove Existing Components

⚠ WARNING

To prevent accidental vehicle start-up, which could cause death or serious injury, disconnect negative (-) battery cable before proceeding. (00048a)

⚠ WARNING

Do not allow positive (+) battery cable to contact ground with negative (-) cable connected. Resulting sparks can cause a battery explosion, which could result in death or serious injury. (00069a)

1. Remove seat following the instructions in the appropriate Service Manual.
2. Disconnect battery cables, negative (-) cable first following the instructions in the appropriate Service Manual.
3. Remove existing starter following the instructions in the appropriate Service Manual.

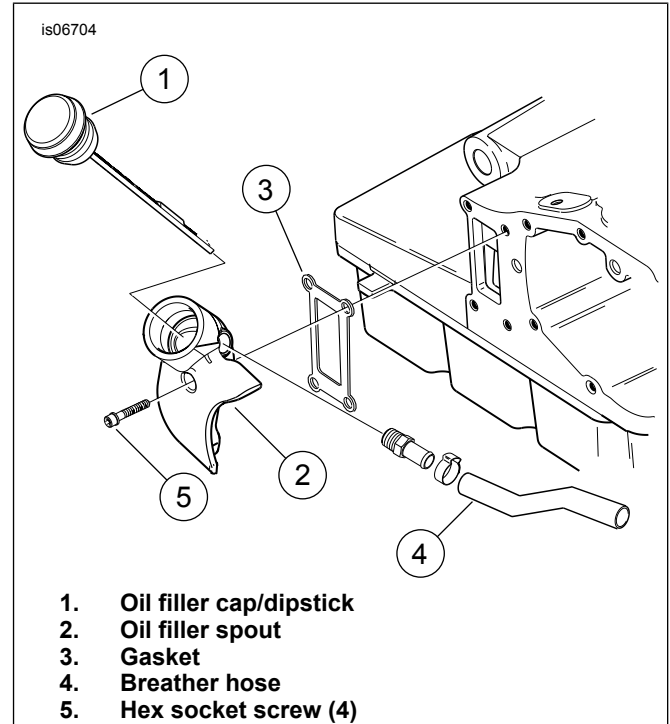


Figure 1. Remove Oil Filler Spout (FLT Only)

4. For all except FLT Models: Install the new starter according to the STARTER INSTALLATION instructions for the original equipment starter found in the Service Manual. For FLT Models: When installing this starter on FLT model motorcycles, remove the oil filler spout. See Figure 1. To remove the oil filler spout on FLT Models:
 - a. Place a drain pan under the engine oil pan.
 - b. Remove the oil filler cap/dipstick (1) and set aside.
 - c. Leave the breather hose to the oil filler spout (item 4, if so equipped). Remove the four hex socket screws (5) holding the spout to the transmission housing. Remove the oil filler spout. Wrap with a shop rag and set aside.
 - d. Carefully scrape all gasket material from the transmission housing, being sure not to cut into the gasket surface on the transmission housing.
 - e. Install the new starter according to the STARTER INSTALLATION instructions for the original equipment starter found in the Service Manual.
 - f. Place the new gasket (3) in position, and attach the oil filler spout. Tighten the screws to 7-9 ft-lbs (9.5-12.2 Nm).

- g. Install the oil filler cap/dipstick. Check the oil level.

▲ WARNING

Connect positive (+) battery cable first. If positive (+) cable should contact ground with negative (-) cable connected, the resulting sparks can cause a battery explosion, which could result in death or serious injury. (00068a)

- 5. Connect the battery cables, positive (+) cable first.

▲ WARNING

After installing seat, pull upward on seat to be sure it is locked in position. While riding, a loose seat can shift causing loss of control, which could result in death or serious injury. (00070b)

- 6. Install seat following the instructions in the appropriate Service Manual.

SERVICE PARTS

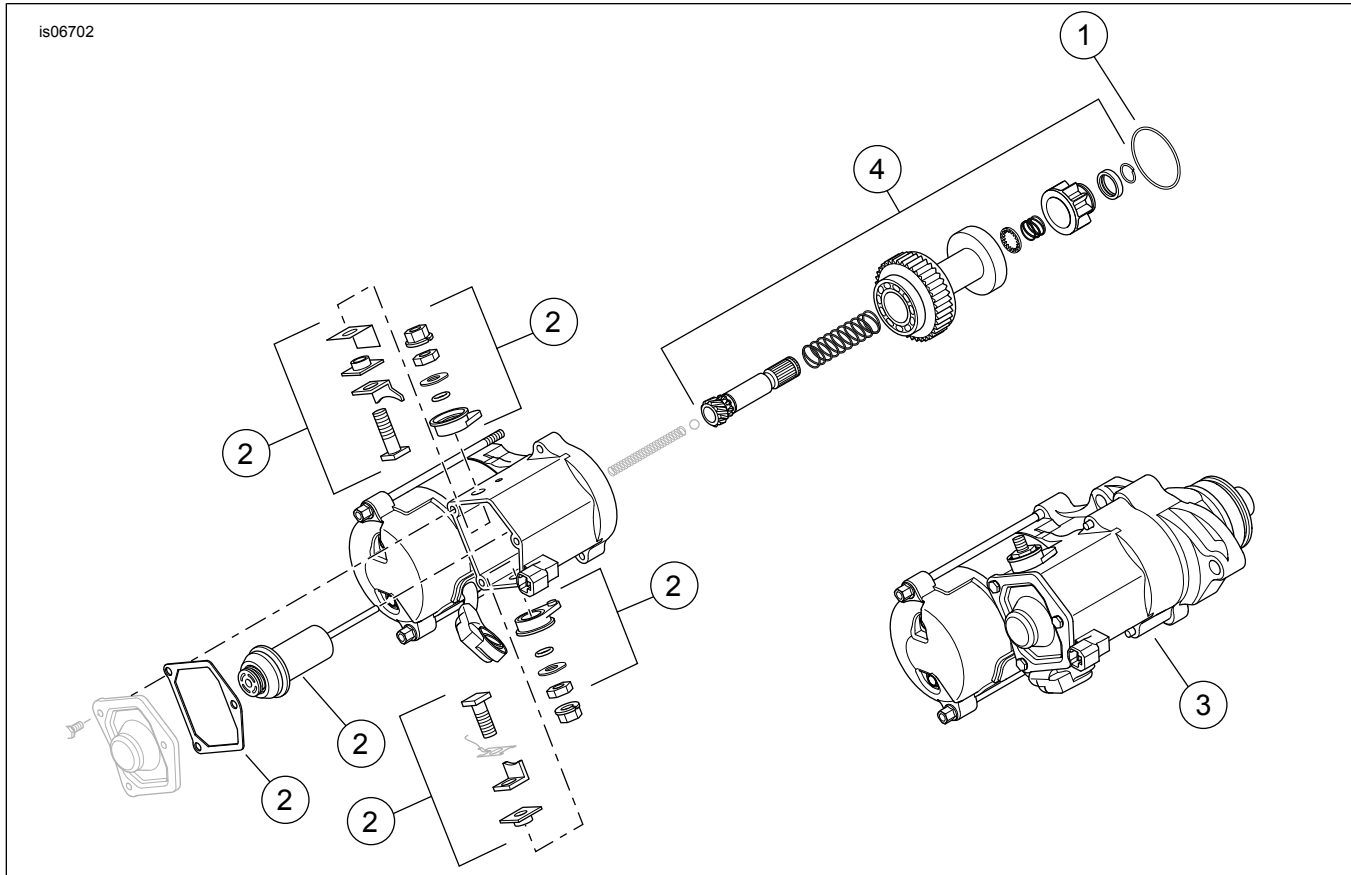


Figure 2. Service Parts

Table 1. Service Parts Table

Item	Description (Quantity)	Part Number
1	O-ring	10957
2	Solenoid Repair Kit	31604-06
3	Starter Assembly Complete	31619-06A
4	Clutch Subassembly	31633-07