



INSTRUCTIONS

J03764

2008-08-20



PREMIUM AIR HORN INSTALLATION KIT

GENERAL

Kit Number

69400-05A

Models

For model fitment information, see the P&A Retail Catalog or the Parts and Accessories section of www.harley-davidson.com (English only).

Additional Parts Required

A Premium Air Horn (69423-05) is needed for proper installation of this kit. This item is available from a Harley-Davidson Dealer.

⚠ WARNING

Rider and passenger safety depend upon the correct installation of this kit. Use the appropriate service manual procedures. If the procedure is not within your capabilities or you do not have the correct tools, have a Harley-Davidson dealer perform the installation. Improper installation of this kit could result in death or serious injury. (00333b)

NOTE

This instruction sheet references service manual information. A service manual for your model motorcycle is required for this installation and is available from a Harley-Davidson Dealer.

Electrical Overload

NOTICE

It is possible to overload the vehicle's charging system by adding too many electrical accessories. If the combined electrical accessories operating at any one time consume more electrical current than the vehicle's charging system can produce, the electrical consumption can discharge the battery and cause damage to the vehicle's electrical system. (00211d)

⚠ WARNING

When installing any electrical accessory, be certain not to exceed the maximum amperage rating of the fuse or circuit breaker protecting the affected circuit being modified. Exceeding the maximum amperage can lead to electrical failures, which could result in death or serious injury. (00310a)

The Premium Air Horn requires up to **18 Amps** additional current from the electrical system when sounding the horn.

Kit Contents

See Figure 4 and Table 1.

REMOVAL

⚠ WARNING

To prevent accidental vehicle start-up, which could cause death or serious injury, disconnect battery cables (negative (-) cable first) before proceeding. (00307a)

⚠ WARNING

Disconnect negative (-) battery cable first. If positive (+) cable should contact ground with negative (-) cable connected, the resulting sparks can cause a battery explosion, which could result in death or serious injury. (00049a)

1. Refer to the service manual and follow the instructions given to remove the seat and disconnect the battery cables, negative (-) cable first. Save all seat mounting hardware for installation.
2. See Figure 1. Remove the acorn nut (1) and flat washer (2) to free the horn assembly from the rubber mount (3) stud. Remove the rubber mount from the weld nut on the engine strap, and discard the mount.
3. Remove the elbow terminals (4) from the two spade contacts on the horn (9), and release the main harness conduit (5) from the J-clamp (6).

NOTE

*DO NOT cut the elbow terminal from the **black** wire.*

4. Cut the elbow terminal from ONLY the **yellow/ black** wire on the main harness conduit.
5. Remove the 10 mm flange nut (7) from the circular recess at the back of the horn bracket (8). Remove the horn from the chrome horn cover (10).

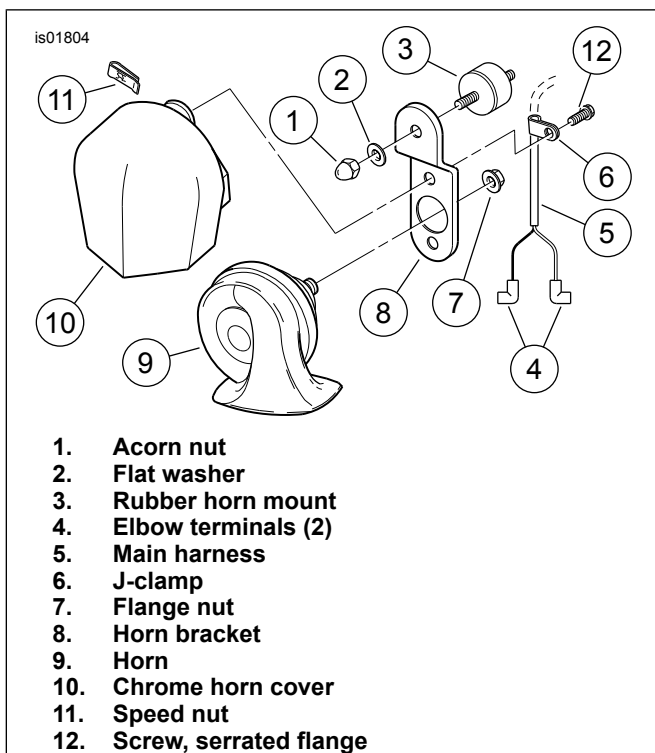


Figure 1. Original Equipment Horn Removal

INSTALLATION

New Horn Installation

1. See Figure 4. Assemble the horn mounting bracket (1) to the weld nut on the engine strap (C), with the bent tab toward the vehicle, using the screw (2) and washer (3). Do not fully tighten at this time.
2. Insert the **threaded** stud on the isolator (5), from the outside, into the large hole in the horn mounting bracket. Fit the three pins on the isolator into the small holes in the bracket, and fasten the isolator to the bracket with the lock nut (4). Tighten to 9–11.3 N·m (80–100 in-lbs).

NOTE

Rotate the bracket so the horn is aimed forward and down at a 45 degree angle for best sound dispersion.

3. Rotate the horn mounting bracket clockwise, to the orientation shown in Figure 4. Tighten the chrome hex screw to 9–11.3 N·m (80–100 in-lbs).
4. Obtain the Premium Air Horn (item A, purchased separately), the socket head screw (6) and small chrome flat washer (7) from **this** kit. Hook the mounting block (D) on the back of the horn over the T-stud (E) on the isolator. Align the hole on the top of the mounting block with the threaded hole in the T-stud.
5. Fasten the horn to the stud with the screw and washer. Tighten to 11–14 N·m (100–120 in-lbs).

New Horn Wiring - 1997 through 2007 Models

1. See Figure 2. Feed the long branch of the horn wiring harness (from the kit) into the space (1) in front of the vehicle battery and under the frame crossmember (2).
 - a. Bring the long harness branch out through the top opening in the crossmember, and forward along existing harnesses on the left side of the frame (3).
 - b. Bring the short branch with the ring terminal and **black** wire sleeve under the frame crossmember (2), and attach to the left side ground stud (4).
 - c. Bring the branch with the ring terminal and **red** wire sleeve over to the area of the battery positive (+) terminal and tuck the fuse holder into the available space in front of the battery.
 - d. See Figure 4. Position the relay (F) on the harness with the electrical connector at the bottom. Use a cable strap (10) to fasten the relay to the frame crossmember in front of the battery.

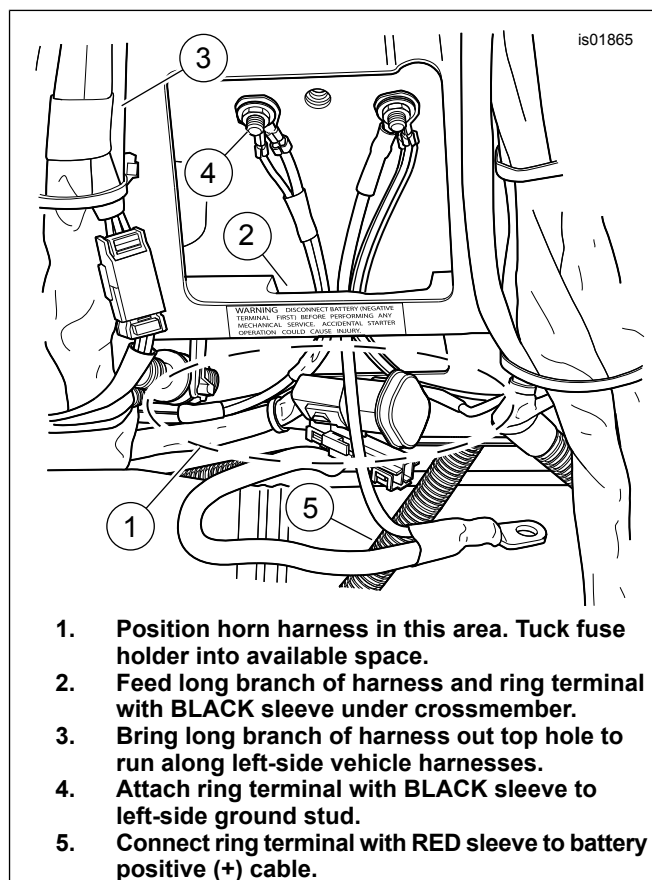


Figure 2. Horn Harness Routing, FL Touring Models (2005 Shown)

⚠ WARNING

When servicing the fuel system, do not smoke or allow open flame or sparks in the vicinity. Gasoline is extremely flammable and highly explosive, which could result in death or serious injury. (00330a)

2. Loosen the fuel tank. Refer to the appropriate section (Carbureted or EFI Engine) of the service manual.
3. Continue the long branch of the horn harness forward to a point directly above the **new** horn. Fasten the horn harness to the existing harnesses rearward of the horn with cable straps from the kit as needed.
4. Continue routing the horn harness branch down to the horn. Plug the elbow terminal on the **yellow** wire into one of the terminals on the underside of the horn.
5. Plug the elbow terminal on the **black** wire of the main harness conduit into the remaining horn terminal.
6. Refer to the service manual. Connect the **yellow/ black** wire on the main harness conduit to the sealed splice connector on the **yellow/ black** wire on the horn harness.
7. Push the air intake tube (B) connector into the opening near the bottom of the horn until the tab retainer clicks into place.

NOTE

Position the air intake tube so it will not get pinched by the seat or fuel tank after installation, contact hot engine or exhaust components, or interfere with the operation of the motorcycle.

Do not pinch the tube when tightening the cable straps.

8. Route the tube up to the area under the seat. Tie the tube to the motorcycle with cable straps as needed. Do not pinch the tube by over-tightening the straps. Cut off any excess tube or strap length.

⚠ WARNING

When servicing the fuel system, do not smoke or allow open flame or sparks in the vicinity. Gasoline is extremely flammable and highly explosive, which could result in death or serious injury. (00330a)

9. Tighten the fuel tank. Refer to FUEL TANK-INSTALLATION (AFTER PARTIAL REMOVAL) in the appropriate section (Carbureted or EFI Engine) of the service manual.

New Horn Wiring - 2008 Models

1. Remove the top electrical caddy following the instructions in the service manual.
2. See Figure 3. Route the horn wiring harness (from the kit) under the main harness and up the wiring trough (4).
 - a. Bring the branch with the ring terminal and **black** wire sleeve and attach to the front ground stud (1).
 - b. Bring the branch with the ring terminal and **red** wire sleeve over to the area of the battery positive (+) terminal (2), and tuck the fuse holder into the available space in front of the battery. Do not connect to the positive terminal at this time.

- c. Position the relay (3) on left side of battery. Use a short cable strap to attach the relay to the left side electrical caddy.

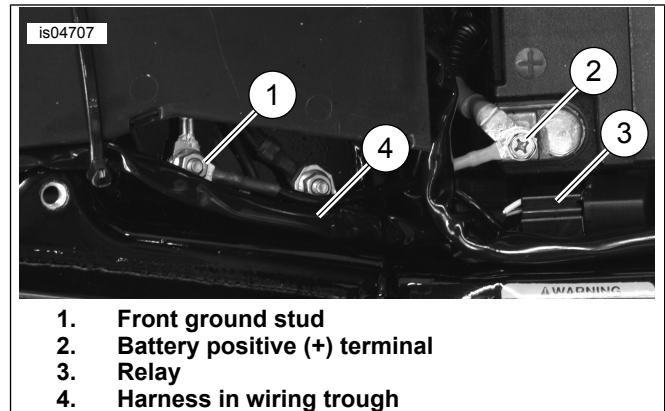


Figure 3. Horn Wiring Routing - 2008 Models

⚠ WARNING

When servicing the fuel system, do not smoke or allow open flame or sparks in the vicinity. Gasoline is extremely flammable and highly explosive, which could result in death or serious injury. (00330a)

3. Remove the fuel tank. Refer to FUEL TANK-REMOVAL in the appropriate section (Carbureted or EFI Engine) of the service manual.
4. Continue the long branch of the horn harness forward to a point directly above the **new** horn. Fasten the horn harness to the existing harnesses rearward of the horn with long cable straps from the kit as needed.
5. Continue the horn harness branch down to the horn. Plug the elbow terminal on the **yellow** wire into one of the terminals on the underside of the horn.
6. Plug the elbow terminal on the **black** wire of the main harness conduit into the remaining horn terminal.
7. Refer to the service manual. Connect the **yellow/ black** wire on the main harness conduit to the sealed splice connector on the **yellow/ black** wire on the horn harness.
8. Push the air intake tube (B) connector into the opening near the bottom of the horn until the tab retainer clicks into place.

NOTE

Position the air intake tube so it will not get pinched by the seat or fuel tank after installation, contact hot engine or exhaust components, or interfere with the operation of the motorcycle.

Do not pinch the tube when tightening cable straps.

9. Route the tube up to the area under the seat. Fasten the tube to the motorcycle with short cable straps as needed. Do not pinch the tube by over-tightening the straps. Cut off any excess tube or strap length.

⚠ WARNING

When servicing the fuel system, do not smoke or allow open flame or sparks in the vicinity. Gasoline is extremely flammable and highly explosive, which could result in death or serious injury. (00330a)

10. Install the fuel tank. Refer to FUEL TANK-INSTALLATION in the appropriate section (Carbureted or EFI Engine) of the service manual.

Final Assembly - All Models

NOTE

To prevent possible damage to the electrical system, verify that the ignition/light key switch is in the OFF position before connecting the battery cables.

1. Verify that the ignition/light key switch is in the OFF position.

⚠ WARNING

Connect positive (+) battery cable first. If positive (+) cable should contact ground with negative (-) cable connected, the resulting sparks can cause a battery explosion, which could result in death or serious injury. (00068a)

NOTICE

Do not over-tighten bolts on battery terminals. Use recommended torque values. Over-tightening battery terminal bolts could result in damage to battery terminals. (00216a)

2. Refer to the service manual and follow the instructions given to connect the positive (red) battery cable and install the horn harness ring terminal with the **red** wire sleeve to the positive (+) battery terminal.
3. Follow the instructions to connect the negative (-) battery cable to the negative (-) battery terminal.
4. If removed, install the top electrical caddy per the instructions in the service manual.
5. Refer to the service manual and follow the instructions to install the seat.

⚠ WARNING

After installing seat, pull upward on seat to be sure it is locked in position. While riding, a loose seat can shift causing loss of control, which could result in death or serious injury. (00070b)

6. Test the horn for proper operation.

SERVICE PARTS

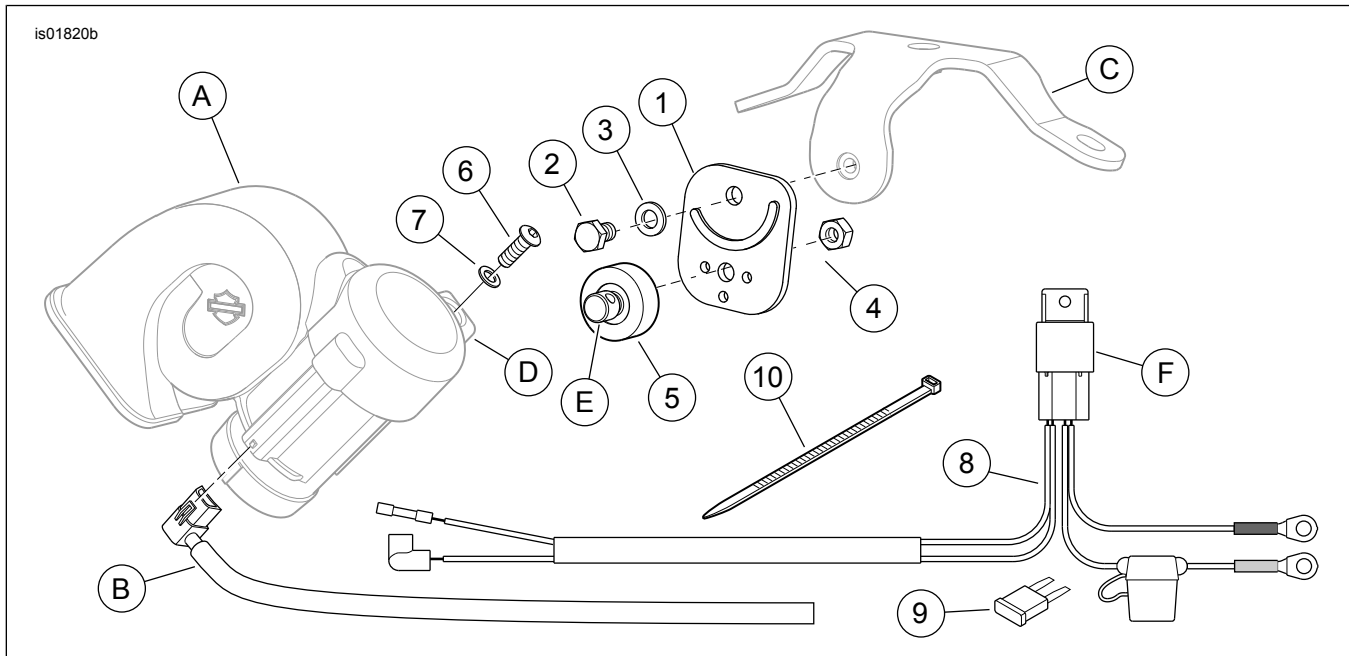


Figure 4. Service Parts: Horn Installation Kit

Table 1. Service Parts: Horn Installation Kit

Item	Description (Quantity)	Part Number
1	Bracket, horn mounting	69472-05A
2	Screw, mounting bracket (5/16-18)	94193-91T
3	Flat washer, mounting bracket	6781
4	Hex lock nut, with nylon insert (5/16-18)	7739
5	Isolator	69471-05
6	Screw, isolator (1/4-20)	3063

Table 1. Service Parts: Horn Installation Kit

Item	Description (Quantity)	Part Number
7	Flat washer, isolator	6220W
8	Wire harness, horn (includes item 9)	69416-05
9	• Fuse, blade type, 20 Amp	72315-05
10	Cable strap, short (10)	10006
11	Cable strap, long (4) (not shown)	10039
Items mentioned in text, but not included in kit:		
A	Horn (Part Number 69423-05, includes item B)	
B	• Tube, air intake (Part Number 69606-05)	
C	Engine strap	
Items mentioned in text:		
D	Mounting block on horn	
E	T-stud on isolator	
F	Relay on horn harness	