



# INSTRUCTIONS

J03159

2004-06-28



## SOFTAIL REAR AXLE-NUT COVER KIT (FLUTED)

### GENERAL

#### Kit Number

44575-04

#### Models

This kit fits all 2000 and later Softail model motorcycles, except FLSTS and models with accessory leather saddlebags or saddlebag support bracket part number 90238-00.

#### Kit Contents

See Figure 1 and Table 1.

### INSTALLATION

#### NOTE

Inside each axle-nut cover is a LH or RH inscription for the left-hand and right-hand side of the vehicle to which the covers fasten.

The **shorter** axle-nut cover mounts on the right-hand side of the vehicle, and the **longer** cover on the left.

On a bike that has been previously serviced, check to ensure that the axle has not been removed and re-installed from the left side (with the castle nut on the right side of the wheel).

If it has, the axle **MUST** be re-installed from the right side of the motorcycle. See **REAR WHEEL: REMOVAL and INSTALLATION** in the Service Manual for procedure. A Service Manual for your model motorcycle is available from any Harley-Davidson dealer.

1. See Figure 1. Partially fasten a set screw (3) into the threaded hole in each axle-nut cover (1, 2).
2. Position each axle-nut cover over the appropriate axle nut. The notch in each cover fits over the axle-adjusting screw.
3. Adjust the position of the exhaust system as necessary to provide axle-nut clearance.
4. Tighten the axle-nut-cover set screws (3) to 7–9 N·m (70 in-lbs).

#### NOTE

The set screws in this kit are treated with a thread-locking compound. When replacing or re-installing the set screws, apply Loctite® 243 (Blue) Threadlocker (Harley-Davidson Part Number 99642-97) to the set-screw threads.

### SERVICE PARTS

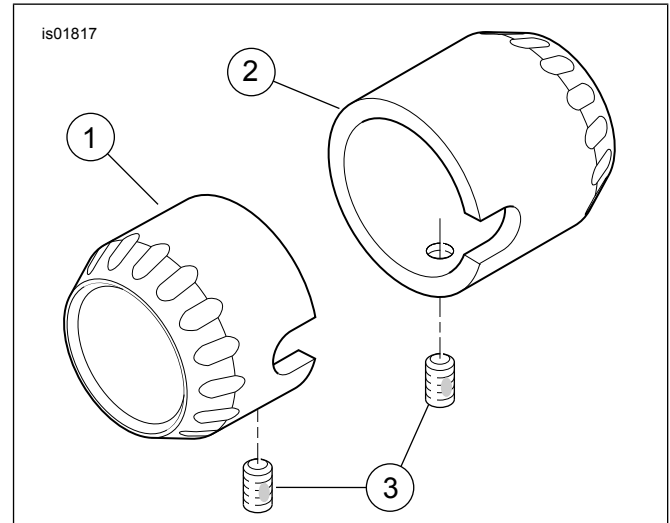


Figure 1. Service Parts: Softail Rear Axle-Nut Cover Kit (Fluted)

Table 1. Service Parts: Softail Rear Axle-Nut Cover Kit (Fluted)

Item	Description (Quantity)	Part Number
1	Axle nut cover (right)	Not Sold Separately
2	Axle nut cover (left)	Not Sold Separately
3	Set screw, with lock patch 1/4-20 x 0.25 inch long (2)	3349
4	Hex key, 1/8 inch	Not Sold Separately

