



INSTRUCTIONS

J01579

2008-07-17



CHROME SADDLEBAG SUPPORT KIT

GENERAL

Kit Number

90799-94D

Models

For model fitment information, see the P&A Retail Catalog or the Parts and Accessories section of www.harley-davidson.com (English only).

Additional Parts Required

Separate purchase of additional parts or accessories may be required for proper installation of this kit on your model motorcycle. Refer to the latest Harley-Davidson Genuine Motor Accessories and Genuine Motor Parts catalog for a list of required parts or accessories for your model.

Kit Contents

See Figure 4 and Table 1.

INSTALLATION, 1994 THROUGH 1999 MODELS

1. For models requiring additional purchase of a Directional Relocation Kit, complete the installation of **that** kit before installing this Chrome Saddlebag Support Kit.

NOTE

Secure the motorcycle in a straight upright position before installing the saddlebag supports.

Complete the saddlebag support installation on one side of the vehicle before beginning the other side.

2. See Figure 1. Remove and discard the upper shock absorber nut (1), outer washer (2) and shock absorber cover (3). Do not remove the original equipment (O. E.) inner washer (4) positioned behind the shock absorber cover and against the shock absorber.
3. See Figure 2. Remove the frontmost O. E. button head bolt and nut (at 3) from the fender support cover. Discard the bolt, but retain the nut for later installation.

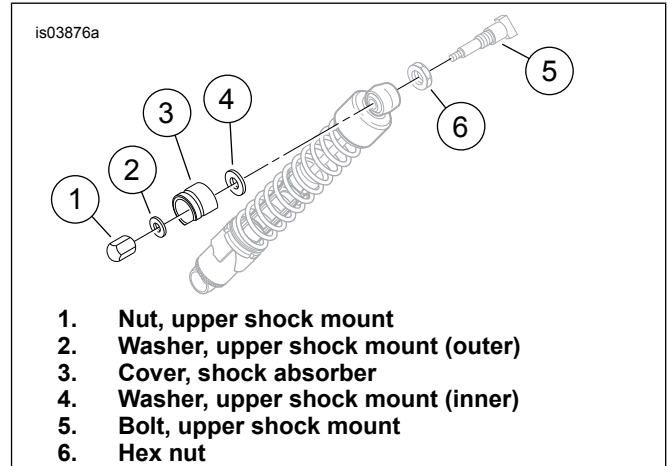


Figure 1. Rear Shock Absorber Upper Mount, 1994 Through 1999 Models

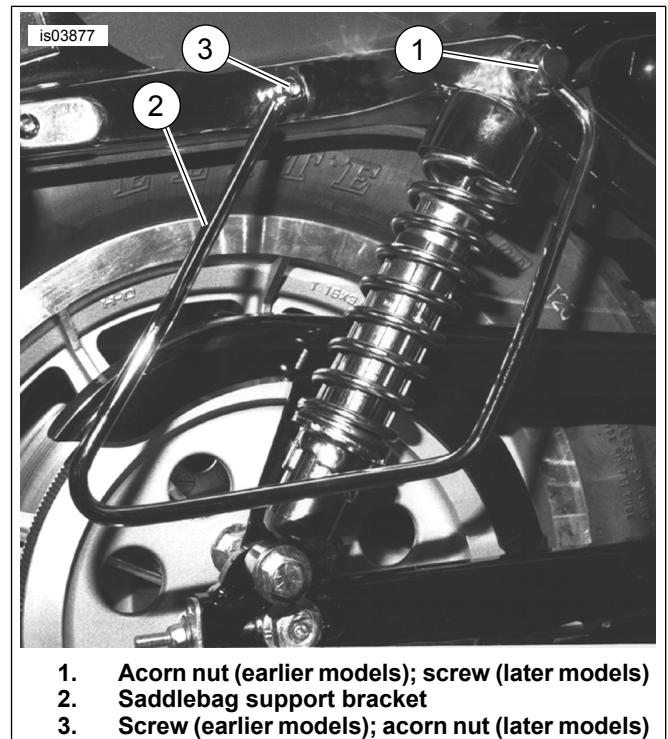


Figure 2. Soft Saddlebag Support Bracket Installation

4. See Figure 4. Install a new shock absorber cover (4) from the kit over the shock absorber stud. Position the support bracket (5) with the front mounting hole over the shock absorber stud and the rear mounting hole over the hole in the fender support.

NOTE

Be certain when performing the following step that the wire retention bracket is not dislodged from its position in the



fender while inserting the bolt through the fender support and fender. The bracket may be difficult to install or may be damaged if dislodged.

NOTE

When performing the following step:

- Models **with** sissy bar side plates, use the 2-3/8 in (60 mm) long bolt (1) from the kit, and the nut (C) removed in Step 3.
- Models **without** sissy bar side plates, use the 2-1/4 in (57 mm) long bolt (2) from the kit, and the nut (C) removed in Step 3.

5. Install the saddlebag support to the vehicle by inserting the correct bolt (1 or 2) through the rear support mounting hole, the rear fender support cover, fender support frame rail, rear fender and wire retention bracket. Fasten with the nut (C) removed in Step 3. Tighten to 10.8–17.6 N·m (96–156 in-lbs).
6. Secure the front of the saddlebag support bracket, and the upper shock absorber mount with the cover (4) in position, using the collar acorn nut (3) from the kit. Tighten the nut to 28.5–47.5 N·m (21–35 ft-lbs).
7. Repeat Steps 2 through 6 for the opposite side of the vehicle.

INSTALLATION, 2000 AND LATER MODELS

1. For models requiring additional purchase of a Directional Relocation Kit, complete the installation of that kit before installing this Chrome Saddlebag Support Kit.

NOTE

Secure the motorcycle in a straight upright position before installing the saddlebag supports.

Complete the saddlebag support installation on one side of the vehicle before beginning the other side.

2. See Figure 3. Remove the 1/2-13 bolt (1), washer (2) and shock absorber cover (3). Discard the bolt and cover, but retain the washer for later installation.

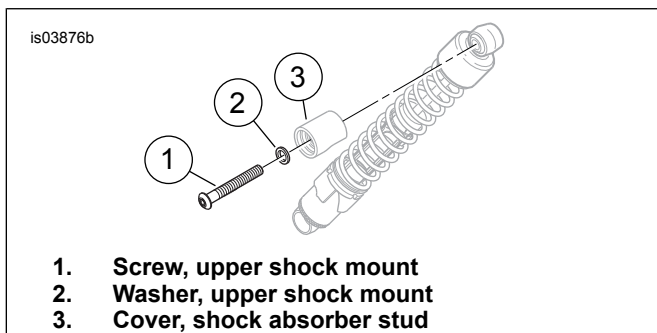


Figure 3. Rear Shock Absorber Upper Mount, 2000 and Later Models

3. See Figure 2. Remove the frontmost O. E. button head bolt and nut (at 3) from the fender support cover. **On 2000 through 2003 models**, discard the bolt, but retain the nut for later installation. **On 2004 and later models EXCEPT XL 1200N**, discard the bolt and nut. **On XL 1200N models**, discard the bolt, but retain the nut for later installation.

4. See Figure 4. Position the support bracket (5) with the front mounting hole over the shock absorber stud and the rear mounting hole over the hole in the fender support.

NOTE

Be certain when performing the following step that the wire retention bracket is not dislodged from its position in the fender while inserting the bolt through the fender support and fender. The bracket may be difficult to install or may be damaged if dislodged.

NOTE

When performing the following step:

- **2000 through 2003 models with** sissy bar side plates, use the 2-3/8 in (60 mm) long bolt (1) from the kit, and the nut (C) removed in Step 3.
- **2000 through 2003 models without** sissy bar side plates, use the 2-1/4 in (57 mm) long bolt (2) from the kit, and the nut (C) removed in Step 3.
- **2004 and later models except XL 1200N**, use the 2-3/4 in (70 mm) long screw (8), spacer (10) and locking acorn nut (9) from the kit.
- **XL 1200N models**, use the 2-3/4 in (70 mm) long screw (8) from the kit, and the nut (C) removed in Step 3.

5. **On 2000 through 2003 models**, install the saddlebag support to the vehicle by inserting the correct bolt (1 or 2) through the rear support mounting hole, the rear fender support cover, fender support frame rail, rear fender and wire retention bracket. Fasten with the nut removed in Step 3. Tighten to 10.8–17.6 N·m (96–156 in-lbs). **On 2004 and later models EXCEPT XL 1200N**, install the saddlebag support to the vehicle by inserting the bolt (8) through the wire retention bracket, rear fender, fender support frame rail, rear fender support cover and rear saddlebag support mounting hole. Place the spacer washer (10) onto the screw threads. Install the locking acorn nut (9) and tighten to 10.8–17.6 N·m (96–156 in-lbs). **On XL 1200N models**, install the saddlebag support to the vehicle by inserting the bolt (8) through the rear support mounting hole, the rear fender support cover, fender support frame rail, rear fender and wire retention bracket. Fasten with the nut removed in Step 3. Tighten to 10.8–17.6 N·m (96–156 in-lbs).
6. Secure the front of the saddlebag support bracket, and the upper shock absorber mount, using the 1/2-13 hex head screw (7) from the kit. Tighten the screw to 28.5–47.5 N·m (21–35 ft-lbs).
7. Repeat Steps 2 through 6 for the opposite side of the vehicle.

SERVICE PARTS

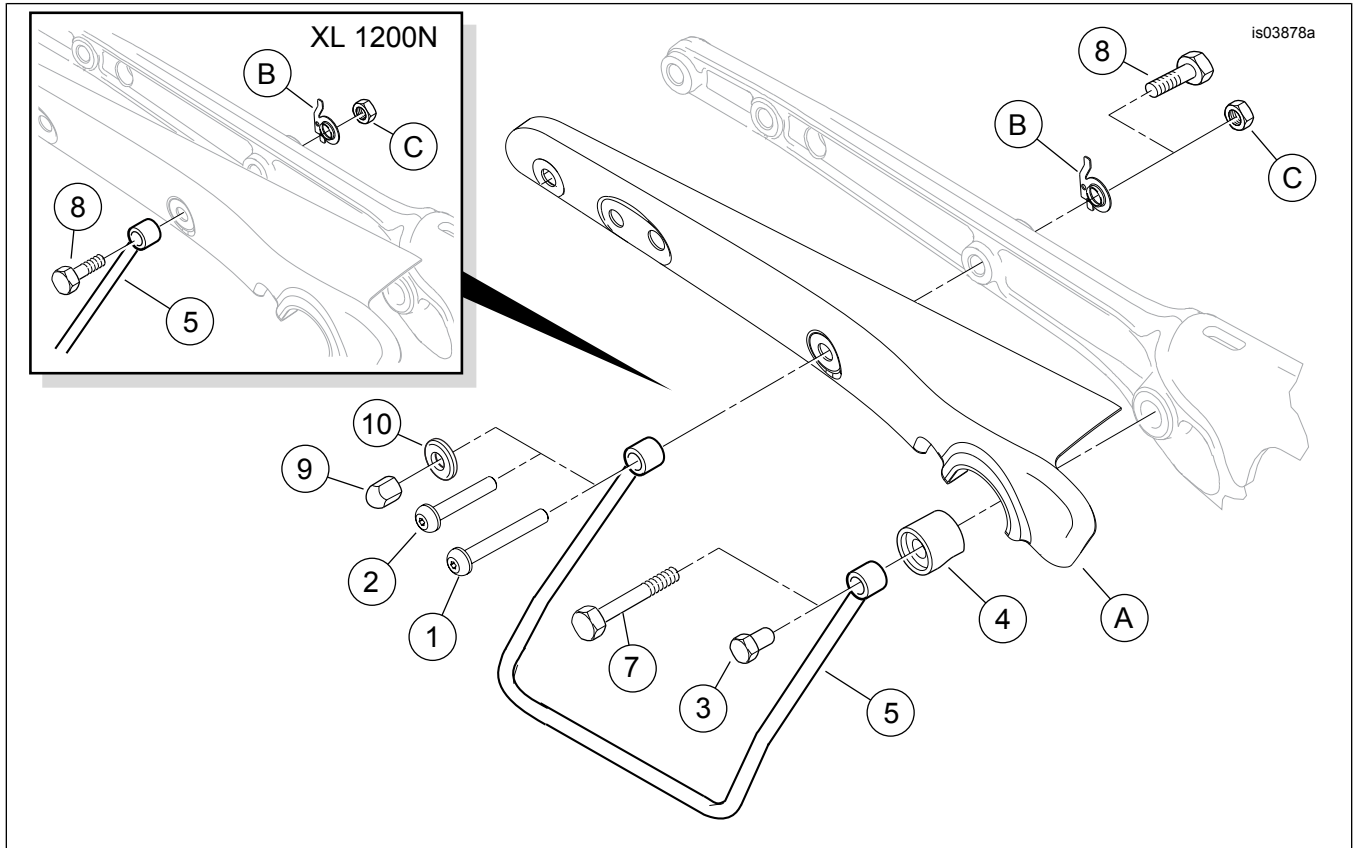


Figure 4. Service Parts, Saddlebag Support Kit

Table 1. Service Parts Table

Item	Description (Quantity)	Part Number
1	Screw, pan head, TORX 5/16-18 x 2-3/8 in (2)	4185
2	Screw, pan head, TORX 5/16-18 x 2-1/4 in (2)	4191
3	Acorn nut, long barrel (2) (for 1994 through 1999 models)	7670
4	Cover, shock absorber stud (2) (for 1994 through 1999 models)	54711-94
5	Saddlebag support (right side)	90847-94A
6	Saddlebag support (left side, not shown)	90850-94A
7	Cap screw, hex head, 1/2-13 x 3 in (2)	3871
8	Screw, hex head, 5/16-18 x 2-3/4 in (2) (for 2004 and later models)	858A
9	Acorn nut, locking (2) (for 2004 and later models, except XL 1200N)	7549A
10	Spacer, 1/8 in thick (for 2004 and later models, except XL 1200N)	6109
Items mentioned in text, but not included in kit:		
A	Rear fender support cover	
B	Wire retention bracket	
C	Fender retaining hex nut	