



INSTRUCTIONS

J03494

2008-05-23



DYNA PASSENGER FOOTPEG MOUNTS

GENERAL

Kit Number

49249-06, 49088-09

Models

For model fitment information, see the P&A Retail Catalog or the Parts and Accessories section of www.harley-davidson.com (English only).

These kits fit certain model vehicles with original equipment solo seats and no footpegs. It is also a direct replacement for original equipment passenger footpeg mounting brackets on models with stock two-up seats and passenger footpegs.

Additional Parts Required

Proper installation of this kit may require the separate purchase of a passenger footpeg and associated hardware. See a Harley-Davidson dealer.

⚠ WARNING

Rider and passenger safety depend upon the correct installation of this kit. Use the appropriate service manual procedures. If the procedure is not within your capabilities or you do not have the correct tools, have a Harley-Davidson dealer perform the installation. Improper installation of this kit could result in death or serious injury. (00333b)

NOTE

This instruction sheet references service manual information. A service manual for your model motorcycle is required for this installation and is available from a Harley-Davidson Dealer.

Special tools are required for the installation of this kit. We recommend that this kit be installed by a factory-trained technician at a Harley-Davidson dealer.

Kit Contents

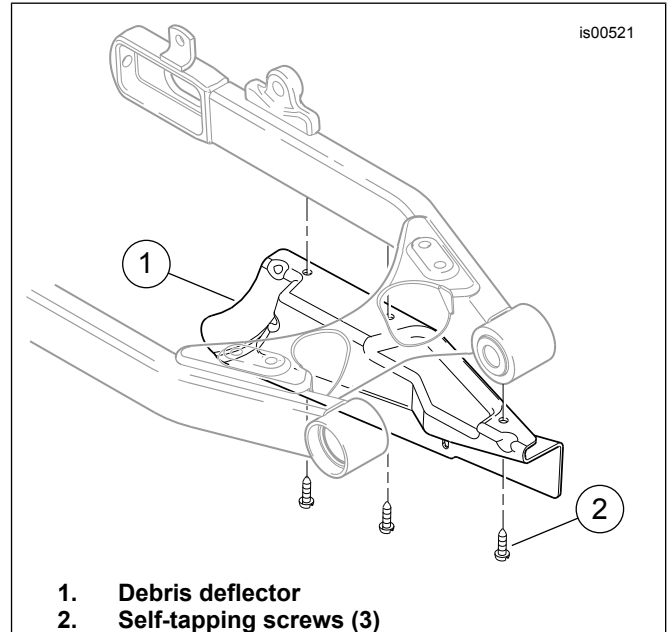
See Figure 5 and Table 1.

REMOVAL

NOTE

Save all hardware for installation unless otherwise noted.

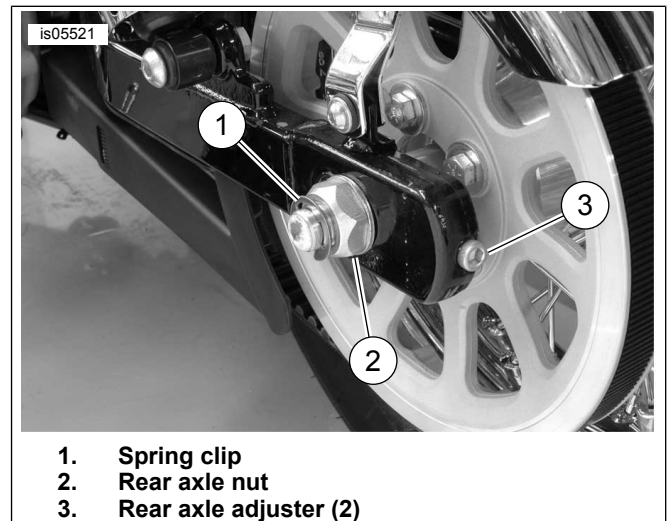
1. Remove the passenger footpegs, if equipped.
2. Block the motorcycle under the frame so the rear wheel is off the ground.
3. See Figure 1. Remove the three self-tapping screws (2) and remove the debris deflector (1) from the left side of the vehicle.



1. Debris deflector
2. Self-tapping screws (3)

Figure 1. Debris Deflector Removal

4. See Figure 2. Remove the spring clip (1) from the left side of the rear axle. Loosen, but do not remove, the rear axle nut (2).
5. Turn the axle adjusters (3) on each side of the rear wheel counterclockwise about the same amount to move the rear wheel forward and allow slack in the drive belt.



1. Spring clip
2. Rear axle nut
3. Rear axle adjuster (2)

Figure 2. Rear Axle Nut and Adjusters (2008 shown)

NOTE

When removing the belt guard, make sure the belt guard does not contact the fender to avoid scratching the paint.



- See Figure 3. Remove the front (1) and rear (2, 3) upper belt guard fasteners and carefully remove the upper belt guard from the vehicle.

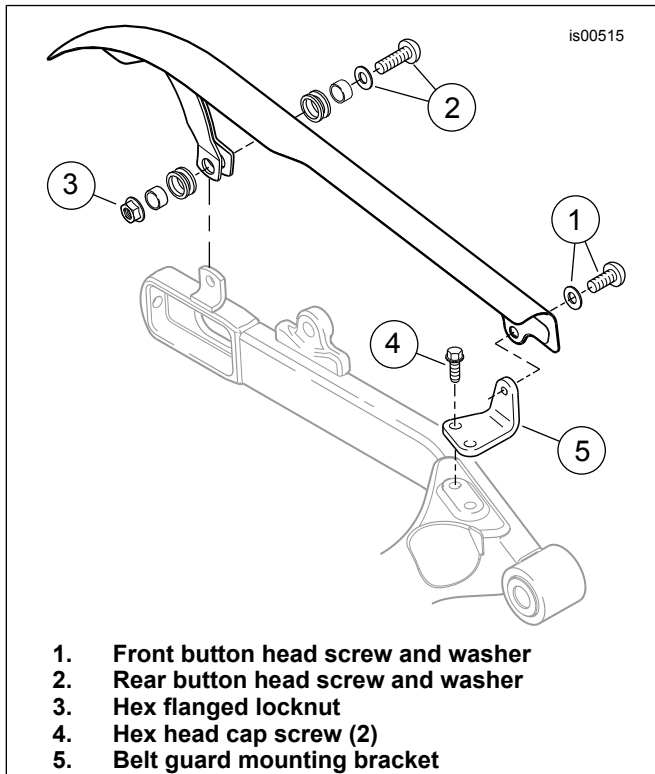


Figure 3. Upper Belt Guard Removal

- Remove the two hex head cap screws (4) that attach the belt guard mounting bracket (5) to the rear fork. Discard the bracket and screws.
- See Figure 5. Remove and discard the two plastic hole plugs (B) from the rear fork (A), if installed.

INSTALLATION

- See Figure 5. Install the left side footpeg support (2) to the mounting location as shown, and tighten the screws (3) to 34–47 N·m (25–35 ft-lbs).
- Install the upper belt guard with the fasteners removed earlier. Tighten the screws to 34–47 N·m (25–35 ft-lbs).
- Install the debris deflector with the three screws removed earlier. Tighten the screws to 4.5–6.8 N·m (40–60 in-lbs).

- Install the right side footpeg support (1) with screws (3). Tighten the screws to 25–35 ft-lbs (34–47 Nm).

Footpegs

▲ WARNING

Footrests must fold up and toward rear of motorcycle if struck. Failure to set footrests to fold up and back could result in death or serious injury. (00366a)

- For Models Not Equipped with Stock Footpegs:** Install footpegs per the instructions included with the kit.

NOTE

See Figure 4. Install the spring washer (1) between the jaws of the footpeg support bracket along with the mounting end of the footpeg.

Footpegs must be installed in the bracket with the rounded side (2) of the mounting end inboard. When footpegs are properly installed, footpegs will fold upward (3) at a 45 degree angle toward the rear of the motorcycle.

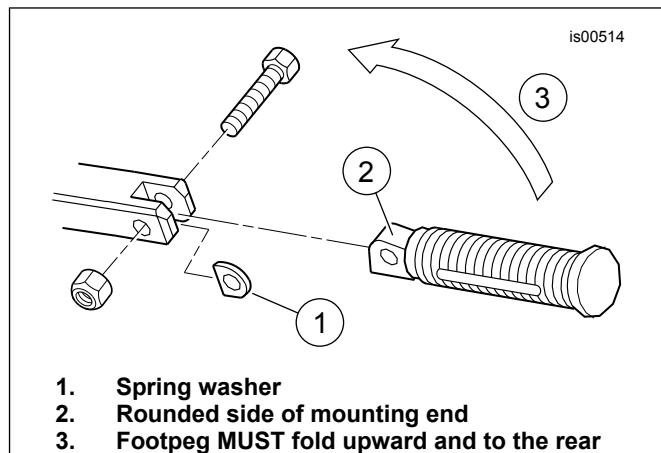


Figure 4. Correct Footpeg Installation

- For Models Equipped with Stock Footpegs:** See Figure 5. Install the passenger footpegs (D) on each footpeg support as shown, using a hex head cap screw (E), spring washer (F) and locknut (G). Tighten the nut to 9.5–12.2 N·m (84–108 in-lbs). Repeat for the other side.

BELT ADJUSTMENT AND VEHICLE ALIGNMENT

- Inspect and adjust rear belt deflection per the instructions in the service manual.
- Align the vehicle per the instructions in the service manual.

SERVICE PARTS

is05520

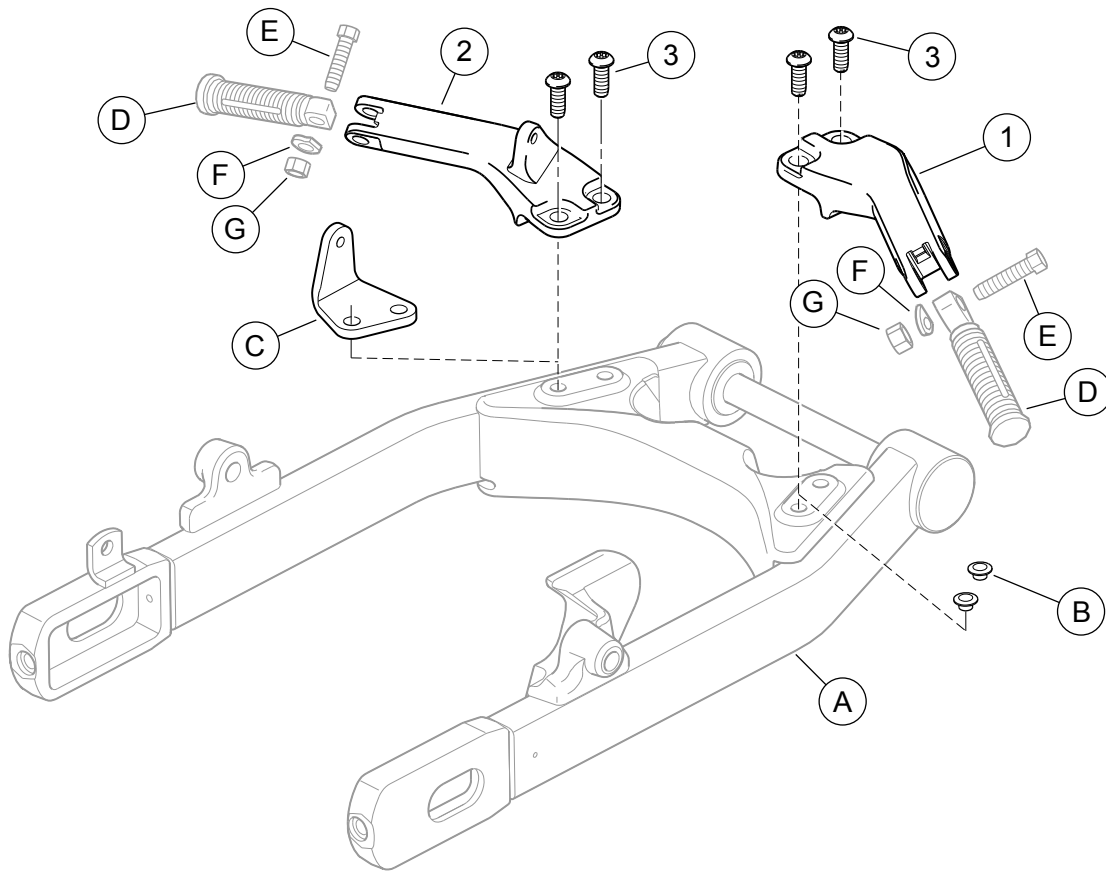


Figure 5. Service Parts: Passenger Footpeg Mounting Kit

Table 1. Service Parts Table

| Item | Description (Quantity) | Part Number |
|--|---|-----------------|
| Kit 49249-06 | | |
| 1 | Support, passenger footpeg, chrome (right side) | 49250-06A |
| 2 | Support, passenger footpeg, chrome (left side) | 49251-06 |
| 3 | Screw, button head, (4) | Sold Separately |
| Kit 49088-09 | | |
| 1 | Support, passenger footpeg, black (right side) | 49224-06A |
| 2 | Support, passenger footpeg, black (left side) | 49230-06 |
| 3 | Screw, button head, self-tapping, 3/8-16 x 1 inch (4) | 4059 |
| Items mentioned in text, but not included in kit: | | |
| A | Rear fork | |
| B | Hole plug (2) | |
| C | Belt guard mounting bracket | |
| D | Passenger footpeg (2) | |
| E | Cap screw (2) | |
| F | Spring washer (2) | |
| G | Hex locknut (2) | |