



# INSTRUCTIONS

J00929

2006-09-19



## DYNA RIGID MOUNT LEATHER SADDLEBAGS

### GENERAL

#### Kit Number

90300-98A, 90307-98, and 90680-97

#### Models

For model fitment information, please see the P&A Retail Catalog or the Parts and Accessories section of [www.harley-davidson.com](http://www.harley-davidson.com) (English only).

This kit does not fit with FXDWG detachable sideplates.

#### Additional Parts Required

Proper installation of this kit requires the separate purchase of the following parts, which are available at a Harley-Davidson dealer.

- Heat Gun (HD-25070)
- Heat Shield Attachment (HD-41183)
- Packard Crimping Tool (HD-38125-8)
- Ultra-Torch (HD-39969)

#### ⚠ WARNING

**Rider and passenger safety depend upon the correct installation of this kit. Use the appropriate service manual procedures. If the procedure is not within your capabilities or you do not have the correct tools, have a Harley-Davidson dealer perform the installation. Improper installation of this kit could result in death or serious injury. (00333b)**

#### NOTE

*This instruction sheet references Service Manual information. A Service Manual for your model motorcycle is required for this installation and is available from a Harley-Davidson dealer.*

#### Kit Contents

See Figure 4 and Table 1.

### INSTALLATION

#### NOTE

*Perform the following tasks on one side of the motorcycle before proceeding to the opposite side. To keep fender in alignment, the front mounting point will be mounted first.*

#### Install Front Mounting Point

1. See Figure 4. Remove bolt from location "A" on the fender support (A). This will be the location for the front mounting point. On FXD and FXDL models, the rear mounting point will mount at the rear hole on the fender support bracket along with the turn signal as shown. FXDWG will mount in the second to the last hole as shown.

#### NOTE

*Make sure you use the coarse (3/8-16) threaded nut in the next step. Attempting to install the fine (3/8-24) threaded nut on bolt (1) will damage threads on both nut and bolt.*

2. **Models with rigid sideplates:** Insert the 3-1/4 in. bolt (1) through the washer (3), saddlebag and spacer (2) into the fender. Then install the washer (8) and locknut (11) on the inside of the fender. Tighten bolt until snug.

#### NOTE

*If this kit is used with detachable sideplates, replace the spacers provided in this kit ( Figure 4, Item 2) with detachable mounting points.*

3. **Models without rigid sideplates:** Insert the 3 in. bolt (13) through the washer (3), saddlebag and spacer (2) into the fender. Then install the washer (8) and locknut (14) on the inside of the fender. Tighten bolt until snug.

#### Install Turn Signal Stalks and Rear Saddlebag Support

1. Remove seat according to the instructions in the Service Manual.

#### ⚠ WARNING

**To prevent accidental vehicle start-up, which could cause death or serious injury, disconnect battery cables (negative (-) cable first) before proceeding. (00307a)**

#### ⚠ WARNING

**Disconnect negative (-) battery cable first. If positive (+) cable should contact ground with negative (-) cable connected, the resulting sparks can cause a battery explosion, which could result in death or serious injury. (00049a)**

2. Disconnect battery cables, negative (-) cable first.
3. See Figure 1. Remove lens (1) from rear turn signal housing (2). Remove bulb (3) from directional housing socket.



### NOTE

For FXD and FXDL models, rear mounting point will mount at the rear hole on fender support bracket. FXDWG will mount in the second to last hole.

- For 1996-1998 models:** Trace turn signal wires routing along underside of rear fender. Remove cable strap located on top side of rear fender near the rubber grommet. Bend internal fender clips outward. **Do not remove wires from the clips.** Gently pull all excess wire rearward along underside of fender and into turn signal housing to allow for additional length of wire within turn signal housing. Bend fender clips back into place. **For 1999-2001 models:** Trace turn signal wires routing along underside of rear fender to the tail light. Remove wires from the connector. Bend internal fender clips outward. Do not remove wires from the clips. Gently pull all excess wire rearward along underside of fender and into tail light to allow for additional length of wire within tail light. Bend fender clips back into place.
- For 1996-1998 models:** Cut wires within turn signal housing about 3 in. away from point where wires connect to the bottom of the bulb socket. From underside of fender, withdraw end of wires that are within turn signal housing support ( Figure 1, Item 4) into the inner fender area. **For 1999-2001 models:** From underside of fender, withdraw end of wires that are at the tail light into the inner fender area.

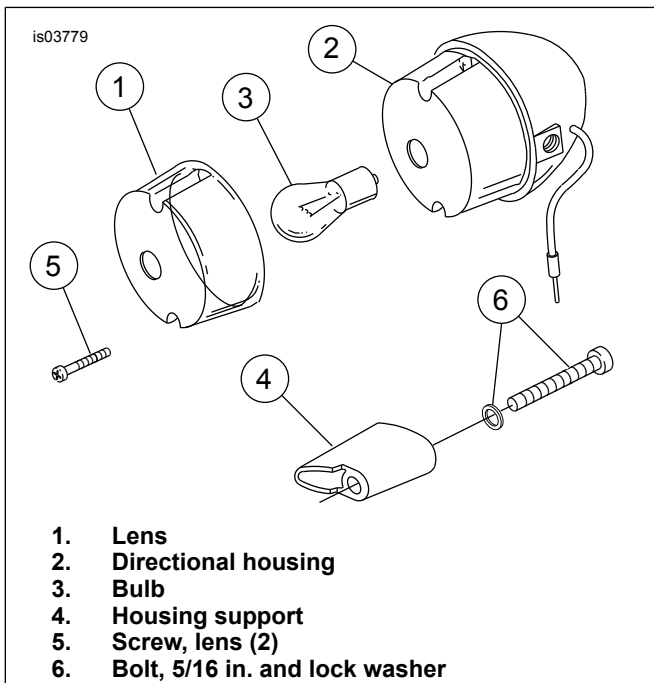


Figure 1. Remove Stock Stalk

- See Figure 1. Remove and discard 5/16 in. bolt and lockwasher (6) securing rear turn signal to fender. Bolt and washer are located on inside of fender.
- See Figure 4. Install lockwasher (12) and rear turn signal housing (B) onto short threaded end (5/16-24 x 3/8 in.) of turn signal stalk (5) from kit. Tighten securely. Take care to avoid scratching or marring component chrome finish.

- Insert the wires through locknut (10), washer (8) and through the rear hole of the fender support.
- Remove and discard the vinyl conduit on the turn signal wires back to the fender support. Be careful not to cut the turn signal wires.
- Install chrome hole plug (6) in fender support hole previously used for turn signal wire. Install rubber plug (7) in hole of turn signal housing previously used for turn signal wire(s).

### NOTE

If this kit is used with detachable side plates replace the spacers provided in this kit ( Figure 4, Item 2) with detachable mounting points.

- Place the saddlebag support (C) and spacer (2) on the long threaded end of turn signal stalk (5). Insert the turn signal wires through the long threaded portion of the turn signal stalk. If the wires bind inside the turn signal stalk, apply a drop of liquid dish soap on the end of the wires and insert again. Wipe off excess dish soap from the turn signal wires. Insert rear turn signal stalk through rear mounting hole in rear fender support, and rear fender.
- Install flat washer (8) and locknut (10) onto turn signal stalk on inside of rear fender. Tighten finger tight.
- Align rear turn signal housing so that its lens, when installed, will be aimed rearward for proper visibility. While holding turn signal housing in position, tighten locknut to 22 ft-lbs (30 Nm). Also tighten front mounting bolt to 27 ft-lbs (37 Nm).

## Reconnect Turn Signal Wires

- See Figure 4. Strip a 3/8 in. section of insulation from both ends of each turn signal wire now inside the turn signal housing (B).

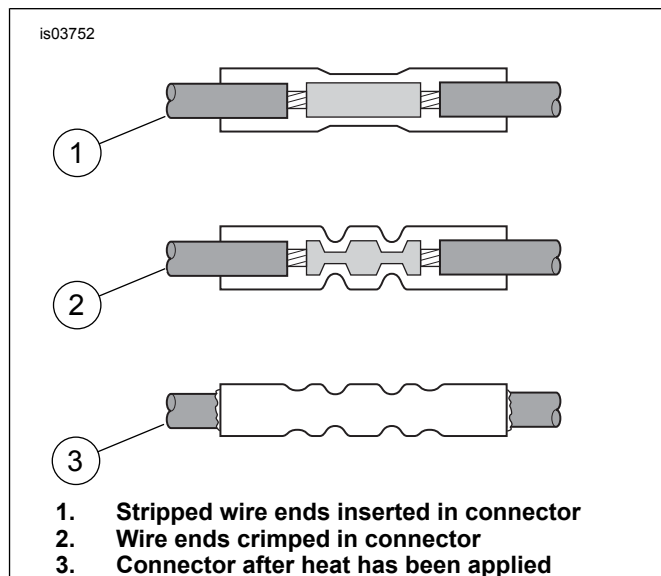


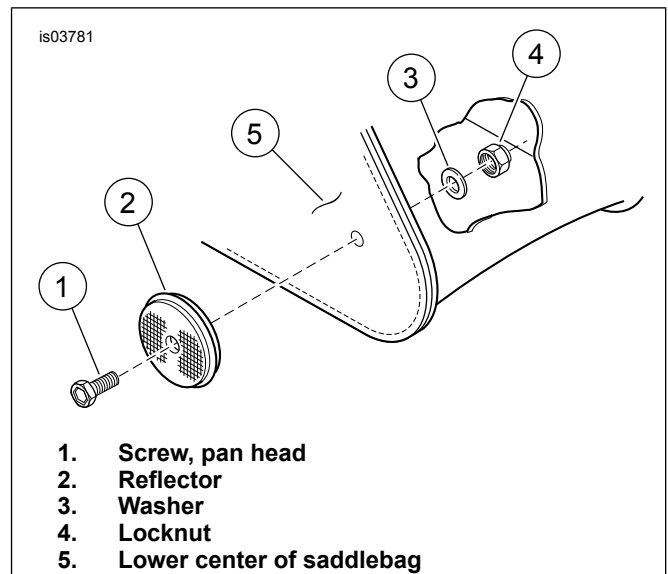
Figure 2. Sealed Butt Splice Connectors

2. See Figure 2. Insert turn signal wires prepared in Step 1 into opposite ends of a butt splice connector. Connect black to black and violet/brown to violet/brown.
3. Match the color of the butt splice connector with the color of the crimp cavity of the crimping tool. Using a Packard Crimping Tool, crimp wires into the connector.

**▲ WARNING**

**Be sure to follow manufacturer's instructions when using the UltraTorch UT-100 or any other radiant heating device. Failure to follow manufacturer's instructions can cause a fire, which could result in death or serious injury. (00335a)**

- Always keep hands away from tool tip area and heat shrink attachment.
  - Avoid directing the heat toward any fuel system component. Extreme heat can cause fuel ignition/explosion.
  - Avoid directing heat toward any electrical system component other than the connectors on which heat shrink work is being performed.
  - Be sure to turn the "ON/OFF" switch to the "OFF" position after use.
4. See Figure 2. Using the Ultra-Torch, Heat Gun with Heat Shield Attachment, or other suitable radiant heating device, heat the crimped splice to encapsulate the butt splice connection. Apply heat from the center of the crimp out to each end until the meltable sealant exudes out of both ends of the connector.
  5. Reinstall bulb into turn signal housing socket. Reinstall lens to turn signal housing.
  6. Center the reflector on lower center of bag and mark hole location.
  7. See Figure 3. Punch hole in saddlebag and mount reflector with pan head screw, washer and locknut as shown.



**Figure 3. Install Reflector**

8. Repeat steps to install saddlebag on opposite side of motorcycle.

## Final Assembly

**▲ WARNING**

**Connect positive (+) battery cable first. If positive (+) cable should contact ground with negative (-) cable connected, the resulting sparks can cause a battery explosion, which could result in death or serious injury. (00068a)**

1. Reconnect battery, positive (+) cable first.
2. Check turn signals for proper operation.

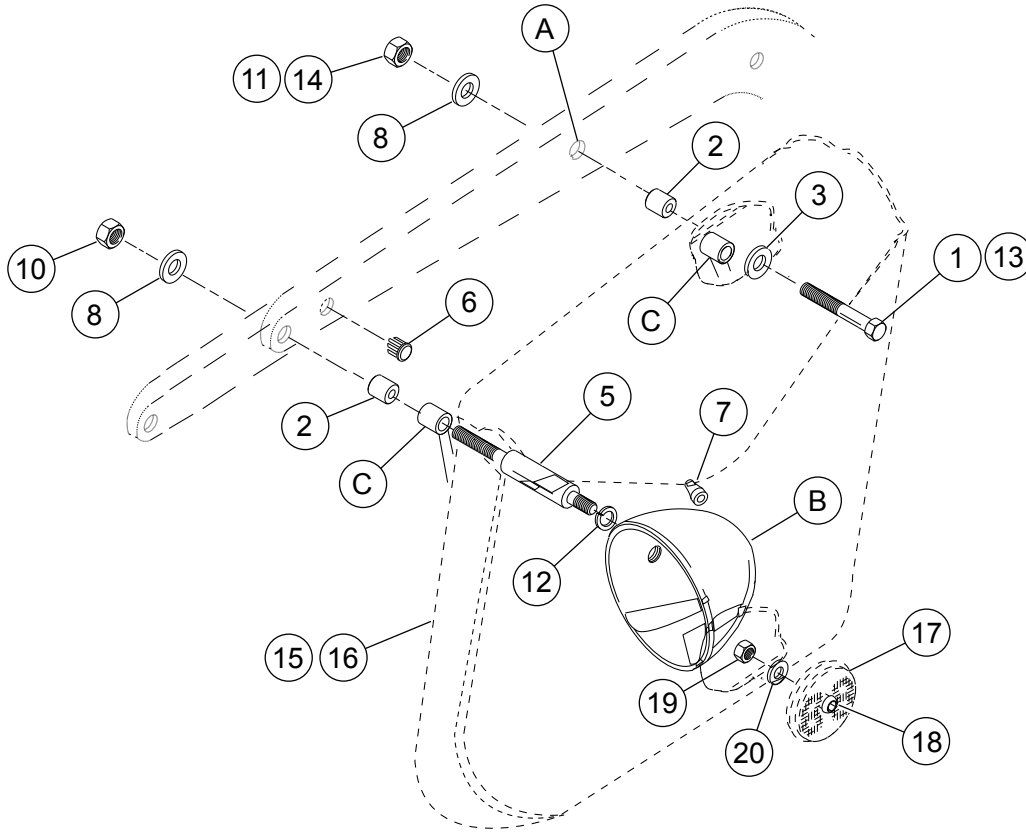
**▲ WARNING**

**After installing seat, pull upward on seat to be sure it is locked in position. While riding, a loose seat can shift causing loss of control, which could result in death or serious injury. (00070b)**

3. Install seat according to the instructions in the Service Manual.

# SERVICE PARTS

is03784



**Figure 4. Service Parts: Dyna Rigid Mount Leather Saddlebags**

**Table 1. Service Parts: Dyna Rigid Mount Leather Saddlebags**

Item	Description (Quantity)	Part Number	Item	Description (Quantity)	Part Number
Items 1 and 11 are used on models with rigid sideplates.			15	Saddlebag, left (Kit 90680-97)	90773-97
1	Bolt, hex head 3/8-16 x 3-1/4 in. (2)	3528		Saddlebag, left (Kit 90307-98)	90308-98
2	Spacer (4)	40950-98A		Saddlebag, left (Kit 90300-98)	90301-98A
3	Washer (2)	6400HB	16	Saddlebag, right (Kit 90680-97)	90760-97
4	Leather dressing (Not Shown)	Not Sold Separately		Saddlebag, right (Kit 90307-98)	90309-98
5	Stalk, turn signal (2)	68490-97		Saddlebag, right (Kit 90300-98)	90302-98A
6	Hole plug, chrome (2)	56239-93	17	Reflector, red (2)	59264-86
7	Hole plug, rubber (2)	58758-93	18	Screw, pan head (2)	2587
8	Washer, 3/8 x 13/16 x 1/16 (4)	6701	19	Nut (2)	7626W
9	Connector, butt splice (4) (Not Shown)	70585-93	20	Washer (2)	6716
10	Locknut, 3/8-24 (2)	7775	21	Chrome buckle, with male clip (Not Shown, Kit 90300-98A)	88304-07
11	Locknut, 3/8-16 (2)	7778		Chrome buckle, with female clip (Not Shown, Kit 90307-98)	90474-07
12	Lockwasher (2)	94081-90T	<b>Items mentioned in text, but not included in kit.</b>		
Items 13 and 14 are used on models without rigid sideplates.			A	Location "A" on fender support	
13	Bolt, hex 3/8-16 x 3 in. (2)	3526	B	Turn signal housing	
14	Nut, Nylock 3/8-16 thin (2)	7667	C	Saddlebag support (2)	