



INSTRUCTIONS

J03771

2006-05-18



DYNA DETACHABLE SADDLEBAG KIT

GENERAL

Kit Number

90460-06B

Models

This kit fits 2006 and later Dyna models (except FXDWG).

This kit **does not fit** motorcycles with Rear Axle Covers or most Layback License Plate kits. This kit does fit with Layback License Plate and Turn Signal Relocation Kit 60215-06.

Additional Parts Required

All models require separate purchase of Turn Signal Relocation Kit 68732-02A (Domestic) or 68733-02A (International), or Layback License Plate and Turn Signal Relocation Kit 60215-06.

Installation of this kit will require Loctite® 243 (blue), Part Number 99642-97, which is available from any Harley-Davidson dealership.

Kit Contents

Fender Mount Kit (91822-06, packaged separately). See Figure 5 and Table 1.

⚠ WARNING

Do not exceed saddlebag weight capacity. Put equal weight in each bag. Too much weight in saddlebags can cause loss of control, which could result in death or serious injury. (00383a)

NOTE

Maximum saddlebag weight capacity is 7 pounds (3.2 Kg.)

⚠ WARNING

Federal Motor Vehicle Safety Standard (FMVSS) 108 requires motorcycles to be equipped with rear and side reflectors. Be sure rear and side reflectors are properly mounted. Poor visibility of rider to other motorists can result in death or serious injury. (00336b)

⚠ WARNING

Rider and passenger safety depend upon the correct installation of this kit. Use the appropriate service manual procedures. If the procedure is not within your capabilities or you do not have the correct tools, have a Harley-Davidson dealer perform the installation. Improper installation of this kit could result in death or serious injury. (00333b)

INSTALLATION

Docking Point Installation

NOTE

The Fender Mounting Kit must be installed first before installing Detachable Saddlebag Kit.

Install the Fender Mounting Kit per the instruction sheet included with the kit.

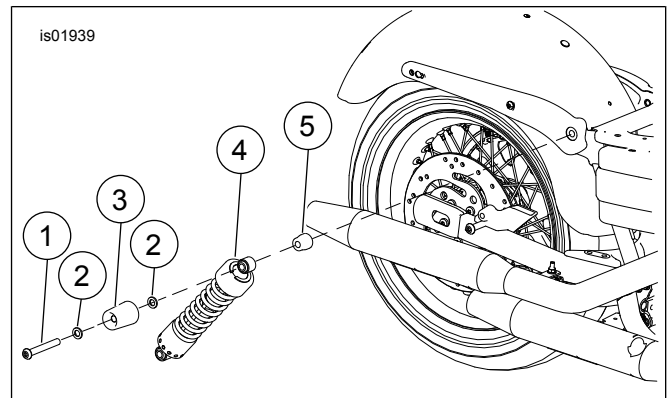


Figure 1. Remove Stock Rear Shock

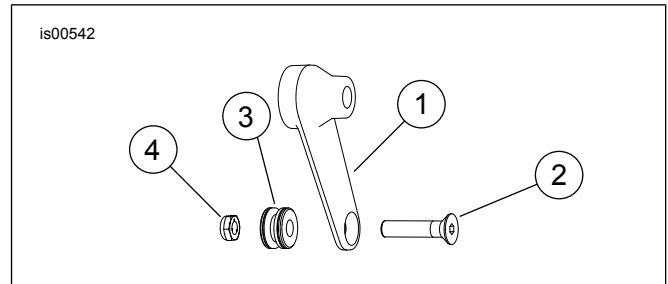


Figure 2. Assemble Third Point Arm

Third Point Arm Installation

NOTE

Perform the following procedure on one side of the motorcycle at a time. This will eliminate the need for raising the rear end of the motorcycle. If it is necessary to remove both shocks at once, place the motorcycle on a center stand with the rear wheel raised off the ground.

1. See Figure 1. Remove the upper (1) and lower shock mounting bolts. Discard all the bolts, stock shock spacer (5), all washers (2) used on the upper shock bolt, and discard the upper chrome shock cover (3) on models equipped with upper shock covers.

- See Figure 2. Assemble a 3/8 x 1-1/4 flat head screw (2), docking point (3) and lock nut (4) to each shock spacer (1) as shown. Tighten to 28–37 N·m (21–27 ft-lbs).

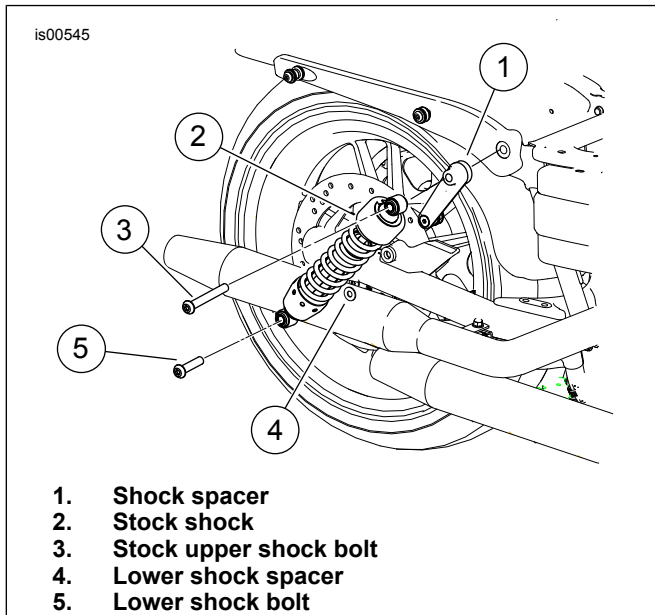


Figure 3. Third Docking Point Installation

- See Figure 3. Apply Loctite 243 to the kit's lower shock bolt (5) and assemble the lower shock to the rear fork with the new lower shock spacer (4) between the shock and the rear fork. Tighten the lower shock bolt to 41–61 N·m (30–45 ft-lbs).
- Use a 1/2-13 in. tap to clean the tapped upper shock mounting hole on the frame of any Loctite or debris.

NOTE

The upper shock bolts will be tightened to specific torques after the shock spacer is installed and all saddlebag supports are aligned.

The saddlebag installation procedure below must be performed immediately following Step 7 to prevent the Loctite from curing before the upper shock bolt is tightened to the specified torque.

Do not install any of the washers or the shock cover that were removed in Step 1.

- Place the new upper shock bolt (3) through the upper eye of the shock (2) and slide on the new shock spacer (1), as shown, orienting the arm of the shock spacer so that it is directly behind the shock. Be sure to use the correct shock spacer on the correct side as the right side spacer has a longer arm than the left.
- Hand tighten the upper shock bolt so that the arm of the shock spacer is held in position but can be easily adjusted.
- Repeat steps 1-6 on the other side.

Saddlebag Installation

- Open the saddlebag.

- See Figure 4. Pull on the knob (1) and rotate it towards the rear of the bag. The latch (2) on the back of the bag should swing into the open position.

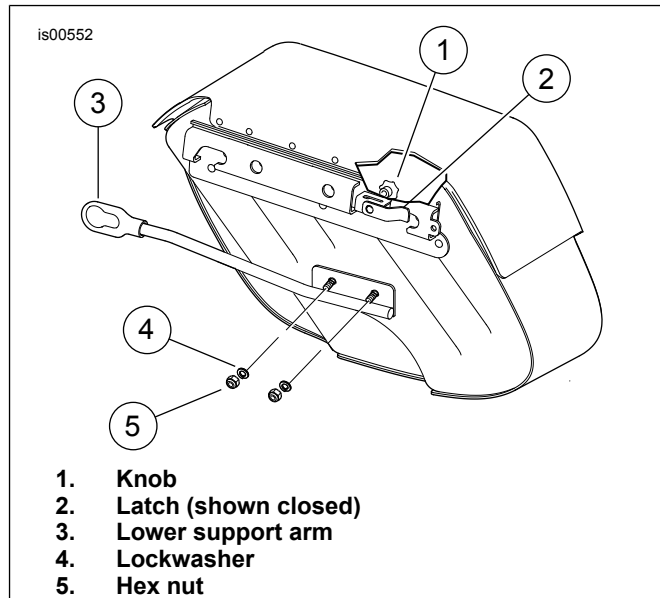


Figure 4. Rear View of Saddlebag

- Approach the bike with the bag tipped forward and swing the large diameter of the keyhole end of the lower support arm over the third point docking point. Swing the body of the bag down so that the outer docking points on the strut cover slide into the slots of the bracket on the back of the bag.
- Slide the bag forward on the bike making sure that it is fully seated into all three docking points.
- With the bag as far forward as possible, rotate the latch knob toward the front of the bag. If the bag is seated properly, the knob should pop back in. Look behind the bag and make sure that the latch is in the closed position.
- Rotate the shock spacer so that the third point docking point is fully seated into the smaller diameter of the lower support arm. Tighten the upper shock mounting bolt to 102–115 N·m (75–85 ft-lbs).
- See Figure 4. If adjusting the shock spacer in Step 6 causes the bag or lower support arm to be lifted or pushed down, loosen the lock nuts holding the lower support arm to the saddlebag and adjust the arm forward or back as needed. If loosened, tighten the support arms to 7–10 N·m (60–90 in-lbs).
- Repeat for the other side.

Reflector Installation

⚠ WARNING

Federal Motor Vehicle Safety Standard (FMVSS) 108 requires motorcycles to be equipped with rear and side reflectors. Be sure rear and side reflectors are properly mounted. Poor visibility of rider to other motorists can result in death or serious injury. (00336b)

1. Place a small amount of paint on ends reflector mount studs.
2. Measure approximately 1-1/2 in. (38 mm) from the bottom edge of the saddlebag. Orient the reflector horizontally, and carefully center the reflector mount between the straps. Gently press reflector mount to saddle bag to paint marks transfer and punch or drill small holes through saddlebag where paint marks transferred to saddlebag.
3. Remove adhesive backing from reflector, and firmly press reflector into reflector mount.
4. Install reflector assembly to saddlebag, and secure with push nuts.
5. Repeat for the other saddlebag.

Maintenance

Docking Point Bolts

NOTE

After 500 miles (800 km) of on-road use with the saddlebags installed, it is necessary to check the torque on the saddlebag mounting bolts. Check to make sure the torque is still 28.5–36.6 N·m (21–27 ft-lbs). Re-tighten bolts if necessary.

Saddlebag Docking Points

NOTE

In time, the docking points may wear, causing the lower front support brackets to become loose. The fit may be tightened using the following procedure:

1. Loosen the docking hardware.
2. Rotate the docking points clockwise approximately 45 degrees.
3. Tighten the docking hardware to 28–37 N·m (21–27 ft-lbs).

This procedure can be repeated up to 3 times before replacement of the docking points is recommended.

Saddlebag Care

Apply the Leather Dressing included with the saddlebag kit according to the supplied directions.

NOTE

Genuine Harley-Davidson Leather Dressing (part number 98261-91V) is available for purchase from any Harley-Davidson Dealer.

SERVICE PARTS

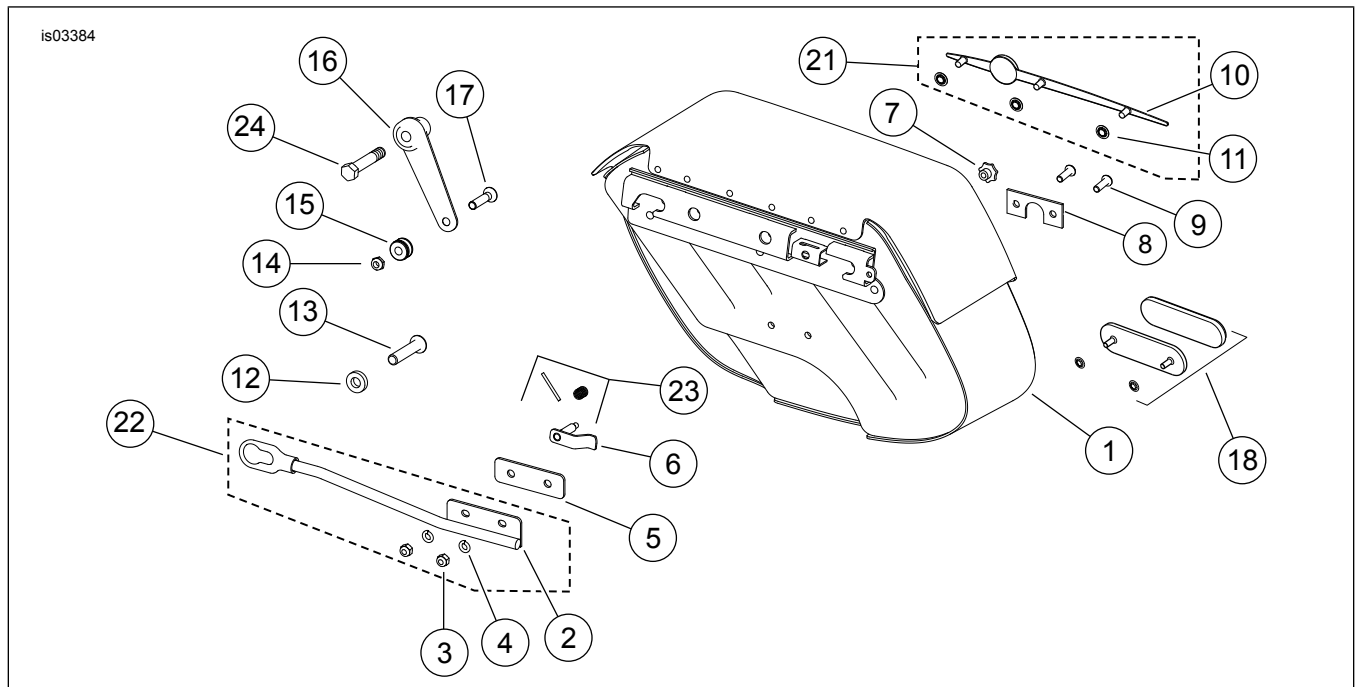


Figure 5. Service Parts: DYNA DETACHABLE SADDLEBAGS

Table 1. Service Parts: Dyna Detachable Saddlebags

Item	Description (Quantity)	Part Number	Item	Description (Quantity)	Part Number
1	Right Saddlebag	90461-06A	15	Mini docking point (2)	53967-06
	Left Saddlebag	90462-06B	16	Right shock spacer (long)	92139-06A
	Items 2 through 11 are pre-installed on the saddlebag				
2	Bracket, support (lower)	See Service Kits	17	Left shock spacer (long)	90574-06A
3	Lock nut, 5/16 in. (2)	7739	18	3/8 x 1.25 in. flat head screw (2)	4581
4	Lockwasher, 5/16 in. (2)	7041	19	Reflector Kit (2)	59480-04
5	Isolator	Not Sold Separately	20	Fender Mount Kit (packaged separately) (not shown)	91822-06
				Clip, male with chrome buckle (not shown)	88295-07

Table 1. Service Parts: Dyna Detachable Saddlebags

Item	Description (Quantity)	Part Number	Item	Description (Quantity)	Part Number
6	Latch, right	90541-06		Leather dressing (not shown)	Not sold separately
	Latch, left	90542-06			
7	Knob	90585-06		The following Service Kits are available:	
8	Bolt plate	Not Sold Separately	21	Ornamental kit, Right Hand	90458-04
9	Button head screw, 5/16 x 1 in. (2)	4016		Ornamental kit, Left Hand	90459-04
10	Ornament, saddlebag lid	See Service Kits	22	Lower support arm kit, Right Hand	90637-06
11	Pushnut (3)	8126A		Lower support arm kit, Left Hand	90642-06A
12	Lower shock spacer (2)	92140-06	23	Latch spring kit	90624-06
13	Lower shock bolt (2)	4580	24	1/2 x 4.00 in. Hex bolt	54718-06A
14	3/8 in. lock nut (2)	7667			