



# INSTRUCTIONS

J02584

2013-11-01



## SHIFTER LINKAGE COVER

### GENERAL

#### Kit Numbers

46300-01, 46302-01, 46304-01

#### Models

For model fitment information, see the P&A retail catalog or the Parts and Accessories section of [www.harley-davidson.com](http://www.harley-davidson.com) (English only).

#### ▲ WARNING

**Rider and passenger safety depend upon the correct installation of this kit. Use the appropriate service manual procedures. If the procedure is not within your capabilities or you do not have the correct tools, have a Harley-Davidson dealer perform the installation. Improper installation of this kit could result in death or serious injury. (00333b)**

#### NOTE

*A Service Manual for your model motorcycle is available from any Harley-Davidson dealer.*

### INSTALLATION

1. See Figure 1. Loosen the shifter-rod jam nuts (2).

#### NOTE

*Mount the shifter-linkage cover brackets exactly as shown. Mounting the front shifter-linkage cover bracket other than under the shifter rod, or mounting the rear bracket other than on the engine side of the shifter rod could result in loose or lost brackets and shifter-linkage cover.*

2. See Figure 2. Fasten the rear mounting bracket (4) on the engine side of the shifter rod between the ball screw shell at the rear end of the rod and the jam nut as shown. Tighten the jam nut on the shifter rod to 80-120 **in-lbs** (9.0-13.6 Nm).

3. Fasten the front mounting bracket (3) on the bottom side of the shifter rod between the ball screw shell at the front end of the rod and the jam nut as shown. Tighten the jam nut to 80-120 **in-lbs** (9.0-13.6 Nm).
4. Position the cover on top of the linkage and examine the fit.
  - a. If the linkage must be adjusted to accept the cover, proceed to Step 5.
  - b. If the cover fits properly, proceed to Step 8.
5. See Figure 1 and the Service Manual. Adjust the length of the linkage, remove the link attaching nut (5), lock washer and flat washer at the forward ball screw.
6. Loosen the jam nut (2) at the front end of the shifter rod, and remove the mounting bracket installed in Step 3. Rotate the forward ball screw shell to achieve the proper length to allow mounting of the cover.
7. Attach the ball screw to the shifter lever with the flat washer, lock washer and nut removed in Step 5. Tighten the nut to 70-90 **in-lbs** (7.9-10.2 Nm).
8. See Figure 2. Bend the tabs (8) of each mounting bracket toward the jam nut (7).
9. Fasten the cover (1) to the mounting brackets using the two short screws (2) from the kit. Fasten the rear of the cover first (the rear of the cover is marked "rear" on the inside). It may be necessary to move the shifter rod into the "downshift" position to fasten the rear screw. Tighten the screws to 8-10 **ft-lbs** (10.8-13.6 Nm).
10. If the linkage needed adjustment (Steps 5 through 7), the position of the shift foot levers (6) may have changed. To return the levers to their original position, loosen the socket head screws holding the levers to the shaft. Pull the levers from the shaft, rotate them to the desired angle and slide them back onto the shaft. Tighten the screws to 18-22 **ft-lbs** (24.4-29.8 Nm).



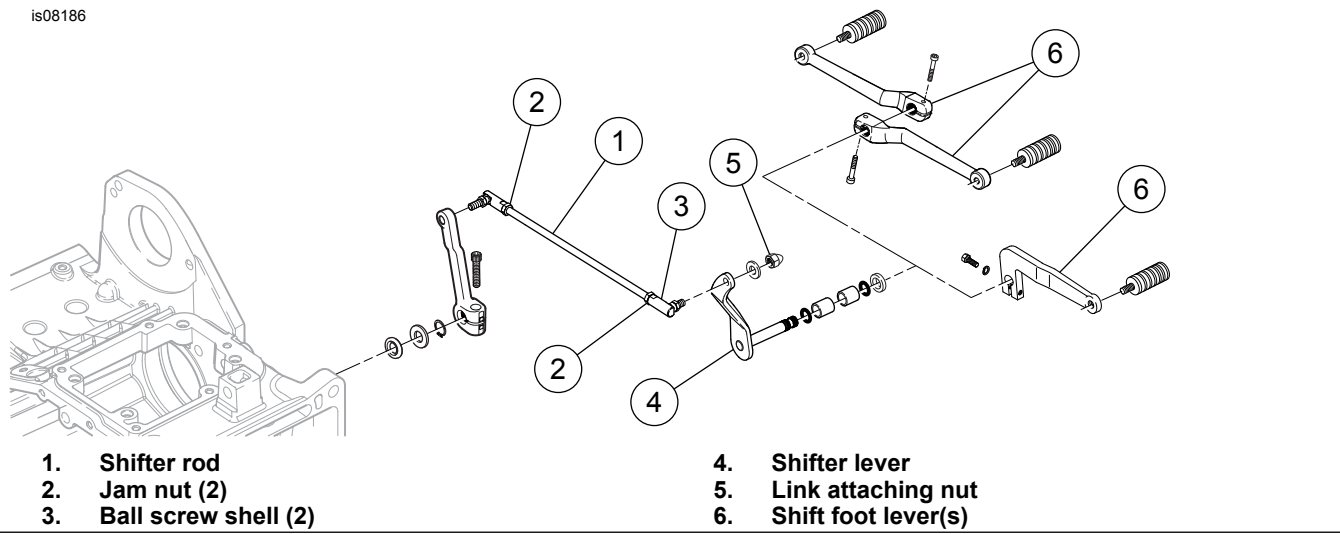


Figure 1. Stock Shifter Linkage

## Service Parts

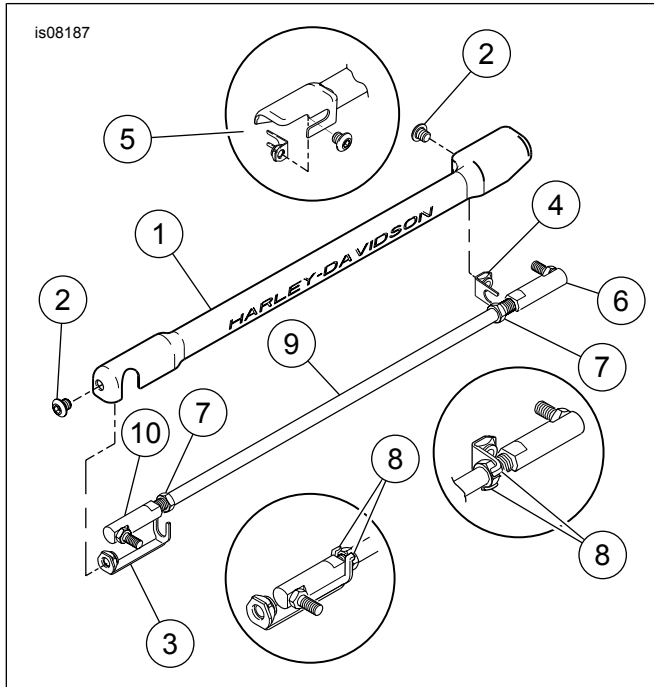


Figure 2. Service Parts

Table 1. Service Parts

Item	Description (Quantity)	Part Number
1	Linkage cover	Not sold separately
2	Screw 1/4-20 x 1/4 in (2)	91762-01
3	Mounting bracket (front)	91775-01
4	Mounting bracket (rear)	91763-01
5	Interior view of linkage cover (rear)	
6	Rear ball screw shell	
7	Jam nut	
8	Mounting bracket tabs to bend to jam nut	
9	Shifter rod	
10	Front ball screw shell	
11	Allen wrench, 5/32 in. (not shown)	Not sold separately