



INSTRUCTIONS

J01601

2005-09-20



5-3/4 INCH HEADLAMP TRIM RING

GENERAL

Kit Number

69623-99A and 69735-05

Models

These kits fit 1994 and later FXLR, FXST, FXSTC, FXSTB models, 1994 and later Dyna models, 2004 and later XL883, XL883L, XL883R, XL1200L, and XL1200R models and 2005 VRSCB model motorcycles.

Kit Contents

See Figure 2 and Table 1.

INSTALLATION

1. Loosen screw from the original equipment headlamp trim ring and remove ring.
2. Remove screw and nut from accessory trim ring assembly and set aside temporarily.
3. See Figure 1. If not already installed, place one rubber strip (2) inside trim ring (1) as shown.
4. See Service Parts Illustration. Insert the glass lens assembly (A) inside rubber strip (4) and trim ring (3), as shown.

NOTE

Rotating the lens may help insertion.

5. Install trim ring onto the main lamp housing (B). Assemble nut (2) and screw (1). Tighten securely.

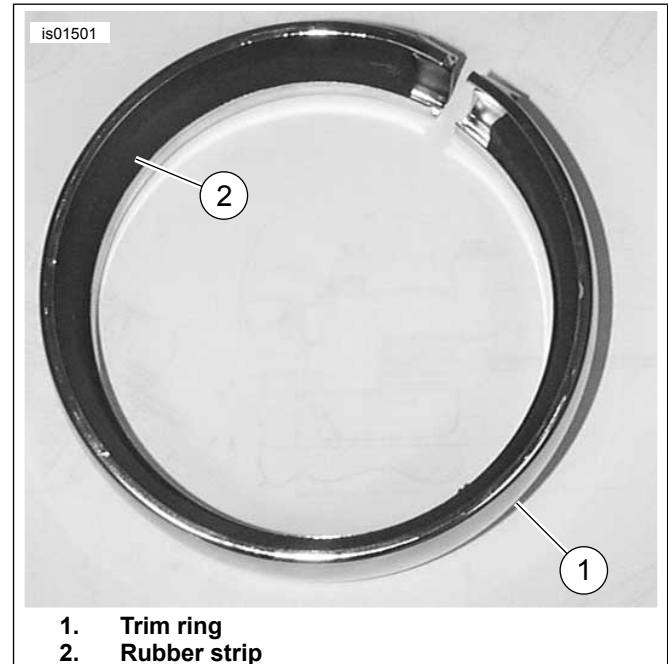


Figure 1. Installed Rubber Strip

SERVICE PARTS

See Figure 2 and Table 1.



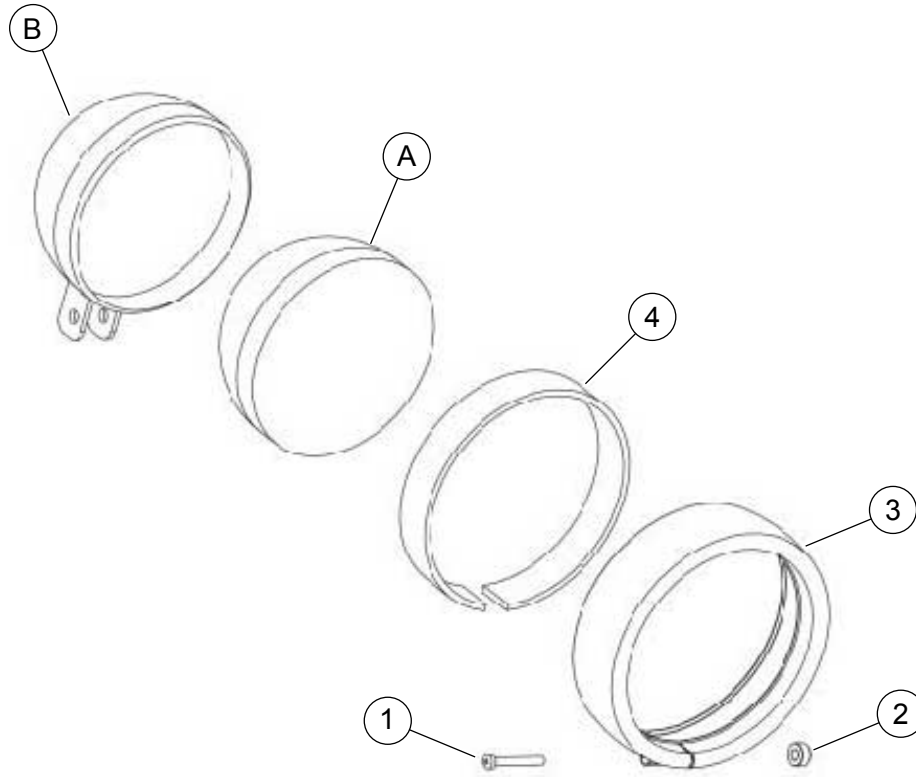


Figure 2. Service Parts: Headlamp Trim Ring

Table 1. Service Parts Table

Item	Description (Quantity)	Part Number
1	Screw	3824
2	Nut	8006
3	Trim Ring	Not sold
4	Rubber strip	69679-00
Items mentioned in text, but not included in kit:		
A	Glass lens assembly	
B	Main lamp housing	