



INSTRUCTIONS

J02167

2006-05-07



BREATHER HOSE COVER KIT

GENERAL

Kit Number

37961-02

Models

This kit fits 2002-2006 Touring models. Must be used with Interface Cover, Part Number 66096-02 or 66503-02. (Does not fit with Lifter Block Cover Part Number 18248-99 or Starter Solenoid Cover Part Number 31724-98.)

Additional Parts Required

One of the Engine Interface Cover Kits Number 66096-02 or 66503-02 must be installed prior to installation of this kit, which must be purchased separately and are available from your Harley Davidson Dealer.

NOTE

A Service Manual for your model motorcycle is available from a Harley-Davidson Dealer.

Kit Contents

See Figure 3 and Table 1.

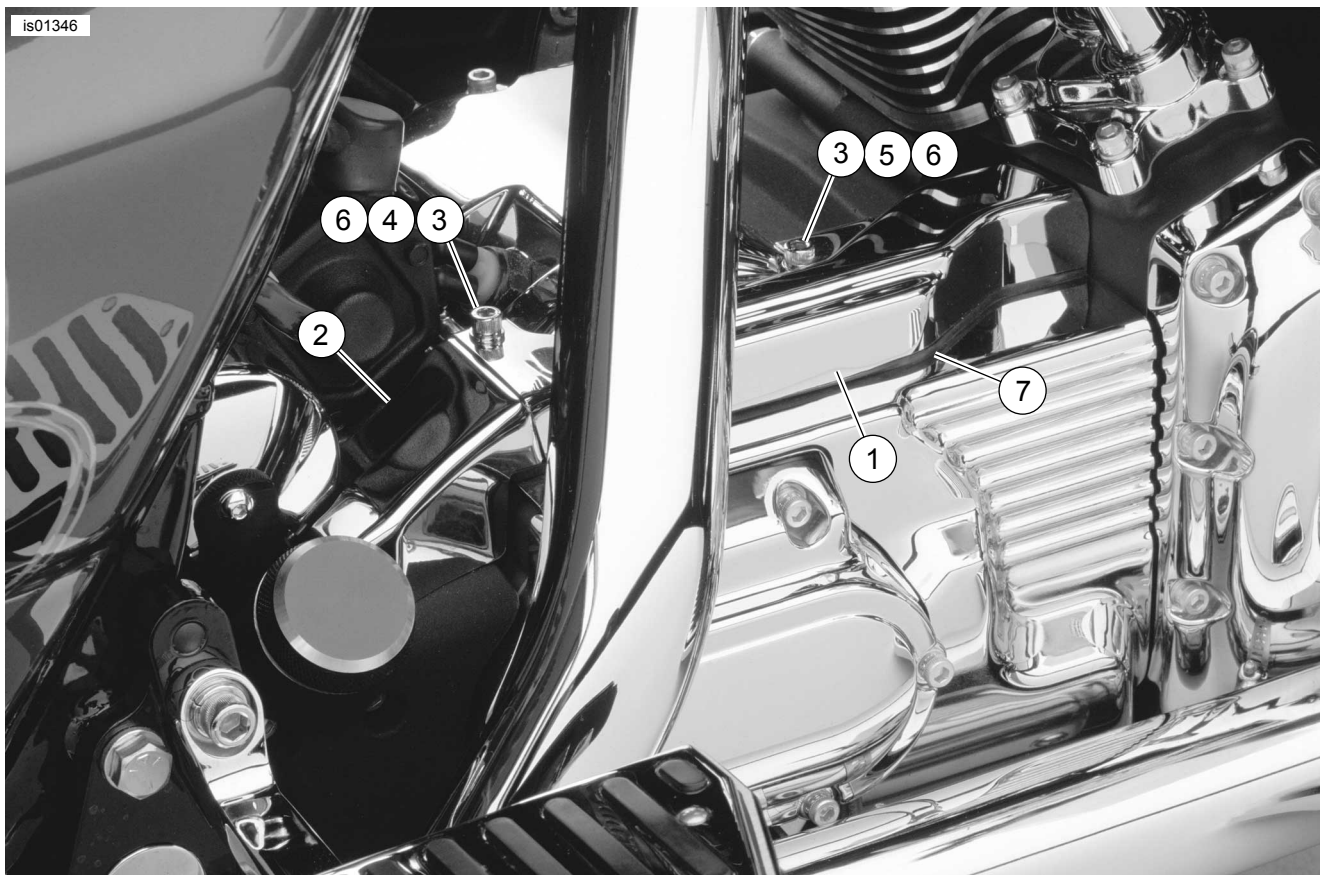
INSTALLATION

NOTE

Install the rubber U-channel as described below. Failure to install the U-channel may result in cosmetic damage to the engine interface cover.

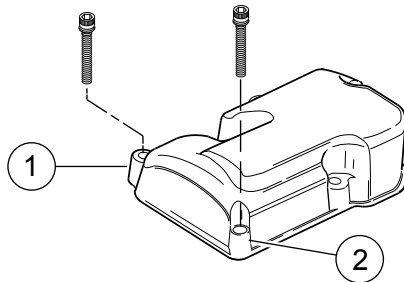
1. See Figure 3 and Figure 1. Align the rubber U-channel (7) along the bottom of the front (longer) cover piece (1) as shown (a small portion will go over the short cover, once it is installed). It may be necessary to trim some of the excess length off of the U-channel, once it is installed.





- | | |
|--|--|
| <ol style="list-style-type: none"> 1. Cover, long 2. Cover, short 3. Screws (2) 4. Spacer, short (installed under cover) | <ol style="list-style-type: none"> 5. Spacer, long (installed under cover) 6. Washers (2) 7. Rubber U-channel |
|--|--|

Figure 1. Installed Breather Hose cover (shown with Kit 66503-02 installed)



1. Location 1
2. Location 2

Figure 2. Remove these screws

2. See Figure 2. Remove the two indicated screws from the transmission cover top.

3. The rear (short) cover (2) will go on first. Place the shorter spacer (4) over the hole in location 1. Place the rear cover (2) over the spacer, lining up the hole in the cover with the hole in the spacer as indicated in Figure 3.
4. Place the longer spacer (5) over the hole in location 2. Place the front cover (1) on top of the spacer (5), so that the hole in the cover lines up over the spacer. The rear hole in the front (long) cover will install over the rear (short) cover as shown.
5. Install the screws (3) and washers (6) from the kit into the spacers and covers. Tighten to 9.5–12 N·m (7–9 ft-lbs). Once the kit is installed, be certain that the U-channel fits tightly against the Engine Interface Cover, otherwise the U-channel may fall off. It may be necessary to raise or lower the interface cover slightly to achieve a snug fit.

SERVICE PARTS

is01347

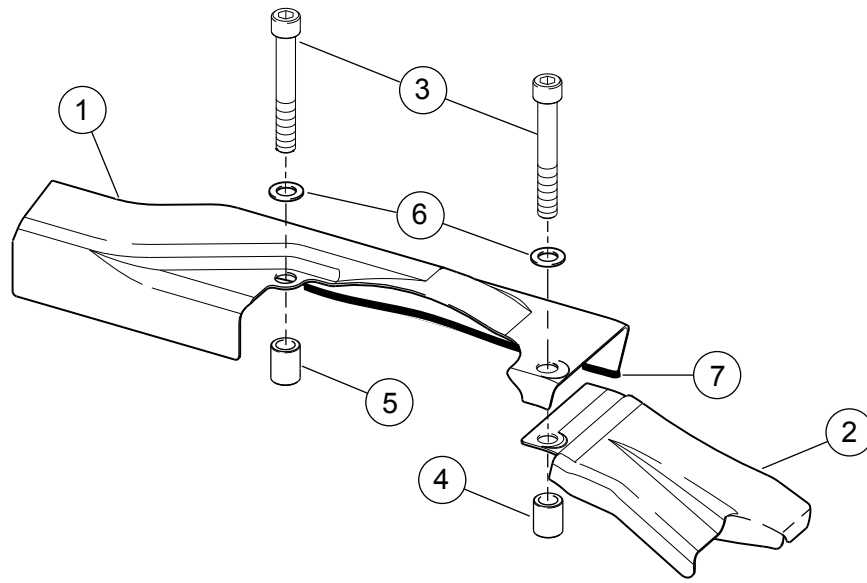


Figure 3. Service Parts: Breather Hose Cover Kit

Table 1. Service Parts: Breather Hose Cover Kit

Item	Description (Quantity)	Part Number
1	Cover, long	Not Sold Separately
2	Cover, short	Not Sold Separately
3	Screws (2)	Not Sold Separately
4	Spacer, short	Not Sold Separately
5	Spacer, long	Not Sold Separately
6	Washers (2)	Not Sold Separately
7	Rubber U-channel	Not Sold Separately