



# INSTRUCTIONS

J03669

2010-09-17



## SPORT LUGGAGE RACKS

### GENERAL

#### Kit Numbers

Table 1. Sport Luggage Rack Kits

Kit Number	Rack Description
53896-06	Softail Five Bar (Chrome)
53953-06	Softail Custom Tapered (Chrome)
53965-06	Softail Five Bar (Wrinkle Black)
53982-08	Dyna Five Bar Tapered (Chrome)
54049-10	Dyna Five Bar Tapered (Gloss Black)
54055-10	Dyna Five Bar Tapered (Chrome)
54263-10	Softail Custom Tapered (Gloss Black)
50300030	Custom Tapered Sport (Chrome)
50300031	Custom Tapered Sport (Gloss Black)

#### Models

For model fitment information, see the P&A retail catalog or the Parts and Accessories section of [www.harley-davidson.com](http://www.harley-davidson.com) (English only).

#### Additional Parts Required

**Separate purchase** of additional parts or accessories may be required for proper installation of this Luggage Rack on this model motorcycle. See the P&A retail catalog or the Parts and Accessories section of [www.harley-davidson.com](http://www.harley-davidson.com) (English only) for a list of required parts or accessories for this model.

#### Tools and Supplies Required

Loctite<sup>®</sup> 271 Threadlocker and Sealant - Red (H-D Part Number 99671-97) is required for the proper installation of this kit. This item is available from a Harley-Davidson dealer.

#### Kit Contents

See Figure 1 and Table 2.

### INSTALLATION

#### NOTE

Cover the rear fender with an H-D Service Cover or clean shop towel to prevent scratching the finish.

#### Rigid Mount Sideplates Only

- See Figure 1. **Loosen** front two 3/8-16 TORX screws that attach rigid mount sideplates (A).
- Loosen and **remove** rear two sideplate screws.
- Raise sissy bar/sideplate assembly to gain access to screws (2) that attach sissy bar (B) to sideplates.

#### Rigid and Detachable Sideplates

- Remove and discard four button head TORX screws (2) that attach sissy bar to sideplates.

- Position luggage rack (1) between the sideplates.
- Apply Loctite 271 - Red to **new** TORX screws (2) from kit, and insert screws through holes in luggage rack, sideplate and sissy bar. Tighten screws to 10.8–13.6 N·m (8–10 ft-lbs).

#### NOTE

When properly installed the bumpers will cover the lower TORX head screws, and will bend around the lower edge of the sideplate channel.

- Remove backing strip from two rubber bumpers (3) and install onto luggage rack.
  - Align notches in bumper with bottom edge of channel on sideplate.
  - Wrap bumper up side of luggage rack channel and across bottom of sissy bar.

#### Rigid Mount Sideplates Only

- Return sissy bar/sideplates to the normal position.

#### NOTE

Thoroughly remove all existing threadlocking agent from fastener and mounting hole threads before applying new threadlocking agent.

- Apply Loctite 271 - Red to the **clean** threads of the rear two TORX screws that attach rigid mount sideplates to motorcycle. Install rear two sideplate screws finger-tight.
  - Remove, clean and apply Loctite to front two screws, and install.
  - Tighten front and rear screws to 28.5–36.6 N·m (21–27 ft-lbs).

#### ▲ WARNING

**Do not exceed luggage rack weight capacity. Too much weight can cause loss of control, which could result in death or serious injury. (00373a)**

#### NOTE

- The luggage rack weight capacity is limited to a maximum of 4.5 kg (10 lb).
- Do not use this rack as a seat.
- Do not exceed the fender rack weight capacity.



## Service Parts

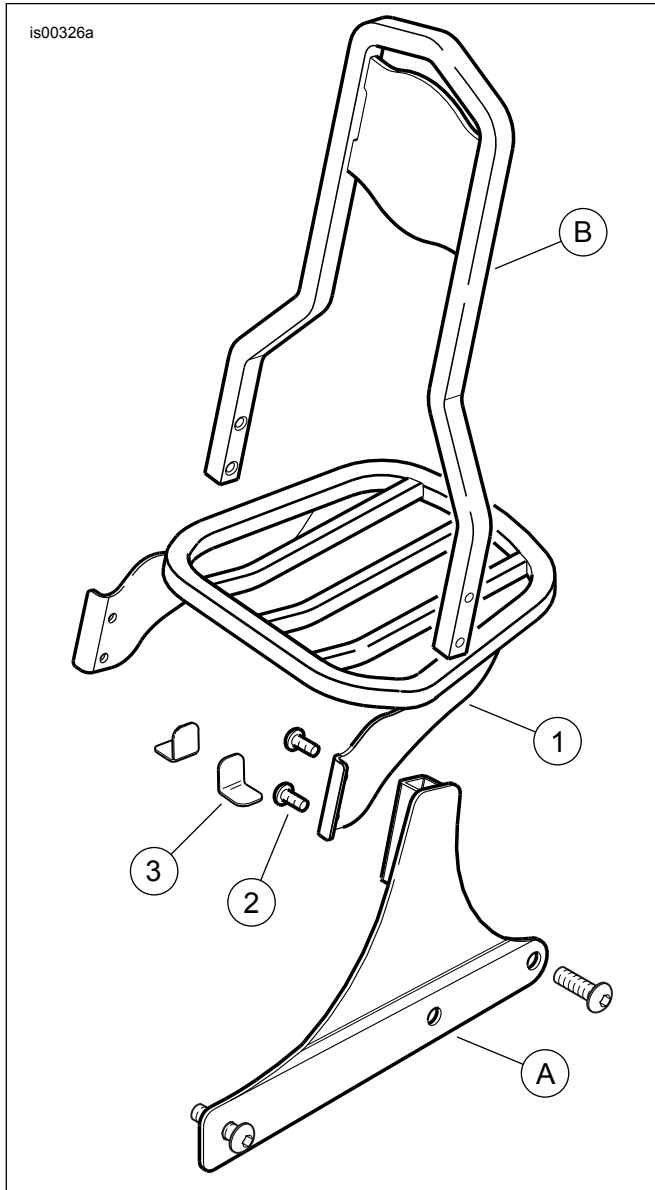


Figure 1. Service Parts, Sport Luggage Racks

Table 2. Service Parts

Item	Description (Quantity)	Part Number
1	Luggage rack (1)	Not sold separately
2	Screw, button head TORX®, 1/4-20 x 19 mm (3/4 in) long (4)	94593-98
3	Rubber bumper (2)	53707-96A
<b>Items mentioned in text, but not included in kit:</b>		
A	Sideplate	
B	Sissy bar	