



INSTRUCTIONS

J01668

2015-06-01



SPORT TOUR-PAK KIT

GENERAL

Kit Number

53929-XX

Models

These kits fit 2000 and later Softail model motorcycles equipped with Detachable Tour-Pak Rack (53066-00B) or Solo Rack (53559-04A). These kits match color schemes for 2000 and later Softail model motorcycles.

These kits also fit 2004 and later Sportster model motorcycles with a solo seat and a Detachable Tour-Pak Rack (53655-04).

These kits also fit Harley-Davidson International (HDI) FLSTC model motorcycles when equipped with License Plate Relocation Kit (60095-00).

These kits do not fit Harley-Davidson International (HDI) FLSTF or FLSTS.

Kit Contents

See Figure 3 and Table 1.

INSTALLATION

1. Remove the rubber mat lining the bottom of the tour-pak.
2. Install the tour-pak on the rack using the screws, washers and nuts provided with the rack.
 - a. See Figure 1. Align the holes in the base of the tour-pak with either of the two sets of mounting holes on the luggage rack.
 - b. See Figure 2. Insert the screws through the baseplate holes inside the tour-pak.
 - c. Tighten the screws to 25 N·m (19 ft-lbs).
3. Place the black rubber mat on the inside, bottom of the tour-pak.
4. When installing this accessory the steering head bearing must be adjusted per service manual.

⚠ WARNING

Do not exceed Tour-Pak weight capacity. Too much weight can cause loss of control, which could result in death or serious injury. (00401c)

NOTE

Maximum tour-pak weight capacity is 25 pounds (11.3 Kg).

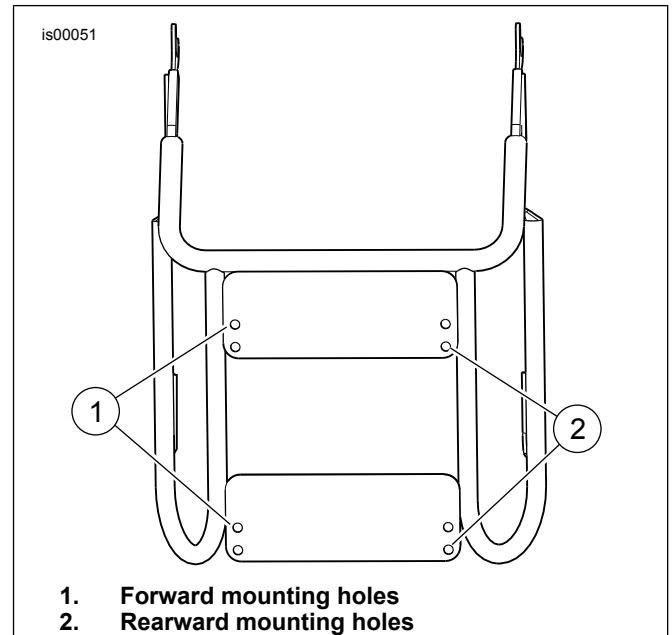


Figure 1. Top View of Detachable Rack

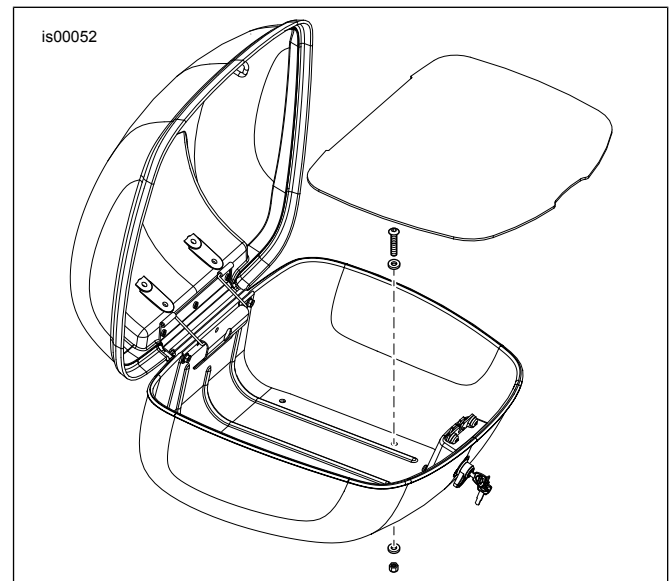


Figure 2. Tour-Pak Fasteners

SERVICE PARTS

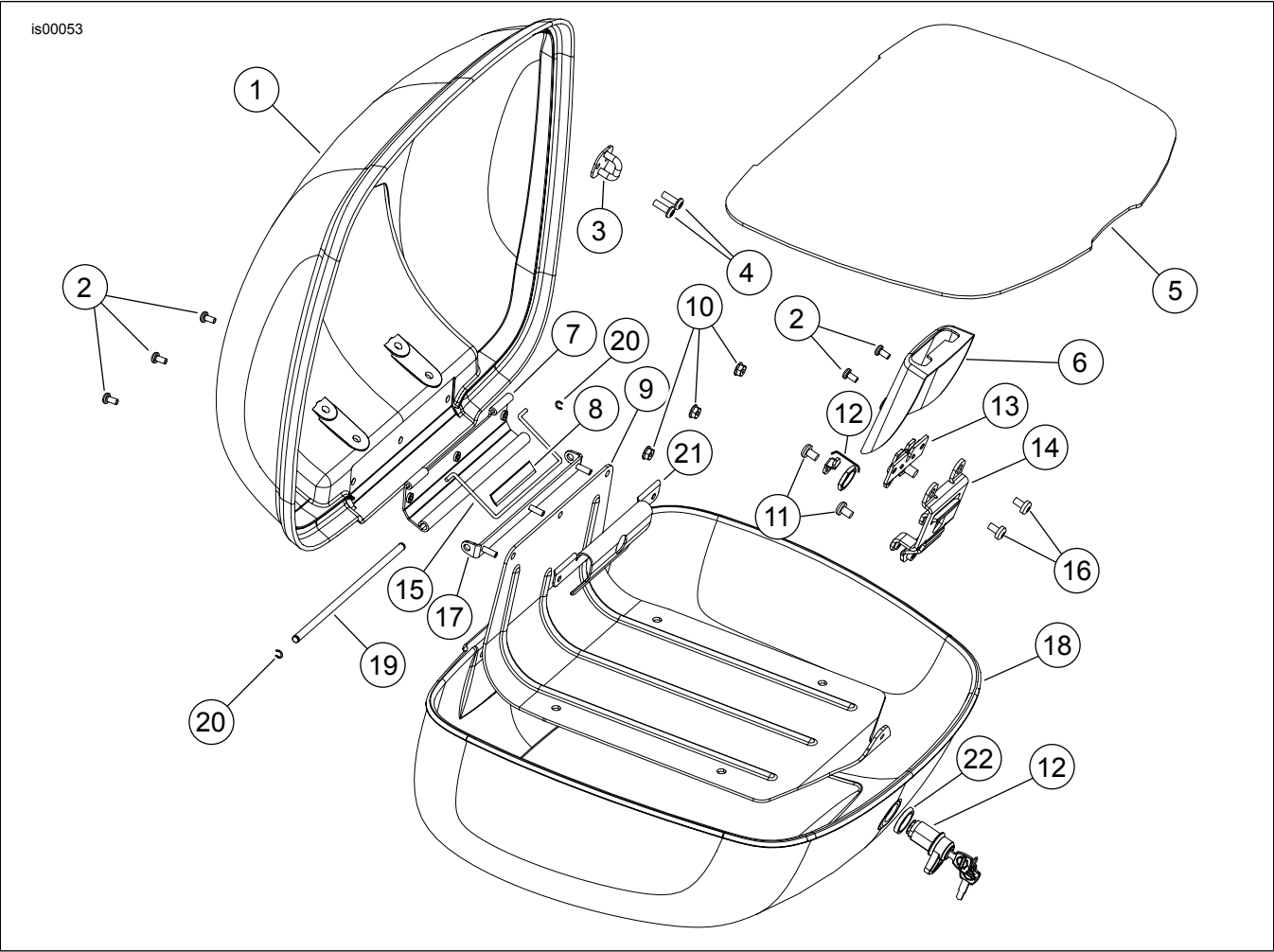


Figure 3. Service Parts

Table 1. Service Parts Table

Item	Description (Quantity)	Part Number	Item	Description (Quantity)	Part Number
1	Tour-pak lid	53885-XX	13	Latch	90166-00
2	Screw, #10-24 x 3/8 in. (5)	3018	14	Latch bracket	53888-01
3	Latch loop	53893-01	15	Hinge loop spring	53083-01
4	Screw, self-tapping, #12-16 (2)	3596	16	Screw, M6-6H (2)	1394
5	Mat	53064-01	17	Hinge catch channel	53894-01
6	Latch cover	53890-01	18	Tour-pak bucket	53886-XX
7	Hinge hook bracket	53895-01	19	Hinge pin	53085-01
8	Gasket	90174-00	20	Retaining ring (2)	11096
9	Baseplate	53201-01	21	Hinge loop guide	53084-01
10	Flange locknut, #10-24	7878	22	Gasket, lock	90290-02
11	Screw, 1/4-20 x 3/8 in. (2)	1395	23	Label, warning (not shown)	Not Sold Separately
12	Lock assembly	53891-01	24	Label, load rating	90821-74A