



# INSTRUCTIONS

J03674

2007-10-15



## CHROME TRANSMISSION HARDWARE KIT

### GENERAL

#### Kit Number

34856-06A

#### Models

For model fitment information, please see the P&A Retail Catalog or the Parts and Accessories section of [www.harley-davidson.com](http://www.harley-davidson.com) (English only).

#### NOTE

*This instruction sheet references Service Manual information. A Service Manual for your model motorcycle is required for this installation and is available from a Harley-Davidson dealer.*

### Additional Parts Required

The screws are shipped with threadlocker applied. If replacement screws are ordered, apply Loctite® 243 (Blue) 99642-97 to the threads before installing.

### Kit Contents

See Figure 1 and Table 1.

### INSTALLATION

#### ▲ WARNING

**To prevent accidental vehicle start-up, which could cause death or serious injury, disconnect negative (-) battery cable before proceeding. (00048a)**

1. Disconnect battery cable, negative (-) cable only.

#### NOTE

*The starter does not need to be removed to install this kit.*

2. Remove exhaust system only if needed to access hardware. Refer to Service Manual for instructions.

#### NOTE

*Replace existing zinc hardware with chrome-plated hardware one at a time so that gaskets do not need to be replaced.*

3. See Figure 1. Remove and discard existing six 1/4-20 x 1 in. hex socket-head screws and washers from transmission top cover (D). Install six chrome hex socket head screws (1) and washers (3) on transmission top cover. Tighten to 84-108 **in-lbs** (9.5-12.2 Nm).

4. Remove and discard existing two 1/4-20 x 1 in. hex socket head screws and washers from transmission side cover (A). Install two chrome hex socket head screws (1) and washers (3) on transmission side cover (A). Tighten to 84-108 **in-lbs** (9.5-12.2 Nm).
5. Remove and discard existing four 1/4-20 x 1-1/2 in. hex socket head screws and washers from transmission side cover. Install four chrome hex socket head screws (2) and washers (3) on transmission side cover (A). Tighten to 84-108 **in-lbs** (9.5-12.2 Nm).

### Touring, FLSTF, FLSTN, FLSTD and FLSTC Models

1. See Figure 1. Remove and discard two 5/16-18 x 1-1/2 in. hex socket head screws and washers from the bottom positions on the transmission side cover. Install two chrome hex socket head screws (4) and washers (6) from kit. Tighten to 17.6–24.4 N·m (13–18 ft-lbs).
2. Remove and discard the remaining six 5/16-18 x 1-1/4 in. hex socket head screws and washers from the transmission side cover. Install six chrome hex socket head screws (5) and washers (6) from kit. Tighten to 7.6–24.4 N·m (13–18 ft-lbs).

### All Other Softail Models

1. See Figure 1. Remove and discard eight 5/16-18 x 1-1/4 in. hex socket head screws and washers from the transmission side cover. Install eight chrome hex socket head screws (5) and washers (6) from kit. Tighten to 13-18 ft-lbs (17.6-24.4 Nm).

### Dyna Models

1. See Figure 1. Do not remove the two studs (B) in the rearward positions of the transmission side cover. Remove and discard six 5/16-18 x 1-1/4 in. hex socket head screws and washers. Install six chrome hex socket head screws (5) and washers (6) from kit. Tighten to 13-18 ft-lbs (17.6-24.4 Nm).

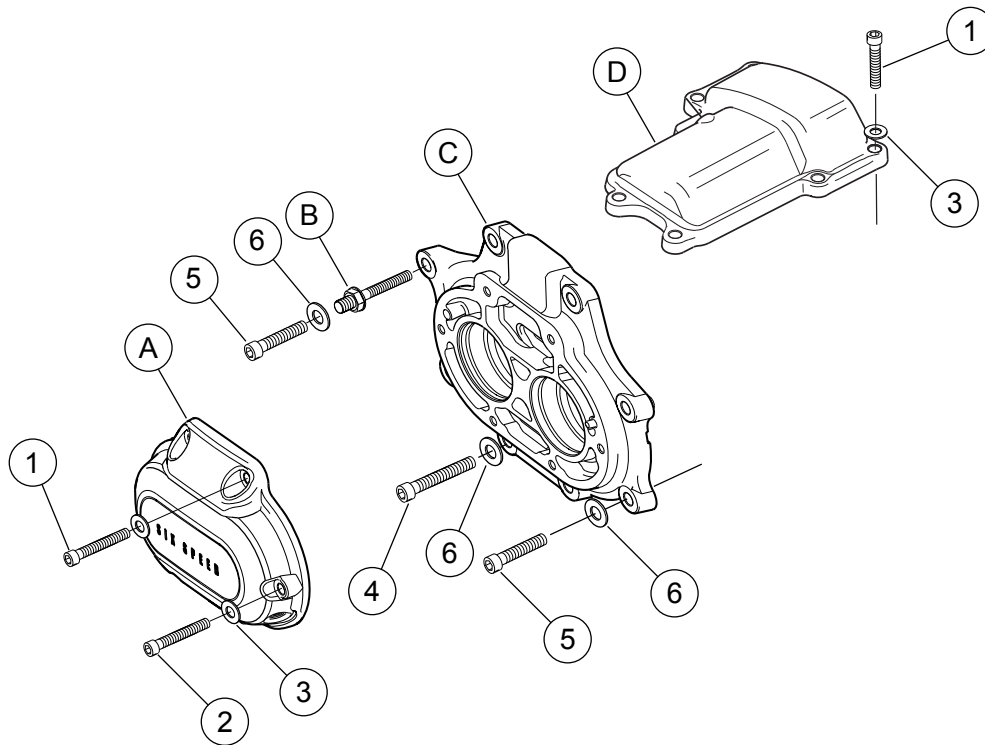
### All Models

1. Install exhaust system if previously removed. Refer to Service Manual for instructions.
2. Connect negative (-) battery cable.



# SERVICE PARTS

is05166



**Figure 1. Service Parts: Chrome Transmission Hardware**

**Table 1. Service Parts: Chrome Transmission Hardware**

Item	Description (Quantity)	Part Number
1	Screw, hex socket head, 1/4-20 x 1 in., chrome (8)	94314-91TS
2	Screw, hex socket head, 1/4-20 x 1-1/2 in., chrome (4)	94316-91TS
3	Washer, flat, 0.430 O.D. x 0.270 I.D., chrome (12)	94062-03
4	Screw, hex socket head, 5/16-18 x 1-1/2 in., (2)	94336-91TS
5	Screw, hex socket head, 5/16-18 x 1-1/4 in., chrome (6)	94335-91TS
6	Washer, flat, 0.688 O.D. x 0.344 I.D., chrome (8)	94070-03
<b>Items mentioned in text, but not included in kit:</b>		
A	Transmission side cover	
B	Studs, Dyna only (do not remove)	
C	Transmission side door	
D	Transmission top cover	