



INSTRUCTIONS

J02285

2005-10-05



DYNA PASSENGER FOOTBOARD KIT

GENERAL

Kit Number

50886-02

Models

This kit fits 2002 - 2005 Dyna model motorcycles.

Kit Contents

See Figure 4 and Table 1.

FOOTBOARD ASSEMBLY

1. See Figure 1. Place a spring and steel ball into the retaining hole in the footboard support.

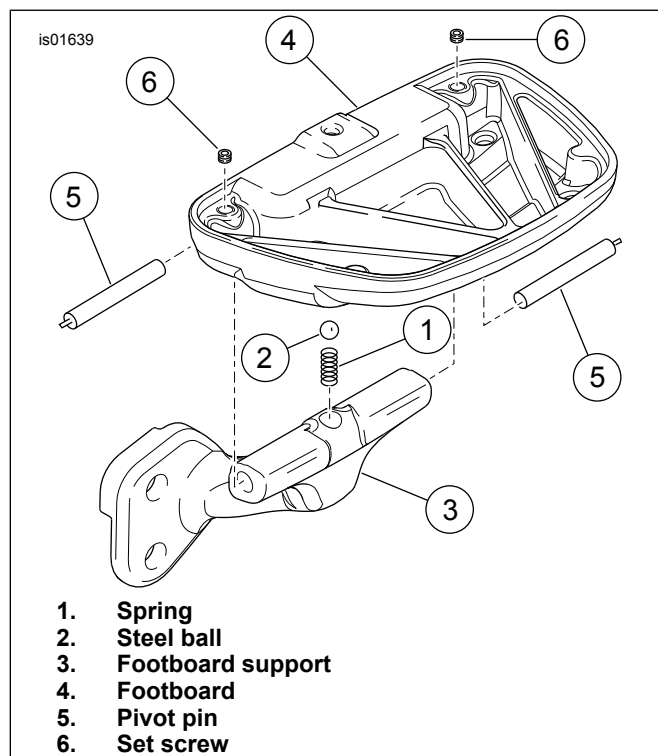


Figure 1. Typical Footboard-to-Support Assembly (1994 - 2001 Footboard Support Shown)

2. Position the footboard on the footboard support, taking care not to unseat the steel ball.
3. Press down on the footboard to align the pivot holes on the footboard with the pivot holes on the footboard support.

4. Insert pivot pins, oriented as shown, through the footboard pivot holes and into the pivot holes on the footboard support. The pins must be inserted completely such that the end of the pin is flush with the hole in the footboard pivot hole. Check that the steel ball remains seated during pivot-pin installation.
5. Center the footrest on the width of the footboard support.
6. Install setscrews through the footboard to secure the pivot pins. Tighten the setscrews securely.
7. Apply dishwashing soap liberally to the footboard-pad nipples and footboard nipple holes.
8. Align and press the rubber nipples, located on the underside of the footboard pad, into the holes on the underside of the footboard. Use a pair of pliers to gently work the nipple ends through the holes.
9. Cut the narrow rubber extensions from the tip of each nipple. Do not cut off the nipples; they hold the pad to the footboard.
10. Repeat steps 1 through 9 for the remaining footboard.

FOOTBOARD INSTALLATION

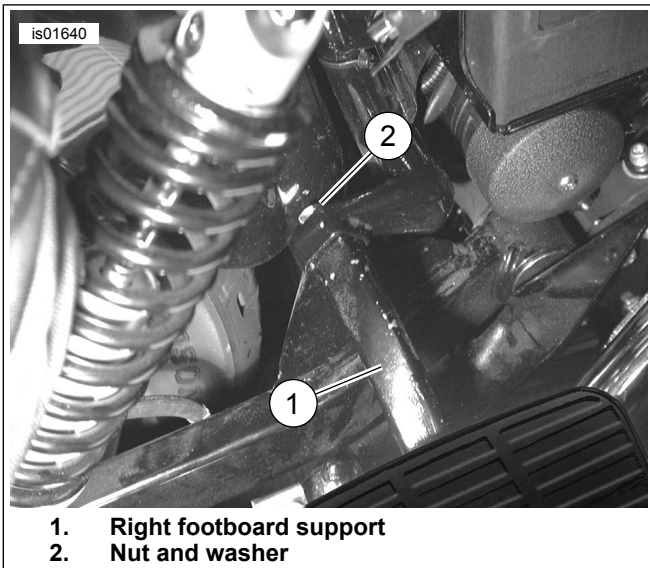
1. Remove the right-side footrest support from the frame by removing the bolt and washer fastening the footrest support to the frame. Save the bolt and washer.

NOTE

Be careful not damage paint on rear fender when removing or re-installing hardware. Place a soft cloth or similar item between wrench and fender to avoid wrench/fender contact.

2. See Figure 2. Align and install the right-side footboard assembly, oriented as shown, using the hardware saved in step 1. Tighten the fastener to 78 ft-lbs (106 Nm).

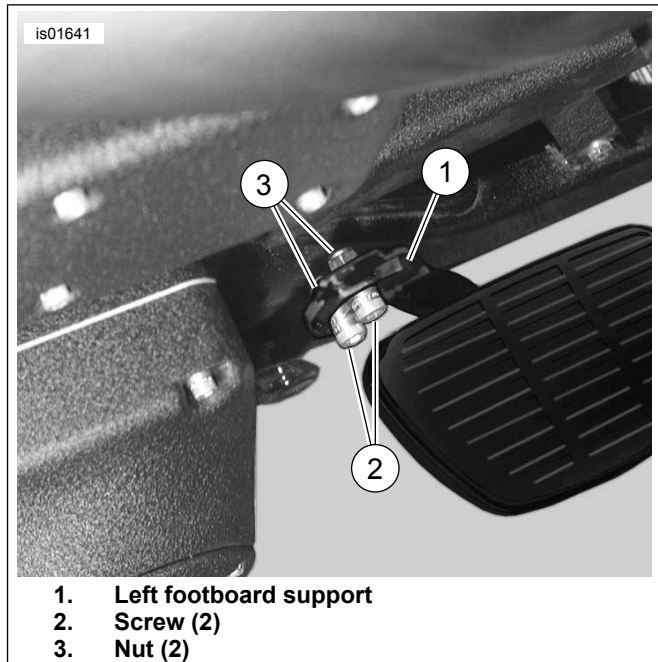




1. Right footboard support
2. Nut and washer

Figure 2. Right-Side Footboard Assembly, 1994 -2001 Shown

3. Remove the left-side footrest support from the frame by removing the bolt and washer fastening the footrest support to the frame. Save the bolt and washer.
4. See Figure 3. Align and install the left-side footboard support, oriented as shown, using the hardware saved in step 3. Tighten the bolt to 47 ft-lbs (64 Nm).



1. Left footboard support
2. Screw (2)
3. Nut (2)

Figure 3. Left-Side Footboard Assembly, 1994-2001 Shown

SERVICE PARTS

See Figure 4 and Table 1.

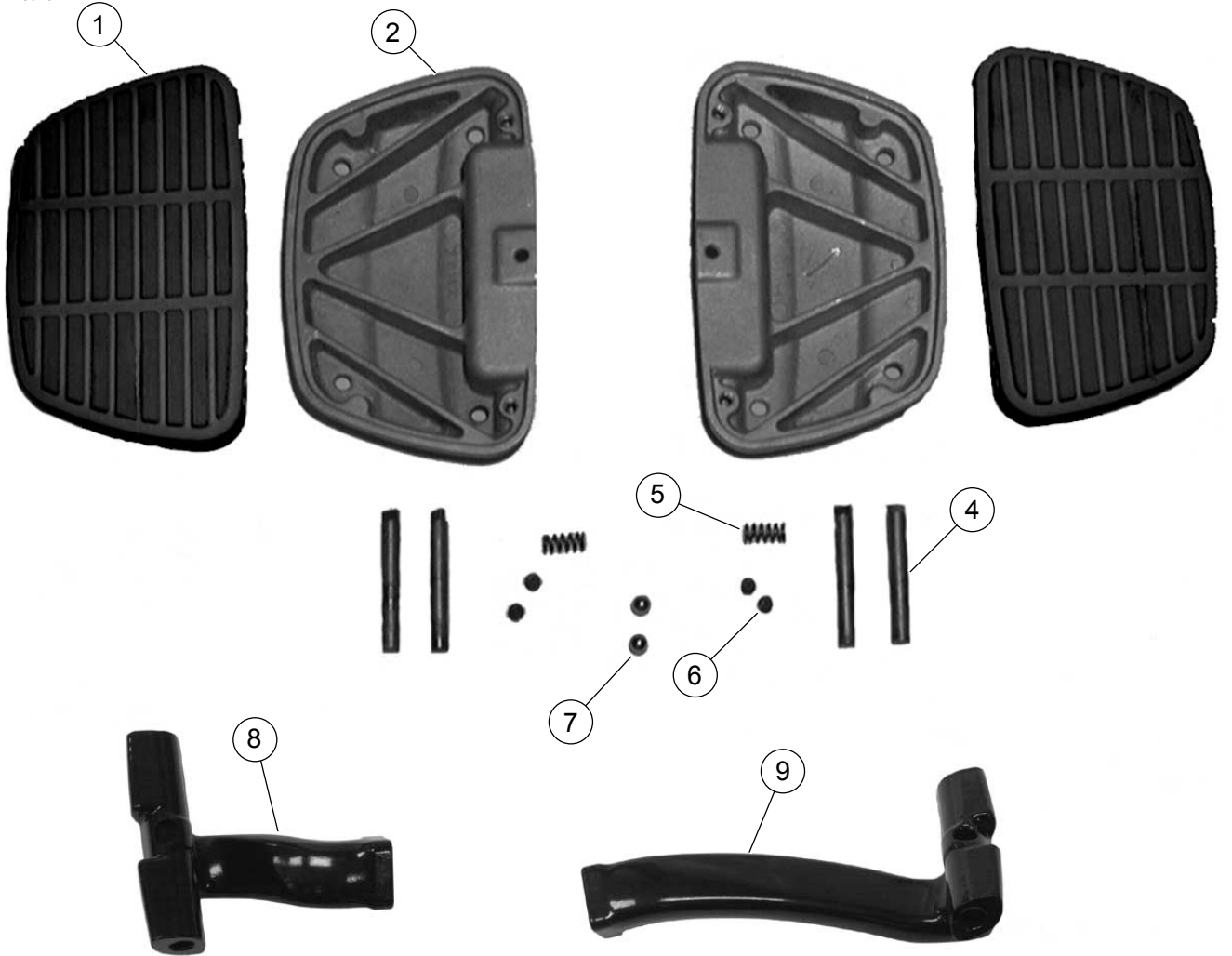


Figure 4. Service Parts: Dyna Passenger Footboard Kit

Table 1. Service Parts Table

Item	Description (Quantity)	Part Number	Item	Description (Quantity)	Part Number
1	Pad, footboard (2)	50875-01	7	Ball, steel (2)	8860
2	Footboard metal, black (2)	50881-02	8	Footboard support, left	not sold separately
3	Footboard metal, chrome (2) (not shown)	50882-02	9	Footboard support, right	not sold separately
4	Pin, hinge, footboard (4)	50876-01			
5	Spring (2)	33085-74			
6	Set screw (4)	3231B			