



INSTRUCTIONS

J03559

2006-09-21



BUELL FIREBOLT XB REMOVABLE SADDLEBAGS

GENERAL

Kit Number

91310-04Y

Models

For the most up-to-date model fitment information, please see product label or www.buell.com.

Kit Contents

See Figure 1 and Table 1.

INSTALLATION

Prepare the Motorcycle

1. Clean the underside of the tail section.
2. Follow Owner's Manual instructions to remove the passenger pillion and cover.

Install the Saddlebag Bracket

1. Using a T-27 TORX[®] drive head, remove the two screws holding the tail section under shield.
2. See Figure 1. Fit the saddlebag bracket (3) to the under shield and secure with the screws.
3. Tighten screws to 36-48 in-lbs (4-5 Nm).

Install the Reflector Relocation Brackets

⚠ WARNING

Federal Motor Vehicle Safety Standard (FMVSS) 108 requires motorcycles to be equipped with rear and side reflectors. Be sure rear and side reflectors are properly mounted. Poor visibility of rider to other motorists can result in death or serious injury. (00336b)

1. Use a thin flat blade, like an X-Acto[®] knife, and carefully pry the reflector off of the turn signal mounting brackets.
2. Remove the adhesive residue from the brackets and the back of the reflector.

NOTE

When removing adhesive residue, take care to keep from scratching or damaging the reflector, mounting bracket or surrounding parts. New reflectors (part 59256-84A) are available from your Buell dealer.

3. See Figure 1. Mount the reflector relocation brackets (4) to the stock reflector mounting brackets.
4. See Figure 1. Loosely attach each relocation bracket through the slots in the stock bracket with two screws, flat washers, and lock nuts.

5. Slide the relocation bracket to the rearmost position and tighten securely.
6. Remove the backing from the foam tape on the relocation bracket.
7. Press the stock reflector squarely onto the foam tape.

Install the Saddlebags

1. See Figure 1. Slide the mounting pocket (B) on the back side of the left (2) and right (1) saddlebags onto the saddlebag bracket arms.
2. Over the top of the tail section, pull a strap from the right saddlebag through the plastic buckle eye on the strap from the left saddlebag. Double back the strap to engage the Velcro[®] hook strip to the loop strip.
3. Repeat for the second strap.
4. To prevent damage to the finish, cut and fit lengths of the clear protective tape to those points (A) where the saddlebags and straps contact the tail section.

Return the Motorcycle to Service

⚠ WARNING

After installing seat, pull upward on seat to be sure it is locked in position. While riding, a loose seat can shift causing loss of control, which could result in death or serious injury. (00070b)

Follow Owner's Manual instructions to install the pillion.

Open and Close the Saddlebags

⚠ WARNING

Do not open storage compartments while riding. Distractions while riding can lead to loss of control, which could result in death or serious injury. (00082a)

To open saddlebags: run the outside zipper pulls in opposite directions.

To close saddlebags: run the outside zipper pulls together.

Expand the Saddlebags

⚠ WARNING

Improper loading of cargo or installation of accessories can affect motorcycle stability and handling, which could result in death or serious injury. (00099a)

- Maximum recommended load is 3 lbs (1.3 Kg) for each saddlebag.

To expand the saddlebags: unzip the single pull on the inside of the bag.

Remove the Saddlebags

The saddlebags can be removed by removing the pillion; releasing the Velcro and sliding the saddlebags off of the bracket.

SERVICE PARTS

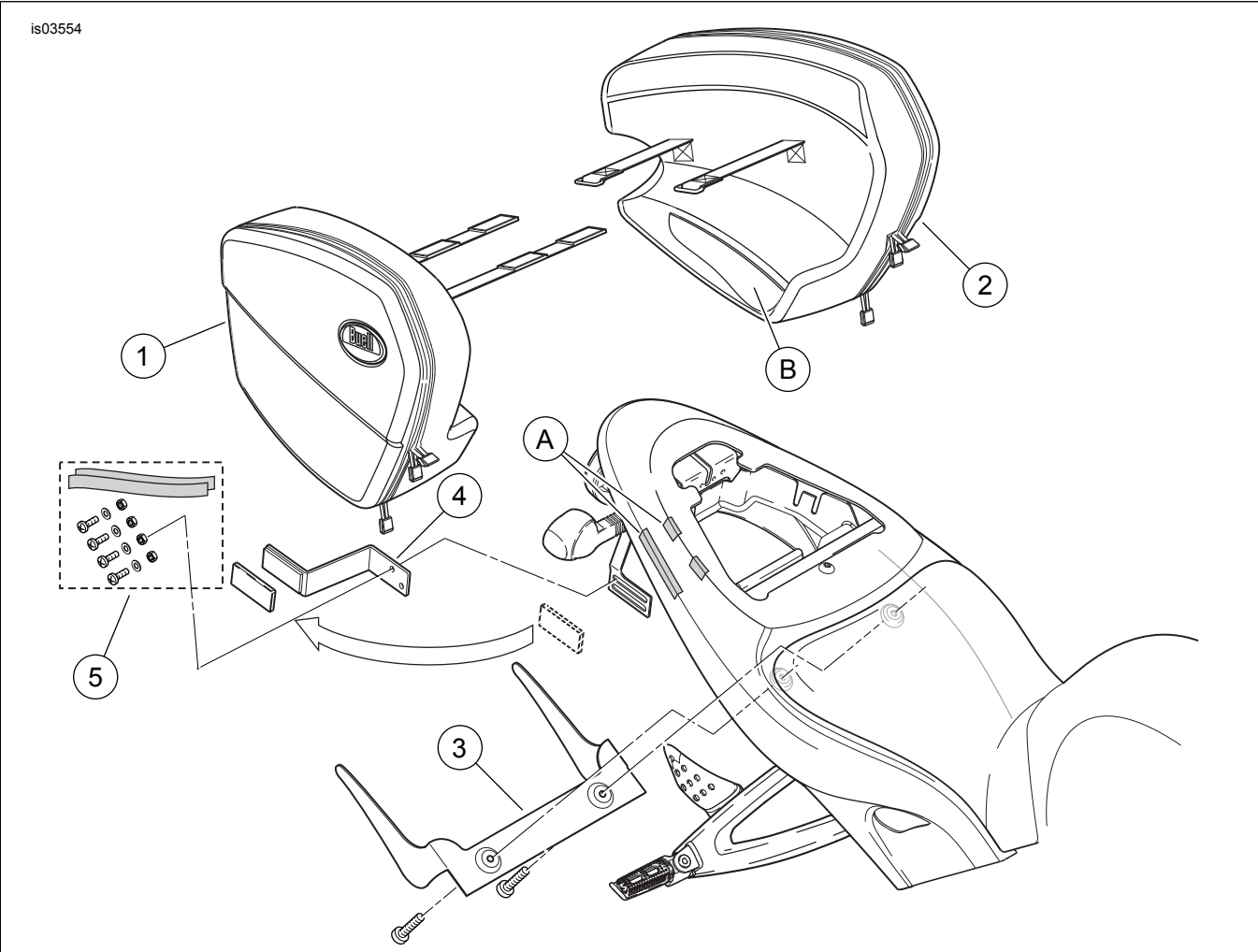


Figure 1. Service Parts: Buell Firebolt XB Removable Saddlebags

Table 1. Service Parts Table

| Item | Description (Quantity) | Part Number |
|--------------------------|--|---------------------|
| 1 | Saddlebag, right | 91311-04Y |
| 2 | Saddlebag, left | 91312-04Y |
| 3 | Bracket, saddlebag | Not sold separately |
| 4 | Bracket, reflector relocation (2) | 92163-05Y |
| 5 | Hardware Kit, reflector relocation | 92164-05Y |
| | • Screw, 1/4-20 x 3/4-inch (4) | Not sold separately |
| | • Plain washer, 1/4-inch (4) | Not sold separately |
| | • Lock nut, 1/4-20 (4) | Not sold separately |
| | • Protective tape (clear), 8-inches x 1-inch (2) | Not sold separately |
| Items mentioned in text: | | |
| A | Contact areas for protective tape | |
| B | Mounting pocket | |