



# INSTRUCTIONS

J02932

2006-04-08



## SPORTSTER VOLTAGE REGULATOR COVER

### GENERAL

#### Kit Number

74609-04

#### Models

This kit fits 2004 to 2006 XL models.

### SERVICE PARTS

### INSTALLATION

1. Remove regulator mounting screws and discard screws.
2. See Figure 1. Reinstall regulator in original location with cover (1) using lockwasher (2), spacers (3) and screws (4). Tighten mounting screws to 10-12 **in-lbs** (1.1-1.4 Nm).

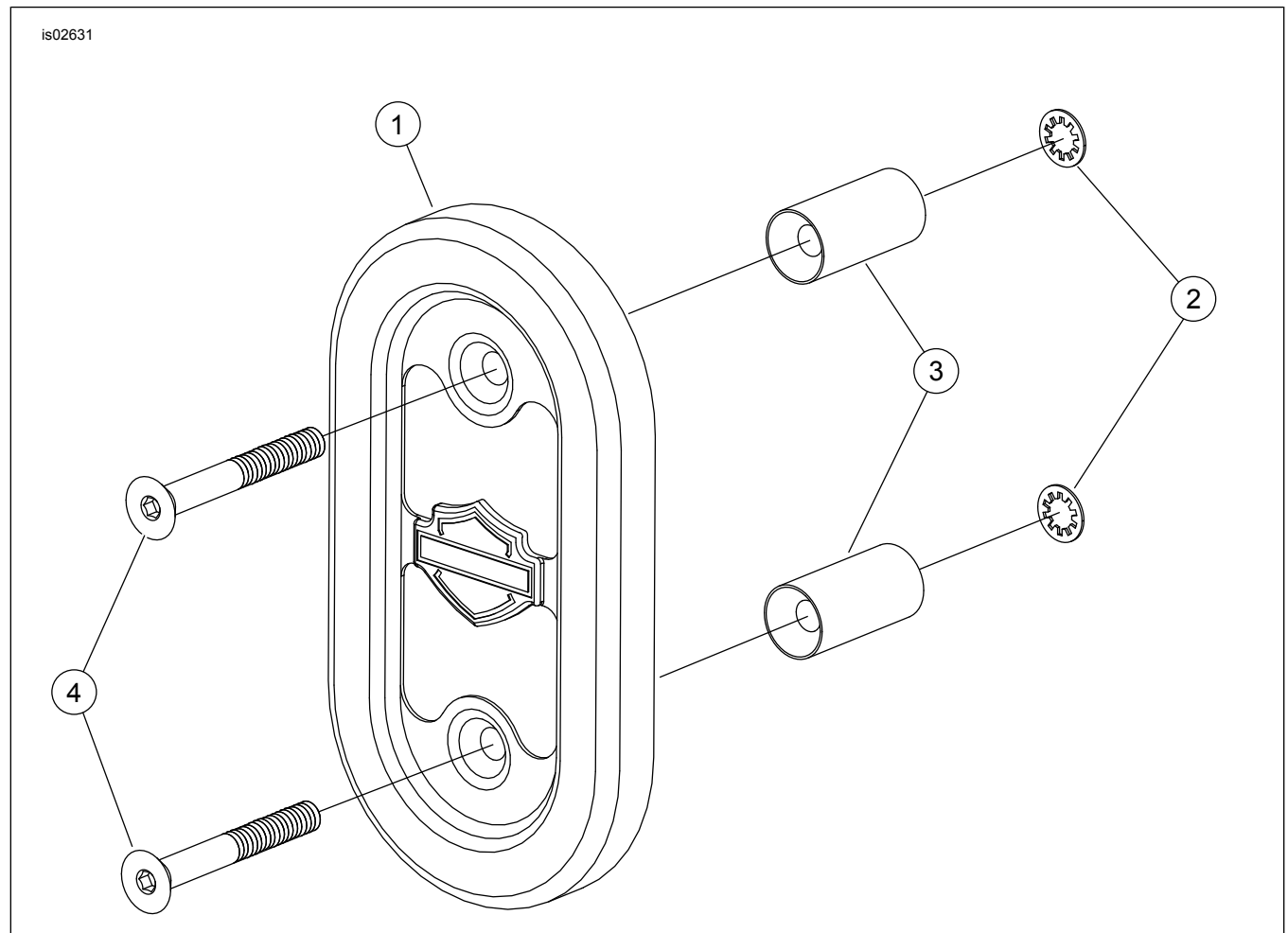


Figure 1. Service Parts: Sportster Voltage Regulator Cover