



INSTRUCTIONS

J00564

2013-11-01



LICENSE PLATE FRAME KIT

GENERAL

Kit Numbers

60050-01, 60051-01, 60065-03, 60969-10, 60949-10

Models

For model fitment information, see the P&A retail catalog or the Parts and Accessories section of www.harley-davidson.com (English only).

Kit Contents

See Figure 1 and Table 1.

INSTALLATION

1. Remove the screws and nuts fastening the license plate to the bracket.
2. Place the License Plate Frame on the bracket, aligning the bottom screw holes of the frame to the bottom screw holes of the stock bracket. Use screws to align the holes. If the bottom of the License Plate Frame covers any part of the reflector on the bottom of the stock bracket, go to step 2a. Otherwise, go to step 3.
 - a. Remove the existing reflector.
 - b. Remove the residual reflector adhesive from the bracket using isopropyl alcohol.

NOTE

The stock-bracket surface must be clean and free of dust, dirt and adhesive material for proper installation and adhesion of the replacement reflector.

3. Assemble the license plate, frame, and hardware as shown in the Service Parts illustration, with the following notes:
 - a. On FX Softail and FXDWG models with stock bracket, fasten the bottom of the License Plate Frame to the stock bracket, but do not tighten. Go to step 4.
 - b. For FX Softail and FXDWG models with License Plate Bracket Cover 59720-01A, fasten the bottom of the License Plate Frame and license plate to the cover and bracket. Tighten the fasteners to 10 in-lbs (1.1 Nm). Go to step 5.
 - c. All other installations, fasten the bottom of the frame and license plate to the stock bracket. Tighten the fasteners to 10 in-lbs (1.1 Nm). Go to step 5.
4. Place a block of wood between the rear tire and the stock bracket.
 - a. Use the license plate frame as a template to mark the frame's two upper mounting locations on the stock bracket. Remove the frame from the bracket.
 - b. Drill a 1/16-in. pilot hole through the stock bracket at each of the two upper mounting locations.
 - c. Enlarge the pilot holes using a 9/32-in. drill bit.
 - d. Remove the block of wood.
 - e. Fasten the License Plate Frame and license plate to the stock bracket with the hardware as shown in the Service Parts Illustration. Tighten all the fasteners to 10 in-lbs (1.1 Nm).
5. On models that required removing the stock reflector:
 - a. Remove the adhesive-strip cover from the back of the replacement reflector.
 - b. Position the upper edge of the replacement reflector against the bottom edge of the License Plate Frame and press the adhesive backing firmly to the stock bracket. If the reflector does not fit below the License Plate Frame, then install the reflector on the bottom of the License Plate Frame.

NOTE

Firmly rub the replacement reflector, applying sufficient pressure to the reflector to create a strong adhesive bond to the stock bracket.

SERVICE PARTS

is08069

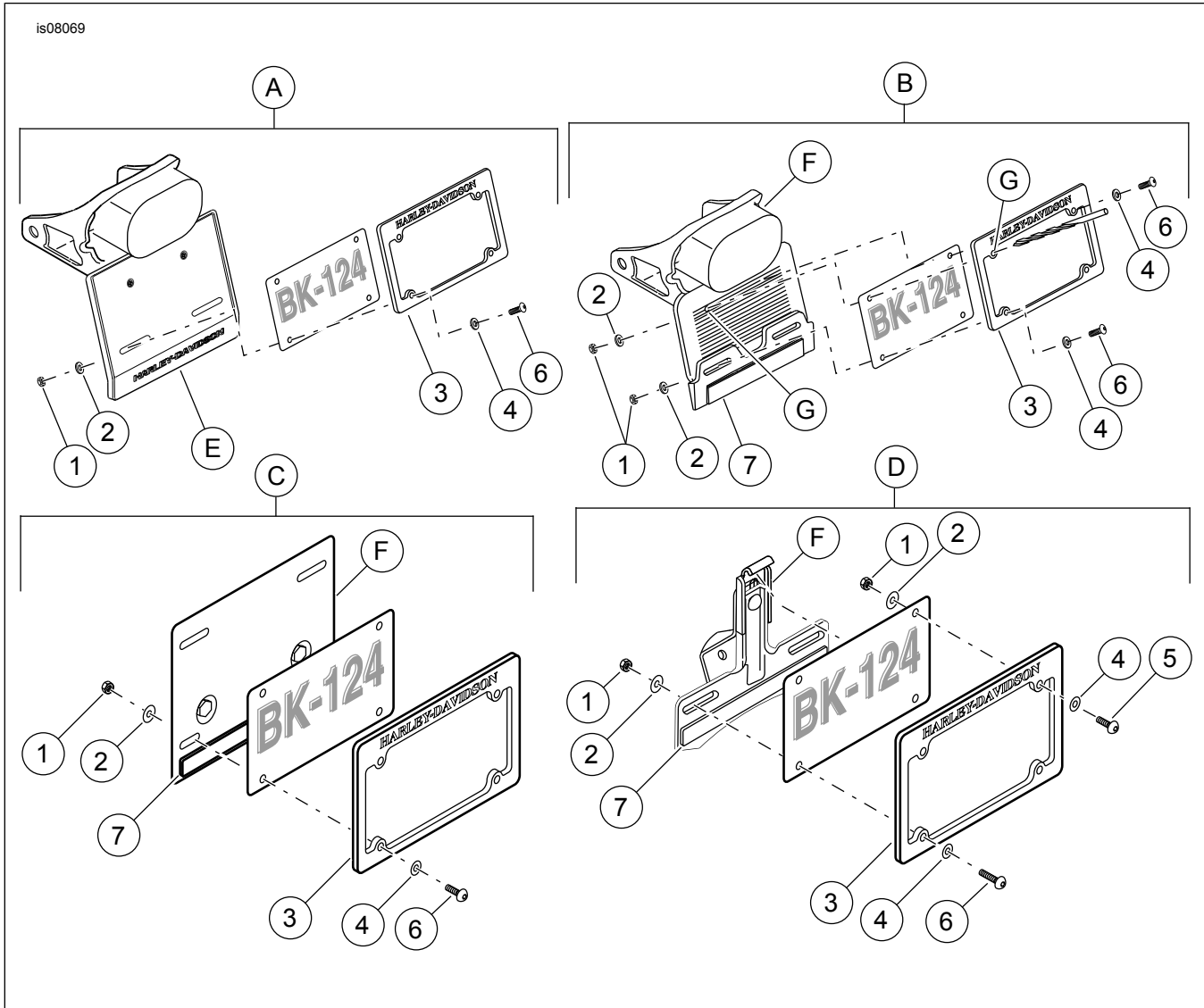


Figure 1. Service Parts: License Plate Frame Kit

Table 1. Service Parts Table

Item	Description	Part Number	Equivalent Chrome-Plated Part Number
1	Nut, Nyloc, 1/4-20 (4)	Not Sold Separately	94026-92T
2	Washer, Flat, 1/4-in. Large O.D. (4)	Not Sold Separately	94065-90T
3	Frame, License Plate	Not Sold Separately	-
4	Washer, Flat, 1/4-in. Small O.D. (4)	Not Sold Separately	-
5	Screw, 1/4-20 x 3/4-in. Button Head (2)	Not Sold Separately	94386-92T
6	Screw, 1/4-20 x 1-in. Button Head (4)	Not Sold Separately	94388-92T
7	Reflector	59988-72A	-

Items mentioned in text, but not included in kit:

A	FX Softail and FXDWG Models with License Plate Bracket Cover Kit 59720-01A
B	FX Softail and FXDWG Models
C	Standard Touring Model
D	Three-Point Plate Bracket
E	License Plate Bracket Cover Kit 59720-01A
F	Stock Bracket
G	Drill top holes.