



INSTRUCTIONS

J01333

2006-03-23



SOFTAIL TRANSMISSION-INTERFACE COVER KIT

GENERAL

Kit Number

66508-00

Models

This kit fits 2000-2006 Softail® models (except FLSTS and FLSTSC). Kit does not fit with Braided Oil Lines or Hydraulic Clutch.

Additional Parts Required

⚠ WARNING

Rider and passenger safety depend upon the correct installation of this kit. If the procedure is not within your capabilities or you do not have the correct tools, have a Harley-Davidson dealer perform the installation. Improper installation of this kit could result in death or serious injury. (00308b)

NOTE

This instruction sheet references Service Manual information. A Service Manual for your model motorcycle is required for this installation and is available from a Harley-Davidson Dealer.

NOTE

If this kit is being installed with Transmission Top-Cover Kit 66510-00, the Top-Cover Kit must be installed first. Refer to the Top-Cover Kit instruction sheet.

Kit Contents

See Figure 3 and Table 1.

INSTALLATION

Transmission-Interface Cover

⚠ WARNING

To prevent accidental vehicle start-up, which could cause death or serious injury, disconnect negative (-) battery cable before proceeding. (00048a)

⚠ WARNING

Disconnect negative (-) battery cable first. If positive (+) cable should contact ground with negative (-) cable connected, the resulting sparks can cause a battery explosion, which could result in death or serious injury. (00049a)

NOTE

This procedure explains how to install the Transmission-Interface Cover without transmission Top Cover Kit 66510-00 installed. For installation with a Transmission Top Cover, refer to the instructions in Kit Number 66510-00.

1. Disconnect the battery cables, negative cable first.

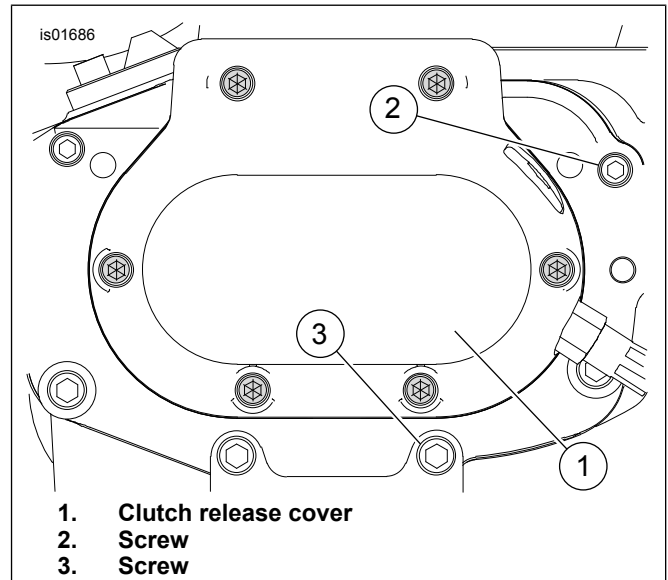


Figure 1. Mounting Bracket Fastener Location

2. See Figure 1. At the clutch release cover (1), remove and retain screw (2).
3. Loosen screw (3) approximately three turns.

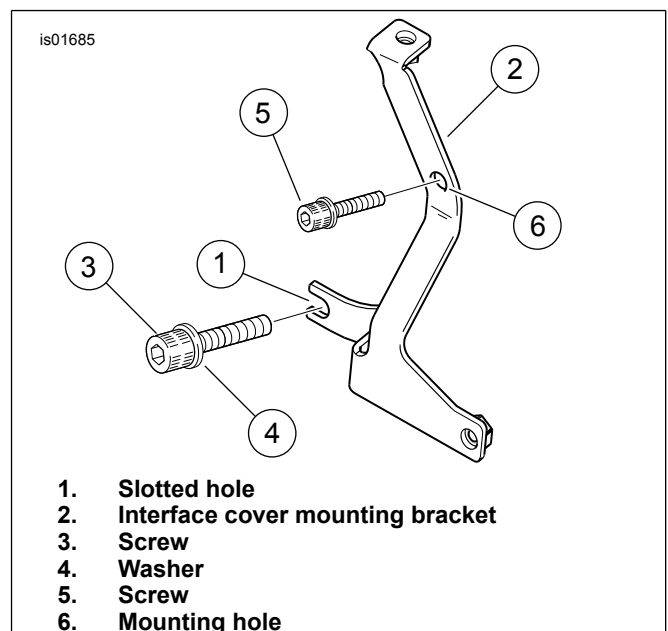


Figure 2. Mounting Bracket Installation

4. See Figure 2. Position the slotted hole (1) on the interface-cover mounting bracket (2) **behind** the screw (3) and washer (4).
5. Install the screw (5) from Step 1 through the mounting hole (6) on the bracket. Tighten to 9.5–12.2 N·m (84–108 in-lbs).
6. Tighten the screw (3) to 17.6–21.7 N·m (13–16 ft-lbs).
7. See Figure 3. Place the transmission interface cover (1) in position on the motorcycle. Spread the oil-line grommet (A) to wrap around the oil lines, then re-position the grommet in the interface cover.
8. Place the small plate (D) in position near the grommet (A). Tuck the small plate edge into the grommet. Install washers (3) and screws (2) through small plate and speed nut (4).
9. Fasten the bottom of the transmission interface cover (1) to the cover bracket (5) using a washer (3) and screw (2) as shown. Tighten the three screws (2) to 5.5–6.1 N·m (49.2–54 in-lbs).

⚠ WARNING

Connect positive (+) battery cable first. If positive (+) cable should contact ground with negative (-) cable connected, the resulting sparks can cause a battery explosion, which could result in death or serious injury. (00068a)

10. Connect the battery cables, positive cable first.

With a Transmission Top Cover

Refer to the instructions included with Softail Transmission Top-Cover Kit Number 66510-00.

SERVICE PARTS

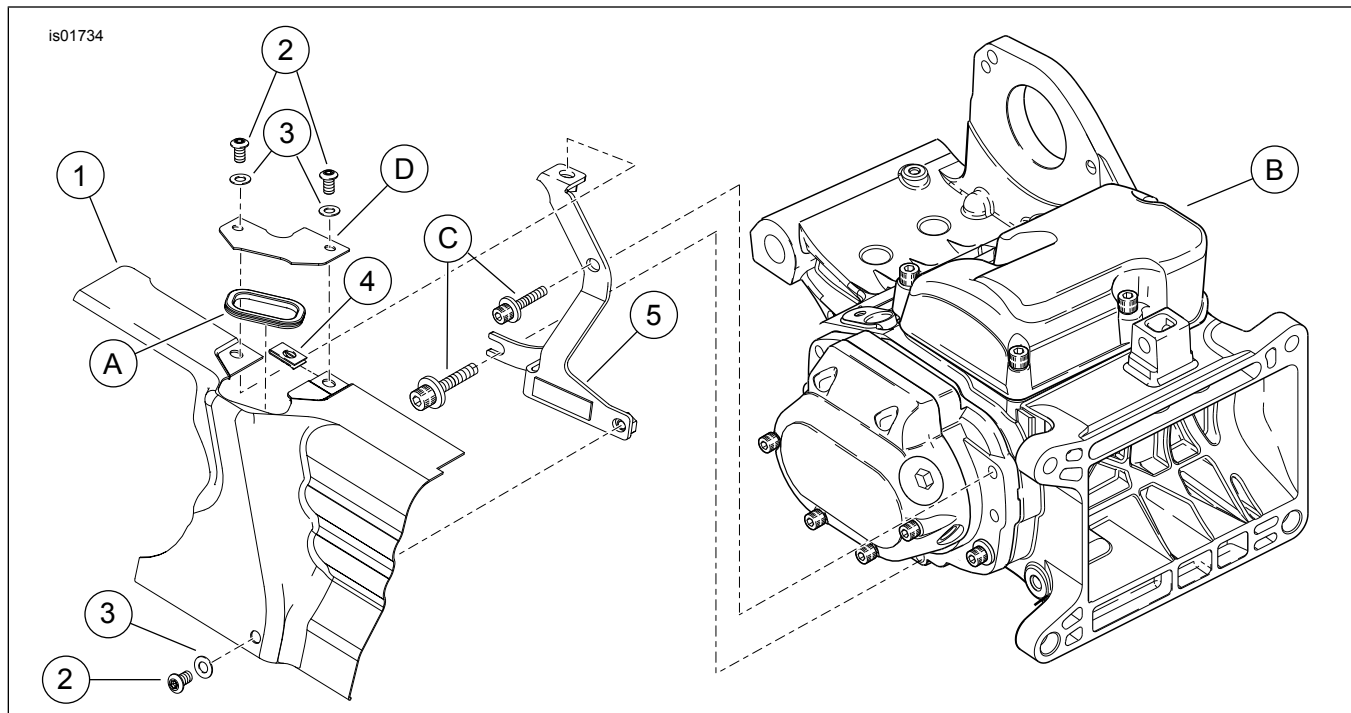


Figure 3. Service Parts: Softail Transmission -Interface Cover Kit

Table 1. Service Parts: Softail Transmission-Interface Cover Kit

Item	Description (Quantity)	Part Number	Reference items (not included with kit)
1	Transmission interface cover	Not Sold Separately	A Oil line grommet
2	Screw, chrome, 1/4-20 x 1/2 inch (3)	94407-94T	B Transmission
3	Washer, 1/2 inch flat, chrome (3)	94065-90T	C Screw and washer (stock)
4	Speed nut, 1/4-20	Not Sold Separately	D Small plate
5	Cover bracket	Not Sold Separately	