



INSTRUCTIONS

J03256

2007-11-07



PREMIUM BILLET REAR LOWERING KIT

GENERAL

Kit Number

54625-06

Models

For model fitment information, please see the P&A Retail Catalog or the Parts and Accessories section of www.harley-davidson.com (English only).

Additional Parts Required

⚠ WARNING

Rider and passenger safety depend upon the correct installation of this kit. Use the appropriate service manual procedures. If the procedure is not within your capabilities or you do not have the correct tools, have a Harley-Davidson dealer perform the installation. Improper installation of this kit could result in death or serious injury. (00333b)

NOTE

This instruction sheet references Service Manual information. A Service Manual for your model motorcycle is required for this installation and is available from a Harley-Davidson Dealer.

Kit Contents

Table 1. Kit Contents

Description (Quantity)	Part Number
Washer (4)	6447
Shock (2)	54593-03

REMOVAL

NOTE

When removing shocks, remove and replace one shock first, then the other. This method does not require raising and blocking the rear of the motorcycle. To remove both shocks at once, place the motorcycle on a center stand with the rear wheel raised off of the ground.

- Refer to the appropriate Service Manual when removing rear shock absorbers. Retain the stock fasteners for new shock installation.

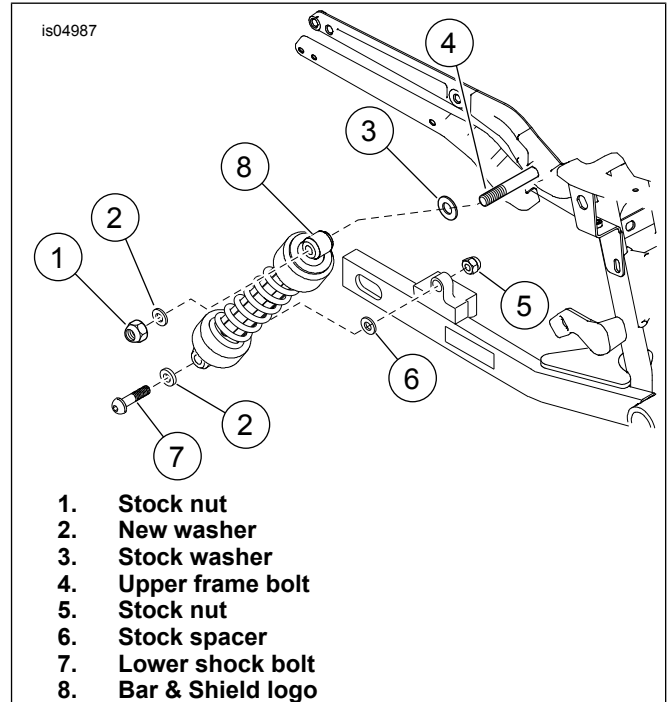


Figure 1. Rear Shock Absorber

INSTALLATION

- See Figure 1. With the Bar & Shield logo (8) positioned at the top and facing toward the rear of the motorcycle, install upper shock mount to frame as follows:
 - Use larger stock washer (3) from stock shock bolt cover and slide onto bolt (4).
 - Slide the upper shock onto the on upper frame bolt (4).
 - Obtain new washer (2) from kit and slide onto upper frame bolt.
 - Obtain stock nut (1) saved from removal and hand tighten onto upper frame bolt.
- Install lower shock mount to frame as follows:
 - See Figure 1. Obtain stock lower shock bolt (7) saved from removal. Slide new washer (2) onto bolt and insert through lower shock eyelet.
 - Obtain stock spacer (6) and slide on lower shock bolt.
 - Align and thread lower shock bolt into swingarm.
 - Secure lower shock bolt with self locking nut (5) on inboard side.

SHOCK ABSORBER ADJUSTMENT

⚠ WARNING

Adjust both shock absorbers equally. Improper adjustment can adversely affect stability and handling, which could result in death or serious injury. (00036b)

NOTE

The upper shock eye body has five adjustment index markings. Do not adjust shock preload past the 5th (lower) adjustment mark.

1. See Figure 2. Use adjustment markings (1) on upper shock eye body (2) as adjustment guide.
2. Adjust shock preload by turning the top spring cup (3) clockwise (as viewed from top of shock) to increase preload (yielding a stiffer ride) or counter-clockwise to decrease preload (yielding a softer ride).

NOTE

If a stiff suspension is desired, it may be necessary to use a rubber strap wrench to turn adjuster and increase preload on both rear shocks.

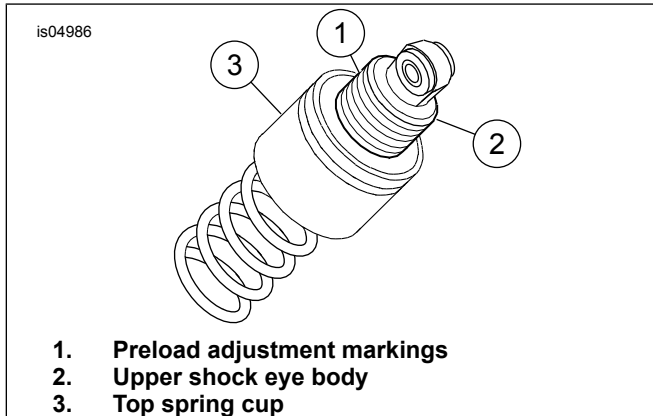


Figure 2. Rear Shock PreLoad Adjustment