



INSTRUCTIONS

J03829

2005-06-14



SADDLEBAG MOUNT KIT

GENERAL

Kit Number

79304-06

Models

This kit is used to install Saddlebag Kit 90876-05 on 2000 and later FLST and FLSTC models.

Additional Parts Required

Genuine Harley-Davidson Leather Dressing (98261-91V) can be purchased separately from any Harley-Davidson Dealer.

Kit Contents

See Figure 5 and Table 1.

INSTALLATION

1. Start with either left or right saddlebag.
2. See Figure 1. Remove locknut (1), spring washer (2), hex bolt (3), and passenger footpeg (4) from footpeg support (5). Save for later use.
3. Remove Torx® screw (6) and footpeg support (5) from frame.

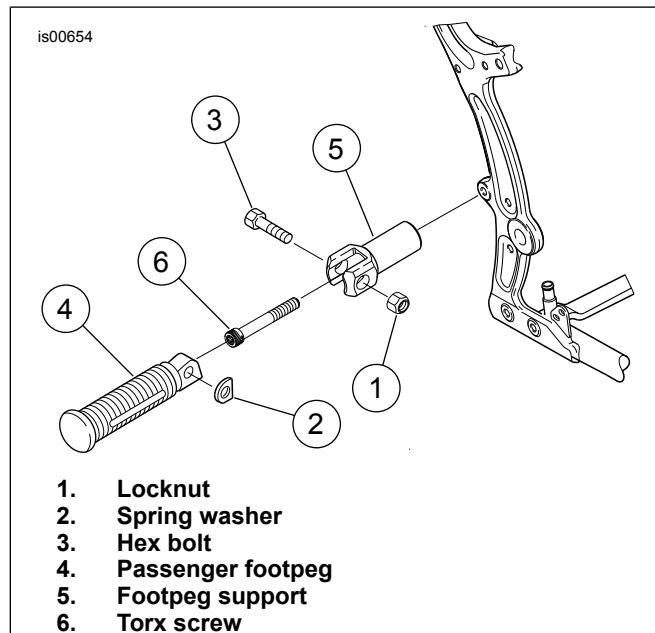


Figure 1. Remove footpeg and mounting components.

4. See Figure 2. Install rubber mount isolator (1) on saddlebag mounting bracket (2).

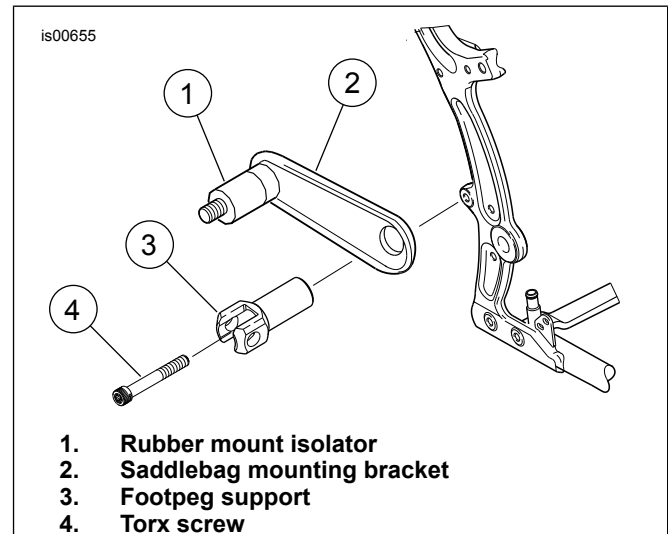


Figure 2. Install isolator and saddlebag mounting bracket.

5. Install saddlebag mounting bracket (2) on frame with footpeg support (3) and Torx® screw (4) previously removed. Position saddlebag mounting bracket so it is horizontal to ground. Do not tighten Torx® screw until saddlebag is installed.
6. See Figure 3. Remove and discard original equipment screws (1) from fender support.
7. Install studs (2) on fender support (3), with the shorter threaded end first. Tighten studs to 21-27 ft-lbs (28.4-36.6 Nm).

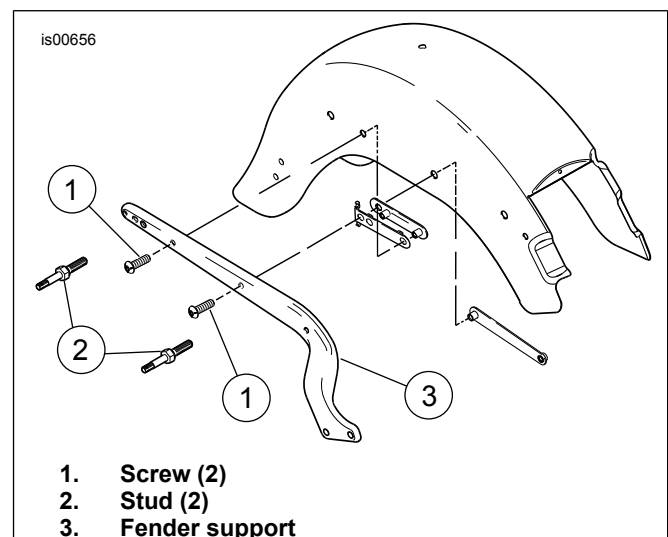


Figure 3. Replace original equipment screws with studs.



8. See Figure 4. Open saddlebag and position saddlebag over mounting studs, and position bracket over rubber mount isolator.

NOTE

Footpeg must be installed in the bracket with the rounded side of the mounting inboard. When footpegs are properly installed, footpegs will fold upward at a 45° angle toward the rear of the motorcycle.

▲ WARNING

Footrests must fold up and toward rear of motorcycle if struck. Failure to set footrests to fold up and back could result in death or serious injury. (00366a)

9. Tighten Torx® screw previously installed in Step 5 to 35-45 ft-lbs (47-61 Nm).

NOTE

Maximum saddlebag weight is 15 pounds (6.8 Kg) for each bag.

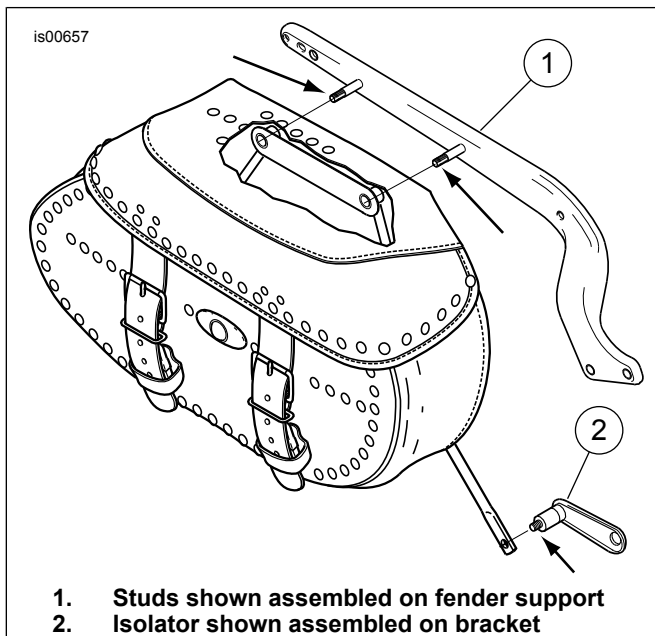


Figure 4. Position saddlebag over studs, and position bracket over isolator.

▲ WARNING

Do not exceed saddlebag weight capacity. Put equal weight in each bag. Too much weight in saddlebags can cause loss of control, which could result in death or serious injury. (00383a)

10. See Figure 5. Install saddlebag (1) on mounting studs (2) with flange locking nuts (3) and washers (4). Tighten flange nuts to 120-144 in-lbs (13.6-16.3 Nm).
11. Install acorn nut (5) and washer (6) on rubber mount isolator (7) and saddlebag mounting bracket (8). Tighten acorn nut to 120-144 in-lbs (13.6-16.3 Nm).
12. Install passenger footpeg (A) on footpeg support (B) using hex bolt (C), spring washer (D), and locknut (E). Tighten locknut to 120-192 in-lbs (13.6-21.7 Nm).

▲ WARNING

Federal Motor Vehicle Safety Standard (FMVSS) 108 requires motorcycles to be equipped with rear and side reflectors. Be sure rear and side reflectors are properly mounted. Poor visibility of rider to other motorists can result in death or serious injury. (00336b)

NOTE

The reflectors should be installed on the outboard side of the saddlebag, centered between the leather straps. The reflectors are side specific. Obtain the correct reflector from the kit.

13. Test mount the reflector (9) prior to removing the adhesive backing.
14. Remove the adhesive from the back of the reflector.

NOTE

The ideal temperature should be at least 60° F (16° C) for proper adhesion of the reflector on the saddlebag.

15. Install reflector (9) on saddlebag and press firmly into place for 10 to 15 seconds. Allow the adhesive to cure for about 12 hours at no less than 60° F (16° C).
16. Repeat steps for saddlebag on opposite side.

SERVICE PARTS

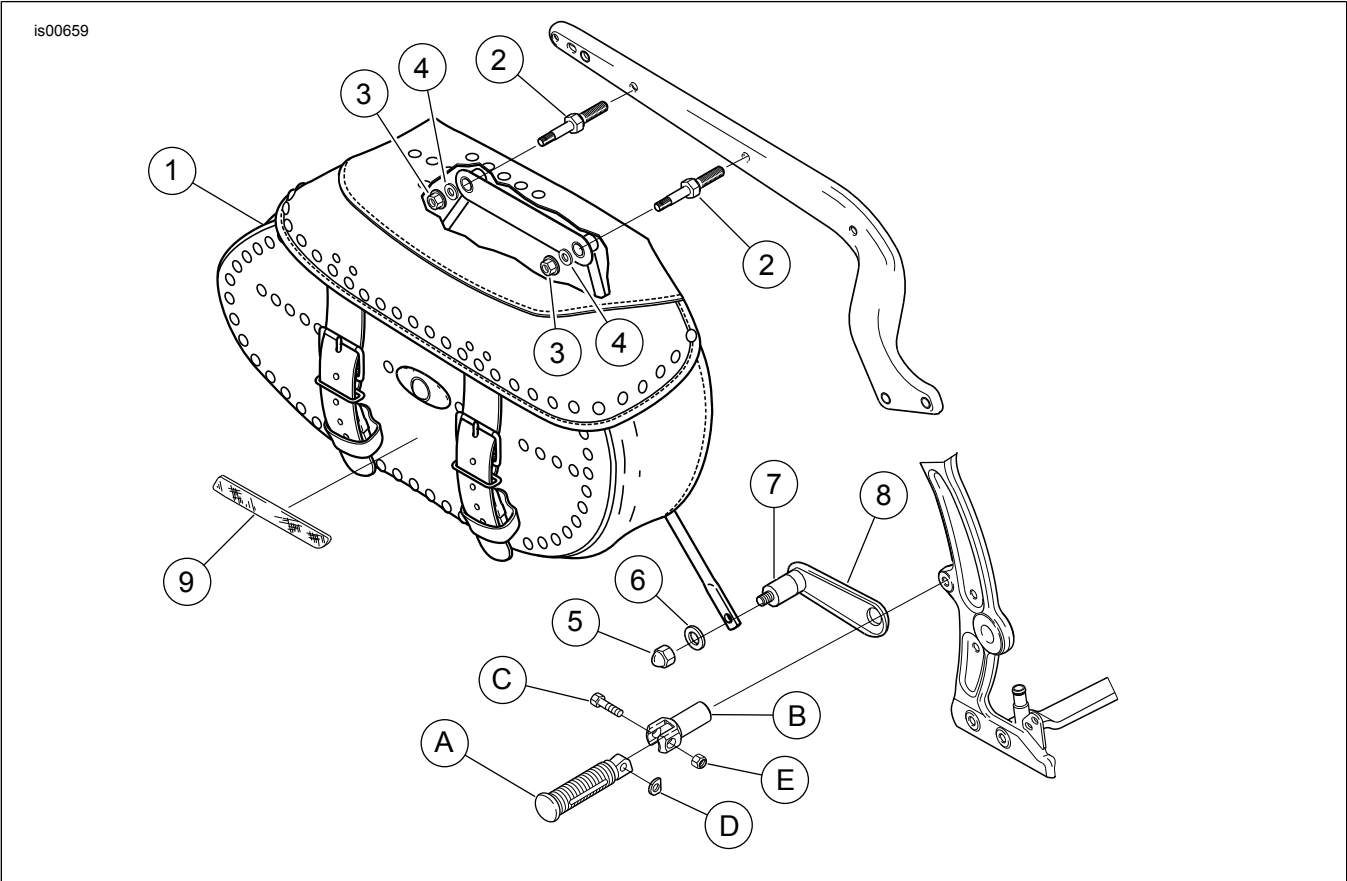


Figure 5. Service Parts: Saddlebag Mount Kit

Table 1. Service Parts: Saddlebag Mount Kit

Item	Description (Quantity)	Part Number
1	Saddlebag from kit 90876-05	
2	Mounting stud (4)	90367-03
3	Flange locking nut (4)	7531
4	Washer (4)	6229W
5	Acorn nut (2)	7507
6	Washer (2)	6702
7	Rubber mount isolator (2)	90524-01
8	Saddlebag mounting bracket (2)	90346-00
9	Reflector, red, right	59287-92
9	Reflector, red, left	59288-92
Items mentioned in text, but not included in kit:		
A	Passenger footpeg	
B	Footpeg support and Torx screw	
C	Hex bolt	
D	Spring washer	
E	Locknut	