



# INSTRUCTIONS

J02371

2013-06-25



## BULLET-STYLE TURN SIGNAL RETROFIT KIT

### GENERAL

For model fitment information, see the P&A retail catalog or the Parts and Accessories section of [www.harley-davidson.com](http://www.harley-davidson.com) (English only).

Table 1. Service Parts

Lens/Bulb Type	For:	Part N0.
Amber Lens, Clear Bulb	Domestic	69063-03A
Clear Lens, Amber Bulb	Domestic	69147-03A
Smoked Lens, Amber Bulb	Domestic	69153-03A
Amber Lens, Clear Bulb	HDI	69337-03
Clear Lens, Amber Bulb	HDI	69338-03
Smoked Lens, Amber Bulb	HDI	69339-03

### Installation Requirements

When installing Amber Lens Turn Signal Retrofit Kit 69063-03A on a vehicle that also has an Auxiliary Brake Light/Turn Signal Kit (Part number 91699-99A) installed, Red Bullet Turn Signal Trim Ring Kit (Part Number 69736-02) must be installed in place of the Amber rear lenses. This kit is available separately from your Harley-Davidson dealer.

The other Bullet-Style Turn Signal retrofit kits **are not** compatible with the Auxiliary Brake Light/Turn Signal Kit.

See the Service Parts Illustration on the last page of these instructions for kit contents.

#### NOTE

*This instruction sheet references service manual information. A service manual for your model motorcycle is required for this installation and is available from your Harley-Davidson Dealer.*

#### ⚠ WARNING

Rider and passenger safety depend upon the correct installation of this kit. Use the appropriate service manual procedures. If the procedure is not within your capabilities or you do not have the correct tools, have a Harley-Davidson dealer perform the installation. Improper installation of this kit could result in death or serious injury. (00333b)

### Kit Contents

See Figure 2 and Table 2.

### INSTALLATION

#### ⚠ WARNING

To prevent accidental vehicle start-up, which could cause death or serious injury, remove main fuse before proceeding. (00251b)

1. See service manual. Remove seat.

2. **For Touring models:** Refer to TURN SIGNAL LAMPS: FRONT TURN SIGNAL LAMP: REMOVAL in the appropriate service manual to access the AMP MULTILOCK front turn signal connector and disassemble the turn signals from the vehicle. **For Softail models:** Refer to TURN SIGNALS/ RUNNING LIGHTS: LAMP REPLACEMENT in the appropriate service manual to access the AMP MULTILOCK front turn signal connector [31] and disassemble the turn signals from the vehicle. **For all models:** Save all lamp mounting hardware.
3. Note the location of all tie straps, so the new wiring can be attached in the same locations.
4. Disconnect front turn signal connectors.

#### NOTE

*Record the color of each wire, its origin (left or right lamp) and which cavity it was in before removing the terminals from the socket (lamp-side) half of the connector.*

5. See Figure 1. Remove the wires and terminals from the socket housing [31B]. Attach a length of strong, flexible mechanic's wire to **each** terminal.

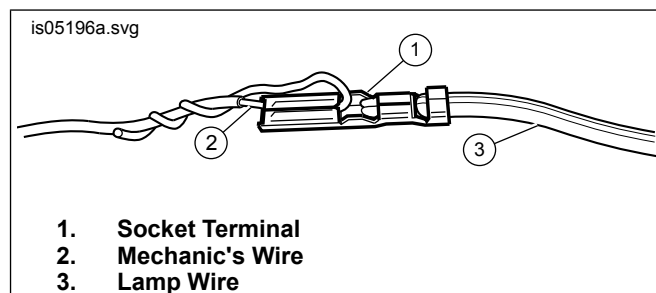


Figure 1. Mechanic's Wire

#### NOTE

*Use of the mechanic's wires will aid in the installation of the new turn signal lamps. Some tips:*

- The mechanic's wire should be strong enough to pull the terminals and lamp wires through the conduit without breaking.
- The wires should be long enough to verify that the free ends are not lost in the conduit.
- See Figure 1. Feed each mechanic's wire through the opening in a socket terminal, then loop back twisting the end until tightly wound around the longer strand.
- Pull the lamp wires from one lamp at a time through the conduit.
- Once the lamp wires and attached terminals are free of the conduit unfasten the mechanic's wires from the terminals before discarding the lamps.

- Pull the lamp wires and terminals, along with the mechanic's wires, through the conduit to free the original lamps from the motorcycle. Leave the mechanic's wires in the conduit. Discard the lamps.

## INSTALLING NEW FRONT TURN SIGNAL LAMPS

1. Attach a mechanic's wire to each terminal on the new bullet-style front turn signal lamps.
2. Pull the mechanic's wires, along with the terminals and lamp wires from one lamp at a time back through the conduit. Mark the wires to identify their origin (left or right lamp) after they have been pulled all the way through the conduit.

### NOTE

*If it becomes too difficult to insert the new lamp wires through the conduit, the wires can be routed alongside the conduit, then bound securely with tie straps from the kit.*

3. Obtain the new socket housing from the kit. Insert each terminal from the new lamps into the numbered cavity of the new connector to match the original lamp connections.
4. Connect the new socket housing to the front turn signal connector pin housing.
5. Attach the wiring to the motorcycle with tie straps from the kit.
6. **Removing the original rear turn signal lamps:**
7. **For Touring models: Refer to REAR TURN SIGNAL LAMPS: REMOVAL** in the appropriate service manual to disconnect the left and right rear turn signal connectors, and disassemble the turn signals from the vehicle.
8. **For Softail Models: Refer to TURN SIGNALS/RUNNING LIGHTS: LAMP REPLACEMENT** in the appropriate service manual to disconnect the left [18] and right [19] turn signals from the vehicle.
9. **For all models:** Save all lamp mounting hardware.

10. Note the location of any tie straps, so the new wiring can be attached in the same locations.

### 11. Installing the New Rear Turn Signal Lamps:

12. **For Touring models:** Refer to TURN SIGNAL LAMPS: REAR TURN SIGNAL LAMP: INSTALLATION in the appropriate service manual to assemble the new turn signal connectors. **For Softail models:** Refer to TURN SIGNALS/RUNNING LIGHTS: LAMP REPLACEMENT IN THE APPROPRIATE service manual to assemble the new turn signals to the vehicle, and reconnect the rear turn signal connectors.

13. Attach the wiring to the motorcycle with tie straps from the kit, if originally installed.

### ⚠ WARNING

**Connect positive (+) battery cable first. If positive (+) cable should contact ground with negative (-) cable connected, the resulting sparks can cause a battery explosion, which could result in death or serious injury. (00068a)**

14. Connect the battery cables, positive cable first.

15. Refer to the service manual and follow instructions to install the seat.

### ⚠ WARNING

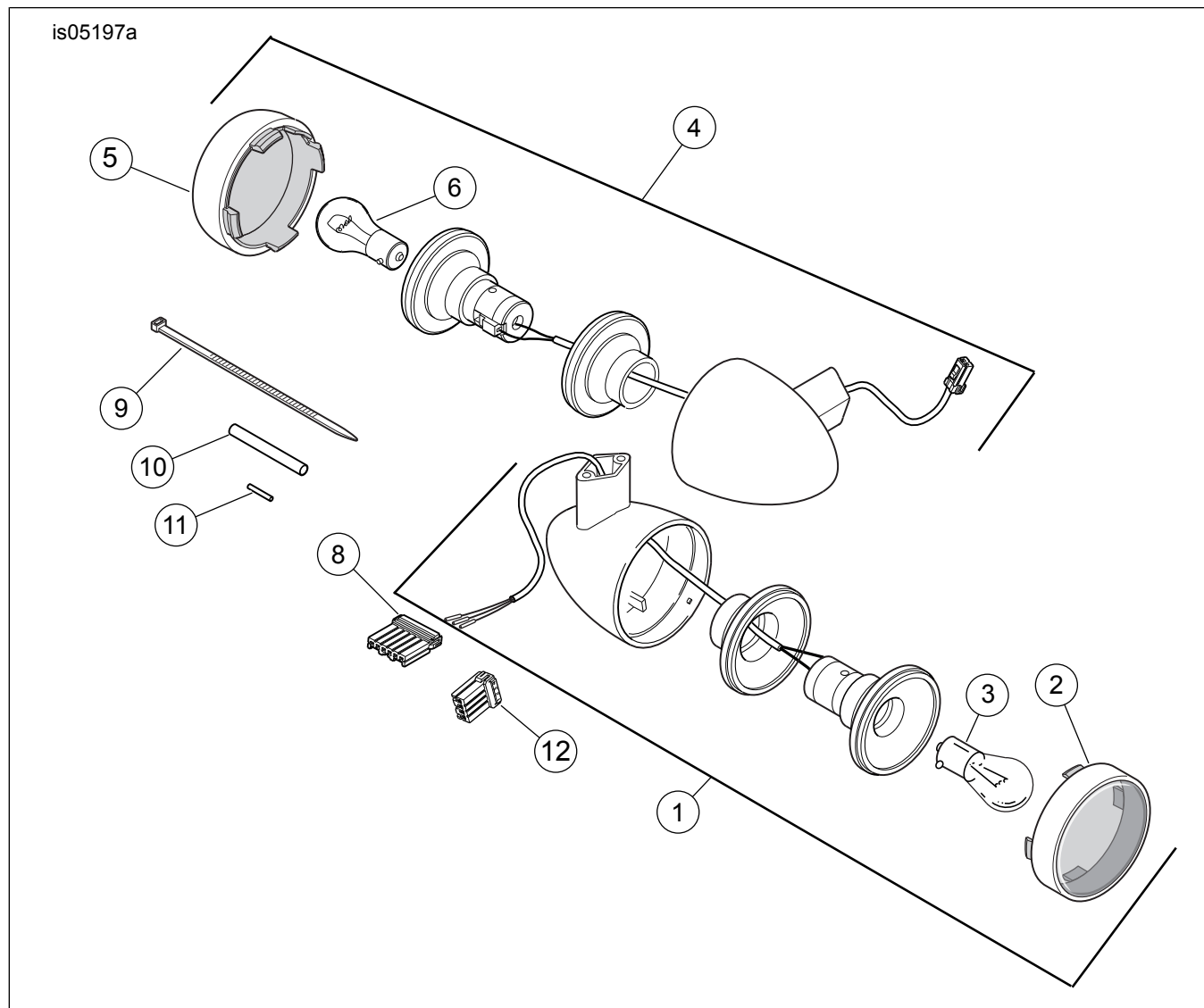
**After installing seat, pull upward on seat to be sure it is locked in position. While riding, a loose seat can shift causing loss of control, which could result in death or serious injury. (00070b)**

### ⚠ WARNING

**Be sure that all lights and switches operate properly before operating motorcycle. Low visibility of rider can result in death or serious injury. (00316a)**

16. Start the motorcycle and make sure that all four turn signals function properly.

## SERVICE PARTS



**Figure 2. Service Parts: Bullet Style Touring Turn Signal Kit**

**Table 2. Service Parts Table**

Kit	Item	Description (Quantity)	Part Number
Turn Signal Kit 69063-03A (T/S Assembly, Amber) Note for kit 69063-03A: When Auxilliary Brake Light/Turn Signal Kit (Part Number 91699-99A) is also installed, the Amber rear turn signal lenses MUST be replaced with Red Bullet Turn Signal Trim Ring Kit (Part Number 69736-02).	1	Turn signal assembly, front (2)	69165-03
	2	Lens assembly, Amber	69002-03
	3	Bulb (Clear), S-8, dual contact, bayonet base	69168-89
	4	Turn signal assembly, rear (2)	69168-03
	5	Lens assembly, Amber	69002-03
	6	Bulb (Clear), S-8 single contact bayonet base	68572-64B
Turn Signal Kit 69147-03A (Clear lens, Domestic)	1	Turn signal assembly, front (2)	69201-03
	2	Lens assembly, clear	69004-03
	3	Bulb (Amber), S-8 dual contact, bayonet base	69331-02
	4	Turn signal assembly, rear (2)	69202-03
	5	Lens assembly, clear	69004-03
	6	Bulb (Amber), S-8, single contact, bayonet base	69330-02

**Table 2. Service Parts Table**

<b>Kit</b>	<b>Item</b>	<b>Description (Quantity)</b>	<b>Part Number</b>
Turn Signal Kit 69153-03A (T/S W/Trim Ring, Clear)	1	Turn signal assembly, front (2)	69203-03
	2	Lens assembly, Smoked	69021-03
	3	Bulb (Amber), S-8 dual contact, bayonet base	69331-02
	4	Turn signal assembly, rear (2)	69204-03
	5	Lens assembly, Smoked	69021-03
	6	Bulb (Amber), S-8, single contact, bayonet base	69330-02
Turn Signal Kit 69337-03A (Amber Lens, HDI)	1	Turn signal assembly, front (2)	69340-03
	2	Lens assembly, Amber	69002-03
	3	Bulb (Clear), S-8 (E-approved) single contact, bayonet base	68163-84
	4	Turn signal assembly, rear (2)	69341-03
	5	Lens assembly, Amber	69002-03
	6	Bulb (Clear), S-8, single contact, bayonet base	68163-84
Turn Signal Kit 69338-03 (Clear Lens, HDI)	1	Turn signal assembly, front (2)	69342-03
	2	Lens assembly, clear	69004-03
	3	Bulb (amber), S-8 (E-approved)single contact, bayonet base	69348-03
	4	Turn signal assembly, rear (2)	69343-03
	5	Lens assembly, clear	69004-03
	6	Bulb (amber), S-8, single contact, bayonet base	69348-03
Turn Signal Kit 69339-03 (Smoked Lens, HDI)	1	Turn signal assembly, front (2)	69334-03
	2	Lens assembly, smoked	69021-03
	3	Bulb (amber), S-8 (E-approved)single contact, bayonet base	69348-03
	4	Turn signal assembly, rear (2)	69345-03
	5	Lens assembly, smoked	69021-03
	6	Bulb (amber), S-8, single contact, bayonet base	69348-03
Common Parts for All Kits.	7	Turn signal wiring kit	69207-03
	8	Housing, socket (6-way)	73156-96BK
	9	Strap, cable (8)	10065
	10	Tube, heat shrink (10)	67113-83
	11	Connector (10)	70581-73
	12	Housing 4-way socket	73154-96BK