



INSTRUCTIONS

J03696

2005-04-19



WIDEGlide GAUGE BRACKET KIT

GENERAL

Kit Number

69439-06, 69440-06, 69441-06, 69487-06, 67268-06

Models

These kits fit 2006 and later FXDWG model motorcycles.

Additional Parts Required

For complete installation, this kit requires a gauge kit and housing kit. See Table 1 for a list of gauge kits and housing kits.

⚠ WARNING

Rider and passenger safety depend upon the correct installation of this kit. Use the appropriate service manual procedures. If the procedure is not within your capabilities or you do not have the correct tools, have a Harley-Davidson dealer perform the installation. Improper installation of this kit could result in death or serious injury. (00333b)

NOTE

This instruction sheet references Service Manual information. A Service Manual for your model motorcycle is required for this installation and is available from a Harley-Davidson Dealer.

NOTICE

It is possible to overload the vehicle's charging system by adding too many electrical accessories. If the combined electrical accessories operating at any one time consume more electrical current than the vehicle's charging system can produce, the electrical consumption can discharge the battery and cause damage to the vehicle's electrical system. (00211d)

Kit Contents

See Figure 2 and Table 2.

INSTALLATION

Prepare the Motorcycle

1. Refer to the appropriate Service Manual and remove the seat.

⚠ WARNING

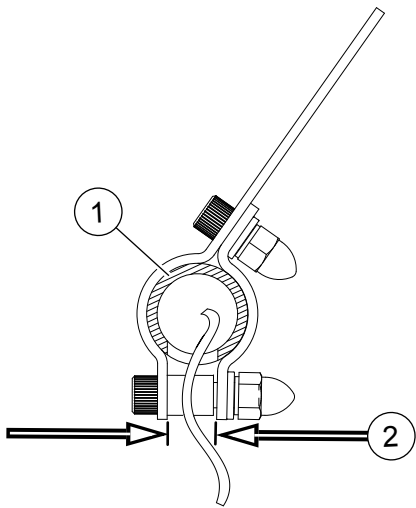
To prevent accidental vehicle start-up, which could cause death or serious injury, disconnect negative (-) battery cable before proceeding. (00048a)

2. Disconnect the negative (-) battery cable.
3. Follow the instructions in the Service Manual and in the gauge kit instruction sheet to remove the fuel tank.

Table 1. Gauge and Housing Kits

Bracket Kit		Gauge Kit		Housing Kit	
Description	Kit	Description	Kit	Description	Kit
1.5 in. Single Gauge Bracket	69439-06	1.5 in. Voltmeter Gauge Kit	74507-04	1.5 in. Cylindrical Housing	75268-04
1.5 in. Double Gauge Bracket	69440-06	1.5 in. Oil Press. Gauge Kit	74509-04	1.5 in. Spherical Housing	75263-04
1.5 in. Triple Gauge Bracket	69441-06	1.5 in. Oil Temp. Gauge Kit	74513-04		
2 in. Gauge Bracket Kit	69487-06	2 in. Compass (black face)	74445-05	2 in. Compass Housing	68206-05
		2 in. Compass (silver face)	74446-05		
		2 in. Compass (metal face)	74498-05	2 in. Tachometer Housing	74658-05
		2 in. Tachometer Kit	67564-05		
Mini-Tach Bracket Kit	67268-06	Black Face Mini-Tach	68953-04	Mini-Tach Tapered Housing	67524-04
		Silver Face Mini-Tach	68968-04		
		Nostalgic Face Mini-Tach	68031-05	Mini-Tach Cylindrical Housing	67523-04
		Metal Face Mini-Tach	67201-04A		





1. Internally wired handlebar
2. Tach mount to clamp plate gap

Figure 1. Tach Mount to Clamp Plate Gap

Wire the Gauge

1. Follow the instructions in the Service Manual and the gauge instruction sheet to splice the gauge harness wires to the main wire harness and to wire the fuse block.
2. Follow the instructions in the Service Manual and the gauge instruction sheet to route the gauge harness.

Install Dyna Gauge Bracket Kit

NOTE

See Figure 2 for the following steps.

1. Between the handlebar risers, clamp the handlebar between the clamp bracket (2) and the gauge mount bracket (1).
2. Insert screw (3) into the upper mounting holes and loosely install lockwasher (6) and acorn nut (7).
3. Install spacer (5) between the lower mounting holes of the brackets, then secure the assembly with screw (4), lockwasher (6) and acorn nut (7).

NOTE

The gap between the gauge mount bracket and the clamp bracket should be larger on the bottom to allow for internally routed wires.

4. See Figure 1. Position the mount so that the gap (2) straddles the opening in the handlebar (1) where the wires exit and tighten screws to 39 N·m (29 ft-lbs).
5. Verify wires are not pinched between clamp and handlebar exit hole. If necessary, rotate bracket assembly to allow free movement of the exiting wires.

Install Gauge into Bracket

1. Follow the gauge instruction sheet to install the gauge in the bracket.
2. Follow the gauge instruction sheet to attach the colored wire terminals to the posts on the back of the gauge.

3. Follow the gauge housing kit instruction sheet to attach the gauge housing.

Return Motorcycle to Service

1. Follow the instructions in the Service Manual and in the gauge instruction sheet to secure the wiring and install the fuel tank.
2. Obtain the 2 amp fuse from the gauge kit and install into the fuse block.
3. Replace the fuse block cover.
4. Connect the negative (-) battery cable.

▲ WARNING

After installing seat, pull upward on seat to be sure it is locked in position. While riding, a loose seat can shift causing loss of control, which could result in death or serious injury. (00070b)

5. Install the seat.
6. Follow the gauge instruction sheet to test the operation of the gauge.

SERVICE PARTS

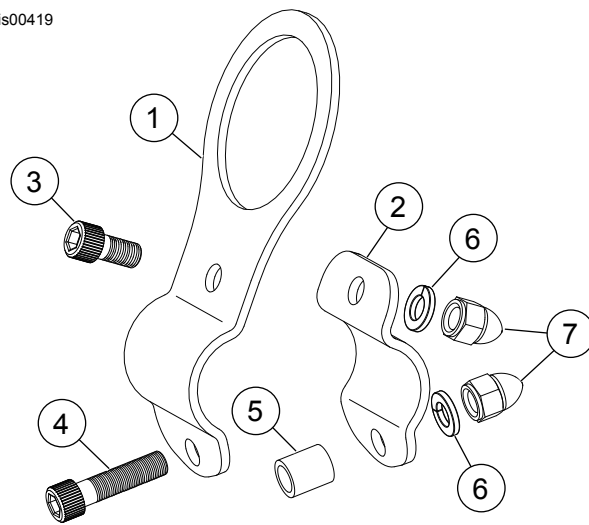


Figure 2. Service Parts for Wide Glide Gauge Bracket (Single Gauge Bracket Shown)

Table 2. Service Parts

Item	Description (Quantity)	Part Number
1	Gauge bracket	Not Sold Separately
2	Clamp bracket	67570-06
3	Screw, socket head, 5/16 X 5/8 in.	94345-92T
4	Screw, socket head, 5/16 X 1-1/4 in.	94349-92T
5	Spacer	76159-03
6	Washer, lock (2)	7041
7	Nut, acorn (2)	7736