



INSTRUCTIONS

J02425

2011-03-01



FLSTC & FLSTS DOCKING HARDWARE WITH SADDLEBAG SUPPORTS

GENERAL

Kit Number

53931-03A

Models

For model fitment information, see the P&A Retail Catalog or the Parts and Accessories section of www.harley-davidson.com (English only).

Kit Contents

See Figure 15 and Table 3.

NOTE

Some applications require a turn signal relocation kit be installed prior to the installation of this docking kit. See the chart below to find these requirements for your vehicle and the detachable accessory you will be installing. These kits must be purchased separately from any Harley-Davidson dealer.

Table 1. Turn Signal Relocation Kit Requirement

2003 and later FLSTS	Accessory Part Number	Turn Signal Relocation Kit Required
Detachable Sideplates	53815-00	53933-03
Detachable Tour Pak Rack	53066-00A	53933-03
Detachable Passenger Hand-rail	53736-97	Not required
Detachable Solo Rack	53903-00	90366-03

NOTE

The rear docking points in kit part number **90366-03** provide the rear mounting points for the Solo Rack. The rear mounting points from **this kit (53931-03A)** will need to be installed to provide the clearance for the Solo Rack to be mounted.

Table 2. Turn Signal Relocation Kit Requirement

2003 and later FLSTC	Accessory Part Number	Turn Signal Relocation Kit Required
Detachable Sideplates	53815-00	Not required
Detachable Tour Pak Rack	53066-00A	Not required

REMOVAL

FLSTS Saddlebag Assembly Removal

- See Figure 15. Remove a saddlebag by removing the acorn nut and washer on the lower support and the two flange locknuts inside the bag. Discard the flange locknuts but retain the acorn nut and washer.

- See Figure 1. Remove the saddlebag support studs and their mounting hardware.
- Repeat steps 1 - 2 on the other side of the vehicle.

FLSTC Saddlebag and Fixed Mount Sissybar Removal

- See Figure 15. Remove a saddlebag by removing the acorn nut and washer on the lower support and the two flange locknuts inside the bag. Discard the flange locknuts, but retain the acorn nut and washer.
- See Figure 1. Remove the saddlebag support studs and their mounting hardware.
- Remove and discard fixed mount sideplates. Retain sissy bar for use with detachable sideplates.
- Repeat steps 1 - 3 on the other side of the vehicle.

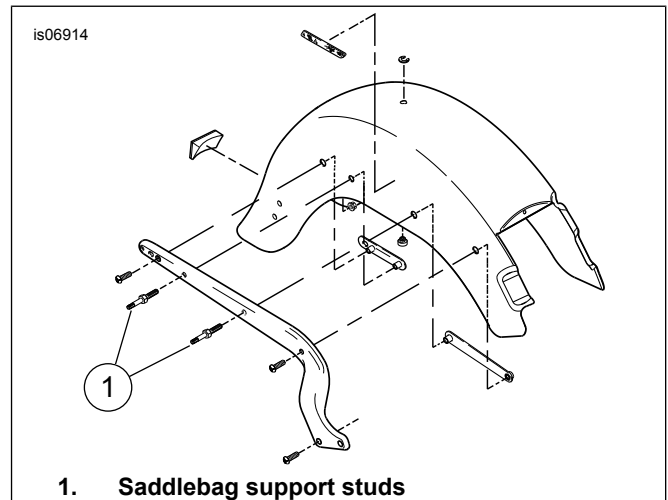


Figure 1. Original Equipment Hardware (FLSTS model shown)

INSTALLATION

Docking Hardware Installation - For Detachable Sideplates or Tour-Pak Rack

NOTE

See Figure 15. The rear docking point (8) is wider than the front docking point (2).

- Place front docking point (2) on front stud (1), with countersunk end of docking point facing fender support.

2. Place spacer (6) for side plates or mid docking point (for detachable sideplate kit) on rear stud (1).
3. Place rear docking point (8) on bolt (7), with countersunk end facing fender support.
4. Insert front stud (1) through front docking point (2), fender support and into bracket underneath fender as shown.
5. Insert rear stud (1) through fender support and into bracket underneath fender as shown.
6. Install bolt (7) through fender support and into bracket underneath fender as shown.
7. Tighten front and rear studs (1) and bolt (7) to 37 N·m (27 ft-lbs).
8. Repeat steps 1-7 on the other side of the vehicle.

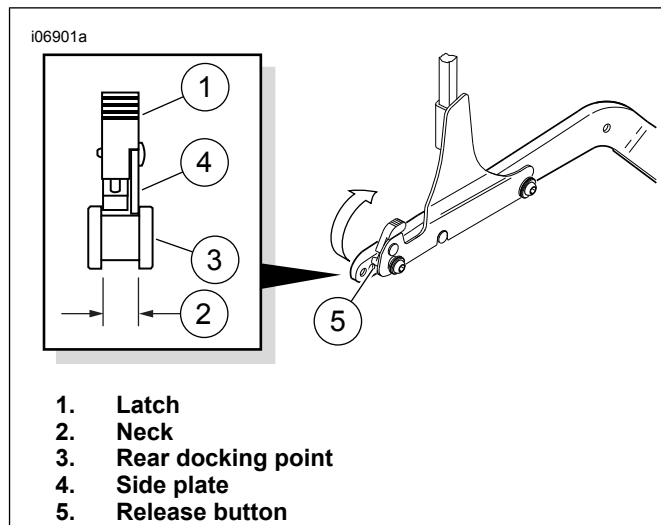


Figure 4. Close rotary latches by pushing latch fully forward.

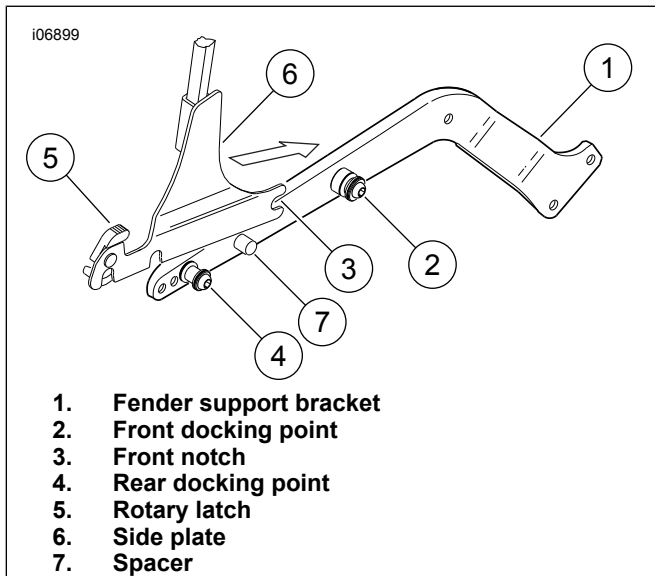


Figure 2. Place sideplate front notches into front docking points.

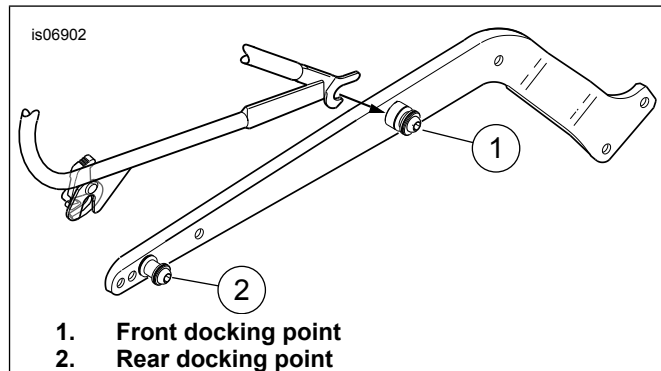


Figure 5. Place front notches into front docking points.

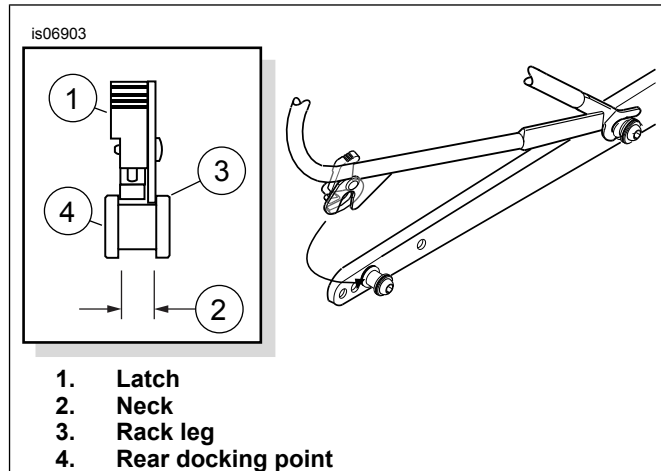


Figure 6. Pull back rotary latches and lower rack onto rear docking points.

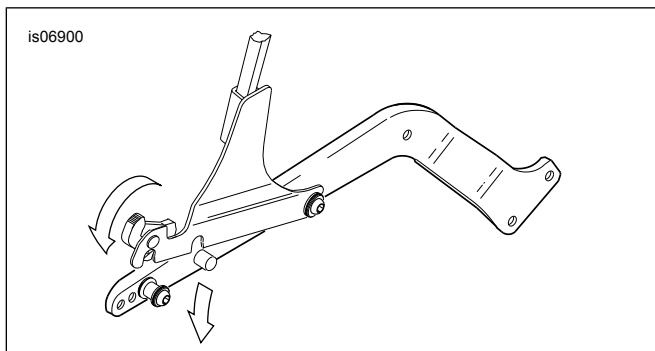


Figure 3. Pull back rotary latches and lower side plate onto rear docking points.

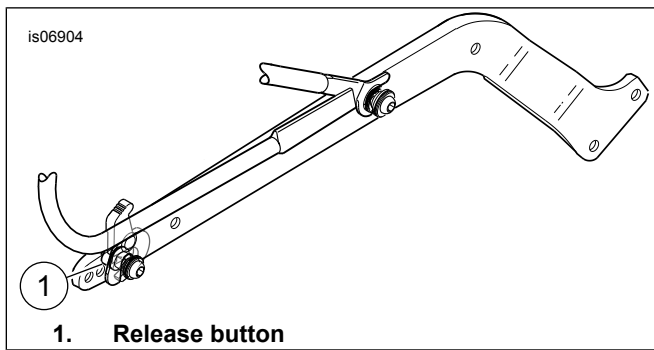


Figure 7. Close rotary latches by pushing latch fully forward.

Docking Hardware Installation - For Detachable Solo Rack Kit

1. See Figure 15. While standing behind motorcycle, push front rack notches down into front docking points (2) as shown in Figure 8.
2. See Figure 9. Pull rotary latches back into rearmost position as shown. Position rear rotary latches overturn signal docking points, making certain latches and sideplates fit into the neck of the turn signal docking points as shown in the rear view. This may require some gentle squeezing or spreading of the sideplates. Middle notch in rack sideplate will rest over mid docking points as shown.
3. See Figure 10. Push downward and close the rotary latches by pressing the latch lever as far forward as it will go as shown. You will hear a click when the latch is in place. **If the latch does not easily close, do not force.** Recheck alignment as described in Step 2.
4. To remove the rack, press the release button shown in Figure 10, and pull the rotary latch lever back. Carefully lift the rear of the rack up and pull the rack out of the front docking points.

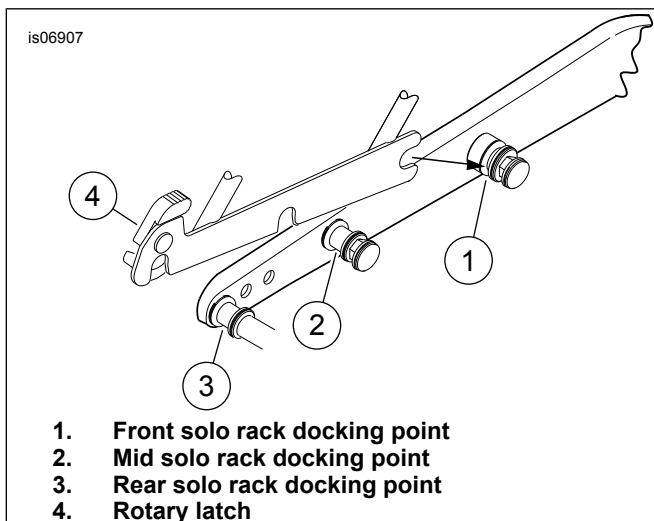


Figure 8. Push front notches down into front docking points on fender support.

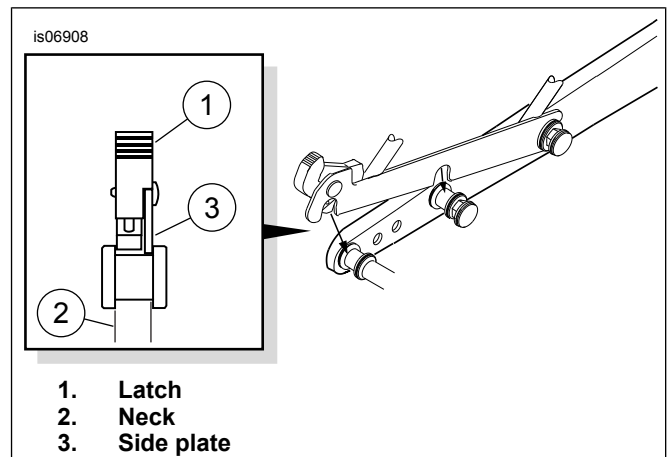


Figure 9. Pull back rotary latches and lower rack onto turn signal and rear docking points.

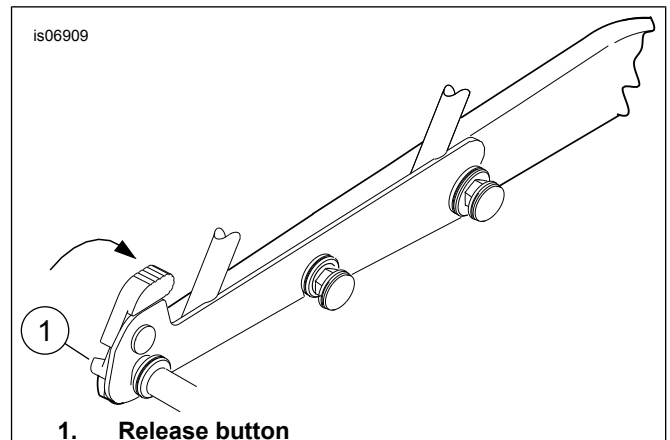


Figure 10. Close rotary latches by pushing latch fully forward.

Docking Hardware Installation - For Detachable Passenger Handrail Kit

1. See Figure 11. While standing behind the motorcycle, push the front notches of the passenger handrail down into the front docking points as shown.
2. Pull the rotary latches back into their rearmost position as shown in Figure 12. Position the rear rotary latches over the rear docking points, making certain the latches and sideplates fit into the neck of the turn signal docking points as shown in the rear view. This may require some gentle squeezing or spreading of the sideplates.
3. Push downward and close the rotary latches by pressing the latch lever as far forward as it will go as shown Figure 13. You will hear a click when the latch is in place. **If the latch does not easily close, do not force.** Recheck alignment as described in Step 2.
4. To remove the handrail, press the release button shown in the diagram, and pull the rotary latch lever back. Carefully lift the rear of the passenger handrail up and pull the handrail out of the front docking points.

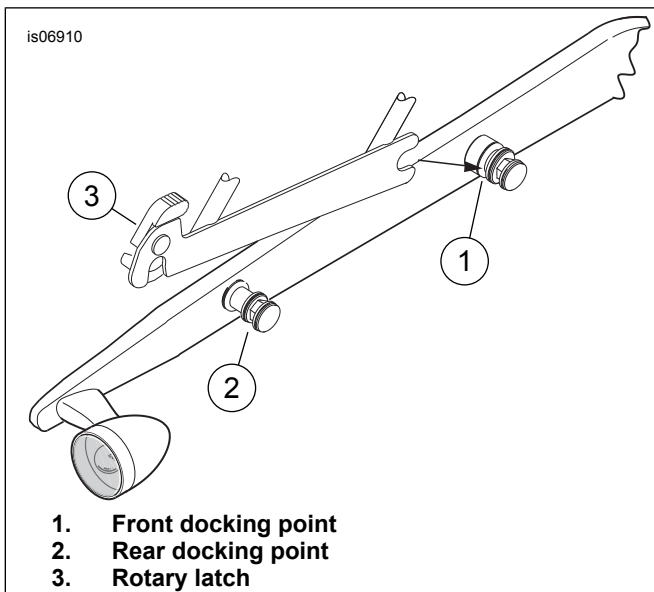


Figure 11. Push front notches down into front docking points on fender.

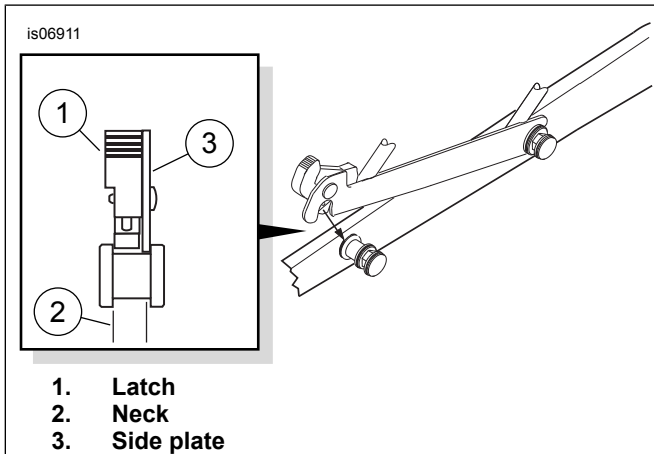


Figure 12. Pull back rotary latches and lower handrail onto turn rear docking points.

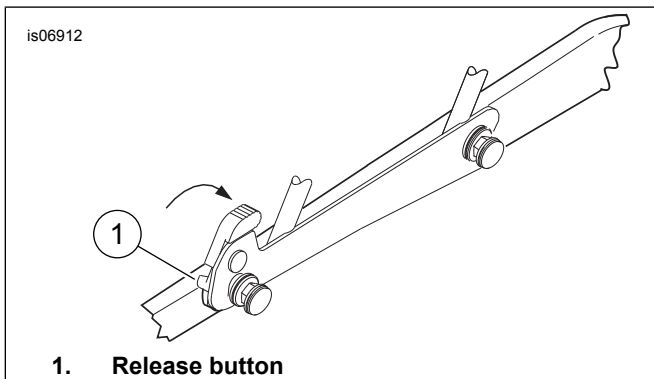


Figure 13. Close rotary latches by pushing latch fully forward.

Saddlebag Reattachment

1. See Figure 15. Slip saddlebag mount onto studs (1) and install flanged locknuts (9).

2. Attach bottom part of saddlebag support to the lower support. Tighten acorn nut to 22–27 N·m (16–20 ft-lbs).
3. Repeat steps 1 and 2 to mount other saddlebag.

▲ WARNING

Federal Motor Vehicle Safety Standard (FMVSS) 108 requires motorcycles to be equipped with rear and side reflectors. Be sure rear and side reflectors are properly mounted. Poor visibility of rider to other motorists can result in death or serious injury. (00336b)

4. **U.S. Customers only:** Install the reflectors included in the kit in the locations shown.
5. See Figure 14 and Figure 15. Install a round reflector (1) on each saddlebag, using screw (2), washer (3) and nut (4) as follows:
 - a. Center the reflector on lower center of bag and mark hole location.
 - b. Punch hole in saddlebag and mount reflector with pan head screw, washer and locknut as shown.
 - c. Repeat on opposite side.

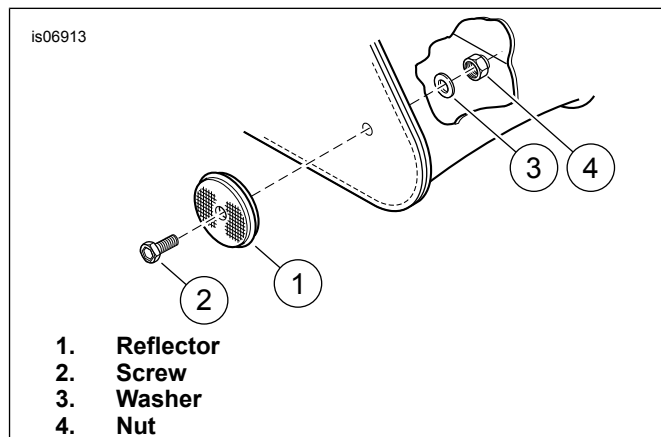


Figure 14. Install reflectors from kit

NOTE

In time docking points may wear, causing the mating luggage rack or sideplates to become loose and rattle. The fit may be tightened using the following procedure.

- Loosen docking hardware
- Rotate docking points clockwise approximately 45°
- Tighten docking hardware to the appropriate torque values.

Repeat as often as required, up to 3 times. After 3 times, new docking points must be installed.

SERVICE PARTS

is06915

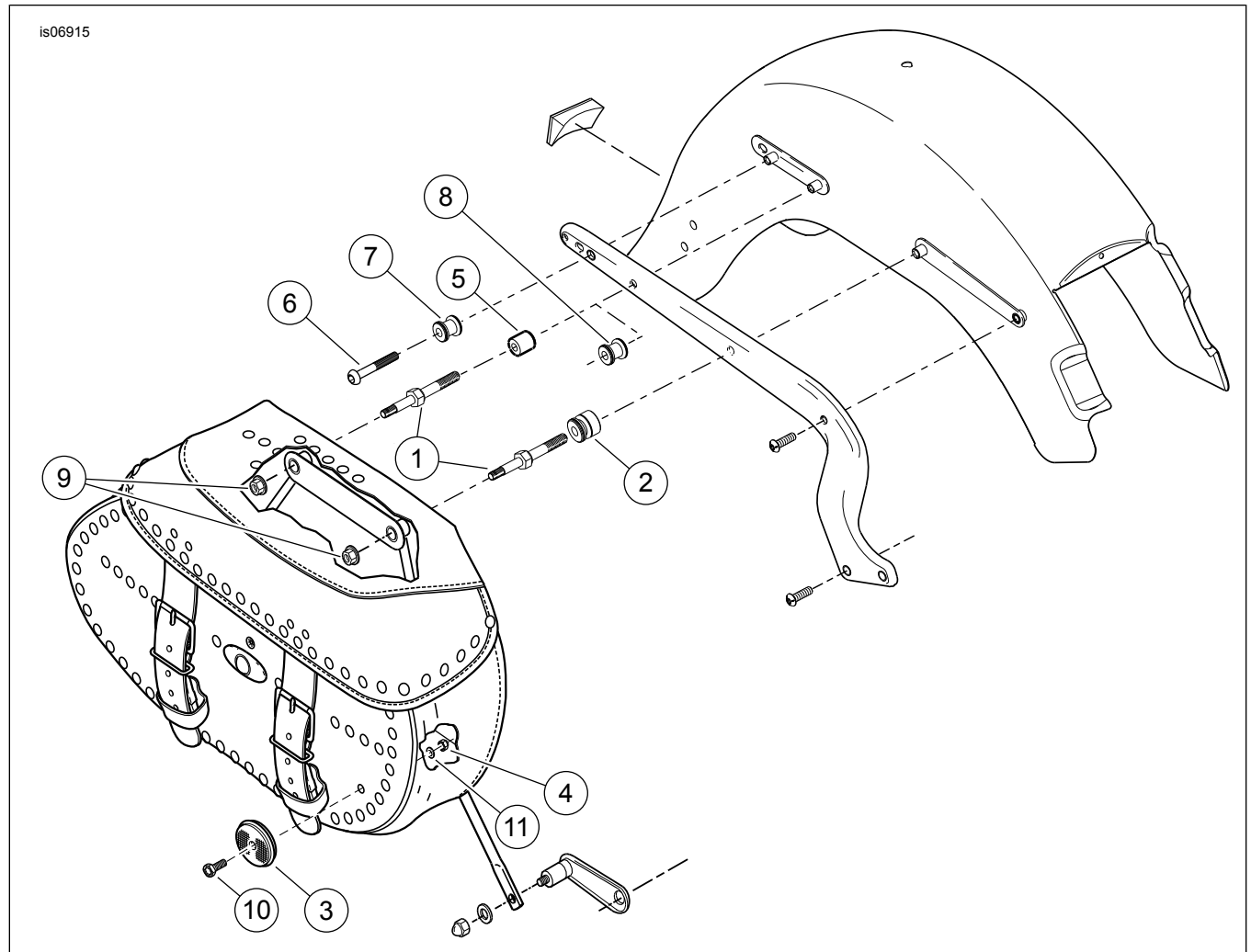


Figure 15. Service Parts: Docking Hardware Kit

Table 3. Service Parts Table

Item	Description (Quantity)	Part Number
1	Stud (4)	90387-03
2	Docking point, front (2)	53683-96
3	Reflector (2)	59264-86
4	Nut for reflector (2)	7626W
5	Spacer (2), On FLSTC and FLSTS when installing Detachable Sideplates or Detachable Tour-Pak Rack.	53823-00
6	Screw, hex socket button 3/8-16 x 1.75 inch (2)	4246
7	Docking point, rear (2), On FLSTC and FLSTS when installing Detachable Sideplates or Detachable Tour-Pak Rack.	53684-96A
8	Docking point, rear (2), On FLSTS when installing Detachable Solo Rack or Detachable Passenger Handrail. Used only to provide clearance for the rack. Do not install spacer for this application.	53684-96A
9	Locknut, flanged 5/16-18 (4)	7531
10	Screw, for reflector(2)	2587
11	Washer, for reflector(2)	6716