



INSTRUCTIONS

J00666

2011-03-03



SOFTAIL DOCKING HARDWARE WITHOUT SADDLEBAG SUPPORTS

GENERAL

Kit Number

53531-95B

Models

For model fitment information, see the P&A Retail Catalog or the Parts and Accessories section of www.harley-davidson.com (English only).

Additional Parts Required

Turn signal relocation kit, (Part Number 53692-96), must be installed prior to installing this docking hardware kit on all FXSTS, FXSTSB, FXSTC, and FLSTF models. Relocation kit 68548-87A does not work with this kit.

⚠ WARNING

Rider and passenger safety depend upon the correct installation of this kit. Use the appropriate service manual procedures. If the procedure is not within your capabilities or you do not have the correct tools, have a Harley-Davidson dealer perform the installation. Improper installation of this kit could result in death or serious injury. (00333b)

NOTE

This instruction sheet references service manual information. A service manual for your model motorcycle is required for this installation and is available from a Harley-Davidson Dealer.

Kit Contents

See Figure 1 and Table 1.

INSTALLATION

1. Install turn signal relocation kit, (Part Number 53692-96), if not done already.

NOTE

Perform the following procedures on one side of the motorcycle at a time until instructed to go to the other side.

2. See Figure 1. Remove the original bolts and acorn nuts from the two fender support bracket docking point locations as shown. Discard the bolts and acorn nuts.

3. Install the front docking point (1) and rear docking point (2) as shown. Insert the bolt (4) through the docking point and into the fender, then install the washer (3) and locknut (5) on the inside of the fender. Torque the bolts (4) to 37 N-m (27 ft-lbs).

NOTE

Use care when removing the reflector from the motorcycle to avoid damaging painted or chromed surfaces, or damaging the reflector, which must be reused.

⚠ WARNING

Federal Motor Vehicle Safety Standard (FMVSS) 108 requires motorcycles to be equipped with rear and side reflectors. Be sure rear and side reflectors are properly mounted. Poor visibility of rider to other motorists can result in death or serious injury. (00336b)

4. Carefully remove the rear reflector. Remove any remaining adhesive from the back side of the reflector and any adhesive from the side of the fender or fender support bracket.
5. See Figure 1. Reattach the reflector to the forward part of the fender support bracket with the double sided adhesive tape included in this kit. Trim the tape to match the shape of the reflector.
6. Repeat steps 2 through 5 for the other side of the motorcycle.

MAINTENANCE

1. In time docking points may wear, causing the mating luggage rack or sideplates to become loose. The fit may be tightened using the following procedure:
 - a. Loosen docking hardware.
 - b. Rotate docking points clockwise approximately 45 degrees.
 - c. Tighten docking hardware to the appropriate torque values.
2. Repeat as often as needed, up to 3 times.



SERVICE PARTS

is06957

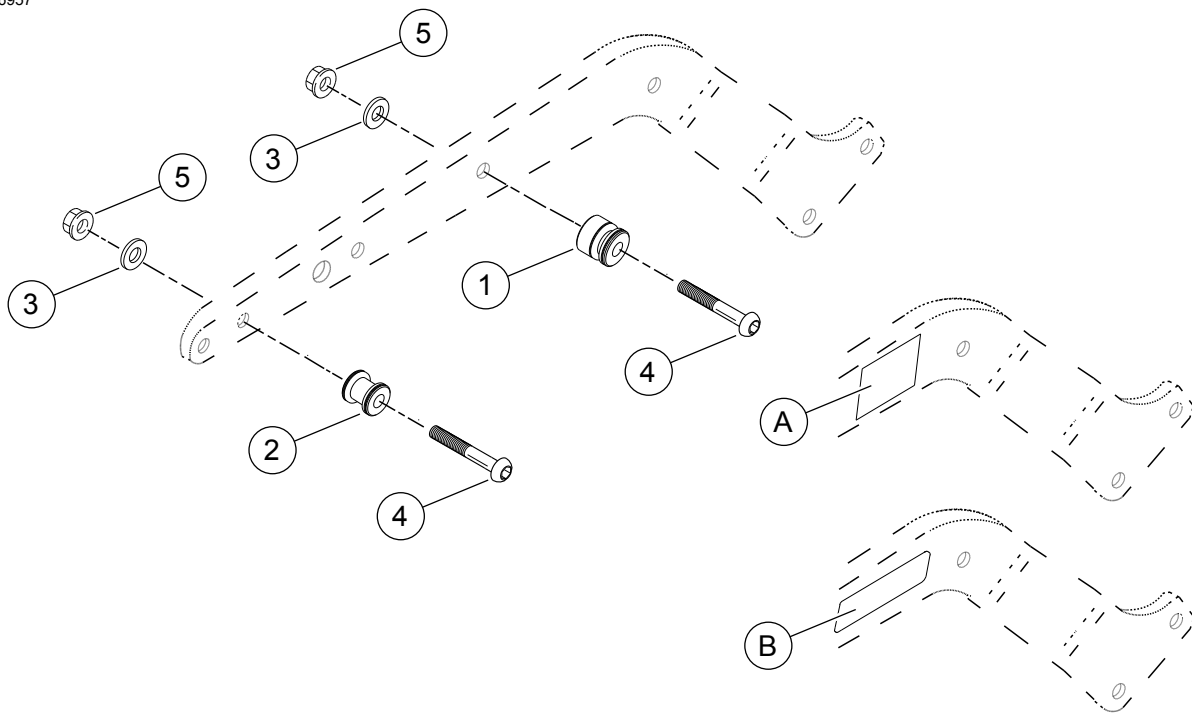


Figure 1. Service Parts: Softail Docking Hardware Without Saddlebag Supports

Table 1. Service Parts Table

Item	Description (Quantity)	Part Number
1	Docking points, front (2)	53683-96
2	Docking points, rear (2)	53684-96A
3	Washers, 3/8 x 13/16 x 2-1/4 (4)	6701
4	Bolts, button head, 3/8-16 x 2-1/4 (4)	4154
5	Locknuts, hex 3/8-16 x 7/16 x 9/16 (4)	7778
6	Double sided adhesive tape (not shown)	Not Sold Separately
Items mentioned in text:		
A	New location for short style reflector	
B	New location for long style reflector	