



# INSTRUCTIONS

J03594

2005-01-03



## DYNA VOLTAGE REGULATOR KIT

### GENERAL

#### Kit Number

74665-04, 74667-06

#### Models

**Kit 74665-04** fits 2004 through 2005 FXDL/I (Dyna™ Low Rider®) and FXDWG/I (Dyna™ Wide Glide®) model motorcycles.

**Kit 74667-06** fits 2006 and later Dyna™ model motorcycles.

#### Kit Contents

See Figure 1 and Table 1.

### INSTALLATION

1. Remove and discard the original voltage regulator mounting screws.
2. See Figure 1. Place a chrome washer (4) onto each of the button head screws (5) from the kit. Insert the screws into the mounting holes in the **new** voltage regulator cover (1). Place first a spacer (2), then a Nylon washer (3) over the screw threads on the inside of the cover.
3. Fasten the cover through the voltage regulator into the motorcycle frame. Tighten to 6.8–9 N·m (60–80 in-lbs).

### SERVICE PARTS

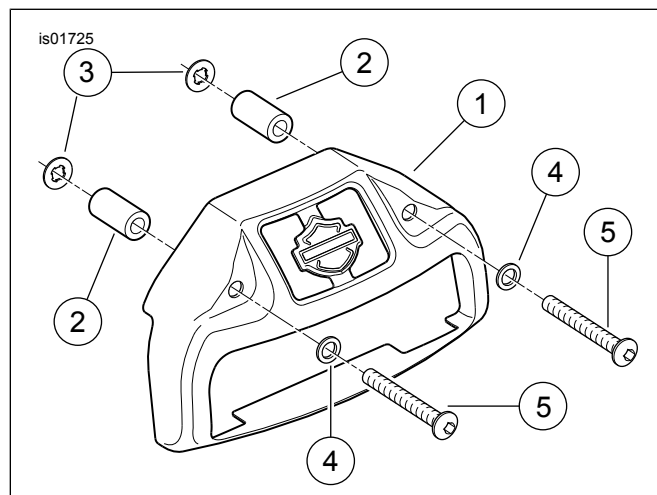


Figure 1. Voltage Regulator Cover Components

Table 1. Service Parts: Voltage Regulator Cover Components

Item	Description (Quantity)	Part Number
1	Regulator cover	Not Sold Separately
2	Spacer, 1.0 inch (25 mm) long (2)	Not Sold Separately
3	Washer, Nylon (2)	62917-01
4	Washer, Chrome (2)	Not Sold Separately
5	Screw, button head, hex socket 1/4-20 x 2-1/4 inch long (2)	Not Sold Separately