



INSTRUCTIONS

J03954

2006-11-15



DETACHABLE WINDSHIELD KIT

GENERAL

Kit Number

57240-05, 57898-04, 57969-97A, 58669-04, 58770-96, 58771-96, 58772-97, 58783-97, 58907-96A

Models

Table 1. Models

Kits	Description	Fitment
57240-05	Clear, standard height with flames, king shape	B
57898-04	Clear, standard height with flames, compact	A
57969-97A	Super sport, smoked	A
58669-04	Clear, standard height, compact with skull	A
58770-96	Clear, standard height, compact	A
58771-96	Smoked, low profile, compact	A
58772-97	Clear, king, standard height	B
58783-97	Smoked, king, low profile	B

Fitment A: These kits fit 1993 and later FXSTS, FXSTSB and FXSTSSE model motorcycles.

Fitment B: These kits fit 1997 and later FLSTS and 2005 and later FLSTSC model motorcycles.

Kit 58907-96A contains the docking hardware required to mount any of the above windshields.

NOTICE

Do not use windshield bags with flamed windshields. Damage to graphics will occur. (00393f)

Additional Parts Required

⚠ WARNING

Rider and passenger safety depend upon the correct installation of this kit. Use the appropriate service manual procedures. If the procedure is not within your capabilities or you do not have the correct tools, have a Harley-Davidson dealer perform the installation. Improper installation of this kit could result in death or serious injury. (00333b)

NOTE

A Service Manual for your model motorcycle is available from your Harley-Davidson Dealer.

Kit Contents

See Figure 5 and Table 2, Figure 6 and Table 3, Figure 7 and Table 4.

INSTALLATION

NOTE

Cover gas tank with a blanket or soft cloth for protection from possible scratches.

1. Remove and retain acorn nuts that secure spring bridge on top of the front fork. Remove and retain spring bridge and lockwashers.
2. Remove and retain bolt that attached the headlamp mounting block to front fork. Remove headlamp and position so that it will not get scratched.

NOTE

Do not remove the headlamp from the mounting block. Position headlamp so that chrome will not be scratched.

3. Remove tie wraps that hold the handlebar wires to the handlebar risers.
4. Remove and discard 5/16-24 x 1/2 inch socket button head screw on right hand side of fork that retains the brake line and throttle cable clamps. Remove and discard clamps.
5. Remove and discard 5/16-24 x 3/8 inch socket button head screw and 5/16 inch external tooth lockwasher on left hand side of fork.

NOTE

Support handlebars during handlebar clamp removal to prevent possible scratches to the fuel tank.

6. Loosen 4 screws of upper handlebar clamps. Remove and retain clamps and screws. Remove handlebars and position so they will not scratch the fuel tank.
7. Remove and retain left handlebar riser and all related hardware. Note the order of the components for later reassembly.
8. See Figure 5. Place foam tape (8) from kit along inside of chrome windshield bracket (1) as shown.

NOTE

When sliding chrome windshield bracket into place, be careful not to pinch or twist any wires. Pinched or twisted wires may cause headlamp failure.



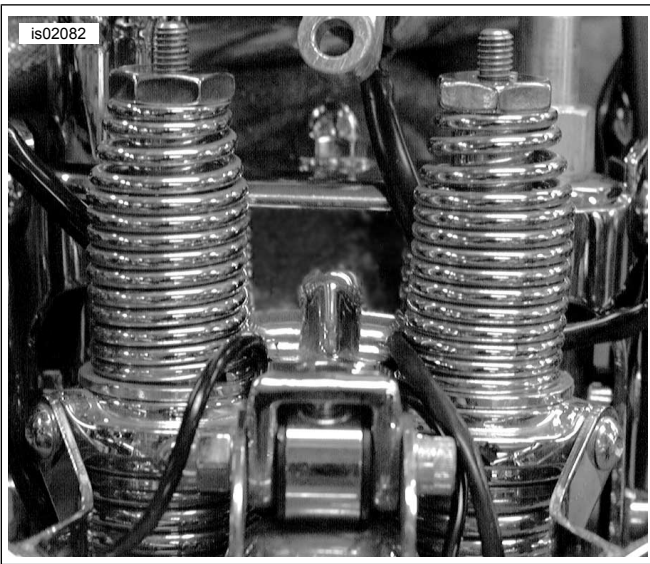


Figure 1. Routing Wires Around Bracket

9. See Figure 1. Slide chrome windshield bracket into place. Keep handlebar wires to outside front of bracket.
10. Reinstall left handlebar riser with original washers and locknut. Tighten locknut to 33.9–47.4 N·m (25–35 ft-lbs).
11. Reinstall handlebars according to Service Manual instructions.
12. Loosely install headlight assembly using original mounting bolt.

NOTE

Position brake line and throttle clamps as shown in Service Parts Illustration. Failure to position clamps correctly may cause scratches or other damage to the gas tank.

Be careful not to cross thread bolts as this will damage threads in holes and on bolts.

13. See Service Parts illustrations to aid in mounting hardware selection.
 - a. **For FXSTS, FXSTSB models with passing lamps:** Use 3/4 inch buttonhead screw (2) for the left side attachment and use 7/8 inch button head screw (3) for the right side attachment.
 - b. **For FXSTS, FXSTSB models without passing lamps:** Use 5/8 inch buttonhead screw (4) for the left side attachment and use 3/4 inch button head screw (2) for the right side attachment.
 - c. **For FLSTS models (with or without passing lamps):** Use 5/8 inch button head screw (4) for the left side attachment and use 3/4 inch buttonhead screw (2) for the right side attachment.

- d. **For ALL models:** On left side, install correct buttonhead screw (See Step 13a-13c above) through 5/16 inch lockwasher (5), bracket and into left side fork mounting hole. Do not tighten at this time. See Figure 2. On right side, install correct buttonhead screw (See Step 13a-13c) through the throttle cable guide (10), 5/16 inch washer (6) bushing (7), another 5/16 inch washer and into the lower right side cable guide. Tighten bolt so that cable guide pivots as handlebars are turned. Rotate handlebars to the full left turn position, then rotate handlebars to center position. Cable guide should stop in an angled position. See Figure 2. Rotate handlebars to the full right turn position. Check for full throttle function (grip snaps back).

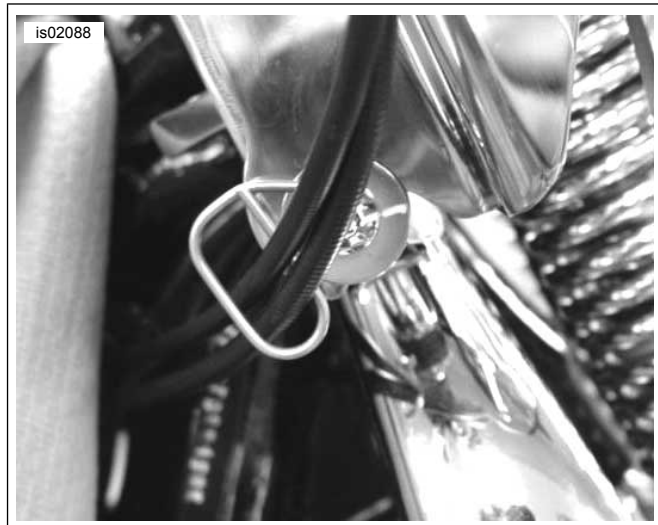


Figure 2. Throttle Cable Guide

14. Tighten headlamp mounting block bolt to 40.7 N·m (30 ft-lbs).
15. Tighten side screws to 25.8 N·m (19 ft-lbs).

NOTE

After installation, check clearance of throttle cable guide to the fuel tank. Failure to position guide correctly may cause scratches or other damage to the gas tank.

NOTE

Do not operate vehicle without spring bridge in place as this may adversely affect handling.

⚠ WARNING

Before starting engine, be sure throttle control will snap back to idle position when released. A throttle control that prevents engine from automatically returning to idle can lead to loss of control, which could result in death or serious injury. (00390a)

16. Reinstall spring bridge with original acorn nuts and lockwashers. Tighten to 40.7–47.4 N·m (30–35 ft-lbs).
17. See Service Parts illustrations. Install 4 docking points by putting screw (3) through flat washer (6), rubber bushing (7) and washer (6) as shown. Tighten screws to 25.8 N·m (19 ft-lbs).

Installing Windshield

1. See Figure 3. Relocate clutch cable to the inside of the handlebars as shown in illustration as follows:
 - a. Slide rubber boot off cable adjuster. Adjuster is located approximately halfway along clutch cable by the front frame downtube.
 - b. Holding cable adjuster with 1/2 inch wrench, loosen jam nut using a 9/16 inch wrench. Back jam nut away from cable adjuster. Move adjuster toward jam nut to introduce a large amount of free play at the hand lever.
 - c. Remove small snap ring from pivot pin groove at bottom of clutch lever bracket. Remove pivot pin and clutch hand lever from bracket.
 - d. See Figure 3. Reroute clutch cable to the inside of the handlebars. Reconnect clutch cable to clutch lever with original parts by reversing Step c.
 - e. See Figure 4. Turn cable adjuster away from jam nut until slack is eliminated at hand lever. Pull clutch cable ferrule away from clutch lever bracket to check free play. Turn cable adjuster as necessary to obtain 1/16 to 1/8 inch (1.6-3.2 mm) free play between end of cable ferrule and clutch lever bracket.
 - f. Hold adjuster with 1/2 inch wrench. Using 9/16 inch wrench, tighten jam nut against cable adjuster. Cover cable adjuster mechanism with rubber boot.
 - g. Place tie wrap around right handlebar riser to hold wires.
 - h. **On FXSTSB models:** Place tie wrap around left handlebar riser to hold wires and clutch cable. **On FXSTS models:** Place tie wrap around left handlebar riser to hold wires.



Figure 3. Clutch Cable Routing

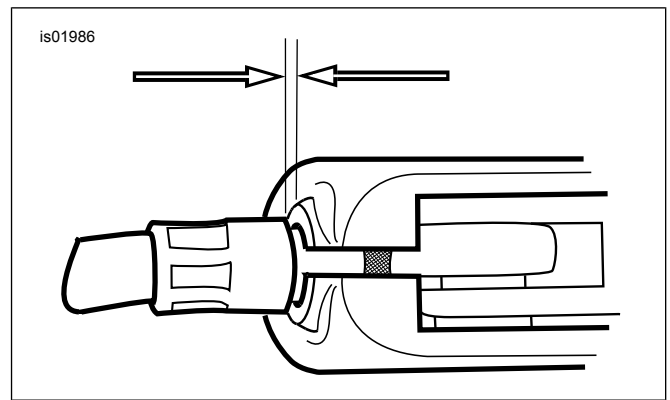


Figure 4. 1/16-1/8 inch (1.6-3.2 mm) Clutch Cable Free Play

2. Slide windshield into place by hooking lower windshield "jaws" into lower bushings, then hook the upper windshield "jaws" into the upper bushings. Firmly push the windshield into place.
3. Latch the retaining springs on the top docking point.

⚠ WARNING

Improper installation of accessories or loading of cargo can affect motorcycle stability and handling, which could result in death or serious injury. (00455b)

⚠ WARNING

Failure to provide adequate clearance between stationary and moving parts can cause loss of control, which could result in death or serious injury. (00378a)

NOTE

Inspect windshield upon completion of installation. Be sure windshield mounting does not restrict full left or full right movement of front fork assembly. Restricted movement could affect handling, resulting in death or serious injury. If restriction does occur, adjust windshield as needed until proper clearance is obtained. Have experienced Harley-Davidson service personnel correct any problems before riding with this accessory installed.

NOTE

Check mounting hardware periodically. Never ride with loose mounts. A loose mounting causes extra stress on all other mounts, as well as the windshield itself, and could result in premature failure of components.

CARE AND CLEANING

NOTE

Sunlight reflections off of the inside curvature of a windshield can, at certain times of the day, cause extreme heat build-up on motorcycle instruments. Exercise care in parking. Park facing the sun, place an opaque object over the instruments, or adjust the windshield to avoid reflections.

NOTICE

Harley-Davidson windshields are made of Lexan. Lexan is a more durable and distortion-resistant material than other types of motorcycle windshield material, but still requires attention and care to maintain. Failure to maintain Lexan properly can result in damage to the windshield. (00230b)

NOTICE

Use only Harley-Davidson recommended products on Harley-Davidson windshields. Do not use harsh chemicals or rain sheeting products, which can cause windshield surface damage, such as dulling or hazing. (00231c)

NOTICE

Do not use benzene, paint thinner, gasoline or any other type of harsh cleaner on the windshield. Doing so will damage the windshield surface. (00232c)

Do not clean Lexan® polycarbonate in hot sun or high temperature. Powdered, abrasive or alkaline cleanser will damage the windshield. Never scrape the windshield with a razor blade or other sharp instruments because permanent damage will result.

NOTE

Covering the windshield with a clean, wet cloth for about 15 minutes before washing will make dried bug removal easier.

Harley-Davidson Windshield Water Repellent Treatment part number 99841-01 is approved for use on Harley-Davidson Lexan® windshields.

SERVICE PARTS

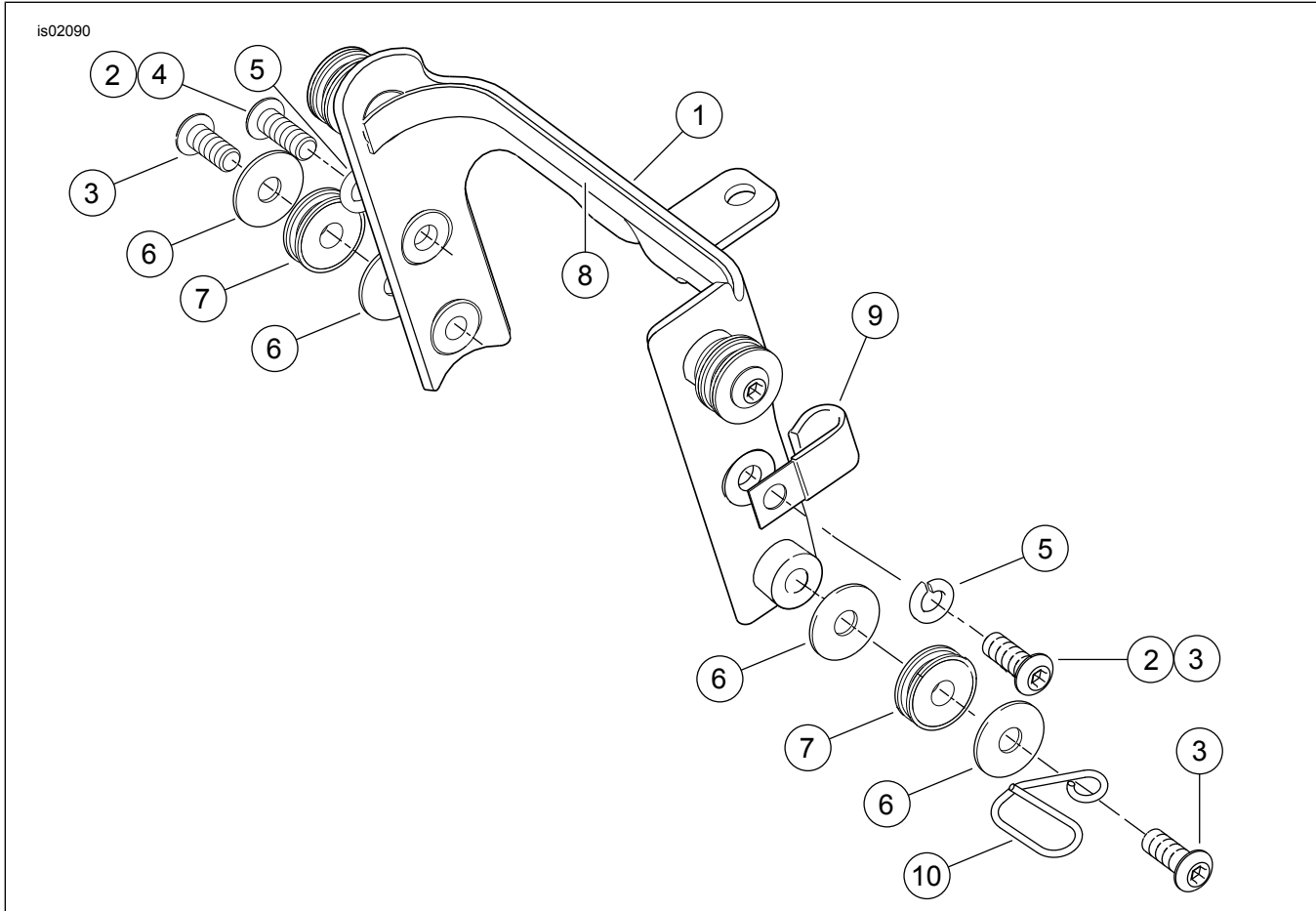


Figure 5. Detachable Windshield Bracket Kit

Table 2. Service Parts: Detachable Windshield Bracket Kit

Kit 58907-96A		
Item	Description (Quantity)	Part Number
1	Bracket, windshield, chrome	58912-96
2	Screw, button head 3/4 inch (2)	94548-97
3	Screw, button head 7/8 inch (5)	94467-94T
4	Screw, button head 5/8 inch	94468-94T
5	Lockwasher (2)	94081-90T
6	Washer, flat (8)	6373
7	Bushing (4)	67621-94
8	Tape, foam	58811-96
9	Clamp, brake line	10192
10	Clamp, throttle guide	10206A
	Cable strap, (2) (not pictured)	10006

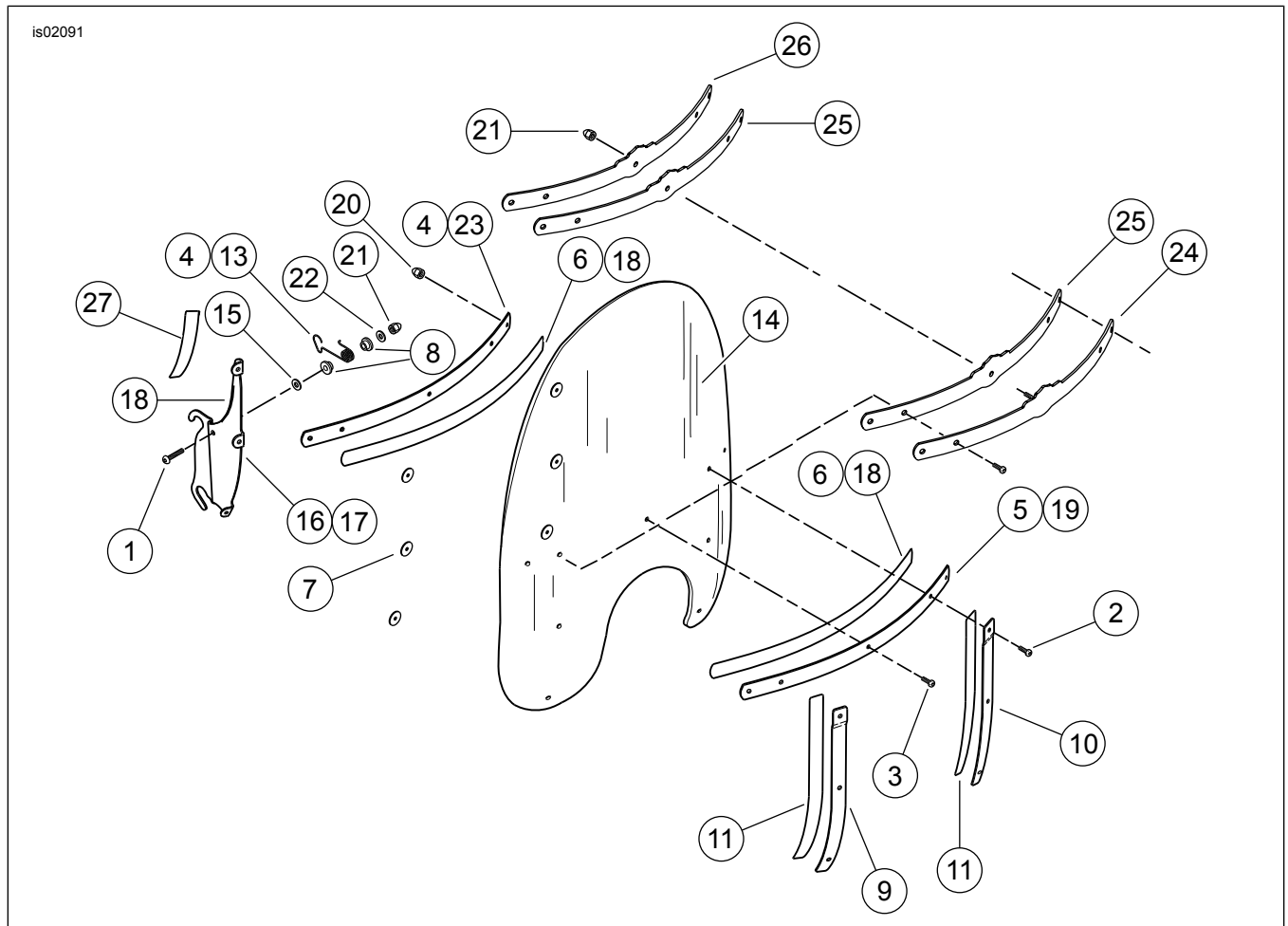


Figure 6. Detachable Windshield Kits

Table 3. Service Parts: Detachable Windshield Kits

Kits 58770-96, 58771-96, 58772-97, 58783-97, 58669-04, 57240-05						
Item	Description (Quantity)	Part Number		Item	Description (Quantity)	Part Number
1	Screws (2)	94316-91T			Compact, low profile, smoked	58805-96
2	Screws, 12-24 x 7/8 inch TORX (2)	2452			Compact, standard height with flames	57912-04
3	Screws, 12 x 5/8 inch TORX, locking (7)	2921			King, standard height with flames	57242-05
4	Brace, inner windshield (Kits 58770-96, 58771-96 only)	58050-78A	15		Washer (2)	58794-96
5	Brace, outer windshield (Kits 58770-96, 58771-96 only)	59051-78A	16		Bracket, windshield right	58797-96
6	Tape, windshield brace (Kits 58770-96, 58771-96 only) (2)	58052-78	17		Bracket, windshield left	58798-96
7	Washers (rubber) (6)	58152-96	18		Tape, windshield brace (Kits 58772-97, 58783-97, 57240-05)	58539-97
8	Bushings, nylon (4)	58272-95	19		Brace, outer windshield (Kits 58772-97, 58783-97, 57240-05)	58909-96
9	Bracket, outer windshield, RH	58406-75A	20		Acorn nuts, 12-24 x 3/8 inch (9)	7651
10	Bracket, outer windshield, LH	58408-75A	21		Acorn nuts, 1/4-20 inch (3)	94004-90T
11	Tape	58417-77	22		Chrome flat washers 1/4 inch (2)	6703
12	Retaining spring, right	58579-96A	23		Brace, inner windshield (Kits 58772-97, 58783-97, 57240-05)	58910-96
13	Retaining spring, left	58580-96A	24		Brace, outer windshield (Kit 58669-04 "Skull with Wings" logo)	58550-04
14	Replacement windshield:		25		Tape, windshield brace (2) (Kit 58669-04)	58540-04
	King, standard height, clear	58559-97	26		Brace, inner windshield (Kit 58669-04 "Skull with Wings" logo)	58551-04

Table 3. Service Parts: Detachable Windshield Kits

Kits 58770-96, 58771-96, 58772-97, 58783-97, 58669-04, 57240-05					
Item	Description (Quantity)	Part Number	Item	Description (Quantity)	Part Number
	King, low profile, smoked	58560-97	27	Trim strip	62540-83
	Compact, standard height, clear	58804-96			

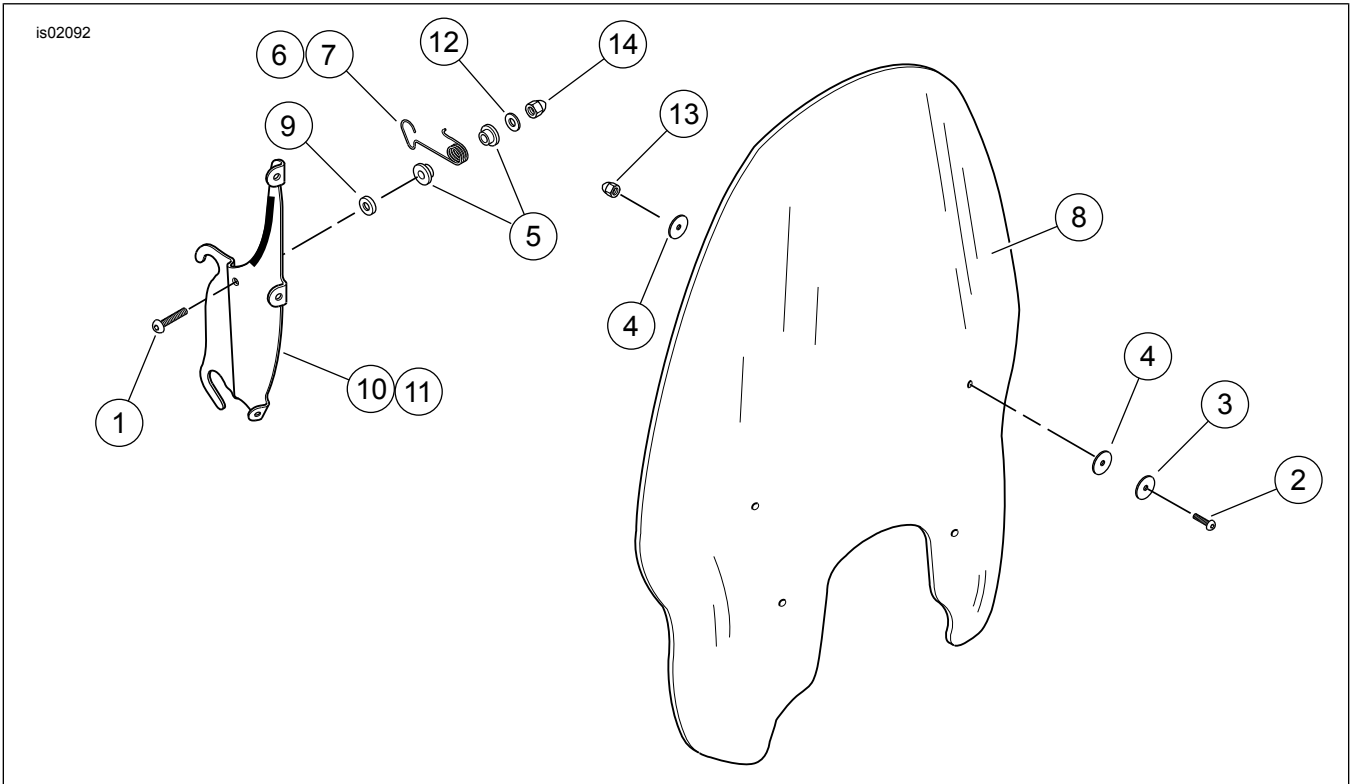


Figure 7. Detachable Windshield Kits

Table 4. Service Parts: Detachable Windshield Kits

Kit 57969-97A					
Item	Description (Quantity)	Part Number	Item	Description (Quantity)	Part Number
1	Screws (2)	94316-91T	8	Replacement windshield	57732-98A
2	Screws (4)	94639-99	9	Washers (2)	58794-96
3	Washers (4)	6352	10	Bracket, windshield right	57972-97
4	Washers, rubber (8)	58272-95	11	Bracket, windshield left	57971-97
5	Bushing, nylon (4)	58272-95	12	Chrome flat washers, 1/4 inch (2)	6703
6	Retaining spring, right	58579-96A	13	Acorn nuts (4)	94007-90T
7	Retaining spring, left	58580-96A	14	Acorn nuts, 1/4-20 (2)	94004-90T