



INSTRUCTIONS

J02458

2011-11-15



ENGINE GUARD FOOTPEG BILLET MOUNTING KIT

GENERAL

Kit Number

50957-02B, 54234-10

Models

For model fitment information, see the P&A Retail Catalog or the Parts and accessories section of www.harley-davidson.com

Additional Parts Required

This kit requires installing a set of footpegs, sold separately and available from a Harley-Davidson dealer.

This kit requires installing Footpeg Bolt Kit 94133-01, sold separately and available from a Harley-Davidson dealer.

This kit requires LOCTITE® 243 Threadlocker and Sealant - Blue (99642-97), sold separately and available from a Harley-Davidson dealer.

Kit Contents

See Figure 1 and Table 1.

INSTALLATION

- See Figure 1. Position a footpeg mount (3) and clamp (1) on the engine guard. Position the footpeg mount (3) to allow the footpegs to fasten on the inboard side of the engine guard.
- Apply LOCTITE® 243 (blue) to two screws (4).
- Use the screws from Step 2 to fasten the footpeg mount in a comfortable location on the engine guard. Hand tighten each screw. Alternate between screws when tightening until each screw has reached a torque of 19 N·m (14 ft-lbs).
- Install a footpeg, sold separately, using the spring washer (2), and bolt and locknut (from kit 94133-01). Position the spring washer inside the footpeg mount with the square edge toward the inside of the mount. Tighten locknut to 26 N·m (19 ft-lbs).
- Repeat Steps 1-4 on the other side of the motorcycle.

SERVICE PARTS

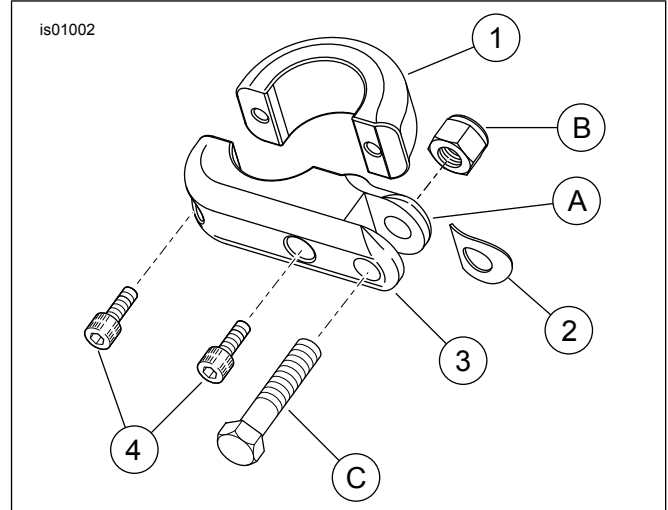


Figure 1. Service Parts: Engine-Guard Footpeg Billet Mounting Kit

Table 1. Service Parts Table

Kit	Item	Description (Quantity)	Part Number
50957-02B	1	Clamp (2)	51009-02A
	2	Spring washer (2)	50912-72
	3	Billet footpeg mount (2)	50988-02A
	4	Socket head screw (4)	4617
54234-10	1	Clamp, black (2)	50500017
	2	Spring washer (2)	50912-72
	3	Billet footpeg mount, black (2)	50500016
	4	Socket head screw (4)	4617
Items mentioned in text, but not included in kit:			
		A	Position this part of the bracket toward the motorcycle
		B	Locknut from kit 94133-01
		C	Bolt from kit 94133-01