



INSTRUCTIONS

J03958

2013-07-31



DYNA OIL COOLER KIT AND CHROME OIL COOLER COVER

GENERAL

Kit Number

26151-07B

Models

For model fitment information, see the P&A Retail Catalog or the Parts and Accessories section of www.harley-davidson.com (English only).

Additional Parts Required

⚠ WARNING

Rider and passenger safety depend upon the correct installation of this kit. Use the appropriate service manual procedures. If the procedure is not within your capabilities or you do not have the correct tools, have a Harley-Davidson dealer perform the installation. Improper installation of this kit could result in death or serious injury. (00333b)

NOTE

This instruction sheet references service manual information. A service manual for your model motorcycle is required for this installation and is available from a Harley-Davidson dealer.

Recommended Special Tools

Oil filter wrench (HD-44067A) is recommended for installation of this kit. It is available for separate purchase from a Harley-Davidson dealer.

Kit Contents

See Figure 5 and Table 1.

REMOVAL

1. See Figure 2. Remove two socket head screws (7) and voltage regulator (8). Discard screws.
2. Remove electrical caddy (9) from regulator bracket of frame.
3. See Figure 1. Remove the spin-on oil filter (2) and oil adapter mounting fitting (1) from oil filter mount location.

4. Clean the oil filter mounting area thoroughly. Discard oil filter adapter.

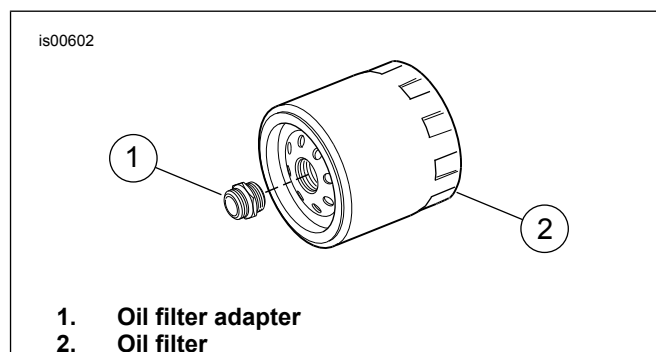


Figure 1. Oil Filter and Adapter

INSTALLATION

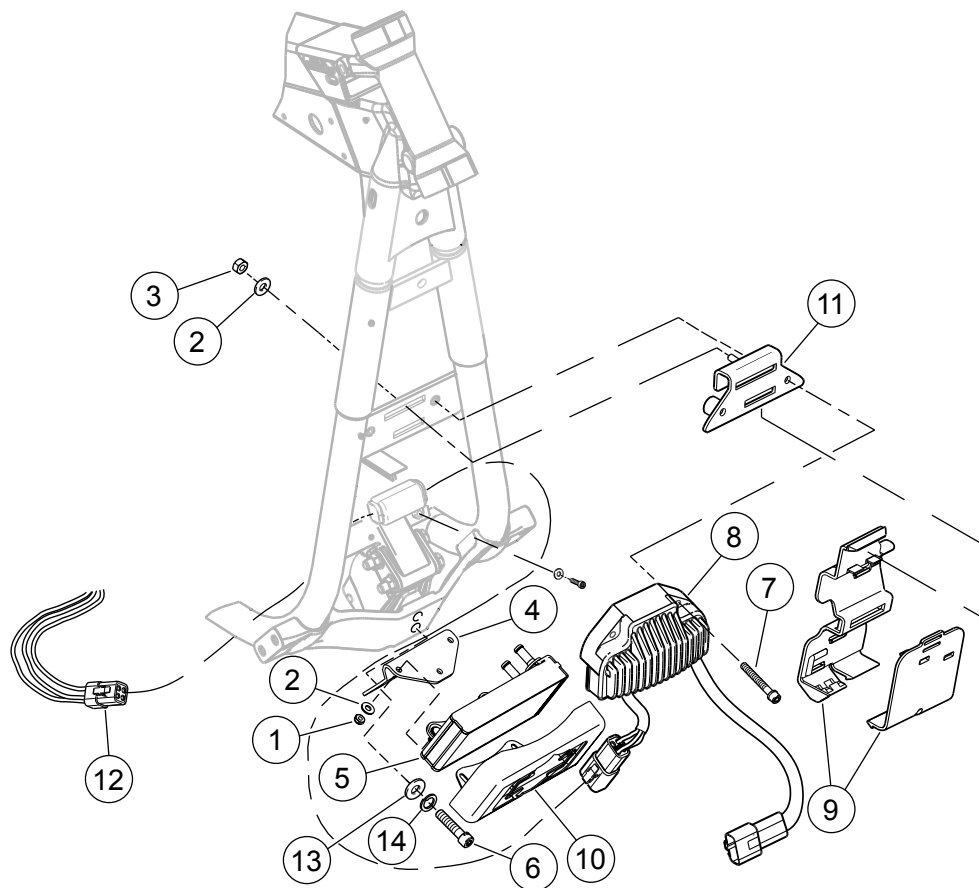
1. See Figure 2. Install electrical caddy (9) to the regulator relocation bracket (11).
2. Install the regulator relocation bracket (11) to the frame using washer (2) and hex nut (3) from the kit. Tighten the nut to 6.8–9 N·m (60–80 in-lbs).
3. Install oil cooler cover (10) onto oil cooler studs. Place mounting bracket (4) over studs, oriented as shown, and then install the washers (2) and nuts (1). Tighten the nuts to 10.9–13.5 N·m (96–120 in-lbs).

NOTE

Prior to removing the front isolator hardware, the vehicle must be in an upright and level position. When raising the jack, be sure jack does not contact or pinch the clutch cable.

4. Support front of engine with a piece of soft wood and lifting jack.
5. With motorcycle upright and level and the engine supported by a suitable jack, remove the front isolator bolts, lock washers and washers. Retain hardware for later installation.
6. See Figure 3. Install the oil cooler assembly (1) to the frame using two isolator bolts (2), two washers (4) and two lock washers (3) removed in previous step. Tighten to 28–36 N·m (21–27 ft-lbs).





- | | |
|--------------------------------|----------------------------------|
| 1. Hex nut (3) | 8. Voltage regulator |
| 2. Flat washer (4) | 9. Electric caddy |
| 3. Hex nut | 10. Chrome oil cooler cover |
| 4. Oil cooler mounting bracket | 11. Regulator relocation bracket |
| 5. Oil cooler | 12. Stator connector |
| 6. Socket head screw (2) | 13. Washer |
| 7. Socket head screw (2) | 14. Lock washer |

Figure 2. Regulator Relocation Bracket and Electrical Caddy Installation

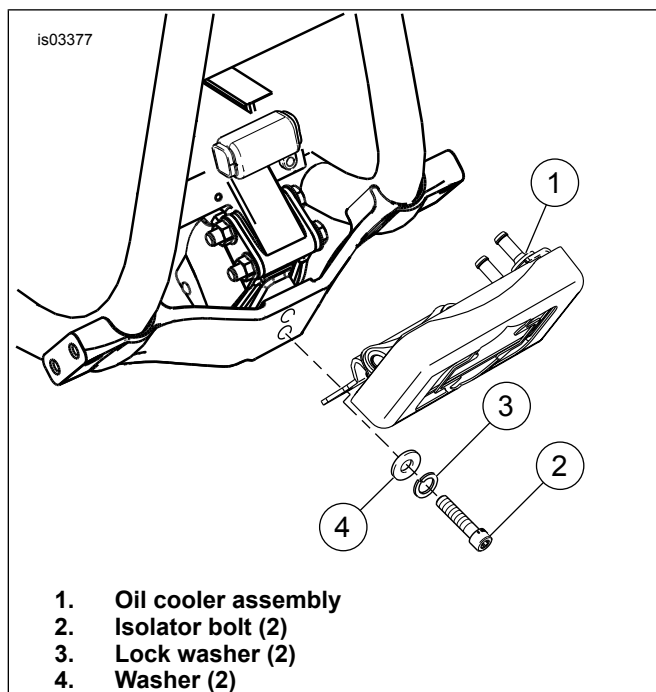


Figure 3. Oil Cooler Assembly

7. See Figure 2. Install the voltage regulator (8) to the regulator relocation bracket (11) and frame using two socket head screws (7) from the kit. Tighten screws to 6.8–9 N·m (60–80 in-lbs).
8. Secure excess cable/wire harness length to the right side downtube, if necessary.

NOTE

The oil adapter assembly has two flanges protruding from the back. The flanges must be installed toward the oil filter mounting location and through the oil adapter gasket.

9. See Figure 4. Install the oil adapter gasket (3) onto the oil filter adapter assembly (1). The oil adapter assembly flanges should be aligned so it is installed into the oil adapter gasket cutout.

NOTE

Position the stator and regulator cables to avoid interference with oil adapter assembly.

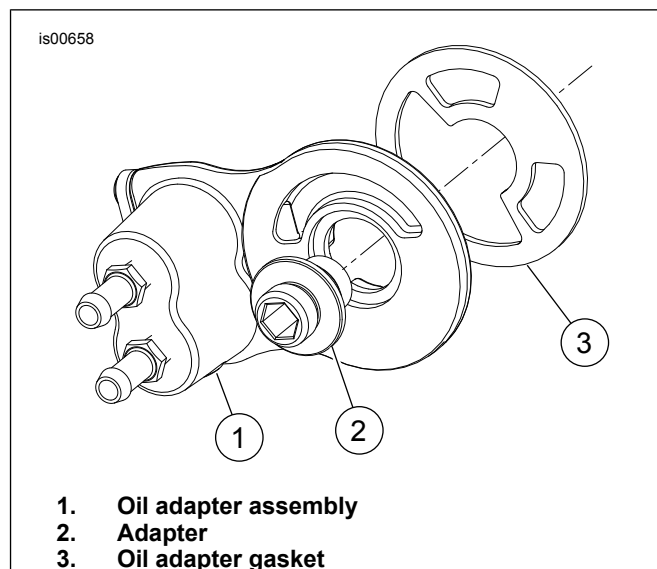


Figure 4. Install Oil Adapter

10. Install the oil adapter assembly and gasket onto the oil filter mounting surface of the engine with the adapter (2). Verify the adapter is positioned properly on the mounting surface. Verify the raised lip of the mounting fitting faces the adapter assembly. Tighten mounting fitting to 16.3–21.7 N·m (12–16 ft-lbs).
11. See Figure 5. Install two clamps (7) onto each hose (11 and 12) and follow the markings on the hoses to connect them onto the oil cooler and oil cooler adapter.
12. Fasten hoses to oil filter adapter and oil cooler with worm drive clamps (7). Tighten clamps to 0.9 N·m (8 in-lbs).

NOTE

Using an oil filter wrench (HD-44067A) will prevent damage to the crankshaft position sensor.

13. Lubricate oil filter seal with new engine oil. Use Oil Filter Wrench (HD-44067A) to install oil filter. Install filter until seal touches mounting surface, then turn an additional one-half to three-quarter turn.

NOTE

Position the clamps to avoid interference with oil filter installation. Check that hose routing is clear of the oil filter and sharp edges. The hoses must be free of bends or kinks that could obstruct oil flow.

14. Using a cable tie secure the clutch cable to the left frame downtube and away from both oil cooler hoses.
15. Verify all cables and harnesses are clear of the oil adapter.
16. Fill oil to FILL level on dipstick.

System Flow Test

NOTICE

Oil level cannot be accurately measured on a cold engine. For pre-ride inspection, with motorcycle leaning on jiffy stand on level ground, oil should register on dipstick between arrows when engine is cold. Do not add oil to bring the level to the FULL mark on a COLD engine. (00185a)

NOTICE

Do not operate the engine when the oil level is below the add mark on the dipstick at operating temperature. Engine damage will result. (00187b)

- 1. Start engine. Examine all hose connections for leaks. If there is no leakage, allow engine to warm up.
- 2. Check the engine oil level after the engine has warmed up.
- 3. Verify that temperature of oil cooler increases when engine reaches normal operating temperatures. If the oil cooler remains cool after engine has warmed up, there may be an oil obstruction. Turn off engine and check system for source of obstruction.
- 4. After engine has cooled, tighten all hose clamps again to 0.9 N·m (8 in-lbs).

SERVICE PARTS

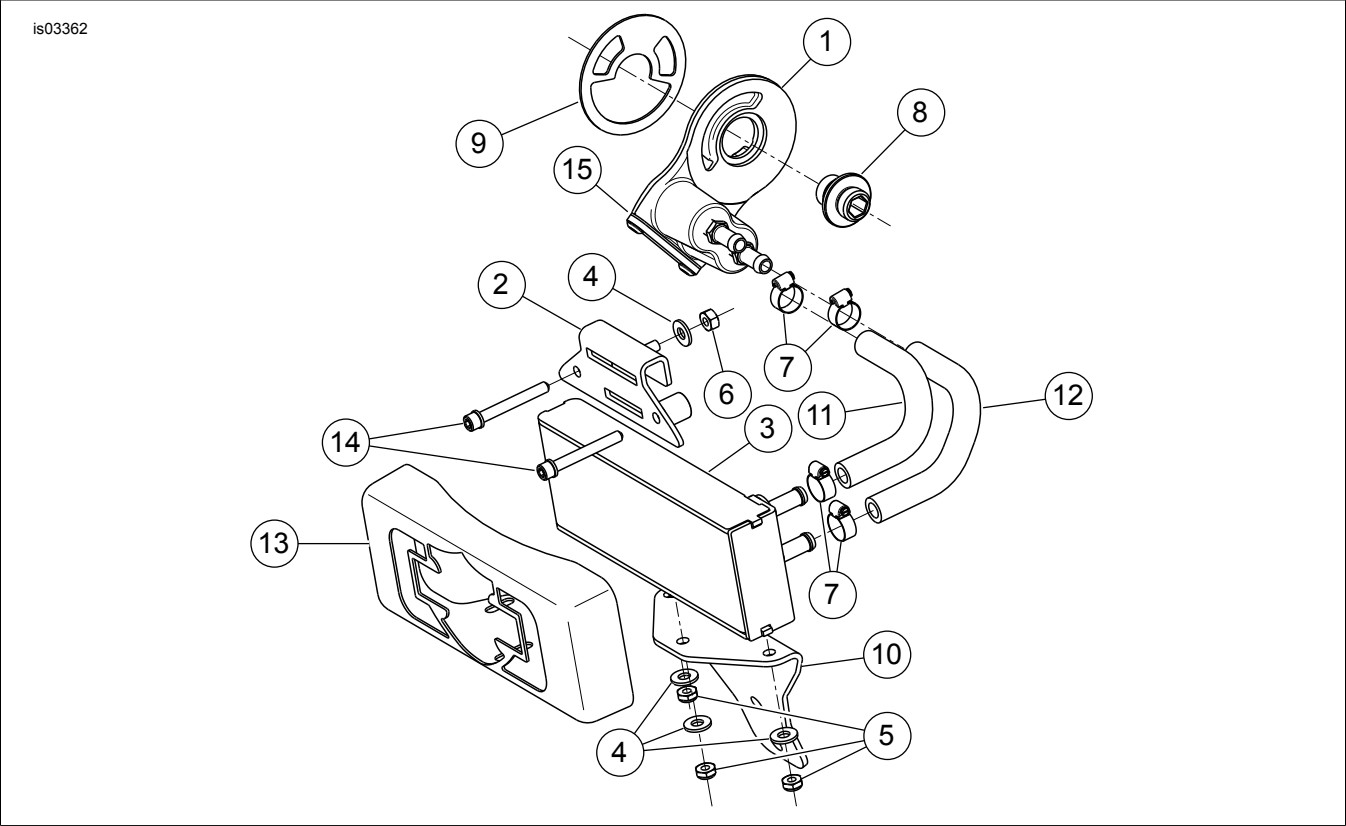


Figure 5. Service Parts for Dyna Oil Cooler Kit and Chrome Oil Cooler Cover

Table 1. Service Parts Table

Item	Description (Quantity)	Part Number
1	Oil adapter assembly	26111-05A
2	Bracket, regulator relocation	Not Sold Separately
3	Oil cooler core, Dyna	63068-07
4	Washer (4)	6703
5	Locknut, nylon insert (3)	7671
6	Nut	7688
7	Hose clamp (4)	Not Sold Separately
8	Fitting, oil adapter mounting	26041-05A
9	Gasket, oil adapter	Not Sold Separately
10	Oil cooler support, Dyna	Not Sold Separately
11	Hose, oil, top	Not Sold Separately
12	Hose, oil, bottom	Not Sold Separately
13	Cover, oil cooler	63056-07A
14	Screw, hex socket (2)	4820A

Table 1. Service Parts Table

Item	Description (Quantity)	Part Number
15	Gasket	Not Sold Separately
16	Gasket service kit (not shown) - contains gasket (9), gasket (15) and two screws	12056-05