



INSTRUCTIONS

J01766

2008-04-10



CHROME PASSENGER FOOTBOARD BRACKET KIT

GENERAL

Kit Number

53070-00

Models

For model fitment information, please see the P&A Retail Catalog or the Parts and Accessories section of www.harley-davidson.com (English only).

Additional Parts Required

Separate purchase and installation of additional parts or accessories may be required for proper installation of this kit on your model motorcycle. Please see the P&A Retail Catalog or the Parts and Accessories section of www.harley-davidson.com (English only) for a list of required parts or accessories for your model.

⚠ WARNING

Rider and passenger safety depend upon the correct installation of this kit. Use the appropriate service manual procedures. If the procedure is not within your capabilities or you do not have the correct tools, have a Harley-Davidson dealer perform the installation. Improper installation of this kit could result in death or serious injury. (00333b)

Kit Contents

See Figure 1 and Table 1.

REMOVAL

NOTE

It is not necessary to completely remove the rubber insert pad unless the pad is being replaced.

1. See Figure 1 and Table 1. With the passenger footboard in the down position, pull the inboard side of the rubber insert pad off the footboard to expose the pivot pins (A).
2. Drive one pivot pin out of the bracket pivot hole into the center pocket of the footboard base, remove the pin and set it aside. Repeat for the second pin. Taking care not to lose the spring-loaded detent ball (B) underneath, set the footboard assembly aside. Remove the detent ball and spring (C), and set aside.
3. Remove the hex socket screw and split lockwasher retaining the stock footboard bracket. Discard the bracket, screw and lockwasher.
4. Repeat for the other side.

INSTALLATION

NOTE

Three holes are available in the rear fork brackets for footboard bracket mounting. The footboards can be installed in any of three positions for passenger comfort. A plastic plug, inserted in the upper hole at the factory, can be removed.

1. See Figure 1 and Table 1. Position a new chrome footboard bracket (1) against the rear fork bracket at the desired height. The left and right brackets are identical. With the locating peg on the bracket in the next lower hole, fasten the footboard bracket with a chrome hex socket screw (2) and chrome lockwasher (3) from the kit. Torque to 64 N·m (47 ft-lbs).
2. Place the spring (removed earlier) into the retaining hole in the footboard bracket. Rest the steel detent ball on top of the spring.
3. Position the passenger footboard onto the support, in the down position, being careful not to unseat the ball.
4. With the rubber insert pad pulled back, press down on the footboard so the pivot pin holes align. Insert the pins through the footboard and through the two mounting lugs on the footboard bracket. Verify that the ball is seated in the detent on the underside of the footboard.
5. Moisten the rubber protrusions on the underside of the rubber pad with dishwashing soap to ease installation.
6. Press the rubber protrusions into the footboard cavities. Make sure the pin ends are seated in the recesses of the rubber pad, and also that the rubber extensions (at the extreme outer edges of the pad) are seated in the outside pin holes in the footboard.
7. Pivot the footboard up and down to verify proper action.
8. Repeat for the other side.

SERVICE PARTS

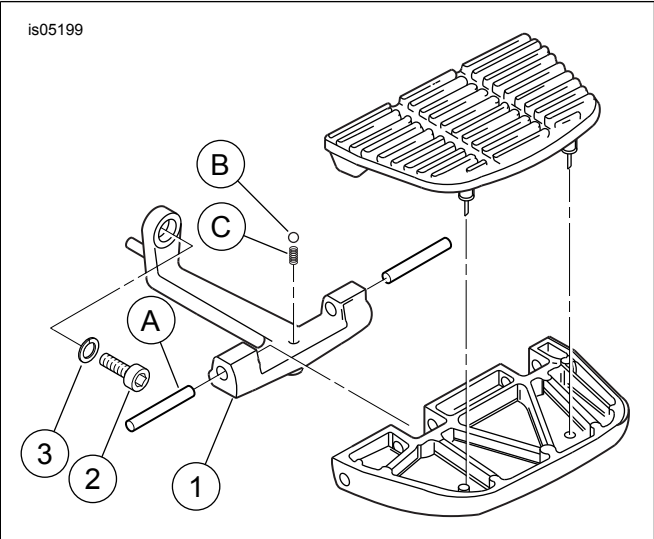


Figure 1. Service Parts: Chrome Passenger Footboard Bracket

Table 1. Service Parts

Item	Description (Quantity)	Part Number
1	Footboard bracket, chrome (2)	53071-00
2	Hex socket screw, 3/8-16 x 1 in., chrome (2)	94354-91T
3	Lockwasher, split, 3/8 in. (2)	94082-90T
Items mentioned in text, but not included in kit.		
A	Pivot pin	
B	Ball	
C	Spring	