



# INSTRUCTIONS

J02986

2003-08-07



## PASSENGER FOOTPEG KIT

### GENERAL

#### Kit Number

50203-04

#### Models

This kit fits 2004 and later XL (Sportster®) models without passenger footpegs.

This kit is also a direct replacement for the original equipment passenger footpegs on XL models so equipped.

#### Kit Contents

See Figure 1 and Table 1.

### INSTALLATION

#### Right Side

1. See the Service Parts illustration. Remove and discard the black plastic hole plugs (A) in the frame.
2. Obtain the right-side passenger footpeg (1) and two hex socket head screws (2) from the kit. Install the bracket to the frame as shown, and torque the screws to 45-50 ft-lbs (61-68 Nm).

#### NOTE

*The spring washer goes between the jaws of the footpeg support bracket along with the mounting end of the footpeg.*

#### NOTE

*Footpegs must be installed in the bracket with the rounded side of the mounting end inboard. When footpegs are properly installed, footpegs will fold upward at a 45° angle toward the rear of the motorcycle.*

#### ▲ WARNING

**Footrests must fold up and toward rear of motorcycle if struck. Failure to set footrests to fold up and back could result in death or serious injury. (00366a)**

3. Install a passenger footpeg (3) on the footpeg support bracket as shown using a clevis pin (5), spring washer (7), and retaining ring (6) from the kit.

#### Left Side

1. Remove and discard the hex socket head screw retaining the double-tube rear brake line clamp. Remove and discard the black plastic hole plug (A) in the lower hole. Repeat steps 2 and 3 for left side footpeg.

### SERVICE PARTS

See Figure 1 and Table 1.



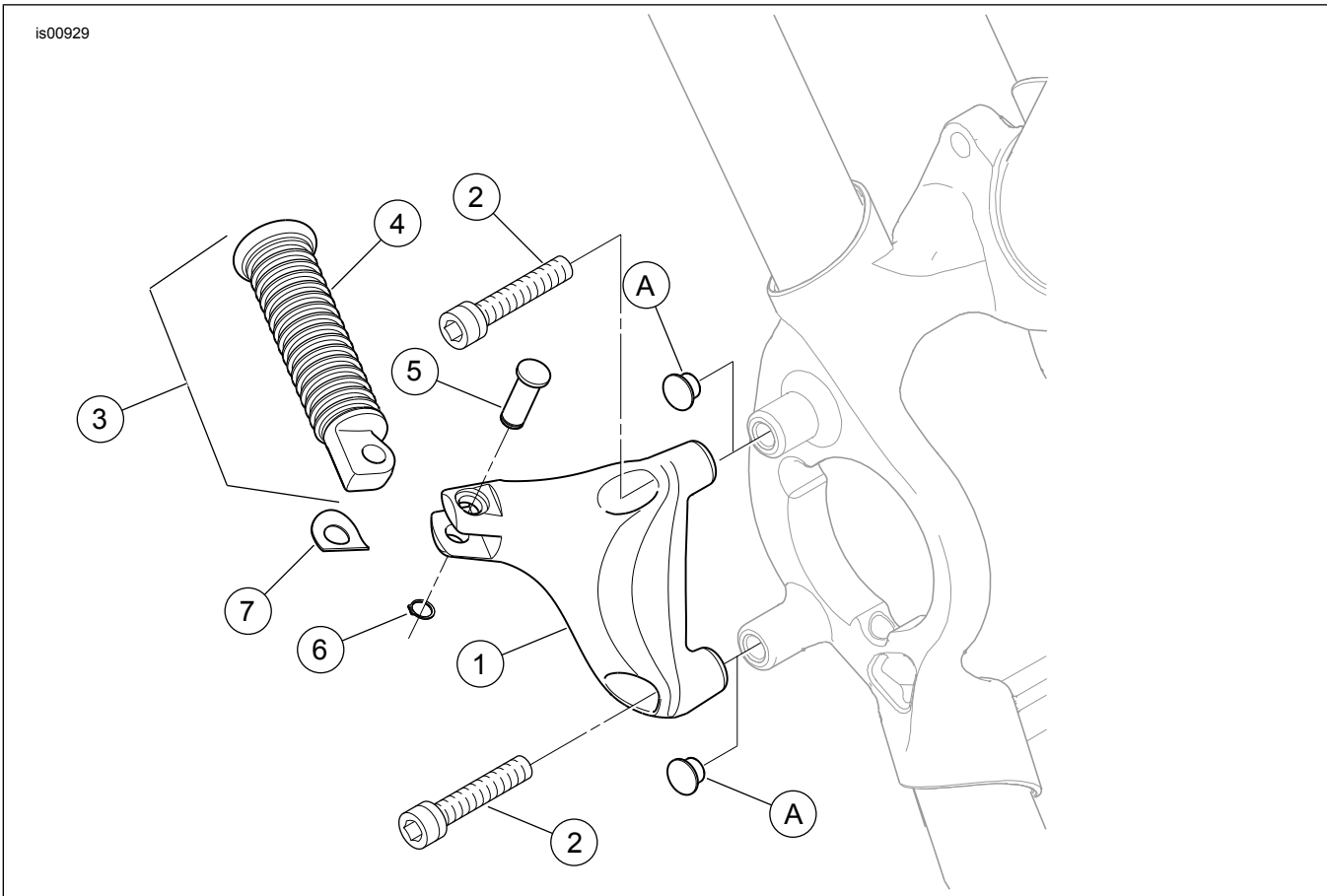


Figure 1. Service Parts: Passenger Footpeg Mounting Kit

Table 1. Service Parts Table

Item	Description (Quantity)	Part Number
1	Passenger footpeg bracket, right side (shown)	49314-04
	Passenger footpeg bracket, left side (not shown)	49315-04
2	Screw, hex socket head (4)	4748
3	Passenger footpeg (2)	33048-72
4	Rubber, footrest	33189-63
5	Clevis (2)	45041-01
6	Retaining ring	11304
7	Spring washer (2)	50912-72
<b>Items mentioned in text, but not included in kit:</b>		
A	Black plastic hole plug (2)	