



# INSTRUCTIONS

J02469

2006-11-01



## DYNA REAR AXLE-NUT COVER KIT

### GENERAL

#### Kit Number

44257-01, 44262-01

#### Models

For model fitment information, please see the P&A Retail Catalog or the Parts and Accessories section of [www.harley-davidson.com](http://www.harley-davidson.com) (English only).

#### Additional Parts Required

##### ⚠ WARNING

Rider and passenger safety depend upon the correct installation of this kit. Use the appropriate service manual procedures. If the procedure is not within your capabilities or you do not have the correct tools, have a Harley-Davidson dealer perform the installation. Improper installation of this kit could result in death or serious injury. (00333b)

##### NOTE

This instruction sheet references Service Manual information. A Service Manual for your model motorcycle is required for this installation and is available from a Harley-Davidson Dealer.

#### Kit Contents

See Figure 1 and Table 1.

### INSTALLATION

##### NOTE

Inside each axle-nut cover is a LH or RH inscription for the left-hand and right-hand side of the vehicle to which the covers fasten.

Axles that have been removed for service, replacement, or repair may have been assembled in reverse orientation from their stock design. Axle-nut covers may not fit properly on reversed axles. Refer to the service manual, for your model motorcycle, for correct axle orientation.

1. See Figure 1. Partially fasten a #10 set screw (5) into the threaded hole in each of the axle-nut cover spacers (3).
2. Position each spacer over an axle nut. Tighten the set screws to 3.4 N·m (30 in-lbs).
3. Partially fasten a 1/4-20 set screw (2) into the threaded hole in each axle-nut cover (1, 4).
4. Position each axle-nut cover over the spacer on the appropriate axle nut.

5. Adjust the position of the exhaust system as necessary to provide axle-nut clearance.
6. Tighten the axle-nut cover set screws to 7.9 N·m (70 in-lbs).

##### NOTE

The set screws in this kit are treated with a thread-locking compound. When replacing or re-installing the set screws (2, 5), apply Loctite® 243 (Blue) threadlocker, Harley-Davidson Part Number 99642-97, to the set-screw threads.

### SERVICE PARTS

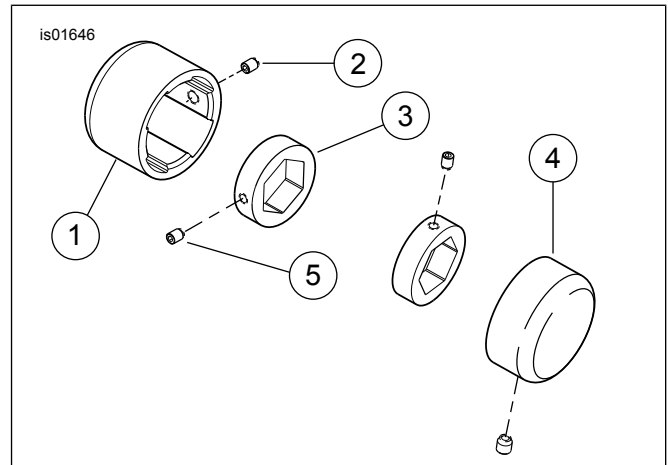


Figure 1. Service Parts: Dyna Rear Axle-Nut Cover Kit

Table 1. Service Parts: Dyna Rear Axle-Nut Cover Kit

Item	Description (Quantity)	Part Number
1	Axle-nut cover, left side	Not Sold Separately
2	Set screw, 1/4-20 x 1/4 inch (2)	3231B
3	Axle-nut spacer (2)	Not Sold Separately
4	Axle-nut cover, right side	Not Sold Separately
5	Set screw, 10-24 x 1/4 inch (2)	Not Sold Separately

