



INSTRUCTIONS

J03611

2007-08-20



FXCW DETACHABLE PASSENGER PILLION KIT

GENERAL

Kit Number

52959-08

Models

For model fitment information, please see the P&A Retail Catalog or the Parts and Accessories section of www.harley-davidson.com (English only).

Kit Contents

See Figure 2 and Table 1.

Required Parts

Separate purchase of solo support structure (kit number 53935-08), solo luggage rack kit (kit number 53957-08), passenger footpeg support kit (kit number 51039-05), (2) screw (part number 4454), (2) spring washer (part number 50912-72) and passenger footpegs (see P&A catalog) are required. Can be installed with passenger upright (kit number 52804-08) and backrest pad (kit number 51782-07) if purchased separately.

INSTALLATION

1. Install the solo support structure (4), luggage rack kit (7), upright (2) and backrest (1) following the instructions in the appropriate kit.
2. To install the pillion, center the pillion (3) over the luggage rack (7), ensuring the pillion levers (6) are parallel with the slots in the luggage rack.
3. With the pillion tipped slightly forward, lower the pillion hooks (5) through the rack slots and slide the pillion forward until hooks engage the indents in the underside of the luggage rack.
4. When the hooks are in place, lower the pillion onto the luggage rack and press down near the rear of the pillion so the pillion levers (6) are fully inserted through the slots.
5. Turn each lever outward until they are both perpendicular to the rack slots.

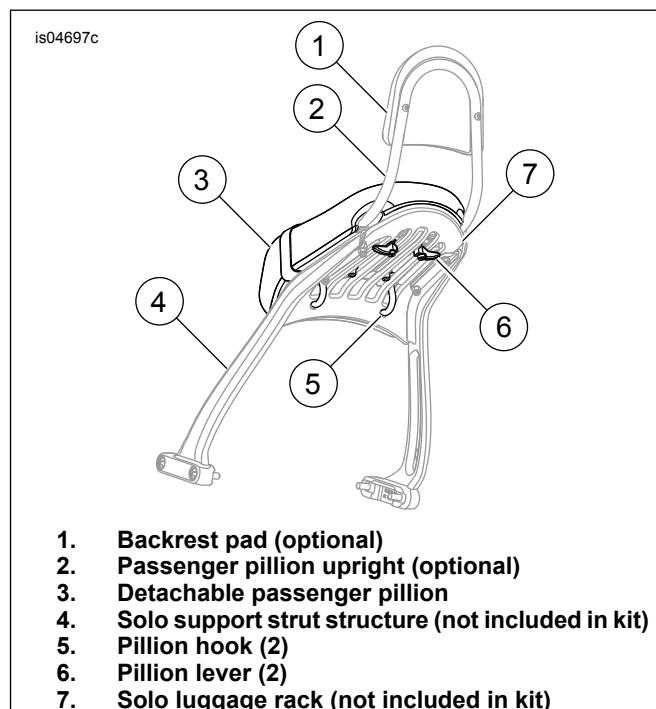


Figure 1. Rack and Pillion Assembly

Removal

1. Turn the levers so they are parallel with the slots in the rack.
2. Raise the rear of the pillion to disengage the pillion hooks from the indents.
3. Lift pillion off the luggage rack.

Service Parts

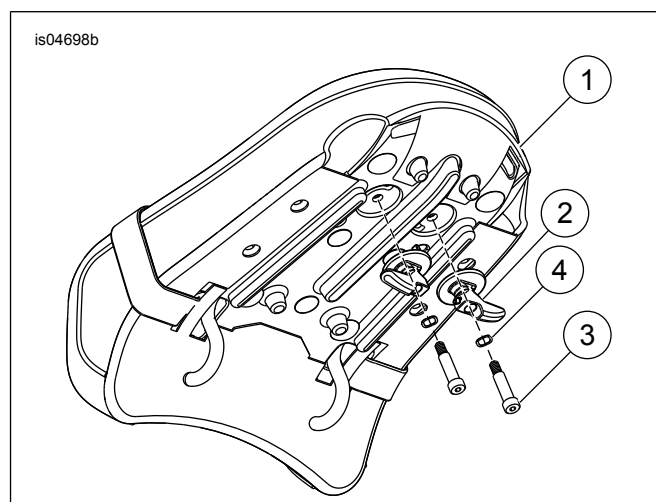


Figure 2. Service Parts: FXCW Detachable Passenger Pillion

Table 1. Service Parts: FXCW Detachable Passenger Pillion Kit

Item	Description (Quantity)	Part Number
1	Pillion Kit Includes Items 1 through 4	52959-08
2	Lever (2)	52639-08
3	Bolt, shoulder (2)	4675
4	Washer, wave (2)	52640-08