



INSTRUCTIONS

J03622

2005-05-17



SOFTAIL REAR AXLE NUT COVER KIT (BULLET STYLE)

GENERAL

Kit Number

48109-03A

Models

This Chrome Rear Axle Cover kit fits 1987 and later Softail models (except 2006 FXST, FXSTB, and FXSTS). This kit will not fit with Saddlebag kit numbers 91190-97, 90835-90C, 90119-00A, 91536-00A, 91537-00A, 90114-00 and 91555-01A.

Kit Contents

See Figure 3 and Table 1 for a list of kit contents.

⚠ WARNING

Rider and passenger safety depend upon the correct installation of this kit. Use the appropriate service manual procedures. If the procedure is not within your capabilities or you do not have the correct tools, have a Harley-Davidson dealer perform the installation. Improper installation of this kit could result in death or serious injury. (00333b)

NOTE

A Service Manual for your model motorcycle is available from your Harley-Davidson Dealer.

INSTALLATION

⚠ WARNING

Perform this installation when the engine is cool. Working on or near the exhaust system when the engine is hot could result in severe burns. (00311b)

1. Remove the Saddlebags if desired for extra working clearance. For original equipment (OE) bags, see SADDLEBAG REMOVAL in the Service Manual. For accessory saddlebags, refer to the appropriate kit instruction sheet.
2. See Figure 1. On one side of the motorcycle, loosen the jam nut (1). Remove the original axle adjustment bolt (2) and jam nut. Save the jam nut. The bolt can be discarded.
3. See Figure 2. Install the new axle adjustment bolt (1) through the swingarm frame (2) with approximately 1/4 inch of thread protruding past swingarm frame. Thread the saved jam nut (3) onto the new axle adjustment bolt but do not tighten jam nut against swingarm frame at this time.

NOTE

The mounting bracket has two angled milled surfaces (6). Insure that the angled milled surfaces are facing outward during installation.

4. Place the mounting bracket against the jam nut and thread the axle adjustment bolt through mounting bracket.

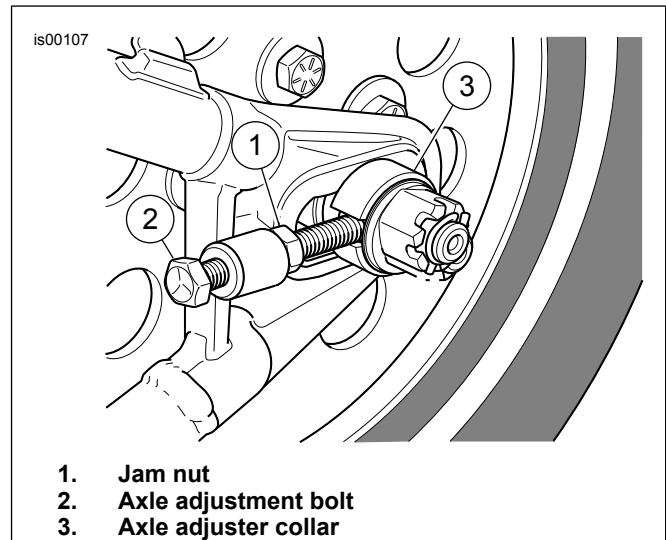


Figure 1. Rear Axle Hardware (Left Side)

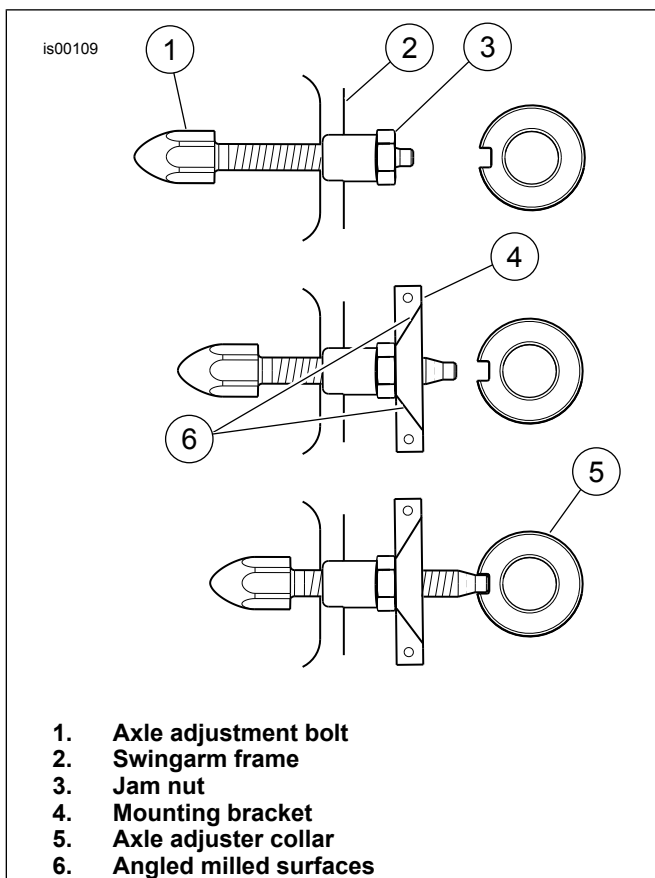


Figure 2. Installing New Components

5. Continue threading the axle adjuster bolt in until it is approximately in its original position and snug against the axle adjuster collar (5), but leave the jam nut and mounting bracket loose.
6. Repeat steps 1 through 5 for the opposite side.

⚠ WARNING

Check vehicle alignment according to following procedures. Incorrect alignment can adversely affect stability and handling, which could result in death or serious injury. (00287a)

7. Inspect rear wheel alignment. Check that the center of the rear axle is equidistant from the center of the swing arm pivot shaft on each side. The measurements must be equal within 1/32 inch (0.794 mm). Adjust as necessary. See **VEHICLE ALIGNMENT** in Service manual.
8. Inspect and if necessary, adjust the rear belt tension. See **REAR BELT DEFLECTION** in the Service Manual.
9. Inspect and if necessary, adjust the rear belt tension. See **REAR BELT DEFLECTION** in the Service Manual.
10. See Figure 2. Tighten the jam nut (3) against the swingarm frame lug (not cover bracket) on both sides of axle.
11. See Figure 3. The axle nut covers are side-specific. Select an axle nut cover (1) from the kit. Place the cover over the mounting bracket (3) with the axle adjuster screw cutout at the front as shown.
12. Line up the mounting holes, and install the cover with two washers (5) and two screws (4) from the kit. Fasten securely. Repeat for the opposite side.

NOTICE

Wipe all fingerprints off of exhaust system components after installation and before starting engine. Oil from hands can leave permanent marks on exhaust system finish. (00346a)

13. Re-install the Saddlebags if removed earlier. For original equipment (OE) bags, see **SADDLEBAG INSTALLATION** in the Service Manual. For accessory saddlebags, refer to the appropriate kit instruction sheet.

SERVICE PARTS

See Figure 3 and Table 1.

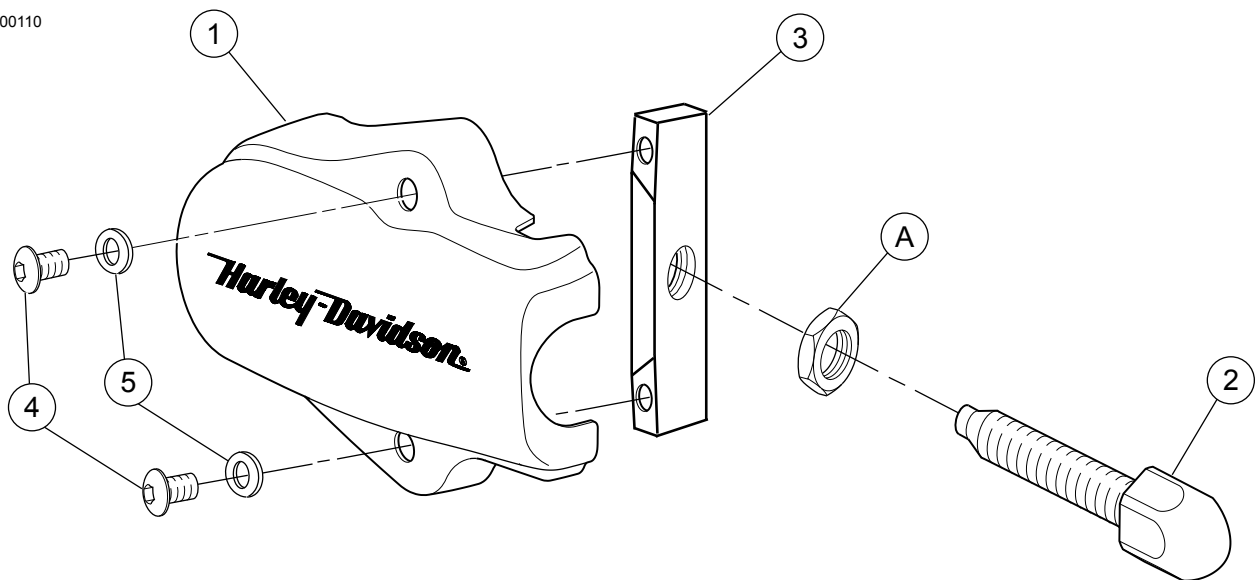


Figure 3. Service Parts: Softail Rear Axle Nut Cover Kit (Bullet Style)

Table 1. Service Parts: Softail Rear Axle Nut Cover Kit (Bullet Style)

| Kit | Item | Description (Quantity) | Part Number |
|-----------|------|---|---------------------|
| 48109-03A | 1 | Cover, rear axle (right, shown) | Not Sold Separately |
| | | Cover, rear axle (left, not shown) | Not Sold Separately |
| | 2 | Adjuster, threaded (2) | 47627-03 |
| | 3 | Bracket, mounting (2) | 48111-04 |
| | 4 | Screw, hex socket, #10-24 x 1/2 in. (4) | 3051 |
| | 5 | Washer, #10 (2) | 6150W |
| | 6 | Nut, jam | Reference Only |