



# INSTRUCTIONS

J03845

2009-06-23



## SPORTSTER LEATHER SADDLEBAG KIT

### GENERAL

#### Kit Number

53050-04C

#### Models

For model fitment information, see the P&A Retail Catalog or the Parts and Accessories section of [www.harley-davidson.com](http://www.harley-davidson.com) (English only).

#### Additional Parts Required

This kit requires the separate purchase of a Turn Signal Relocation Kit 60215-06 or 68732-02A for domestic and 68733-02A for international.

#### ⚠ WARNING

**Do not exceed saddlebag weight capacity. Put equal weight in each bag. Too much weight in saddlebags can cause loss of control, which could result in death or serious injury. (00383a)**

#### NOTE

Maximum saddlebag weight is 7 pounds (3.2 Kg) for each bag.

#### ⚠ WARNING

**Rider and passenger safety depend upon the correct installation of this kit. Use the appropriate service manual procedures. If the procedure is not within your capabilities or you do not have the correct tools, have a Harley-Davidson dealer perform the installation. Improper installation of this kit could result in death or serious injury. (00333b)**

#### NOTE

*This instruction sheet references service manual information. A service manual for your model motorcycle is required for this installation and is available from a Harley-Davidson Dealer.*

### Kit Contents

See Figure 2 and Table 1.

### INSTALLATION

#### ⚠ WARNING

**To prevent accidental vehicle start-up, which could cause death or serious injury, disconnect negative (-) battery cable before proceeding. (00048a)**

1. Refer to the service manual and follow the instructions given to remove the seat, and disconnect the negative battery cable. Save seat mounting hardware for later use.

2. Properly support motorcycle under frame with stand or suitable blocking to prepare for addition of saddlebags.
3. See Figure 1. Remove and discard front and rear button head screws (1), two locknuts (2) and under fender clip nuts (3) from the left and right rear fender support covers (4).

#### NOTE

*Rear turn signals must be relocated to new turn-signal bar on the rear license plate bracket.*

4. Follow the instructions provided with the Turn Signal Relocation Kit to relocate the rear turn signals.

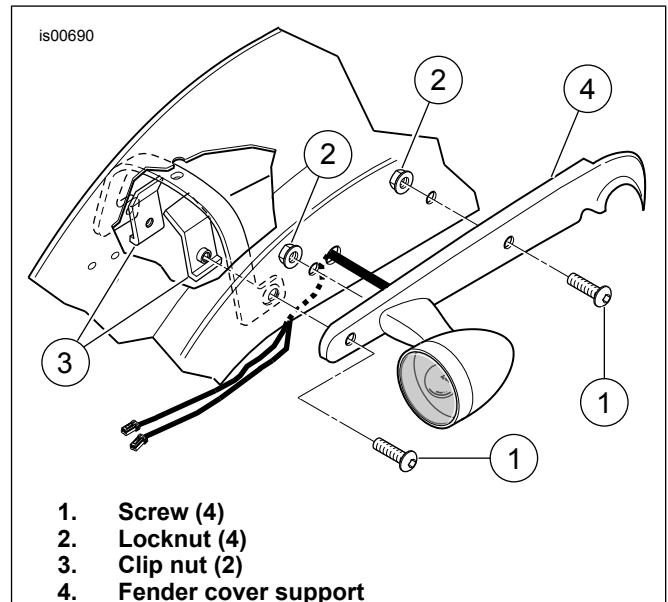


Figure 1. Rear Fender Support Removal

5. See Figure 2. From the underside of the fender, install two bolts (6) from kit through the fender and into the fender support (A) and cover (B), where the two button head screws were previously removed in Step 3.
6. Install the short bushing (12) onto the front bolt (short end toward saddlebag) and the long bushing (11) onto the rear bolt (short end toward saddlebag).
7. Slide the saddlebag onto the bolts until bushings are seated onto the saddlebag bracket.
8. Thread flange locknuts (7) to bolts on the inside of the saddlebag. Tighten both flange locknuts to 24-27 ft-lbs (33-37 Nm).
9. Install a thread protector cap (8) onto each of the bolt ends.

## Install Reflectors

### ▲ WARNING

Federal Motor Vehicle Safety Standard (FMVSS) 108 requires motorcycles to be equipped with rear and side reflectors. Be sure rear and side reflectors are properly mounted. Poor visibility of rider to other motorists can result in death or serious injury. (00336b)

1. Measure approximately 1-1/2 in (38 mm) from the bottom edge of the saddlebag. Orient the reflector horizontally and carefully center the reflector mount between the straps of bags with straps or locate it at the rearward portion of bags without straps.
2. See Figure 2. Position reflector mount (14) on saddlebag.
3. Mark holes on saddlebag with pen (or other appropriate tool).
4. Using soapy water, clean the surface where reflector will be installed.
5. Allow the surface to dry completely before continuing.
6. Using appropriate tool, make two 3/16 inch holes in saddlebag.
7. Install reflector mount (14) on saddlebag using two push nuts (15).
8. Remove backing from adhesive on reflector (16) and install on mount (14).
9. Let the adhesive cure for at least 24 hours at no less than 60°F (16°C).

## SERVICE PARTS

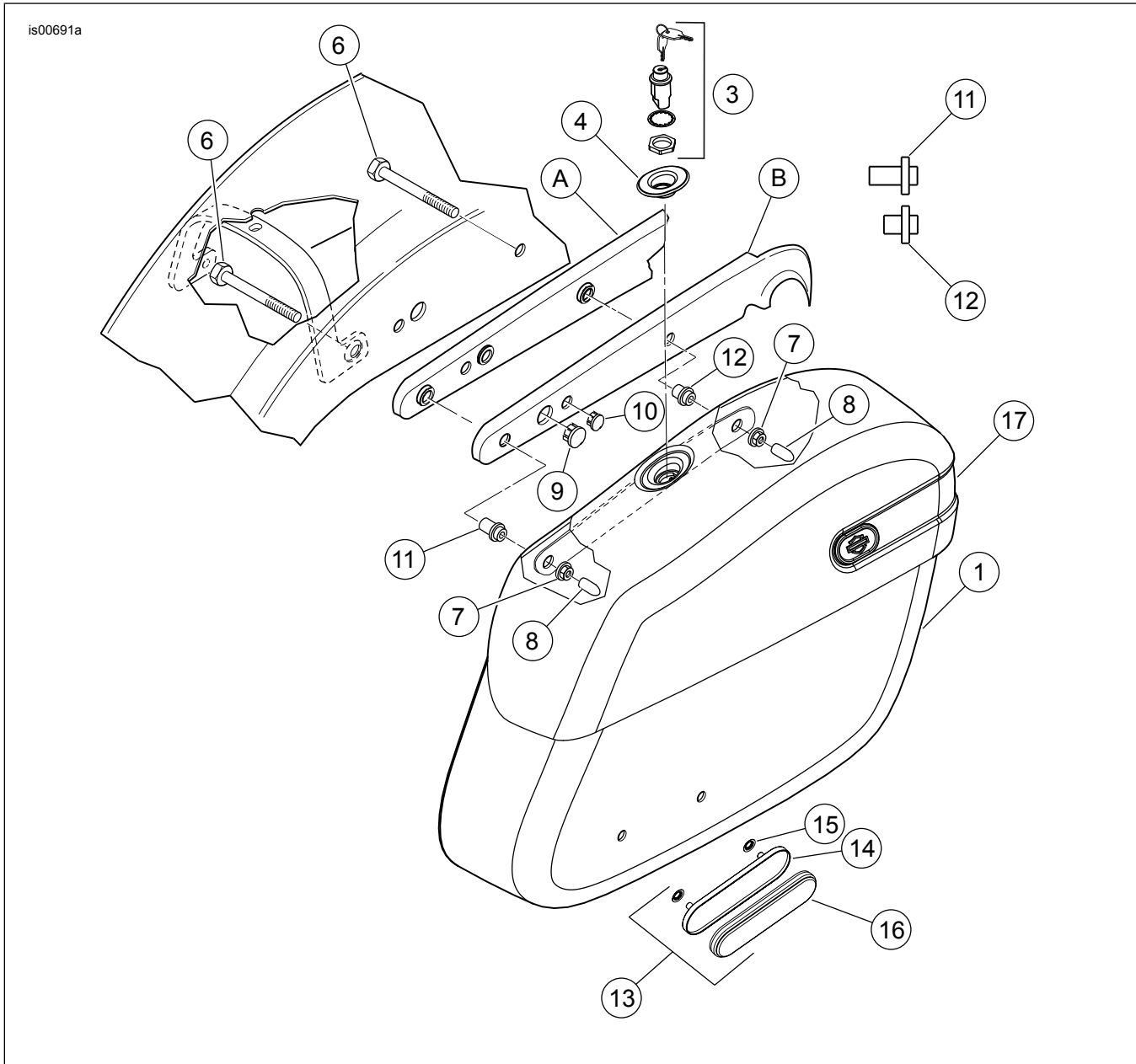


Figure 2. Service Parts: Sportster Rigid Leather Saddlebag Kit (right side shown)

**Table 1. Service Parts: Sportster Rigid Leather Saddlebag Kit**

<b>Item</b>	<b>Description (Quantity)</b>	<b>Part Number</b>	<b>Item</b>	<b>Description (Quantity)</b>	<b>Part Number</b>
1	Saddlebag without lock, right	53099-04A	9	Plug, 0.40 in. hole (2)	53377-04
2	Saddlebag without lock, left (not shown)	53113-04A	10	Plug, 0.35 in. hole (2)	68446-00
3	Lock assembly (2) (includes keys)	51557-00A	11	Bushing, rear, long	53021-04
4	Bezel, right	53126-04A	12	Bushing, front, short	53022-04
5	Bezel, left (not shown)	53131-04A	13	Kit, reflector (items 14-16)	59480-04A
6	Screw, Hex head, 5/16-18 x 3 in. (4)	4375	14	Mount, reflector	Not sold separately
7	Locknut, flange 5/16-18 (4)	7531	15	Pushnut, reflector mount (2)	8126A
8	Cap, thread protector (4)	Not sold separately	16	Reflector, red	59270-10
A	Frame fender support	Not part of kit	17	Ornament kit	53124-04
B	Frame fender support cover	Not part of kit			