



INSTRUCTIONS

J03711

2009-04-06



RIGID MOUNT SIDEPLATE KIT

GENERAL

Kit Number

53020-06A

Models

For model fitment information, see the P&A Retail Catalog or the Parts and Accessories section of www.harley-davidson.com (English only).

Additional Parts Required

Loctite[®] 243 (blue) (99642-97) is required for installation and is available from a Harley-Davidson Dealer.

Loctite[®] 271 (red) (99671-97) is required for installation and is available from a Harley-Davidson Dealer.

Kit Contents

Table 1. Kit Contents

Description (Quantity)	Part Number
Sideplate, right	Not Sold Separately
Sideplate, left	Not Sold Separately
1/4-20 x 5/8 inch screw (4)	94592-98
3/16-16 x 1-1/4 inch screw (2)	3171

NOTE

When performing this installation, be careful not to scratch painted or chrome surfaces.

INSTALLATION

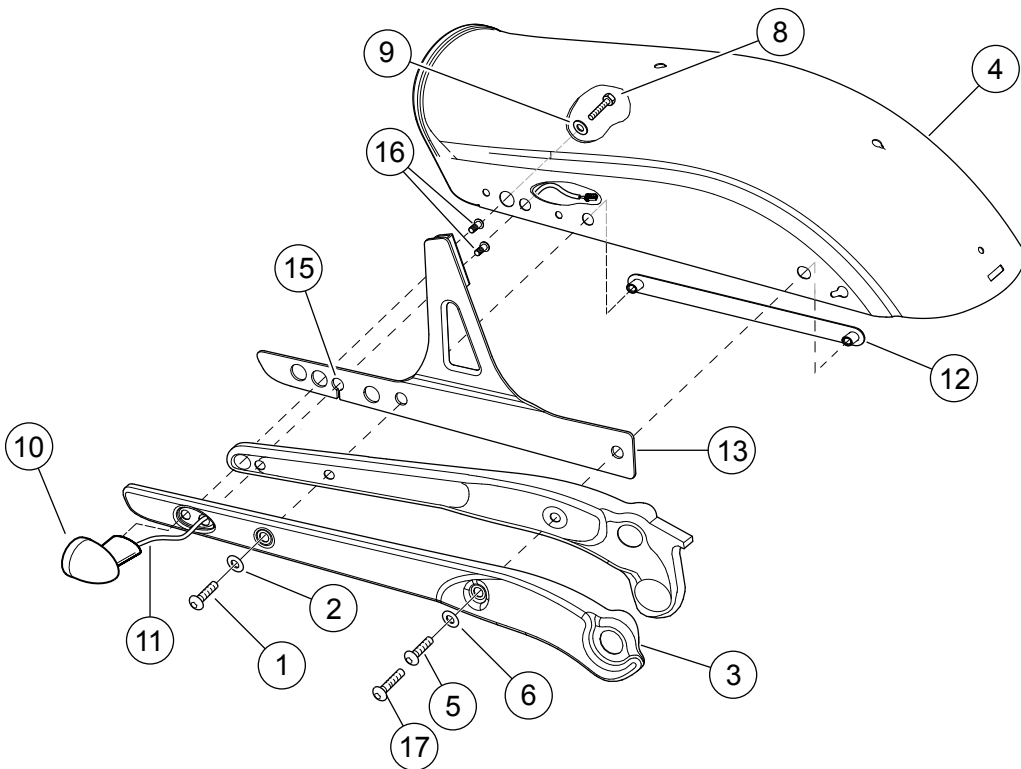
NOTE

To allow access to the fasteners on the underside of the fender, raise the motorcycle on a motorcycle lift.

Complete the following procedures on one side of the motorcycle before starting the other side.

1. See Figure 1. Remove the rearmost screw (1) and flat washer (2) securing the fender strut cover (3, 7).

2. Remove the forward screw (5) and flat washer (6) securing the fender strut cover (3, 7) and fender (4) to the nut plate (12). **For 2010 FXDF Models Only:** Discard screw (5).
3. Remove the 5/16 inch screw (8) and flat washer (9) securing the rear turn signal (10) from the inside of the fender. The turn signal will remain loosely attached to the motorcycle by the wire harness.
4. Slide the sideplate (13 or 14) into position between the fender strut cover (3 or 7) and fender (4). Insert the turn signal wire harness (11) into the slotted hole in the sideplate (15). Align the holes in the sideplate cover with the holes in the strut and nut plate (12).
5. **For 2010 FXDF Models Only:** Apply Loctite[®] 243 (blue) to the screw threads (1, 17). Install the forward fender attaching screw (17) and flat washer (6) through the fender strut cover (3), strut, sideplate (13), fender (4) and into the nut plate (12). Hand-tighten. While holding the sideplate in position, install the rear most screw (1), flat washer (2) and hand-tighten. **For All Other Models:** Apply Loctite[®] 243 (blue) to the screw threads (1, 5). Install the forward fender attaching screw (5) and flat washer (6) through the fender strut cover (3), strut, sideplate (13), fender (4) and into the nut plate (12). Hand-tighten. While holding the sideplate in position, install the rear most screw (1), flat washer (2) and hand-tighten.
6. Apply Loctite[®] 243 (blue) to screw (8). From the inside of fender, install screw (8) and flat washer (9) through fender (4), sideplate (13), strut, fender strut cover (3) and into the turn signal (10). Tighten screw to 16.3–21.7 N·m (12–16 ft-lbs).
7. Repeat Steps 1-6 on the other side of motorcycle.
8. Apply Loctite[®] 271 (red) to screws (16). Attach uprights to sideplates using 1/4-20 x 5/8 inch screws (16). Tighten screws to 13.5 N·m (10 ft-lbs).
9. Tighten all four (left and right side) fender strut cover screws (1, 5 or 17) to 16.3–24.4 N·m (12–18 ft-lbs).



- | | |
|--|---|
| 1. Screw, 3/8-16 x 1-3/8 inch button head | 10. Rear turn signal |
| 2. Washer, 3/8 inch | 11. Turn signal wiring harness |
| 3. Fender strut cover, right side | 12. Nut plate |
| 4. Fender | 13. Sideplate, right (from kit) |
| 5. Screw, 3/8-16 x 1 inch button head | 14. Sideplate, left (not shown) (from kit) |
| 6. Washer, 3/8" | 15. Side plate slotted hole |
| 7. Fender strut cover, left side (not shown) | 16. Screw, 1/4-20 x 5/8 inch (4) (from kit) |
| 8. Screw, 5/16-18 x 3-5/8 inch hex head | 17. Screw, 3/8-16 x 1-1/4 inch button head (2010 FXDF only) |
| 9. Flat washer, 5/16 inch | |

Figure 1. Sideplate Installation