



# INSTRUCTIONS

J04129

2006-10-24



## DETACHABLE SADDLEBAG LOWER SUPPORT ARM KITS

### GENERAL

#### Kit Number

88258-07, 88259-07, 88260-07, and 88262-07

#### Models

These kits are for replacement of lower support arms on Softail Detachable Saddlebag Kits 88237-07 and 88238-07.

**Table 1. Lower Support Arm Kits and Saddlebag Kits**

| Lower Support Arm Kit | Detachable Saddlebag Kit | Right Arm or Left Arm |
|-----------------------|--------------------------|-----------------------|
| 88258-07              | 88237-07                 | Right Arm             |
| 88259-07              | 88237-07                 | Left Arm              |
| 88260-07              | 88238-07                 | Right Arm             |
| 88262-07              | 88238-07                 | Left Arm              |

#### Additional Parts Required

Loctite® 243 Threadlocker and Sealant - Blue (99642-97) is available from a Harley-Davidson dealer.

#### Kit Contents

See Figure 3 and Table 3.

### REMOVAL

1. Remove saddlebag from vehicle.
2. See Figure 3. Remove and discard three screws (1), split lockwashers (2), and flat washers (3) from inside saddlebag.
3. Remove existing lower support arm (4, 5) from back of saddlebag.
4. Using soapy water or isopropyl alcohol, thoroughly clean surface on back of saddlebag where new lower front arm will be installed.
5. Allow the surface to dry completely before installing kit.

### INSTALLATION

#### Install Lower Support Arms

1. See Figure 3. Apply Loctite 243 (Blue) to threads of screws (1).

#### NOTE

*Installation of saddlebag (including saddlebag adjustments) needs to be done one side at a time to prevent the Loctite from curing prematurely.*

2. Loosely install lower support arm (4, 5) on one saddlebag at a time using three flat washers (3), split lockwashers (2), and screws (1). The lower support arm fits in the recess on the back of saddlebag. The hardware mounts the arm from inside the saddlebag.
3. See Figure 3. Open saddlebag.
4. Pull on knob (A) (located in upper rear corner inside saddlebag) and rotate it towards rear of saddlebag (clockwise for L.H. saddlebag, counterclockwise for R.H. saddlebag).
5. See Figure 1 and See Figure 3. Approach the motorcycle with the saddlebag tipped slightly forward, then:
  - a. Insert large diameter of keyhole end of lower support arm (4, 5) over lower front docking point.
  - b. Insert upper docking point slots (6) in saddlebag rear bracket (8) onto upper front and rear docking points.

#### NOTE

*The thickness of the end of the lower support arm should engage in the reduced diameter plastic groove of the docking point at the lower front docking point location.*

6. *FL Outer and FX Outer configurations:* See Table 2. Swing body of saddlebag down so the outer mini docking points, which are stacked on top of the standard docking points on fender support cover (strut cover), slide into upper docking point slots of saddlebag rear bracket. *FL Inner, FX Inner, FL Rigid, FX Rigid, and FXSTC configurations:* See Table 2. Swing body of saddlebag down so the standard docking points on fender support cover (strut cover), slide into upper docking point slots of saddlebag rear bracket.
7. See Figure 1. Slide the saddlebag forward on the bike making sure it is fully seated on all three docking points.

#### NOTE

*There are two possible adjustments for ensuring the saddlebag arm is properly seated at the lower front docking point and is far enough forward so the latch functions properly.*

- *Adjust the arm position prior to tightening the arm mounting screws.*
- *Loosen the lower front docking point bracket, adjust the docking point position, and retighten.*

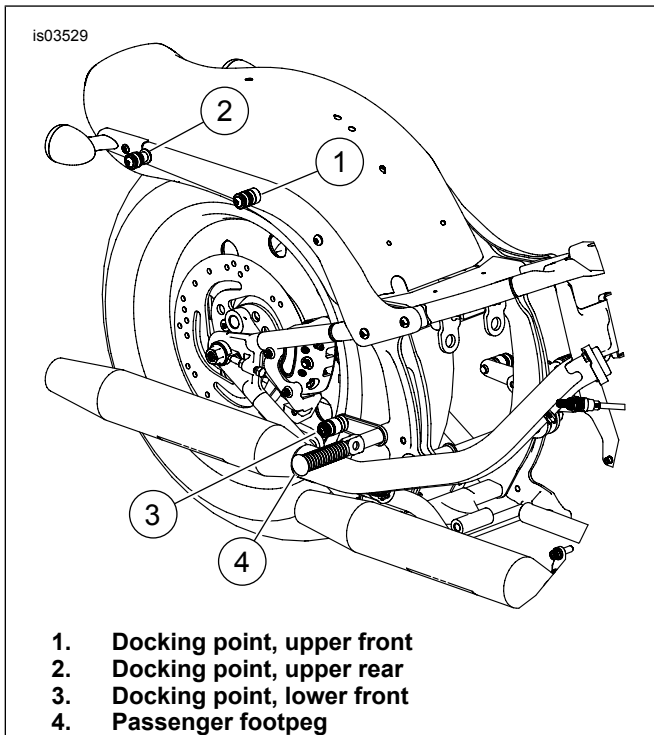
*Since this kit is for the replacement of existing arms, the arm adjustment should be the only adjustment necessary.*

*After performing the arm adjustment and tightening sequence below, if the saddlebag is still not able to be*



moved far enough forward for the latch to function properly, then the lower front docking point must also be adjusted.

b. If this is the case, proceed to "Adjust Lower Front Docking Point" subtopic.



1. Docking point, upper front
2. Docking point, upper rear
3. Docking point, lower front
4. Passenger footpeg

**Figure 1. Docking Points and Passenger Footpeg**

8. Make sure lower front docking point is fully seated into the smaller diameter of the saddlebag lower support arm keyhole slot (7).
  - a. Move the lower support arm fore/aft and up/down prior to final tightening in order to get it fully seated, or as close as possible to being fully seated, on the lower front docking point.
  - b. Tighten the three lower support arm screws to 60-90 **in-lbs** (6.8-10.2 Nm).
9. Once again, with saddlebag positioned all the way forward on the bike, make sure it is fully seated on all three docking points.
10. With the saddlebag as far forward as possible:
  - a. Rotate the latch knob (A) toward the front of the saddlebag (counterclockwise for L.H. saddlebag, clockwise for R.H. saddlebag). If saddlebag is seated properly, the knob should pop back in when the latch (D) closes.
  - b. Look behind the saddlebag and make sure that the latch is in the closed position.
11. If adjustment and final tightening of the arm still do not provide the alignment necessary to slide the saddlebag fully forward so the latch (D) can function properly:
  - a. Lower front docking point may require some adjustment to obtain the necessary alignment.

**Table 2. Softail Detachable Saddlebag Configurations**

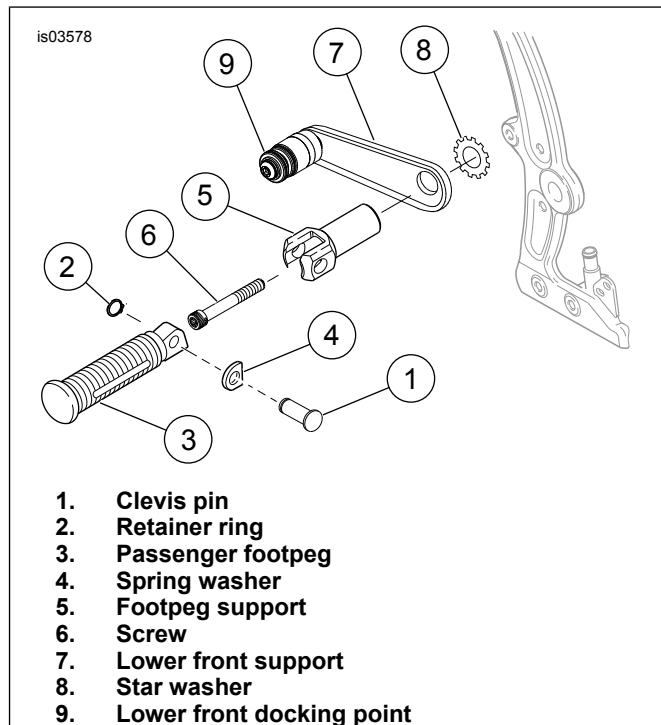
| Kit      | Short Description | Accessory Configuration (Long Description)   |
|----------|-------------------|--|
| 88237-07 | FL Outer          | 2003-Later FLST/C and 2003-2005 FX Softail Models (Except FXSTD) <i>With</i> Other Detachable Accessories    |
|          | FL Inner          | 2003-Later FLST/C and 2003-2005 FX Softail Models (Except FXSTD) <i>Without</i> Other Detachable Accessories |
|          | FL Rigid          | 2003-Later FLST/C and 2003-2005 FX Softail Models (Except FXSTD) <i>With</i> Rigid-Mounted Accessories       |
| 88238-07 | FX Outer          | 2006-Later FX Models (Except FXSTD) <i>With</i> Other Detachable Accessories                                 |
|          | FX Inner          | 2006-Later FX Models (Except FXSTD) <i>Without</i> Other Detachable Accessories                              |
|          | FX Rigid          | 2006-Later FX Models (Except FXSTD) <i>With</i> Rigid-Mounted Accessories                                    |
|          | FXSTC Stock       | 2007-Later FXSTC Models <i>With</i> Stock Passenger Upright  |

### Adjust Lower Front Docking Point (If Necessary)

1. See Figure 2. With saddlebag still installed, remove clevis pin (1) and retainer ring (2) securing passenger footpeg (3) and spring washer (4) to footpeg support (5).

**NOTE**

*On some Softail models, the passenger footpeg is secured with screw, spring washer, and locknut.*



1. Clevis pin
2. Retainer ring
3. Passenger footpeg
4. Spring washer
5. Footpeg support
6. Screw
7. Lower front support
8. Star washer
9. Lower front docking point

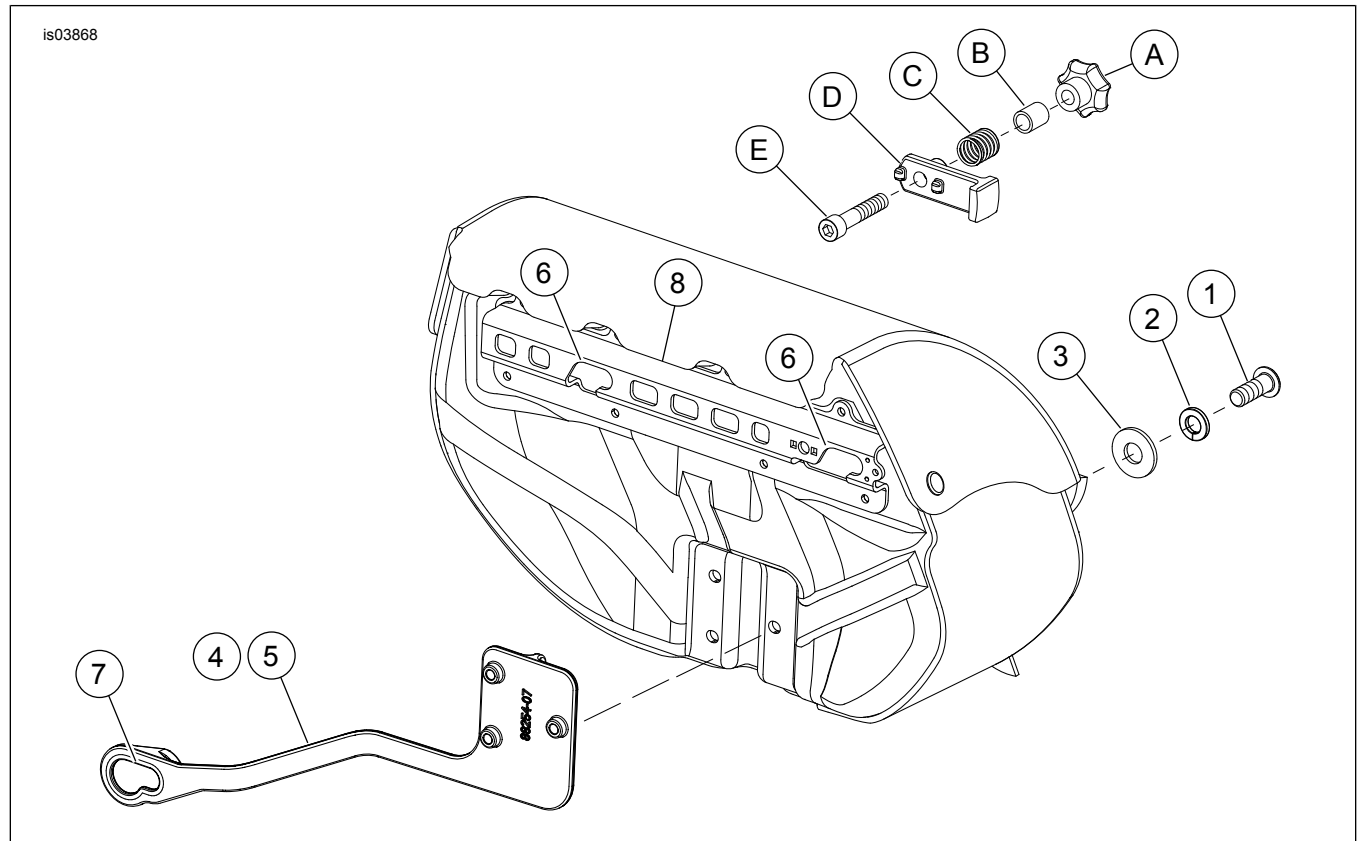
**Figure 2. Install Passenger Footpeg**

2. Remove screw (6) that fastens footpeg support to motorcycle frame, using an extended T-50 TORX® drive head. Clean existing Loctite from screw threads.
3. Insert screw (6) through footpeg support (5) and through large hole in lower front support (7).
4. Place star washer (8) onto screw on frame side of lower front support (7), and apply Loctite 243 (Blue) to remaining exposed screw threads.
5. Thread screw (6) into hole in motorcycle frame, but do not tighten at this time.
6. Rotate lower front support (7) so that the lower front docking point is fully seated into the smaller diameter of the saddlebag lower support arm keyhole slot ( Figure 3, Item 7).
7. Rotate the footpeg support (5) so the footpeg slot angles up toward the rear at a 10-15° angle from vertical.
8. While holding lower front support (7) to prevent rotation, tighten screw (6) to 35-45 ft-lbs (47.5-61.0 Nm) using an extended T-50 Torx drive head.
9. Install passenger footpeg on footpeg support using clevis pin (1), spring washer (4), and retainer ring (2).

**NOTE**

*On some Softail models, the passenger footpeg is secured with screw, spring washer, and locknut. The spring washer goes between the jaws of the footpeg support along with the mounting end of the footpeg. Tighten locknut to 10-16 ft-lbs (13.6-21.7 Nm).*

**SERVICE PARTS**



**Figure 3. Service Parts: Detachable Saddlebag Lower Support Arm Kits**

**Table 3. Service Parts: Detachable Saddlebag Lower Support Arm Kits**

| Item   | Description (Quantity)               | Part Number         |
|--|--------------------------------------|---------------------|
| 1  | Screw, 5/16-18 x 7/8 in. (3)         | 4359                |
| 2  | Lockwasher, split 5/16 in. (3)       | 7041                |
| 3  | Washer, support arm (3)              | 6333                |
| 4  | Arm, lower support, R.H. (Shown)     | Not Sold Separately |
| 5  | Arm, lower support, L.H. (Not Shown) | Not Sold Separately |
| 6  | Upper docking point slots            | Reference Only      |
| 7  | Lower support arm keyhole slot       | Reference Only      |
| 8  | Saddlebag rear bracket               | Not Sold Separately |
| <b>Items mentioned in text, but not included in kit:</b> |                                      |                     |
| A  | Knob, latch                          |                     |
| B  | Spacer, tube (red)                   |                     |

**Table 3. Service Parts: Detachable Saddlebag Lower Support Arm Kits**

| <b>Item</b> | <b>Description (Quantity)</b> | <b>Part Number</b> |
|-------------|-------------------------------|--------------------|
| C           | Spring, compression           |                    |
| D           | Latch                         |                    |
| E           | Screw, 1/4-20 x 1-1/4 in.     |                    |