



INSTRUCTIONS

J02768

2009-06-03



TOURING MUSTACHE ENGINE GUARD

GENERAL

Kit Number

49155-05B

Models

For model fitment information, see the P&A Retail Catalog or the Parts and Accessories section of www.harley-davidson.com (English only).

Additional Parts Required

⚠ WARNING

Rider and passenger safety depend upon the correct installation of this kit. Use the appropriate service manual procedures. If the procedure is not within your capabilities or you do not have the correct tools, have a Harley-Davidson dealer perform the installation. Improper installation of this kit could result in death or serious injury. (00333b)

NOTE

A service manual for your model motorcycle is required for this installation and is available from a Harley-Davidson Dealer.

Kit Contents

See Figure 5 and Table 1.

⚠ WARNING

If Equipped: Front and/or rear guards are not intended to provide protection from bodily injury in a collision with another vehicle or any other object. (00022d)

REMOVAL

1. See Figure 2 and Figure 3. Remove and discard two TORX® screws and flanged locknuts to release ends of stock engine guard from frame weldments.
2. See Figure 4. Remove and discard hex socket head screw and flat washer to release tab at top of engine guard from slot at base of steering head.
3. See Figure 1. Remove stock engine guard from frame weldments and base of steering head.

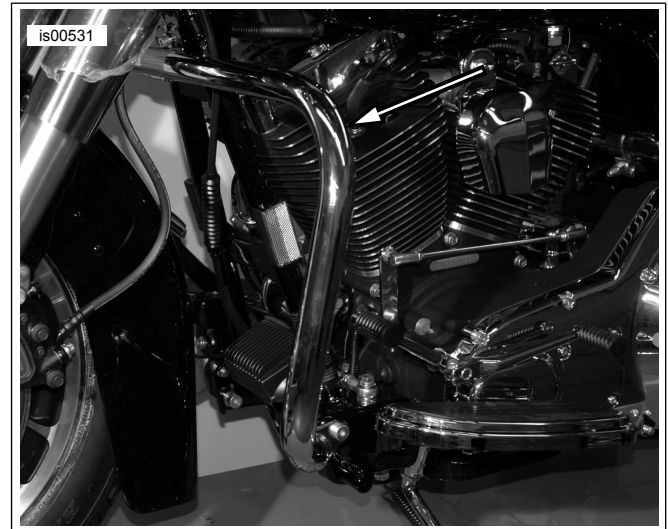


Figure 1. Stock Engine Guard (left side shown)



Figure 2. TORX Screw Removal (left side shown)

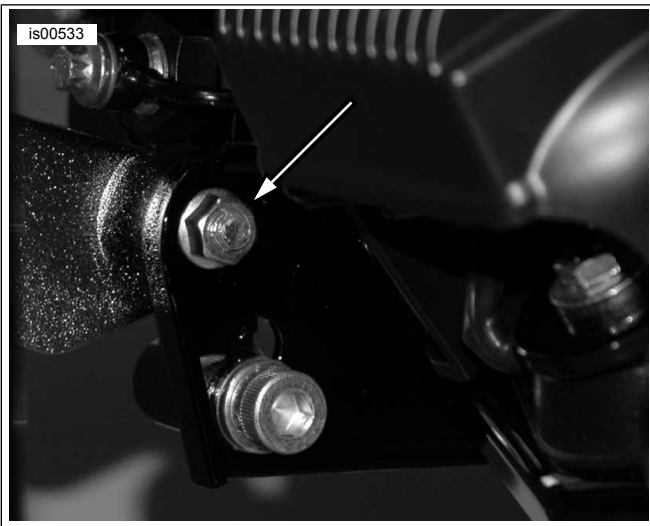


Figure 3. Flanged Locknut Removal (right side shown)



Figure 4. Hex Socket Head Screw and Washer Removal

INSTALLATION

1. See Figure 5 and Table 1. Insert tab at top of mustache engine guard (1) into slot at base of steering head.
2. Install hex socket head screw (2) and flat washer (3) to attach mustache engine guard. Tighten finger-tight.
3. Position end of mustache engine guard outboard of frame weldments on each side of motorcycle.
4. Install two pan head tapping screws (4) and flanged locknuts (5) to attach mustache engine guard on inboard side of frame weldments.
5. Alternately tighten three screws to 20.3–27.1 N·m (15–20 ft-lbs).

SERVICE PARTS

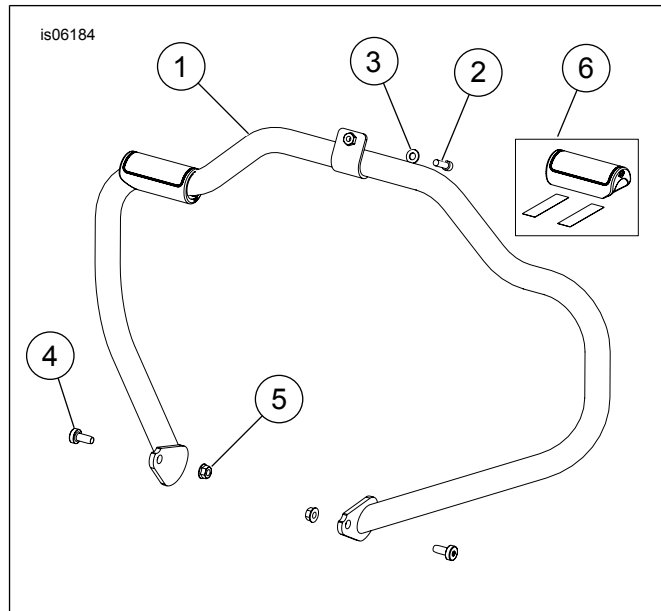


Figure 5. Service Parts: Mustache Engine Guard

Table 1. Service Parts: Touring Mustache Engine Guard Kit

Item	Description (Quantity)	Part Number
1	Mustache engine guard	Not Sold Separately
2	Hex socket head screw (2)	2708A
3	Flat washer, Type A	6702
4	Pan head tapping screw (2)	3678
5	Flanged nut (2)	7601
6	Rubber pad service kit (2)	97015-09
	<ul style="list-style-type: none"> • Rubber foot pad (2) • Adhesive tape (4) • Installation pin (2) 	
7	Warning label, engine guard (not shown)	14148-86