



# INSTRUCTIONS

J03853

2005-06-27



## DYNA REAR AXLE COVER KIT

### GENERAL

#### Kit Number

44346-06

#### Models

This kit fits 2006 Dyna models. This kit does not fit on motorcycles equipped with saddlebags.

### Kit Contents

See Figure 1 and Table 1.

### INSTALLATION

1. Place axle covers in position over ends of swingarm with the deeper cover on the left side (covering the axle nut).
2. Fasten the clamping bars (3) to the backs of the covers using hex-head screws (5) and Belleville washers (4), securing the covers to the swingarm. Tighten the hex-head screws to 2.4–3 N·m (21–27 in-lbs). Do not overtighten

### SERVICE PARTS

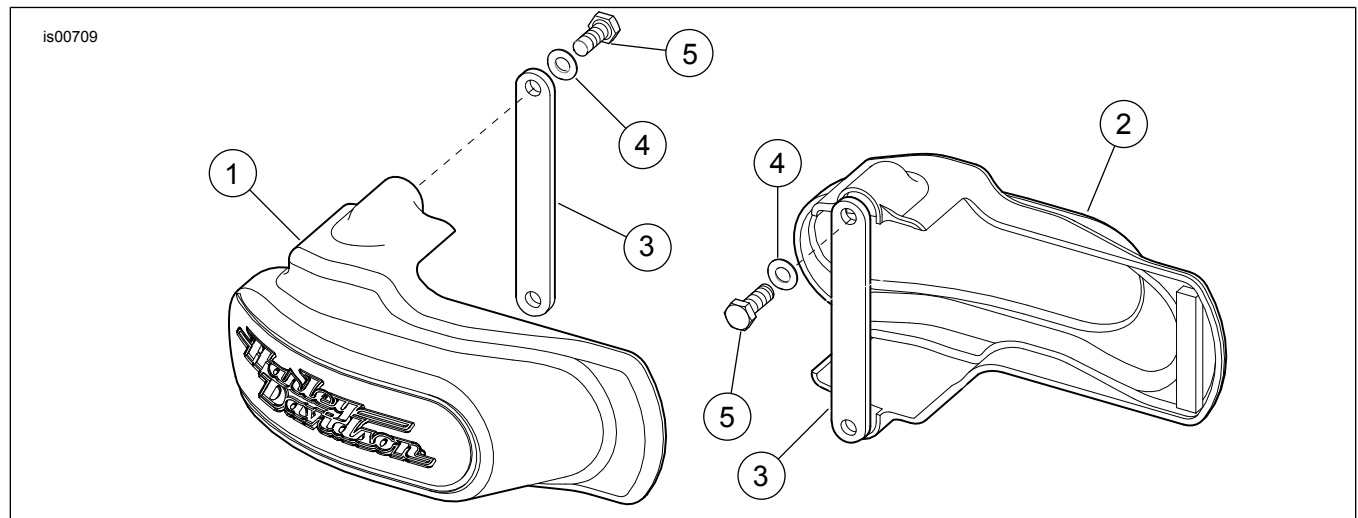


Figure 1. Service Parts: Dyna Swingarm Axle Cover

Table 1. Service Parts Table

Item	Description (Quantity)	Part Number	Item	Description (Quantity)	Part Number
1	Axle cover, left side	Not Sold Separately	4	Washer, Belleville (4)	45159-97
2	Axle cover, right side	Not Sold Separately	5	Screw, #10-24 x 1/2 inch (4)	3644
3	Clamping bar (2)	Not Sold Separately			