



# INSTRUCTIONS

J03978

2013-07-31



## SOFTAIL OIL COOLER KIT WITH CHROME OIL COOLER COVER

### GENERAL

#### Kit Number

26157-07A

#### Models

For model fitment information, See the P&A Retail Catalog or the Parts and Accessories section of [www.harley-davidson.com](http://www.harley-davidson.com) (English only).

- This kit fits motorcycles equipped with a Bullet Softail Spoiler (57039-YYXXX).
- This kit fits motorcycles equipped with an engine guard.
- This kit **does not** fit motorcycles equipped with a Softail Spoiler (57040-YYXXX).
- This kit **does not** fit motorcycles equipped with a High Output Horn Kit (69180-02A).
- This kit **does not** fit motorcycles equipped with Definitive5™ Filtration System (63800-07, 63801-07, or 63802-07).

#### Additional Parts Required

Proper installation of this kit requires the use of Harley-Davidson High Performance Sealant (99650-02) which is available at a Harley-Davidson dealer.

#### ⚠ WARNING

Rider and passenger safety depend upon the correct installation of this kit. Use the appropriate service manual procedures. If the procedure is not within your capabilities or you do not have the correct tools, have a Harley-Davidson dealer perform the installation. Improper installation of this kit could result in death or serious injury. (00333b)

#### NOTE

This instruction sheet references Service Manual information. A Service Manual for your model motorcycle is required for this installation and is available from a Harley-Davidson Dealer.

#### Kit Contents

See Figure 5 and Table 1.

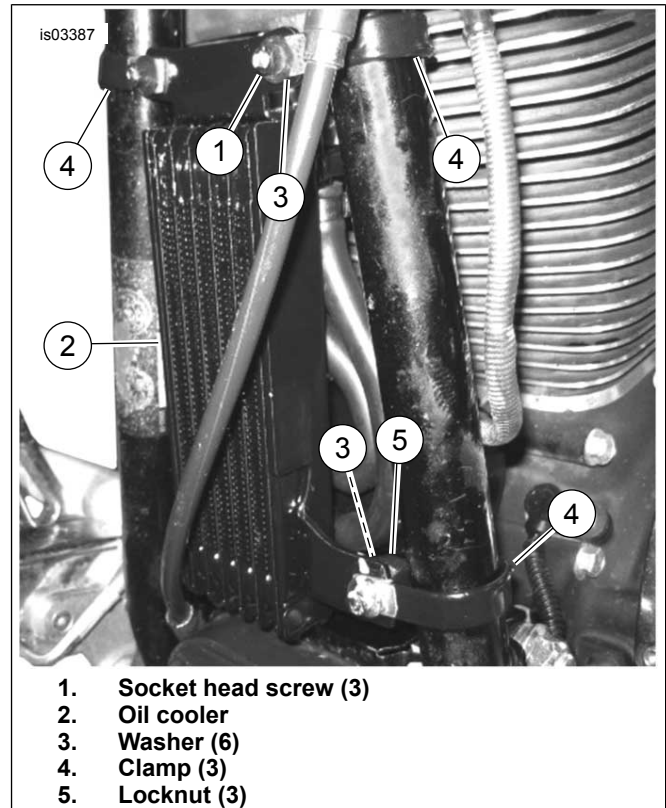
### INSTALLATION

1. See Figure 1. Install the oil cooler (2) to the frame with three clamps (4), three socket head screws (1), three nuts (5) and six washers (3) from the kit. Orient the clamps flat side forward and on the forward side of the oil cooler. Tighten the three oil cooler mounting screws to 10.9–13.5 N·m (96–120 in-lbs).

2. See Figure 2. Remove the spin-on oil filter and oil filter adapter (1) from oil filter mount location. Clean the oil filter mounting area thoroughly. Discard oil filter and adapter.

#### NOTE

The oil cooler adapter assembly has two flanges protruding out of the back side. The flanges must be installed toward the oil filter mounting location and through the oil adapter gasket.



1. Socket head screw (3)
2. Oil cooler
3. Washer (6)
4. Clamp (3)
5. Locknut (3)

Figure 1. Oil Cooler Clamp Installation

3. See Figure 3. From the kit, install the oil cooler adapter gasket (3) onto the oil cooler adapter assembly (1). The oil cooler adapter assembly flanges should be aligned so it is installed into the oil adapter cooler gasket cutout as shown.

#### NOTE

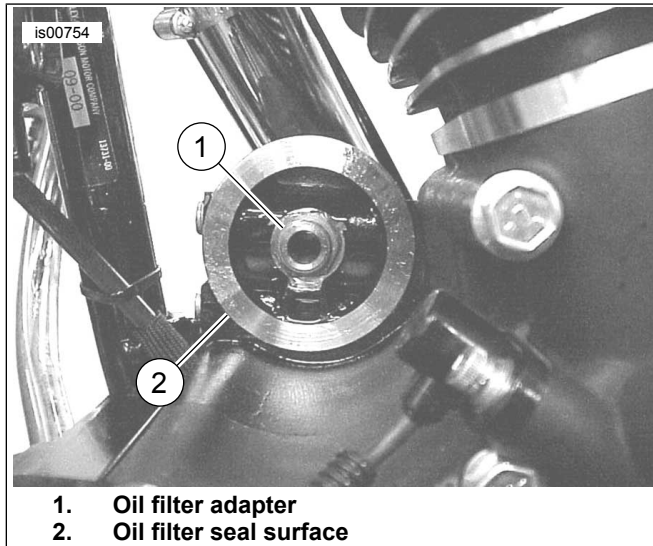
Due to the locating flanges, the oil cooler adapter assembly and gasket will only install properly in one position on the oil filter mounting surface.



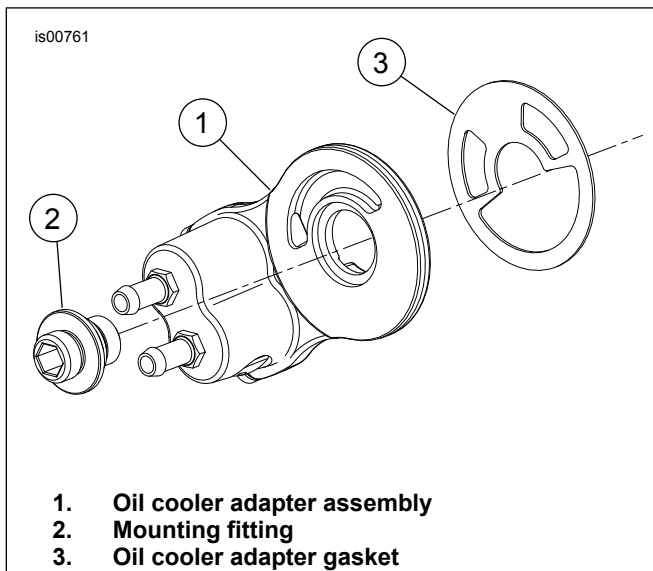
- See Figure 3. Install the oil cooler adapter assembly and gasket onto the oil filter mounting surface of the engine with the mounting fitting (2). Verify adapter locates properly in the mounting surface. Verify the raised lip of the mounting fitting faces the adapter assembly. Tighten mounting fitting to 16.3–21.7 N·m (12–16 ft-lbs).

**NOTE**

Slide hose clamps from the kit onto the hoses prior to installation.



**Figure 2. Stock Filter Mounting Adapter**



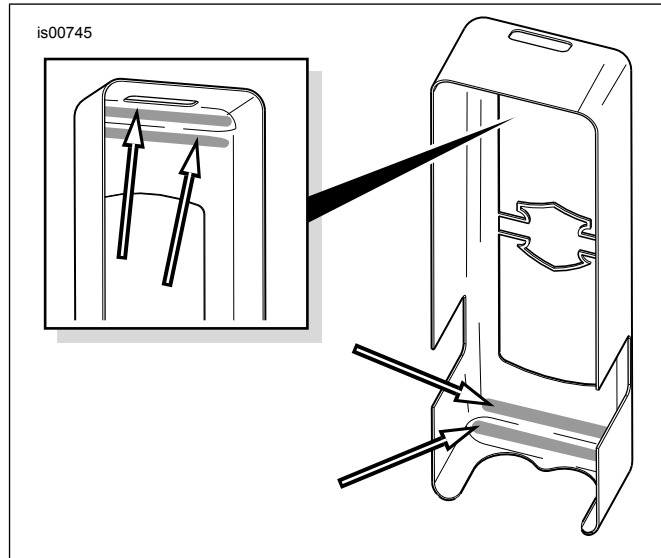
**Figure 3. Install Oil Adapter**

- See Figure 5. Obtain the left side cooler hose (4) and right side cooler hose (5) from kit. Follow the markings on hoses to connect onto the oil cooler and oil cooler adapter, as shown.
- Fasten hoses to oil cooler adapter and oil cooler with worm drive clamps (6). Tighten clamps to 0.9 N·m (8 in-lbs).
- Lubricate a new oil filter's seal with new engine oil. Thread filter on until seal touches mounting surface, then turn an additional 1/2 to 3/4 turn.

**NOTE**

Position the clamps to avoid interference with oil filter installation. Check that hose routing is clear of the oil filter and sharp edges. The hoses must be free of bends or kinks that could obstruct oil flow.

- Verify all cables and harnesses are clear of the oil cooler adapter, in order to prevent wear.
- Thoroughly clean the oil cooler of all dirt, grease and wax with isopropyl alcohol. Use the alcohol to clean the chrome oil cooler cover as needed. Allow to dry.



**Figure 4. Apply Sealant Inside Chrome Cover**

- See Figure 4. Apply sealant to the inside of the chrome cover as shown, at the upper and lower corners.

**NOTE**

Be careful to avoid getting sealant on the oil cooler cooling fins.

Do not operate the motorcycle for 24 hours to allow the sealant to fully cure.

- Slip the cover over the oil cooler. Remove any excess sealant from the front and back of the oil cooler. Hold the cover firmly in place for one minute.

**System Flow Test**

2005 & Later Models or Models with Later Style Dipsticks

**NOTICE**

Oil level cannot be accurately measured on a cold engine. For pre-ride inspection, with motorcycle leaning on jiffy stand on level ground, oil should register on dipstick between arrows when engine is cold. Do not add oil to bring the level to the FULL mark on a COLD engine. (00185a)

2004 & Earlier Models

**NOTICE**

Oil level cannot be accurately measured on a cold engine. For pre-ride inspection with the motorcycle upright (not leaning on jiffy stand) on level ground, the oil should register approximately at the midpoint of the cross-hatch area on the dipstick when the engine is cold. Do not add oil to bring the level to the full mark on a cold engine. (00186b)

**NOTICE**

Do not operate the engine when the oil level is below the add mark on the dipstick at operating temperature. Engine damage will result. (00187b)

**NOTE**

Position the clamps to avoid interference with oil filter installation. Check that hose routing is clear of the oil filter and sharp edges. The hoses must be free of bends or kinks that could obstruct oil flow.

1. Start engine. Examine all hose connections for leaks. If there is no leakage, allow engine to warm up.
2. Verify that temperature of oil cooler increases when engine reaches normal operating temperatures. If the oil cooler remains cool after engine has warmed up, there may be an oil obstruction. Turn off engine and check system for source of obstruction.
3. After engine has cooled, re-tighten all hose clamps to 0.9 N·m (8 in-lbs).
4. Fill oil to FILL level on dipstick.

**SERVICE PARTS**

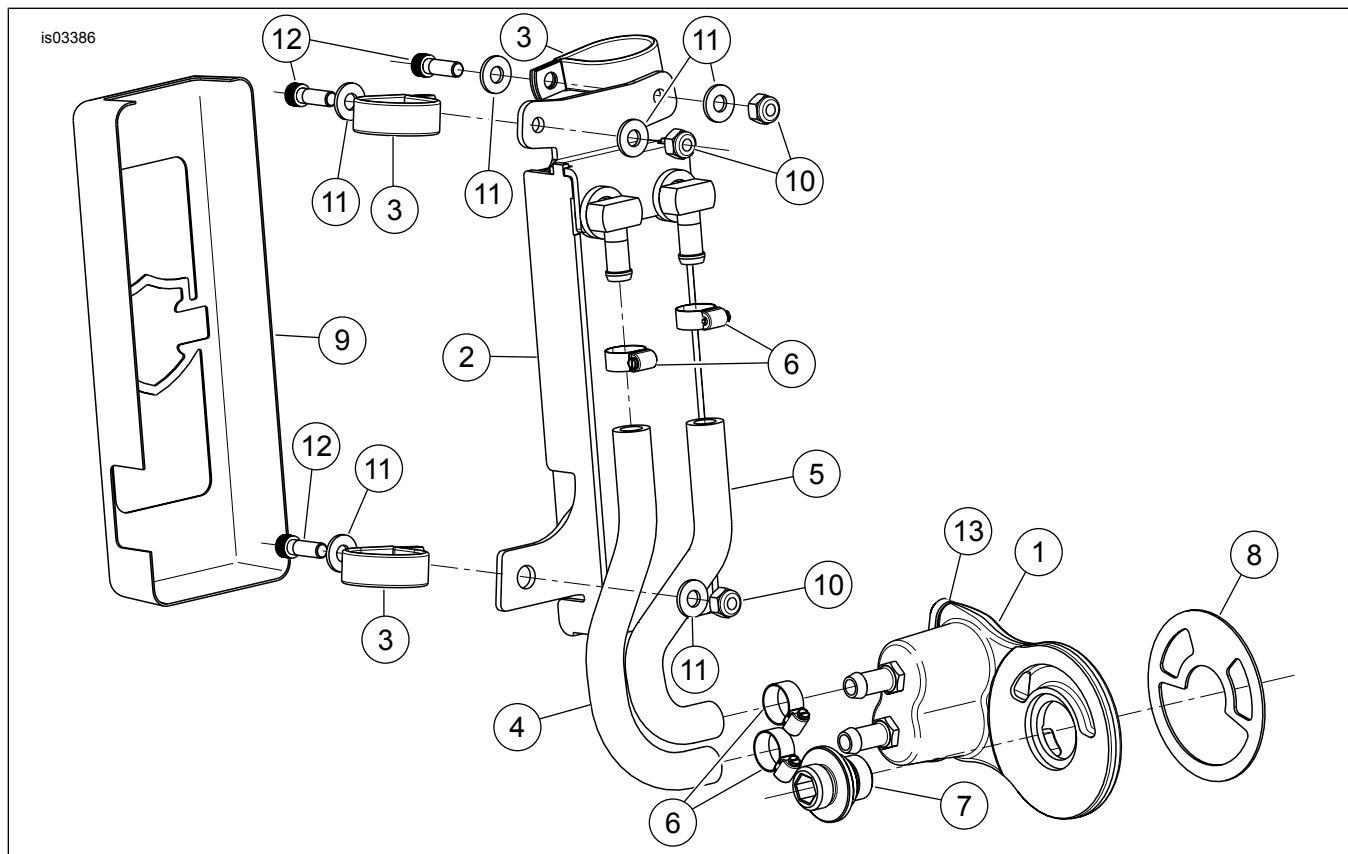


Figure 5. Service Parts for Softail Oil Cooler Kit with Chrome Oil Cooler Cover

Table 1. Service Parts Table

Item	Description (Quantity)	Part Number
1	Oil cooler adapter assembly	26139-05A
2	Oil cooler core, Softail	26158-07
3	Clamp assembly (3)	69318-02
4	Hose (left side) (included in service kit item #14)	Not Sold Separately
5	Hose (right side) (included in service kit item #14)	Not Sold Separately
6	Hose clamp (4) (included in service kit item #14)	Not Sold Separately
7	Adapter, oil filter	26041-05A
8	Gasket, oil cooler adapter (included in service kit item #15)	Not Sold Separately
9	Oil cooler cover	63057-07
10	Lock nut (3)	94026-92T
11	Washer (6)	94065-90T

**Table 1. Service Parts Table**

<b>Item</b>	<b>Description (Quantity)</b>	<b>Part Number</b>
12	Screw, socket head (3)	94312-91T
13	Gasket, oil adapter (included in service kit item #15)	Not Sold Separately
14	Service kit, oil cooler hoses (includes items #4, #5, and #6 (4)) (not shown)	26164-07
15	Service kit, gasket (includes items #8, #13, and two screws) (not shown)	12057-05