



INSTRUCTIONS

J01879

2014-06-30



H-D DETACHABLES SOFTAIL TWO-UP TOUR-PAK MOUNTING RACK

GENERAL

Kit Number

53066-00D, 54051-08A

Models

For model fitment information, see the P&A retail catalog or the Parts and Accessories section of www.harley-davidson.com (English only).

Installation Requirements

Separate purchase of extra parts or accessories may be required for proper installation of this H-D® Detachables™ Tour-Pak® Kit. See the P&A retail catalog or the Parts and Accessories section of www.harley-davidson.com (English only) for a list of required parts or accessories.

⚠ WARNING

Rider and passenger safety depend upon the correct installation of this kit. If the procedure is not within your capabilities or you do not have the correct tools, have a Harley-Davidson dealer perform the installation. Improper installation of this kit could result in death or serious injury. (00308b)

⚠ WARNING

Do not exceed Tour-Pak weight capacity. Too much weight can cause loss of control, which could result in death or serious injury. (00401c)

NOTE

See label inside Tour-Pak, operator's manual or Tour-Pak installation instructions for weight capacity limits.

Maximum Tour-Pak **luggage rack** weight capacity is 10 lbs (4.5 Kg).

Kit Contents

See Figure 3 and Table 1.

Tour-Pak Luggage Installation to Rack

1. Open the lid and, if necessary, remove all items from inside the Tour-Pak luggage. Remove the rubber mat from the luggage floor.
2. If holes ARE NOT pre-drilled in the floor of the luggage, see Figure 1. To prevent damage to the leather while drilling, place blocks of wood underneath the Tour-Pak luggage at the drilling sites. Use the four inboard holes (3) in the metal base of the luggage (2) as a guide. Carefully drill four 9 mm (11/32 in) holes through the floor of the luggage.

NOTE

See Figure 3. When installing the luggage to the rack note the holes in the luggage rack (2). The forward (A) and rearward (B) positions for mounting the luggage.

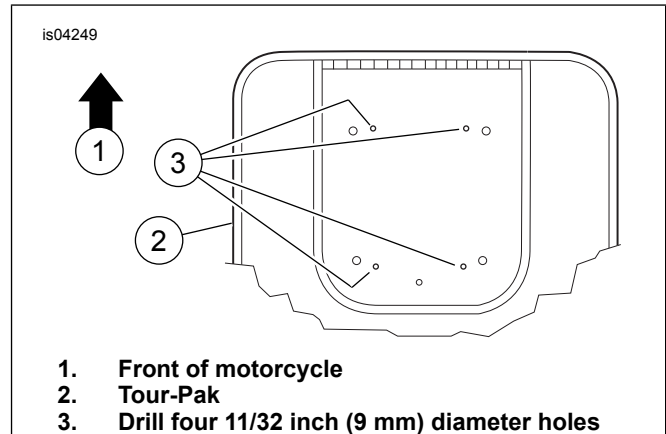


Figure 1. Drill Attachment Hole Locations in Tour-Pak

3. Place the luggage on the luggage rack. Align the holes in the luggage mounting plate with the forward or rearward holes in the rack.
4. **ALL applications:** Obtain the hex head cap screws (9), locknuts (11) and plain washers (10) from the kit. Place a washer over the threads of each screw. Insert the screw threads, from the inside, through the Tour-Pak luggage mounting plate and floor, and into the holes in the rack.

NOTE

Always install the mounting screws from inside the luggage. If the screws are installed from the bottom, the screw ends can tear the rubber mat. The screw ends scratch objects, such as helmets, stored inside the luggage.

5. From the underside of the rack, install a washer and locknut onto the threads of each screw. In a crosswise pattern, incrementally tighten each screw to 25 N·m (19 ft-lbs).
6. Install the rubber mat into the luggage. Close saddlebag.
7. Install the Detachable Docking Hardware Kit to the vehicle per the instructions in **that** kit.

Luggage and Rack Installation to Docking Points

1. See Figure 2, **Inset 1**. Stand behind the motorcycle, pull the rack front hooks (4) into the front docking points (5) in the direction of the black arrow. This can require some gentle squeezing or spreading of the hooks.

2. See Figure 2, **main view (2)**. Pull the rotary latches (8) back into their rearmost position (small curved arrow). Rotate the rack downward (large curved arrow), positioning the rear rotary latches over the rear docking points (6). Verify the latches and rack sideplate (7) notches are aligned and fit into the neck (10) of the rear docking points. This can require some gentle squeezing or spreading of the sideplates.
3. See Figure 2, **Inset 3**. Push the rack downward and close the rotary latches (8). Press the ribbed lever as far forward as it goes (direction of curved arrow). A click is heard when the latch is in place. If the latch does not easily close, do not force. Check alignment again, as described in Steps 8 and 9.
4. **To remove the Tour-Pak luggage and rack**, press the release button (9) and pull the rotary latch lever back. Carefully lift the rear of the rack up and guide the rack out of the front docking points.

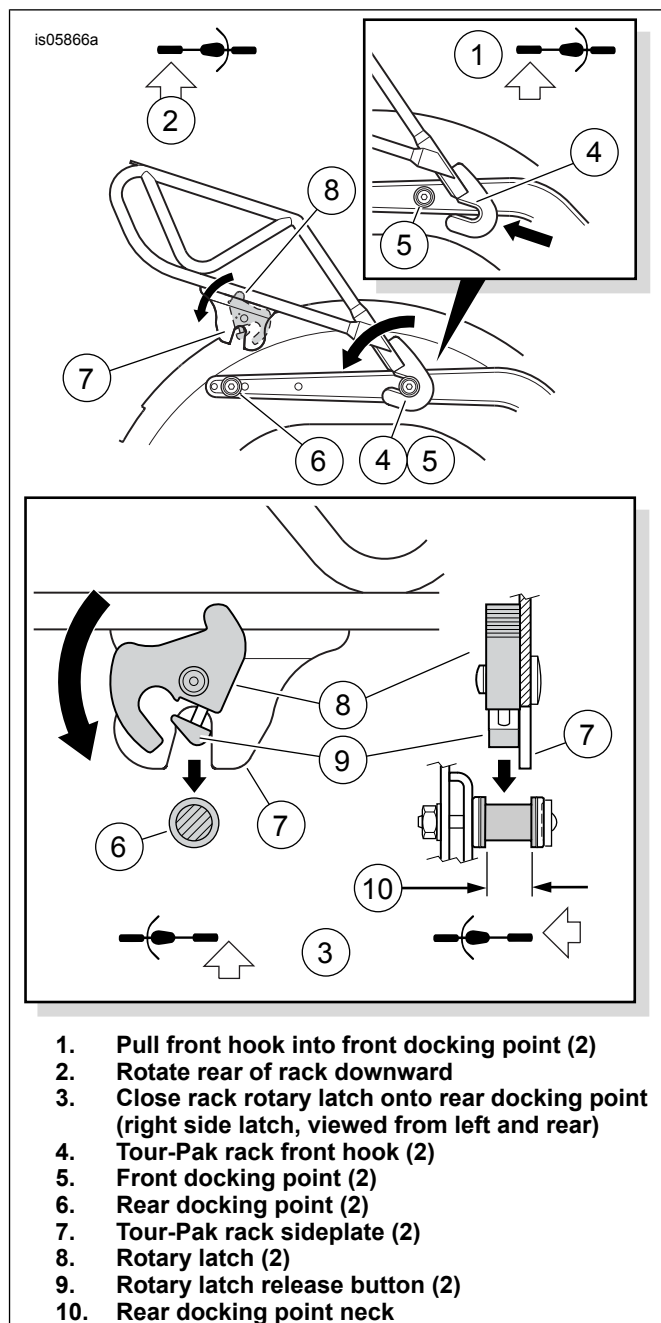


Figure 2. Rack Installation to Docking Points

SERVICE PARTS

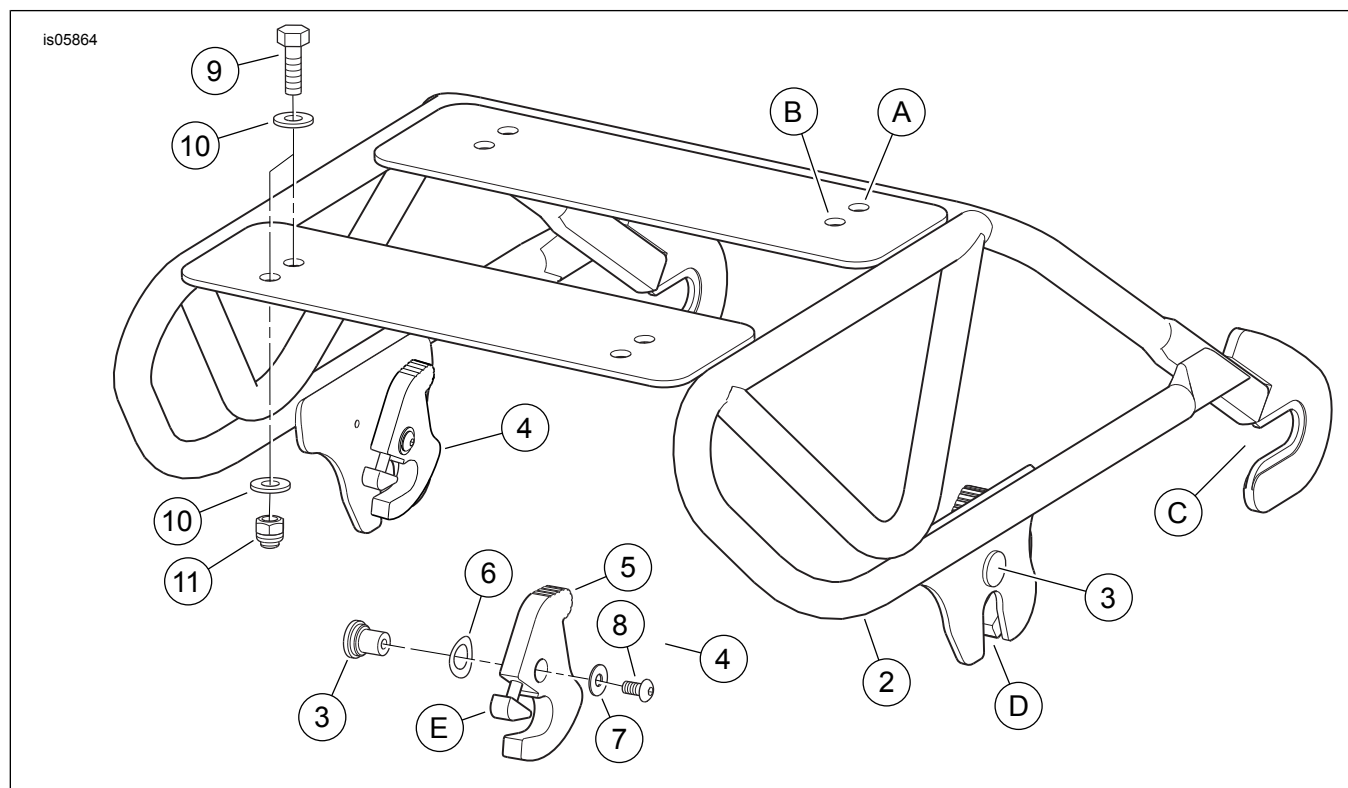


Figure 3. Service Parts, H-D Detachables Softail Two-Up Tour-Pak Luggage Rack

Table 1. Service Parts Table

Item	Description (Quantity)	Part Number
1	Detachable two-up Tour-Pak luggage rack assembly (includes items 2, 3, 4R, 4L)	Not sold separately
2	• Rack weldment	Not sold separately
3	• Pivot stud (2)	Not sold separately
4	• Rotary latch assembly (2) (Includes items 5 through 8)	50300108
5	• Rotary latch	Not sold separately
6	• Wave washer	6828
7	• Flat washer, stainless steel	6827
8	• Screw, button head	Not sold separately
9	Hex head cap screw, 5/16-18 x 25.4 mm (1 in) long (4)	4017
10	Flat washer (8)	6016
11	Hex lock nut, 5/16-18 (4)	7739
Items mentioned in text, but not included in kit:		
A	Forward Tour-Pak luggage mounting location (4)	
B	Rearward Tour-Pak luggage mounting location (4)	
C	Front Tour-Pak luggage rack hook (2)	
D	Rear Tour-Pak luggage rack notch (2)	
E	Rotary latch release button (2)	