



# INSTRUCTIONS

J04153

2008-06-09



## LED TAIL LAMP

### GENERAL

#### Kit Number

69817-07A

#### Models

For model fitment information, see the P&A Retail Catalog or the Parts and Accessories section of [www.harley-davidson.com](http://www.harley-davidson.com) (English only).

#### Additional Parts Required

##### NOTE

This instruction sheet references service manual information. A service manual for your model motorcycle is required for this installation, and is available from a Harley-Davidson Dealer.

#### Kit Contents

See Figure 2 and Table 1.

### INSTALLATION

For models WITH maxi-fuse:

#### ▲ WARNING

To prevent accidental vehicle start-up, which could cause death or serious injury, remove main fuse before proceeding. (00251b)

1. Refer to the service manual and follow the instructions given to remove the seat and maxi-fuse. Retain all seat mounting hardware.

For models WITHOUT maxi-fuse:

#### ▲ WARNING

To prevent accidental vehicle start-up, which could cause death or serious injury, disconnect negative (-) battery cable before proceeding. (00048a)

1. Refer to the service manual and follow the instructions given to remove the seat and disconnect the negative (black) battery cable from the negative (-) battery terminal. Retain all seat mounting hardware.
2. See Figure 1. Loosen the two Phillips head screws (2) retaining the tail lamp assembly (1) to the lamp base (3) and pull the lamp assembly away from the base.
3. Depress the locking tab, and disconnect the tail lamp four-place Multilock socket housing [93B] (4) from the circuit board (7). Remove the lamp from the vehicle.

##### NOTE

The left-side turn signal socket housing [18B] should be white, and the right-side turn signal socket housing [19B] should be black. If this is not the case, mark the connectors for proper assembly.

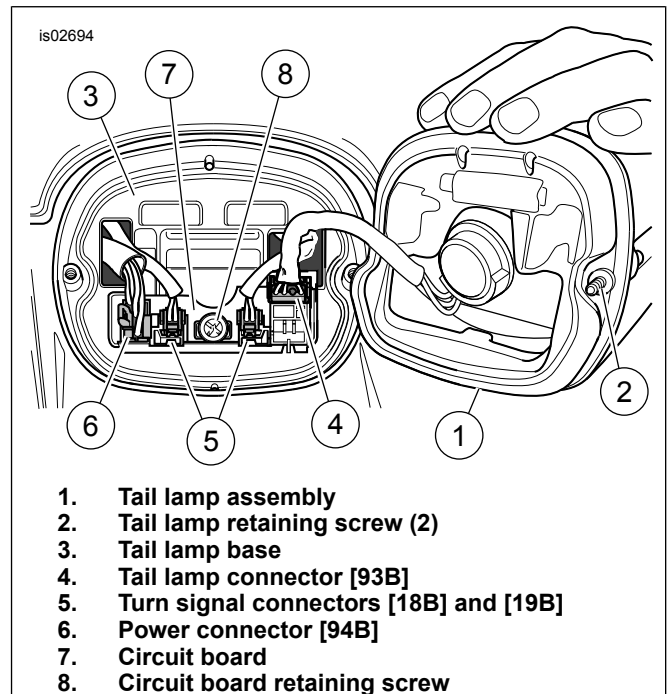


Figure 1. Removing the Tail Lamp Assembly

4. Depress the locking tabs, and disconnect both two-place turn signal socket housings [18B] and [19B](5) and the six-place power connector [94B](6) from the circuit board.
5. Remove the Phillips head screw (8) retaining the circuit board, and remove the pin housing/circuit board and lamp base from the vehicle. Discard the lamp base, but retain the pin housing/circuit board and screw.
6. Unhook the rear lamp wiring from the retainer clips on the underside of the rear fender.
7. Remove the four hex head cap screws and flat washers retaining the license plate/tail lamp bracket to the rear fender, and remove the bracket from the vehicle. Retain the screws and washers. The bracket can be discarded.
8. See Figure 2. Obtain the new license plate/tail lamp bracket (2) from the kit. Hold the bracket in position under the fender, and drop the six-place power connector [94B] and both two-place turn signal connectors [18B] and [19B] down through the slots in the top of the bracket.

9. Fasten the license plate/tail lamp bracket to the rear fender with the four hex head cap screws and flat washers removed in Step 7. Alternately tighten the screws to 20.3–27.1 N·m (15–20 ft-lbs).
10. Obtain the pin housing/circuit board and Phillips head screw removed in Step 5, and install to the license plate/tail lamp bracket (fits only one way). Tighten the screw to 4.5–5.4 N·m (40–48 in-lbs).

**NOTE**

*Fill the pin cavities in the circuit board with dielectric grease from the packet in the kit before assembling the connector halves.*

11. Refer to the note after Step 3. Connect the white left-side turn signal socket housing [18B] to the two-place pin housing to the left of the circuit board retaining screw until it clicks into place. Connect the black right-side turn signal socket housing [19B] to the right of the screw. Connect the six-place power connector socket housing [94B] to the six-place pin housing in the circuit board.
12. Obtain the **new** tail lamp (light envelope, item 1) and two black screws (6) from the kit. Connect the socket housing on the lamp assembly to the four-place pin housing in the circuit board.
13. Install the tail lamp to the license plate/tail lamp bracket, and tighten the screws to 2.3–2.7 N·m (20–24 in-lbs).
14. Obtain the **new** license plate bracket (3), reflector bracket (4), nut plate (5) and two remaining black screws (6) from the kit. Use the screws to fasten the brackets, in the sequence and orientation shown, through the license plate/tail lamp bracket and into the nut plate. Tighten the screws to 2.3–2.7 N·m (20–24 in-lbs).

15. Obtain the reflector (11) from the kit, and peel the backing from the adhesive surface. Hold the reflector up to the reflector bracket, and press the reflector firmly and squarely into place.

**NOTICE**

**Do not over-tighten bolts on battery terminals. Use recommended torque values. Over-tightening battery terminal bolts could result in damage to battery terminals. (00216a)**

16. Verify that the ignition/key switch is in the OFF position. **Models WITH maxi-fuse:** Refer to the service manual and follow the instructions given to install the maxi-fuse. **Models WITHOUT maxi-fuse:** Connect the negative (-) battery cable per the instructions in the service manual. Apply a light coat of petroleum jelly or corrosion retardant material to the battery terminal. Refer to the service manual, and follow the instructions given to install the seat.

**⚠ WARNING**

**After installing seat, pull upward on seat to be sure it is locked in position. While riding, a loose seat can shift causing loss of control, which could result in death or serious injury. (00070b)**

**⚠ WARNING**

**Be sure headlamp, tail and stop lamp and turn signals are operating properly before riding. Poor visibility of rider to other motorists can result in death or serious injury. (00478b)**

17. Turn the ignition/key switch to ON, but do not start the motorcycle. Test for proper tail lamp and stop lamp operation.

# SERVICE PARTS

is02692

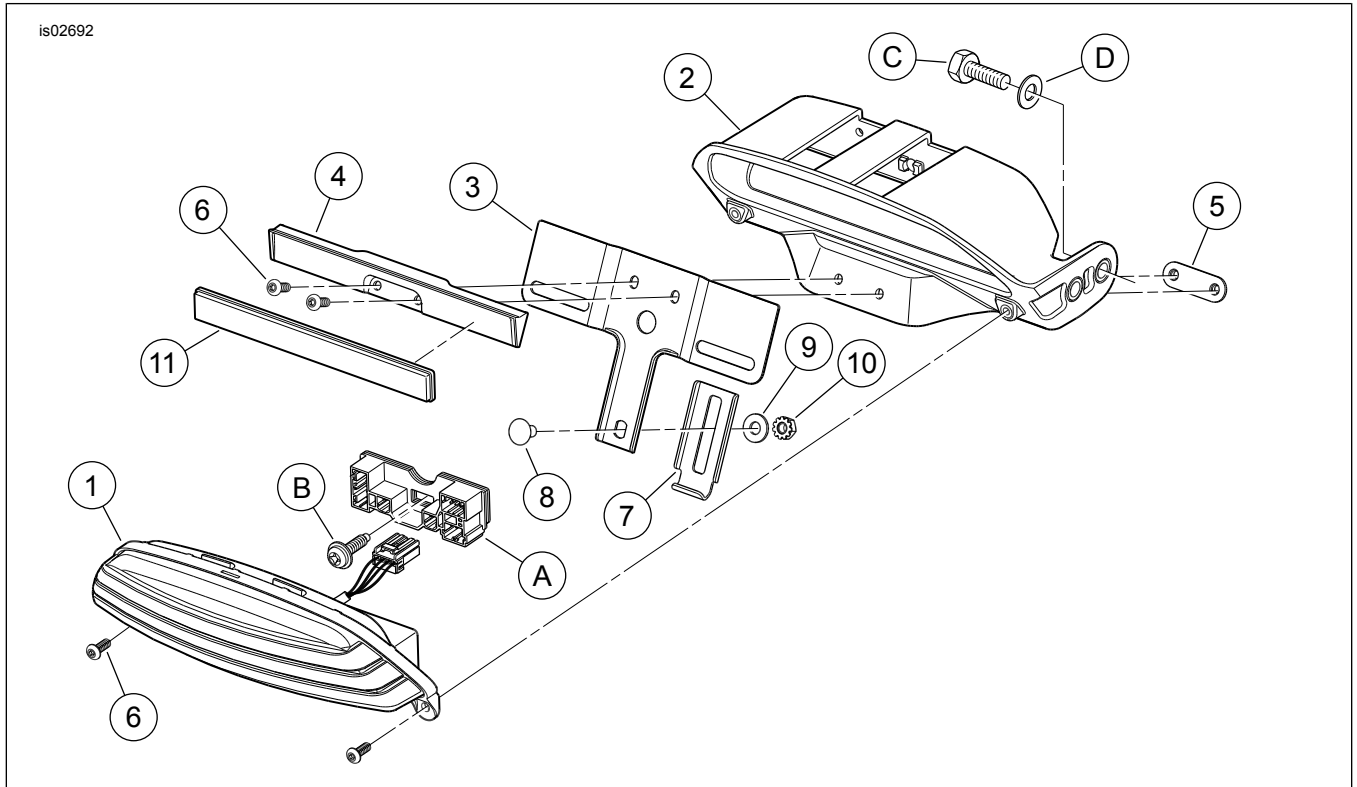


Figure 2. Service Parts, LED Tail Lamp

Table 1. Service Parts Table

Item	Description (Quantity)	Part Number
1	Envelope, tail lamp	68349-07C
2	Bracket, license plate/ tail lamp	60235-07
3	Bracket, license plate lower (black)	60082-05
4	Bracket, reflector	68418-07
5	Nut plate	68442-07
6	Screw, button head, Torx®, black (4)	4667
7	Clamp, license plate (black)	60001-55
8	Carriage bolt	5403B
9	Washer, flat (heat treated)	6110
10	Nut, hex, with lock washer	7792
11	Reflector (red)	59988-72A
<b>Items mentioned in text, but not included in kit:</b>		
A	Original equipment pin housing/ circuit board	
B	Original equipment circuit board retaining screw	
C	Original equipment license plate/ tail lamp bracket retaining screw (4)	
D	Original equipment flat washer (4)	