



INSTRUCTIONS

J03145

2005-05-20



SOFTAIL® DETACHABLE SADDLEBAG KITS

GENERAL

Kit Number

90384-06 and 90388-04

Models

These kits **do not fit** with Wide Tire kits, Rear Axle Covers or Flat Lens Turn Signal kit 68431-95 or 68432-95.

Kit **90384-06** fits 2000 and later Softail (except FLSTF, FXSTD, FLSTN and models equipped with Shotgun-style exhaust systems).

2006 FL Softail and 2000-2005 Softail models require separate purchase of Saddlebag Support kit 90979-06.

2000-2001 models require separate purchase of Bullet-style Turn Signal kit 68005-99.

Kit **90388-04** fits 2000 and later FLSTF and Softail models (except FXSTD and FLSTN) equipped with Shotgun-style exhaust systems.

2000-2001 models require separate purchase of Bullet-style Turn Signal kit 68005-99.

Kit Contents

See Figure 6 and Table 1.

⚠ WARNING

Do not exceed saddlebag weight capacity. Put equal weight in each bag. Too much weight in saddlebags can cause loss of control, which could result in death or serious injury. (00383a)

NOTE

Maximum saddlebag weight capacity is 7 pounds (3.2 Kg.)

Do not exceed 7 lbs. (3.2 Kg) maximum load in each saddlebag. Evenly distribute weight between each saddlebag. Improper loading can cause vehicle handling problems leading to death or serious injury.

⚠ WARNING

Federal Motor Vehicle Safety Standard (FMVSS) 108 requires motorcycles to be equipped with rear and side reflectors. Be sure rear and side reflectors are properly mounted. Poor visibility of rider to other motorists can result in death or serious injury. (00336b)

INSTALLATION

Saddlebag Bar Installation-All Models

- See Figure 1. Remove and discard the two stock fender attaching screws as shown. Models with docking points; remove and save the docking points for use with the new saddlebag bar.
- See Figure 6. Obtain the following items from the kit:
 - a saddlebag mounting bar (15),
 - two screws (17),
 - EITHER** 3-1/4in (82 mm) long (2002 or earlier models)
 - OR** 2-3/4 in (70 mm) long (2003 or later models),
 - AND** two spacers (16) (models not using docking points).

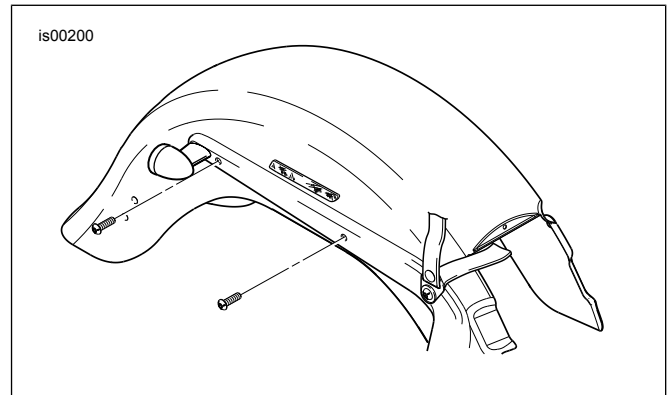


Figure 1. Remove and Discard Stock Screws

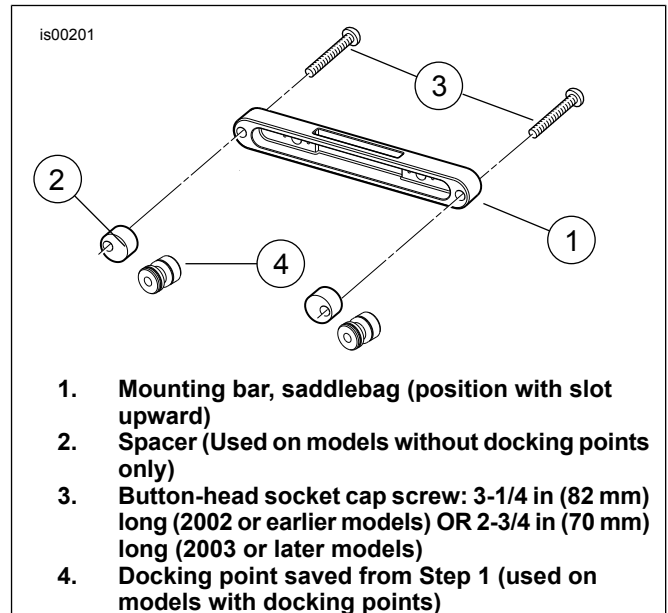


Figure 2. Install Mounting Bar

3. See Figure 2. Fasten the mounting bar to the fender support as follows:
 - a. If docking points were removed in Step 1, position a docking point against the back side of the mounting bar with the countersunk side away from the bar. Skip to Step 3c.
 - b. If a docking point was not removed in Step 1, position a spacer (2) from the kit against the back side of the mounting bar.
 - c. Line up the hole in the docking point or spacer with one of the end holes in the bar.
 - d. Insert the proper screw (3) for your year motorcycle through the hole in the mounting bar, and the spacer or docking point. Apply a few drops of Loctite® 243 (blue) to the screw threads.
 - e. Position the mounting bar with the rectangular slot facing upward, and attach the bar to the rear fender, but do not fully tighten at this time.

NOTE

If the saddlebag mounting bar contacts the rear turn signal, it will be necessary to loosen the turn signal and adjust to allow clearance with the bar. Loosen the turn signal mount screw two to three turns. Adjust rearward to allow approximately 1/32" (1 mm) of clearance between the turn signal and the mounting bar. Tighten the turn signal mount screws.

4. Position the second spacer or docking point at the other end of the mounting bar. Swing the mounting bar into place, lining up the holes. Insert a screw through the hole in the mounting bar and the spacer or docking point. Apply a few drops of Loctite 243 (blue) to the screw threads. Attach the bar to the rear fender.
5. If using the spacers, rotate the spacers so the outer edges align with the rounded ends of the mounting bar.
6. Tighten both screws to 28.5–36.6 N·m (21–27 ft-lbs).
7. Repeat Steps 1 through 6 for the opposite side, then proceed to Left and Right Side Installation for your model.

Mounting Hardware Installation: Left Side-All Models, Right Side-Kit 90384-06 only

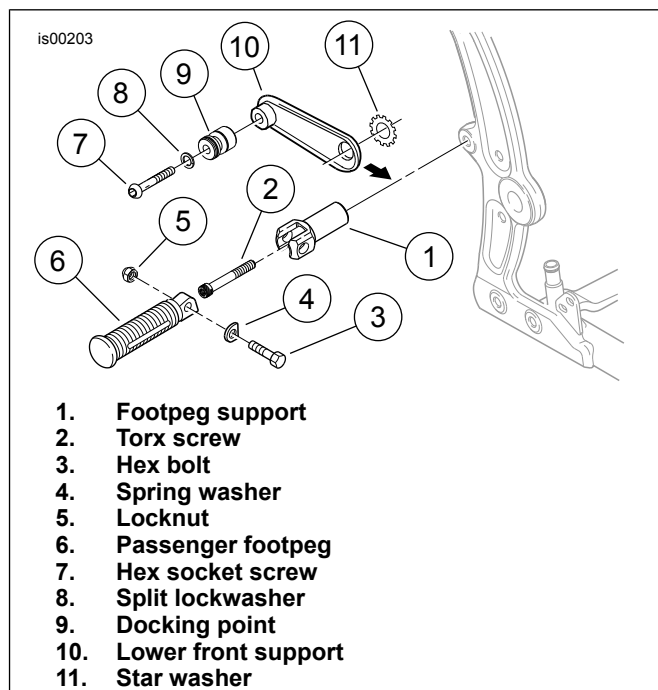


Figure 3. Lower Front Saddlebag Support (Left Side All, Right Side Without Shotgun Exhaust)

1. See Figure 3. Remove the bolt (3) and locknut (5) retaining the passenger footpeg (6) and spring washer (4) to the footpeg support (1). Use an extended T-50 Torx® drive head to remove the screw (2) fastening the footpeg support to the motorcycle frame.
2. Obtain the following items from the kit:
 - one lower front support (10),
 - one docking point (9),
 - one external-toothed (star) washer (11),
 - one 5/16-18 x 1-1/2 in. long button head screw (7),
 - one 5/16 in. split lockwasher (8).
3. Insert the Torx® screw (2) through the footpeg support (1) and the large hole in the lower front support (10). Place the star washer (11) over the screw threads, and apply a few drops of Loctite 243 (blue) to the threads.
4. Thread the screw into the mounting hole in the motorcycle frame, but do not fully tighten at this time.
5. Proceed to instructions under **Saddlebag Installation OR Right Side** hardware installation for your model motorcycle.

Mounting Hardware Installation: Right Side on Kit 90388-04 (Fat Boy or Models with Shotgun Exhaust)

▲ WARNING

Perform this installation when the engine is cool. Working on or near the exhaust system when the engine is hot could result in severe burns. (00311b)

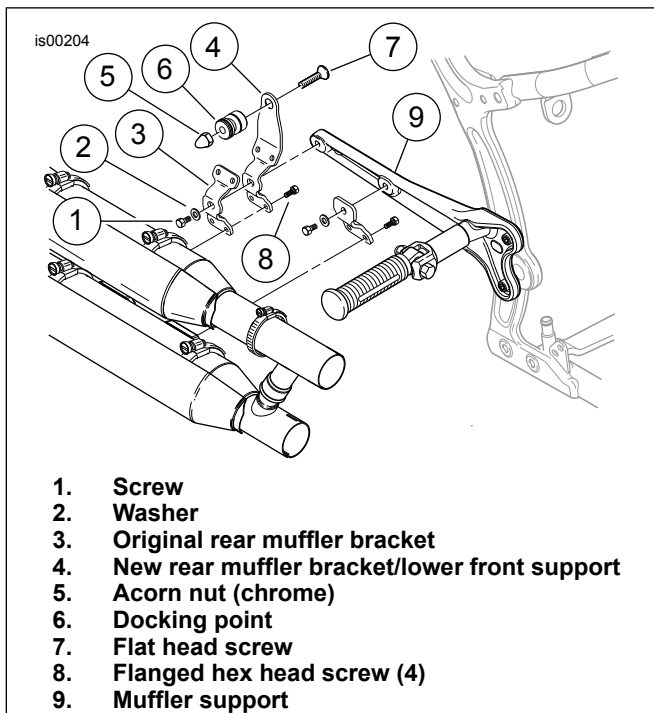


Figure 4. Lower Front Saddlebag Support (Right Side With Shotgun Exhaust)

1. See Figure 4. Remove the four flanged-head hex screws (8) holding the rear muffler bracket (3) to the front and rear mufflers.
2. Remove the screw (1) and washer (2) holding the rear muffler bracket (3) to the muffler support (9).
3. Obtain the following items from the kit:
 - the muffler bracket/ lower front support (4),
 - one docking point (6),
 - a flat head screw (7),
 - a chrome acorn nut (5).
4. Position the new muffler bracket/ lower front saddlebag support (4) as shown, and install **in place of** the stock rear muffler bracket (3) with the same screws (8) removed earlier. Do not fully tighten at this time.
5. Loosely install the screw (1) and washer (2) to attach the new muffler bracket to the muffler support. Tighten screw (1) to 20.3–25.8 N·m (15–19 ft·lbs). Tighten the four screws (8) securely. Proceed to instructions under "**Saddlebag Installation**".

Saddlebag Installation - All Models

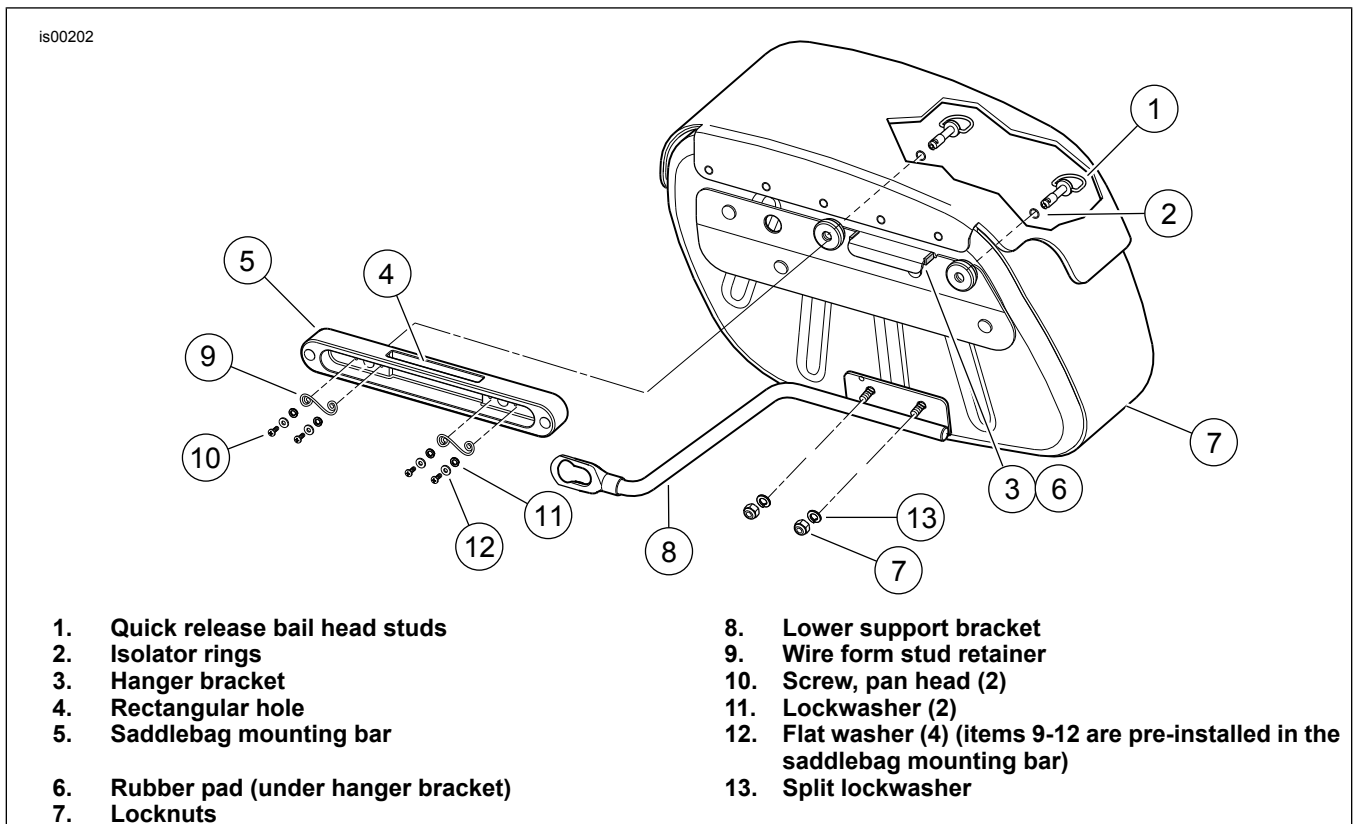


Figure 5. Rear View of Saddlebag and Saddlebag Mounting Bar

1. For 2006 and later FL Softail and 2000-2005 Softail models, unbolt lower support arm from both saddlebags. Replace arms with arms from Saddlebag Support Kit 90455-04. Re-install as shown in Figure 5. Tighten locknuts (7) to 7–11 N·m (60–96 in-lbs).
2. The saddlebags are side-specific. Obtain the correct saddlebag from the kit. Insert the lower support bracket on the saddlebag into the docking point on the lower front support.
3. See Figure 5. With the two quick-release bail-head studs (1) fully retracted into the isolator rings (2), rotate the saddlebag down until the hanger bracket (3) fits into the rectangular hole in the top of the saddlebag mounting bar. Check to make sure the molded rubber isolator pad (6) on the underside of the hanger bracket sits squarely on the top of the bar.

NOTE

The molded rubber isolator pad on the underside of the saddlebag hanger bracket must sit squarely on the top surface of the saddlebag mounting bar. If saddlebag is not fully seated, loosen the locknuts (7) securing the lower support bracket (8) to the saddlebag frame, and adjust the support rod forward or back as needed. Alternately tighten the nuts to 7–11 N·m (60–96 in-lbs) after seating the saddlebag.

4. **For all except HDI models:** Grasp the "D"-ring on one of the two quick-release studs (1) inside the saddlebag. **For HDI models:** Regulations require that the "D"-ring be removed from the quick-release studs in all HDI applications. Without the "D"-ring, a coin or flat-bladed tool will be needed to install or remove the saddlebags. **For all models:** With the groove at the end of the stud held in a horizontal position, insert the stud through the hole in the saddlebag mounting bar (5). When the groove engages the wire form (9) inside the bar, turn the stud clockwise a full 1/4 turn until it snaps in place. Install the second quick-release stud in the same manner.
5. See Figure 3. Rotate the footpeg support (1) so the footpeg slot angles up toward the rear at a 45 degree angle. Using an extended T-50 Torx® drive head, torque the screw (2) to 61–68 N·m (45–50 ft-lbs).
6. See Figure 5. Make sure the lower support bracket (8) is fully inserted into the groove in the docking point. If it is not fully inserted, loosen the locknuts (7) securing the lower support bracket to the saddlebag frame, and adjust the support rod forward or back as needed. Alternately tighten the nuts to 7–11 N·m (60–96 in-lbs) after fully inserting the lower support bracket.
7. See Figure 3. Install the passenger footpeg on the footpeg support as shown using the bolt (3), spring washer (4), and locknut (5) removed earlier.

NOTE

The spring washer (4) goes between the jaws of the footpeg support (1) along with the mounting end of the footpeg (6).

NOTE

Footpeg must be installed in the bracket with the rounded side of the mounting end inboard. When footpegs are

properly installed, footpegs will fold upward at a 45 degree angle toward the rear of the motorcycle.

▲ WARNING

Footrests must fold up and toward rear of motorcycle if struck. Failure to set footrests to fold up and back could result in death or serious injury. (00366a)

8. Repeat Steps 1 through 6 under "**Saddlebag Installation All Models**" on the opposite side of the vehicle.

▲ WARNING

Federal Motor Vehicle Safety Standard (FMVSS) 108 requires motorcycles to be equipped with rear and side reflectors. Be sure rear and side reflectors are properly mounted. Poor visibility of rider to other motorists can result in death or serious injury. (00336b)

9. See Figure 6. Install the reflectors from the kit on the outboard side of the saddlebag lid, centered between the strap rivets. The reflectors are side-specific. Obtain the correct reflector from the kit. Remove the adhesive backing and press the reflector firmly into place on each saddlebag to activate the adhesive.

Maintenance

Saddlebag Support Brackets

▲ WARNING

The lower saddlebag support bracket is not a footrest or step. Using the support bracket as either a footrest or step can cause the supports to separate from the docking points and fall to the road, which could cause loss of control and death or serious injury. (00405e)

Saddlebag Mounting Bolts

NOTE

After 500 miles (800 km) of on-road use with the saddlebags installed, it is necessary to check the torque on the saddlebag mounting bolts. Check to make sure the torque is still 28.5–36.6 N·m (21–27 ft-lbs). Re-tighten bolts if necessary. See the Caution below.

NOTICE

Failure to tighten saddlebag mounting bolts to specified torque could result in damage to saddlebags. (00406c)

Saddlebag Quick-Release Studs

NOTE

After 15,000 to 20,000 miles (24,000 to 32,000 km) of on-road use with the saddlebags installed, it is necessary to replace the wire form stud retainers shown in Figure 5. Two Stud Retainer Kits (Part Number 70923-04) will be needed, and are available for purchase at any Harley-Davidson Dealer.

NOTICE

Failure to replace stud retainers after each 15,000 to 20,000 miles (24,000 to 32,000 km) of road use could result in saddlebag damage. (00407c)

Saddlebag Docking Points

NOTE

In time, the docking points may wear, causing the lower front support brackets to become loose. The fit may be tightened using the following procedure:

1. Loosen the docking hardware.
2. Rotate the docking points clockwise approximately 45 degrees.
3. Tighten the docking hardware to the appropriate torque values as indicated in the installation procedures.

SERVICE PARTS

This procedure can be repeated up to 3 times before replacement of the docking points is recommended.

Saddlebag Care

Apply the Leather Dressing included with the saddlebag kit according to the supplied directions.

NOTE

Genuine Harley-Davidson Leather Dressing (part number 98261-91V) is available for purchase from any Harley-Davidson Dealer.

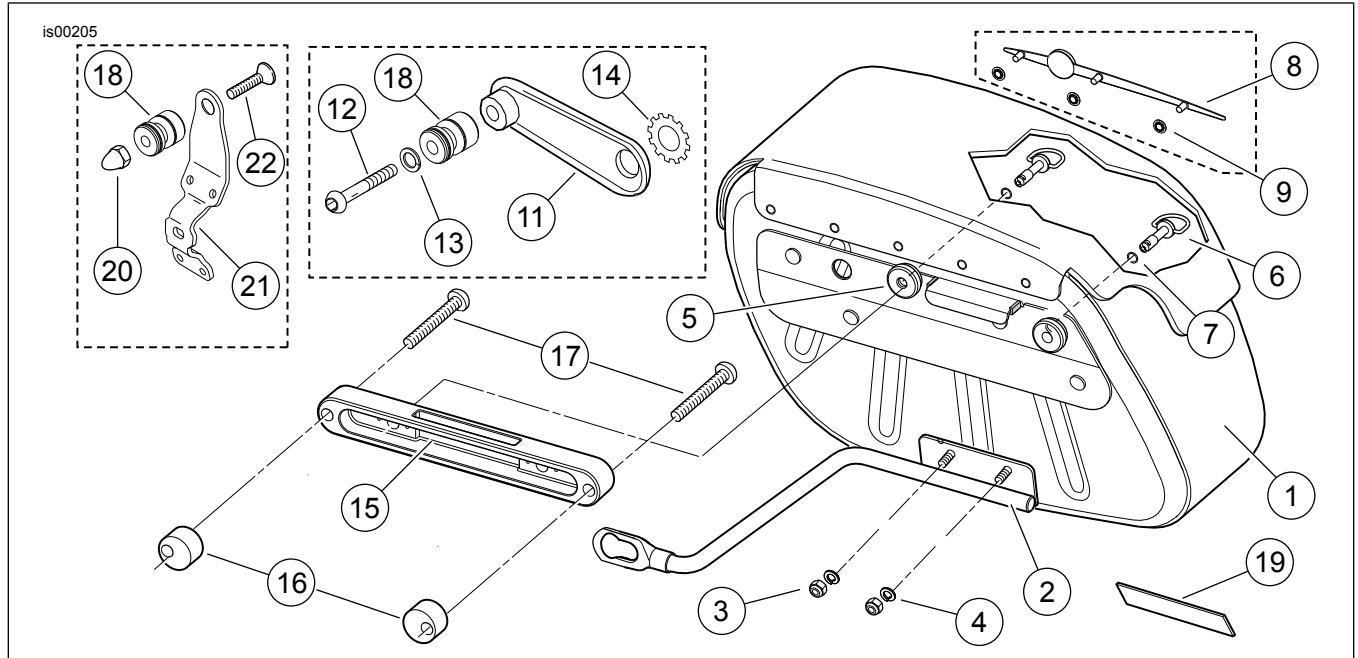


Figure 6. Service Parts: Softail Detachable Saddlebag Kits

Table 1. Service Parts: Softail Detachable Saddlebag Kits

Item	Description (Quantity)	Part Number	Item	Description (Quantity)	Part Number
1	Saddlebag assembly, (includes items 2 - 9)		17	Saddlebag mounting bolts, button-head socket cap screw (4)	
	Right side saddlebag, Kit 90384-06	90441-06		3/8-16 x 3-1/4 in (2002 & earlier)	4229
	Right side saddlebag, Kit 90388-04	90442-04		3/8-16 x 2-3/4 in (2003 & later)	Not Sold
	Left side saddlebag (not shown), Kit 90384-06	90623-06	18	Docking point (2)	53683-96
	Left side saddlebag (not shown), Kit 90388-04	90452-04	19	Reflector (red) right side	59287-92
				Reflector (red) left side	59288-92
Items 2 through 9 are pre-installed on the saddlebag					
2	Bracket, support (lower)	See Service Kits	Items 20-22 in Kit 90388-04 only (For models with shotgun exhaust)		
3	Lock nut (2)	7686	20	Acorn nut (chrome)	94008-90T
4	Split lockwasher (2)	94080-90T	21	Saddlebag support and muffler bracket, lower front	Not Sold
5	Isolator ring (2)	11464	22	Flat head cap screw	1605
6	Stud, quick release (2)	Not Sold	The following Service Kits are available for these kits:		
7	Retaining ring (2)	Not Sold		Bracket Kit for 90384-06, Right Hand	90525-06
8	Ornament, saddlebag lid (right)	See Service Kits		Bracket Kit for 90384-06, Left Hand	90957-06
9	Push nut (3)	8126A		Bracket Kit for 90384-06 with saddlebag support Kit 90979-06, Right Hand	90455-04
10	Leather dressing, (not shown)	Not Sold		Bracket Kit for 90384-06 with saddlebag support Kit 90979-06, Left Hand	90457-04

Table 1. Service Parts: Softail Detachable Saddlebag Kits

Item	Description (Quantity)	Part Number	Item	Description (Quantity)	Part Number
11	Saddlebag support, lower front	90346-00		Bracket Kit for 90388-04, Left Hand	90457-04
12	Button head cap screw 5/16-18 x 1-1/2 in (2)	Not Sold		Bracket Kit for 90388-04, Right Hand	90456-04
13	Lockwasher, 5/16 in (2)	94081-90T		Ornament kit (right hand) (includes items 8 and 9)	90458-04
14	Lockwasher, external tooth (2)	7145W		Ornament kit (left hand) (includes items 8 and 9)	90459-04
15	Mounting bar, saddlebag	See Service Kits		Fender mounting kit (Includes item 15 and two of item 16)	91797-04
16	Spacer (2)	See Service Kits		Stud retainer kit (includes items 9-12 shown in Figure 5)	70923-04