



INSTRUCTIONS

J04015

2007-10-09



ROAD GLIDE INNER FAIRING

GENERAL

Kit Number

58663-07XXX

NOTE

This instruction sheet covers a large number of inner fairing kits with the color being the only difference between kits. The "XXX" denotes the last three letters for each kit based on the paint color for each kit.

Models

These kits fit 1998 and later FLTR/FLTRI (Road Glide) Touring Model motorcycles.

⚠ WARNING

Rider and passenger safety depend upon the correct installation of this kit. Use the appropriate service manual procedures. If the procedure is not within your capabilities or you do not have the correct tools, have a Harley-Davidson dealer perform the installation. Improper installation of this kit could result in death or serious injury. (00333b)

NOTE

This instruction sheet references Service Manual information. A Service Manual for your model motorcycle is required for this installation and is available from a Harley-Davidson Dealer.

Kit Contents

See Figure 1 and Table 1.

INSTALLATION

1. See appropriate CHASSIS section in the Service Manual for instructions to remove original equipment outer and inner fairing.

NOTE

Once the outer and inner fairing have been removed, it is necessary to transfer all of the gauges, switches and associated hardware to the new inner fairing in the order they are removed from the original inner fairing.

2. Transfer all gauges, switches and associated hardware to the new fairing in the order they were removed.
3. See Figure 1. Install the right hand storage box cover (2) and left hand storage box cover (3) on the new inner fairing using the saved hardware.
4. Clean outside edge surface of the new inner fairing (1) with a 50/50 isopropyl alcohol/water solution in preparation for installing the rubber trim molding. Allow surface to dry thoroughly.
5. Test the correct placement of side trim rubber molding (6), with the long side of the strip channel of the inside of the fairing edge, before installation.
6. Test the correct placement of top trim rubber molding (5).
7. See appropriate CHASSIS section in the Service Manual for instructions to install inner and outer fairing.



SERVICE PARTS

is03133a

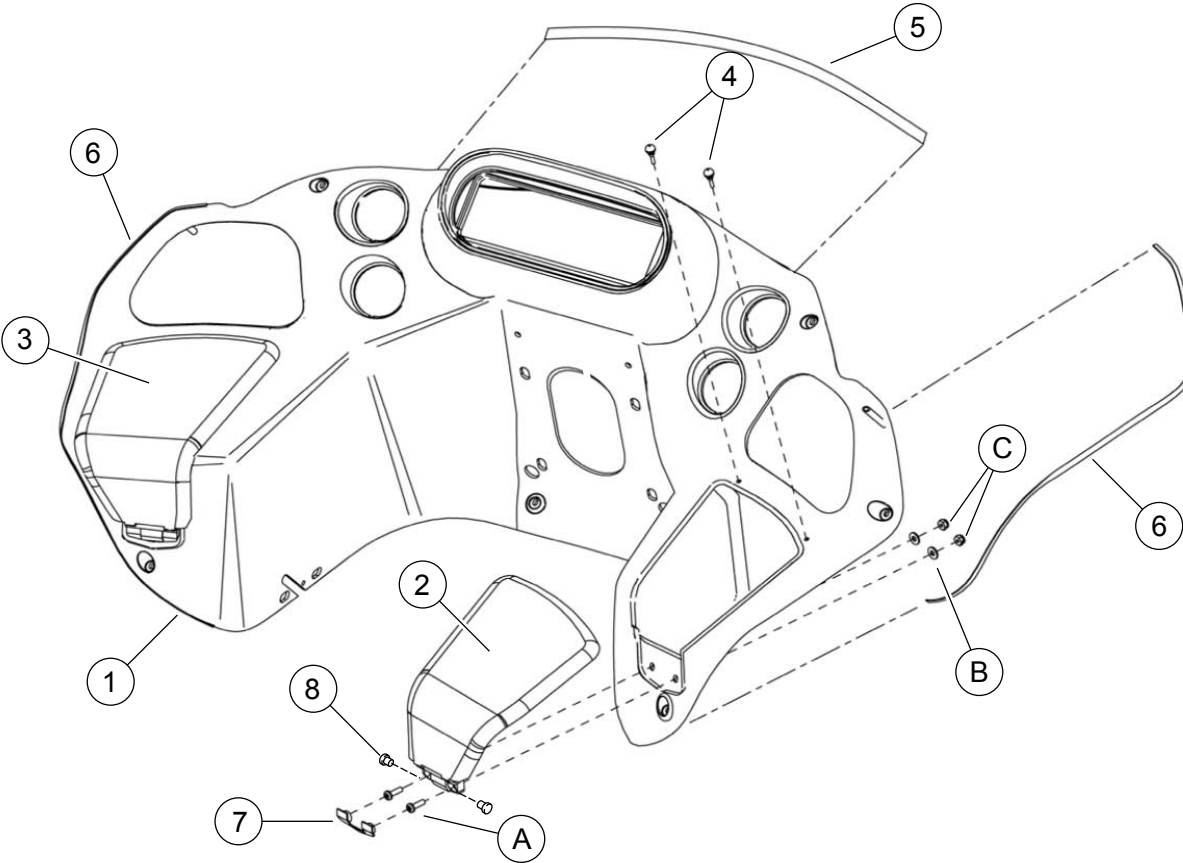


Figure 1. Service Parts: Road Blide Inner Fairing

Table 1. Service Parts: Road Glide Inner Fairing

| Item | Description (Quantity) | Part Number |
|---------------------------------------------------|--------------------------------|---------------------|
| 1 | Fairing, Inner | Not Sold Separately |
| 2 | Cover, storage box, right hand | 58727-07XX |
| 3 | Cover, storage box, left hand | 58728-07XX |
| 4 | Bumper, fairing door (4) | 58888-98A |
| 5 | Top trim | 64256-98 |
| 6 | Side trim (2) | 58359-98 |
| 7 | Hinge cover, storage box (2) | 58459-98XXX |
| 8 | Barrel hinge (4) | 64255-98XXX |
| Items mentioned in text, but not included in kit: | | |
| A | Screw, pan (4) | 2665 |
| B | Washer (4) | 6716 |
| C | Nut, hex lock (4) | 7624 |