



INSTRUCTIONS

J04386

2009-02-12



DETACHABLE SADDLEBAG LOWER SUPPORT BRACKET KIT

GENERAL

Kit Numbers

90637-06B, 90642-06C

Models

For model fitment information, see the P&A Retail Catalog or the Parts and Accessories section of www.harley-davidson.com (English only).

Use **Kit 90637-06B** for the right lower support for Kit 90460-06 and 90181-08A.

Use **Kit 90642-06C** for the left lower support for Kit 90460-06 and 90181-08A.

Kit Contents

See Figure 5 and Table 1.

⚠ WARNING

Rider and passenger safety depend upon the correct installation of this kit. Use the appropriate service manual procedures. If the procedure is not within your capabilities or you do not have the correct tools, have a Harley-Davidson dealer perform the installation. Improper installation of this kit could result in death or serious injury. (00333b)

NOTE

This instruction sheet references service manual information. A service manual for your model motorcycle is required for this installation and is available from a Harley-Davidson Dealer.

⚠ WARNING

The lower saddlebag support bracket is not a footrest or step. Using the support bracket as either a footrest or step can cause the supports to separate from the docking points and fall to the road, which could cause loss of control and death or serious injury. (00405e)

REMOVAL

1. Open the saddlebag, then pull the latch knob and rotate it one-quarter turn. The latch on the back of the bag should swing into the open position.
2. Pull the saddlebag toward the rear of the vehicle to disengage the three docking points.
3. Lift the saddlebag up and swing the lower support bracket off of its docking point.
4. Remove the two screws and washers holding the lower support bracket to the saddlebag and remove the lower support bracket.

NOTE

Perform the following procedure on one side of the motorcycle at a time. This will eliminate the need for raising the rear end of the motorcycle. If it is necessary to remove both shocks at once, place the motorcycle on a center stand with the rear wheel raised off the ground.

Remove Shock Absorbers - 2006-2007 Models

1. See Figure 1. Remove lower shock mount bolt (1) and jam nut (7) (only used on left side). Save jam nut for installation.
2. Remove upper shock mount bolt (2), outer washer (8), chrome cover (4), inner washer (3), shock absorber (5) and spacer (6).
3. Discard chrome covers, (if equipped) and all hardware except jam nut (7).

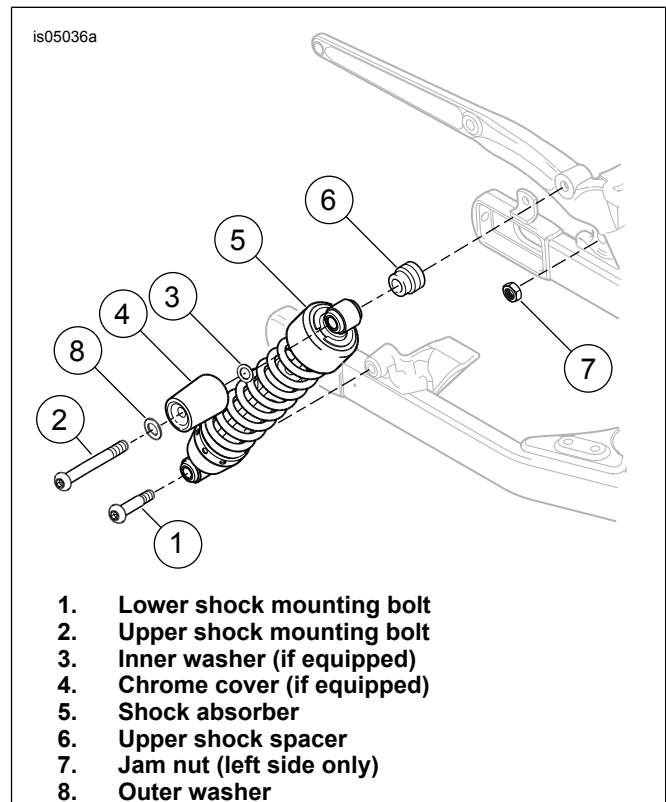


Figure 1. Remove Stock Shock Absorber (2006-2007 Models)

Remove Shock Absorbers - 2008-Later Models

1. See Figure 2. Remove lower shock mount bolt (1) and jam nut (6) (only on left side). Save jam nut for installation.

2. Remove acorn nut (2), inner washer (3), chrome cover (4), outer washer (8) and shock absorber (5).
3. Discard chrome covers, (if equipped) and all hardware except jam nut (6).
4. Remove and discard shock stud assembly (7).
4. Hand-tighten the upper shock bolt so that the arm of the shock spacer is held in position but can be easily adjusted.
5. Install the shock to the rear fork with the new lower shock spacer (4) between the shock and the rear fork. Install jam nut (8). Tighten the lower shock bolt to 41–61 N·m (30–45 ft-lbs).
6. Repeat Steps 1-5 for the left side shock spacer.

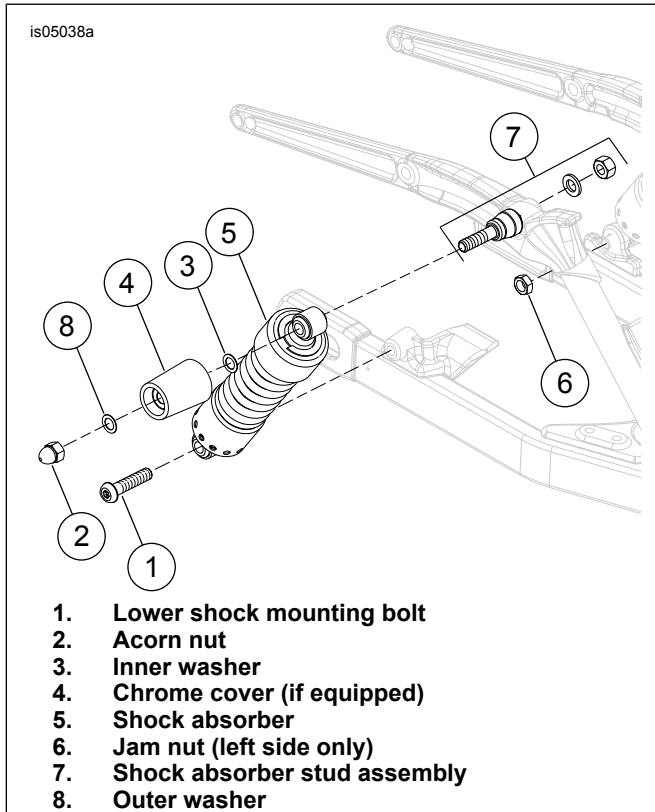


Figure 2. Remove Stock Shock Absorber (2008-Later Models)

INSTALLATION

Install Upper Shock Spacer Assembly - 2006-2007 Models

1. See Figure 3. Assemble a screw (2) and docking point (3) to each upper shock spacer (1) as shown. Tighten to 28–37 N·m (21–27 ft-lbs).
2. Use a 1/2-13 inch tap to clean the tapped upper shock mounting hole on the frame of any Loctite or debris.

NOTE

The upper shock bolts will be tightened to specific torques after the shock spacer is installed and all saddlebag supports are aligned.

The saddlebag installation procedure must be performed immediately following Step 6 to prevent the Loctite from curing before the upper shock bolt is tightened to the specified torque.

3. Install the new 4-inch upper shock bolt (6) with thin washer (5) through the upper eye of the shock and slide on the new shock spacer (1), as shown, orienting the arm of the upper shock spacer so that it is directly behind the shock.

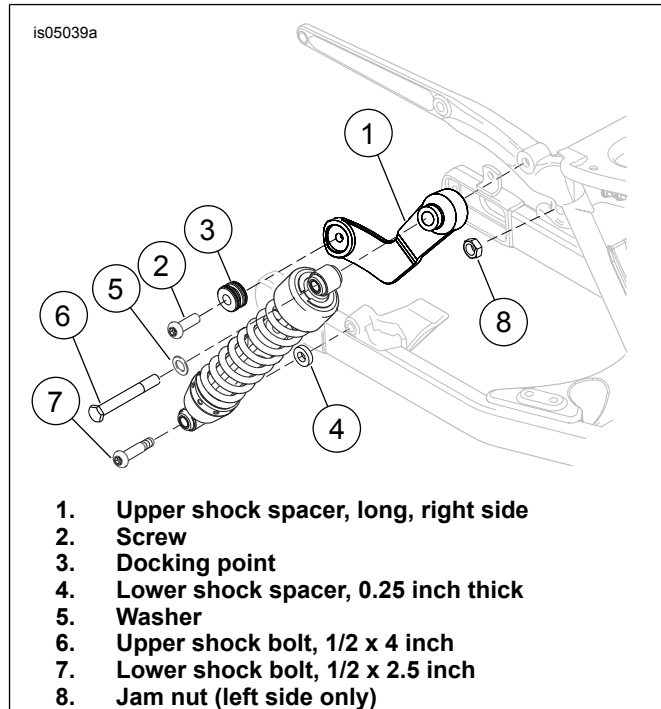


Figure 3. Install Shock Absorber (2006-2007 Models)

Install Upper Shock Spacer Assembly - 2008-Later Models

NOTE

The upper shock fasteners will be tightened to specific torques after the shock spacer is installed and all saddlebag supports are aligned.

The saddlebag installation procedure must be performed immediately following Step 6 to prevent the Loctite from curing before the upper shock bolt (6) is tightened to the specified torque.

1. See Figure 4. Assemble a screw (2) and docking point (3) to each upper shock spacer (1) as shown. Tighten to 28–37 N·m (21–27 ft-lbs).
2. Install the new upper shock bolt (6) with thin washer (5) through the upper eye of the shock and slide on the new right side shock spacer (1), as shown, orienting the arm of the upper shock spacer (1) so that it is directly behind the shock.
3. Install thick washer (9) and nut (4) to upper shock bolt (6).
4. Tighten the upper shock bolt so that the arm of the shock spacer is held in position but can be easily adjusted.

5. Install shock absorber to the rear fork with the new lower shock bolt (7) and shock spacer (8) between the shock and the rear fork. Install jam nut (10). Tighten the lower shock bolt to 41–61 N·m (30–45 ft-lbs).
6. Repeat Steps 1-5 for the left side shock spacer.

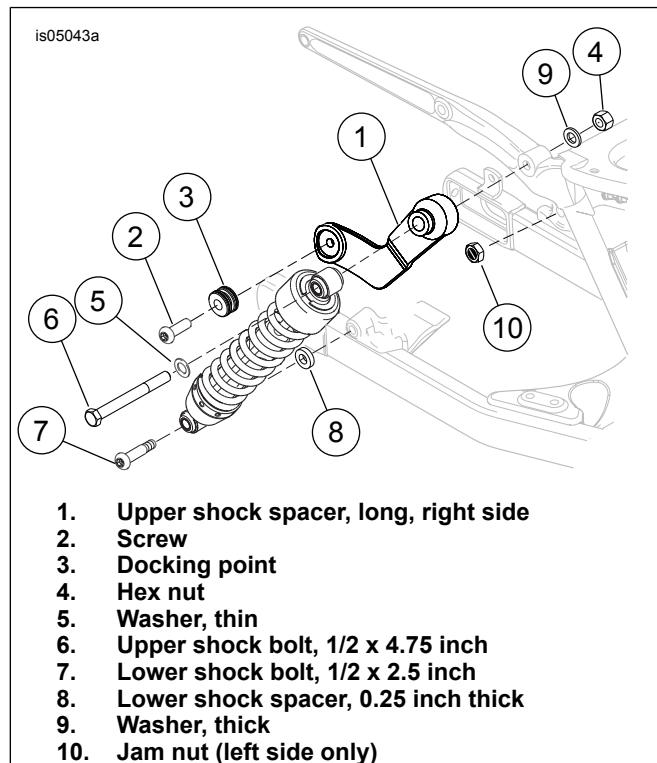


Figure 4. Install Shock Absorber (2008-Later Models)

Install Brackets and Saddlebags

1. See Figure 5. Install the lower support bracket (1 or 3) with the isolator (6) to the saddlebag. **For FXDF, FXDFSE and 2010 FXDWG Models:** Install spacers (7), fender washers (5), lockwashers (9) and screws (10). Do not fully tighten. **For All Other Models:** Fasten with screws (8), fender washers (5) and lockwashers (9). Do not use spacers (7). Do not fully tighten.

2. Tip the saddlebag forward and align the large diameter of the keyhole end of the lower support arm with the third point docking point. Rotate the saddlebag down so that the docking points on the strut cover slide into the slots of the bracket on the back of the saddlebag.
3. Slide the saddlebag forward on the vehicle ensuring that it is fully seated onto all three docking points.
4. Move the bag as far forward as possible and rotate the latch knob one-quarter turn. If the bag is seated properly, the knob should pop back in. Check behind the bag and verify that the latch is in the closed position.

NOTE

If the saddlebag is not seated squarely to the lower support bracket, loosen the screws securing the lower support bracket to the saddlebag back and slide the support bracket forward or backward in its mounting slots. Tighten screws to 7–10 N·m (60–90 in-lbs) after seating the saddlebag.

5. Adjust the lower support bracket so it has maximum engagement in the docking point. Tighten screws to 7–10 N·m (60–90 in-lbs).
6. Tighten the upper shock bolt to the specified torque in the service manual.
7. Repeat procedure for the opposite saddlebag.

MAINTENANCE

In time, the docking points may wear, causing the lower front support brackets to become loose. Use the following procedure to tighten the lower front support brackets:

1. Loosen the docking hardware.
2. Rotate the docking points clockwise approximately 45 degrees.
3. Tighten the docking hardware to 28–37 N·m (21–27 ft-lbs).

This procedure can be repeated up to three times before replacement of the docking points is recommended.

SERVICE PARTS

is05873a

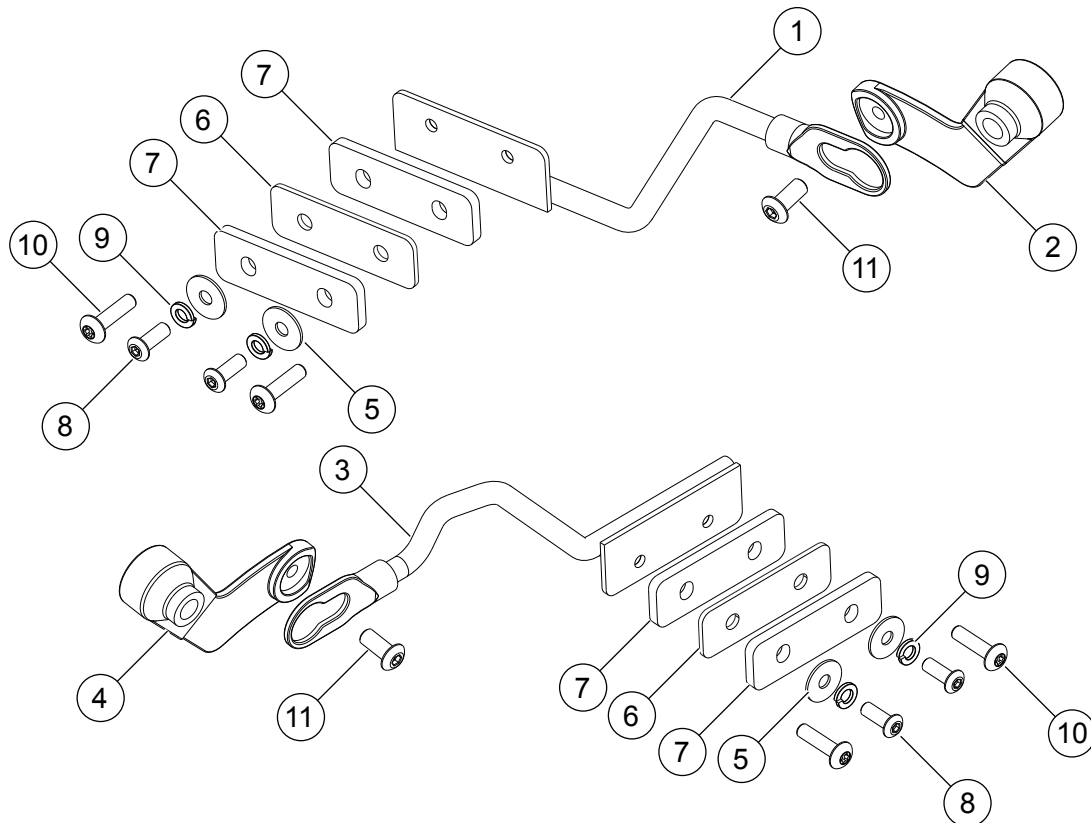


Figure 5. Service Parts: Lower Support Bracket

Table 1. Service Parts Table

Kit	Item	Description (Quantity)	Part Number
Kit 90637-06B (includes items 1 and 2 and 5-11)			
	1	Lower support bracket, right	Not Sold Separately
	2	Bracket, upper right	Not Sold Separately
Kit 90642-06C (includes items 3 and 4 and 5-11)			
	3	Lower support bracket, left	Not Sold Separately
	4	Bracket, upper left	Not Sold Separately
	5	Fender washer (2)	6788
	6	Isolator	Not Sold Separately
	7	Spacer (2) (for FXDF, FXDFSE and 2010 FXDWG models only)	Not Sold Separately
	8	Screw, 5/16-13 x 7/8 inch (2)	4359
	9	Lockwasher (2)	7041
	10	Screw, 5/16-18 x 1-3/8 inch (2) (for FXDF, FXDFSE and 2010 FXDWG models only)	4778
	11	Screw, 3/4-16 x 7/8 inch	4097