



# INSTRUCTIONS

J03375

2004-07-15



## DETACHABLE DOCKING KIT

### GENERAL

#### Kit Number

53450-97D

#### Models

This Detachable Docking Kit mounts in Position 2 (see Figure 1), and fits all 1997 and later FL Touring model motorcycles **except** FLHTC/I (Electra Glide® Classic) and FLHTCUI (Ultra Classic® Electra Glide).

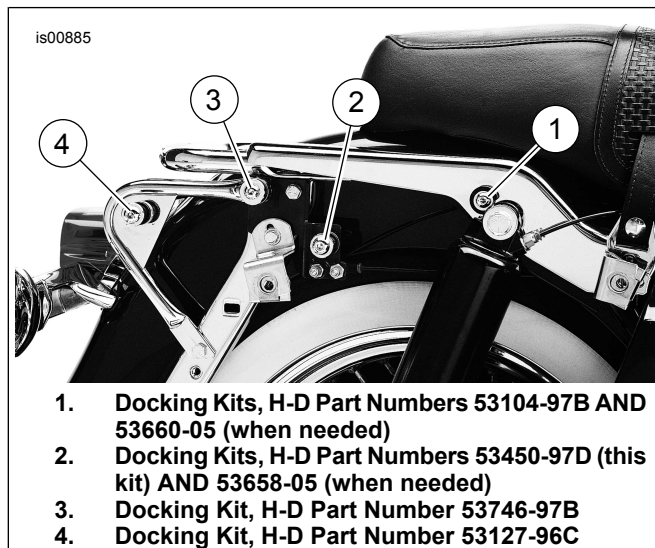


Figure 1. Docking Points

#### Additional Parts Required

For 1994 through 1996 models, Kit Number 53658-05, consisting of two 5/16-18 locknuts, will also be needed. This kit is available separately from a Harley-Davidson dealer.

#### ⚠ WARNING

Rider and passenger safety depend upon the correct installation of this kit. Use the appropriate service manual procedures. If the procedure is not within your capabilities or you do not have the correct tools, have a Harley-Davidson dealer perform the installation. Improper installation of this kit could result in death or serious injury. (00333b)

#### NOTE

This instruction sheet references Service Manual information. A Service Manual for your model motorcycle is required for this installation and is available from a Harley-Davidson Dealer.

### Kit Contents

See Figure 6 or Figure 7 and Table 2.

### PREPARATION

1. Refer to the Service Manual and follow the instructions given to remove the saddlebags.
2. Remove the air fitting(s) from the bracket (below the right or left-side frame cover) and discard the bracket.
3. See Figure 2. Remove and discard the three screws shown, from each side of the motorcycle. Keep the washer from the bottom screw for saddlebag and bracket installation.

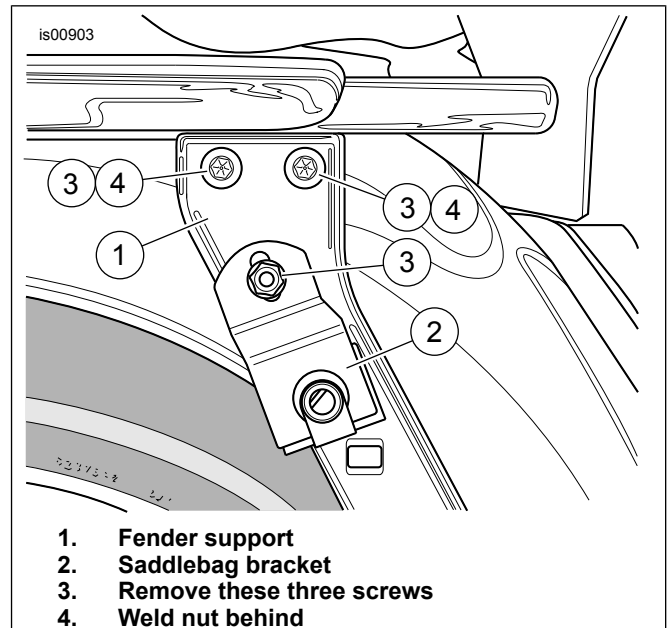


Figure 2. Removal of Original Equipment Screws (Left Side Shown)

### INSTALLATION

#### NOTE

The installation instructions and hardware used will differ, depending upon whether this kit is installed alone or with the Detachable Docking Kits (Part Numbers 53746-97B and 53127-96C) in Positions 3 and 4 (see Figure 1). Follow the appropriate instructions to fit your situation.

1. See Figure 6 or Figure 7. Assemble the docking hardware as shown.

a. Position the mounting bracket (1) on one side of the motorcycle. Note that the mounting brackets are side-specific. The letters stamped near the lower holes must face outward, and identify the front (F) and rear (R) positions.

b. **Without Docking Kit installation at positions 3 and 4** (see Figure 6 ): Install the mounting bracket using a 5/16-18 x 1-inch (25 mm) long screws (8) in the upper two holes, with 1/8-inch (3.2 mm) thick spacers (5) placed on each screw, between the mounting bracket (1) and the original equipment saddlebag support bracket (A). **With Docking Kit installation at positions 3 and 4** (see Figure 7 ): Install the mounting bracket using a 5/16-18 x 1-inch (25 mm) long screw (8) from **this** kit in the upper front hole, and a 5/16-18 x 2-1/4 in. (57 mm) long screw and lockwasher (D), docking point (C) and 0.386 in. (9.8 mm) thick spacer (E) **from Docking Kit 53746-97B** in the upper rear hole, through the rear docking bracket (B) **from Docking Kit 53127-96C** placed between the mounting bracket (1) and the original equipment saddlebag support bracket (A).

c. Finger-tighten both screws.

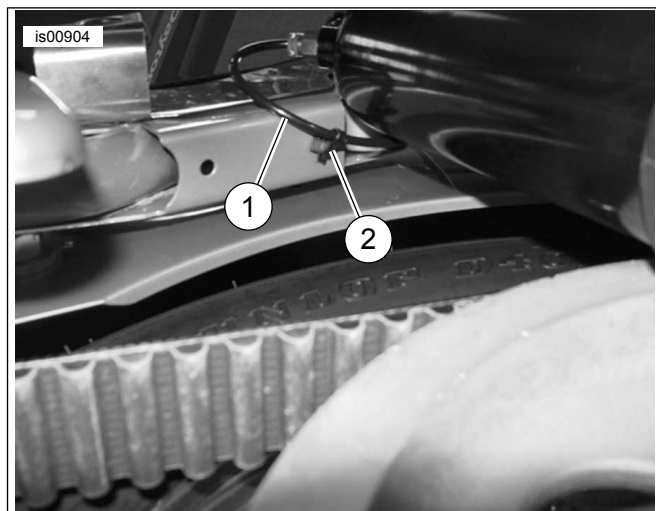
2. Install a 1/4-20 screw (item 9 or 11, depending on model) and the washer (F, saved in Step 3) through the slot in the saddlebag mounting bracket.

3. **For FLHR, FLHT or FLTR models:** Insert the threads through the bottom hole of the mounting bracket (1), right under the screws installed in Step 4b. **For FLHRC or FLHRS models:** Place a 9/16-inch (14.3 mm) thick spacer (12) onto the screw threads, and insert the threads through the bottom hole of the mounting bracket (1), right under the screws installed in Step 4b.

4. Place a 1/8-inch (3.2 mm) thick spacer (10) onto the screw threads, and insert the threads through the saddlebag support bracket (A) and into the clip nut. Torque the screw to 10-14 ft-lbs (13.6-19.0 Nm).

5. Torque both upper screws to 15-19 ft-lbs (20.3-25.8 Nm).

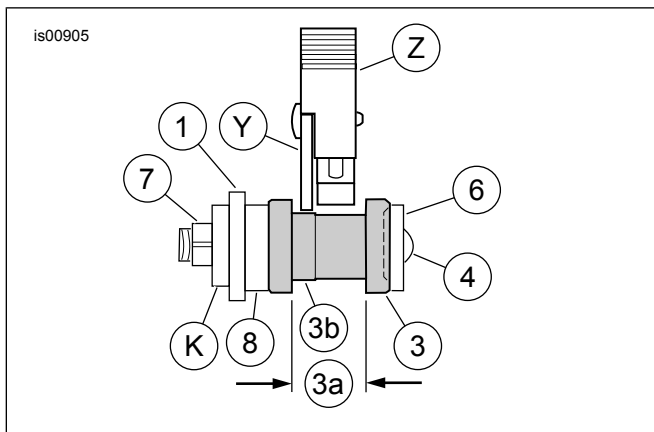
6. Repeat Steps 4 through 8 for the opposite side.



- 1. Air hose
- 2. Tie wrap

Figure 3. Air Hose Routing on 2003 and Later Models

7. For **1997 through 2001** models, fasten the two air fittings through the lowest two holes (marked "F" and "R") in the right-side bracket. **2002** models have only one air fitting, which must be mounted in the hole marked "F" on the **RIGHT-HAND** side bracket. For **2003 and later** models, see Figure 3. Remove the **left-side** shock-absorber air hose from the air valve, and reroute it underneath the top shock mount. Locate the rearmost unused hole in the underside of the fender strut, just in front of the left shock. Use the tie wrap (2) to anchor the air hose to this hole and prevent it from getting kinked or pinched. Re-install the air hose to the air valve, and install the air valve in the hole marked "F" on the **LEFT-HAND** side bracket. Add air to the shock absorbers according to the instructions in the Service Manual.
8. See Figure 4, Table 1, and Figure 6 or Figure 7. Place a washer (6) onto the threads of a button head screw (4) from **this** kit. Place a docking point (3), oriented as shown, over the screw threads, followed by a spacer (8).
9. For **1994 through 1996** models, insert the screw threads through the rearmost hole (H) in the mounting bracket (1) as shown. For **1997 and later** models, insert the screw threads through the frontmost hole (H) in the mounting bracket (1) as shown. Insert the screw threads through the larger hole in bracket 53805-99 (item K, part of the Rack or Sissybar Upright Kit) and fasten loosely in place with a locknut (7). Leave the locknut slightly loose for docking-point adjustment in the next step.

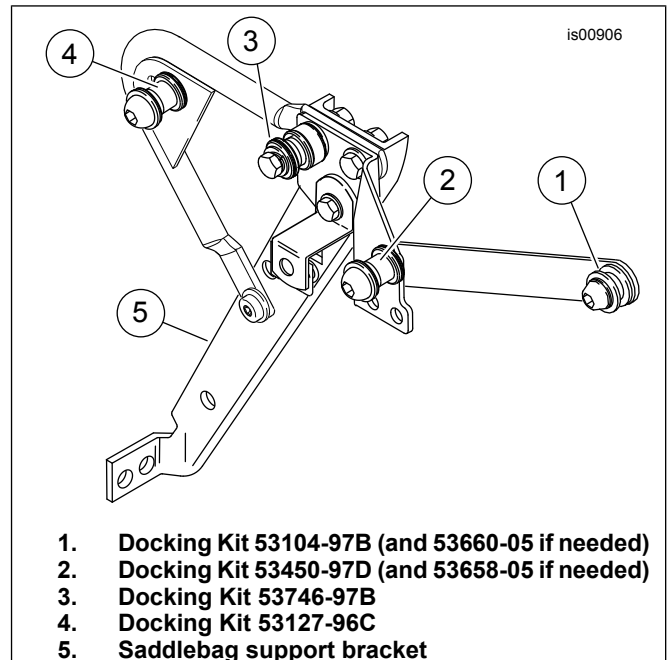


**Figure 4. Proper Alignment of Latch in Right-Side Docking Point (Viewed from the Rear)**

**Table 1. Proper Alignment of Latch in Right-Side Docking Point (Viewed from the Rear)**

Item	Description
<b>Numbers and letters are same as in Service Parts list.</b>	
1	Mounting bracket
3	Docking point
3a	Docking point neck
3b	Raised surface of docking point
4	Button head screw
6	Flat washer
7	Lock nut
8	Spacer
K	Bracket from rack or upright kit
<b>Not in Service Parts list.</b>	
Y	Luggage rack or sissybar upright side plate
Z	Luggage rack or sissybar upright latch

13. See Figure 5. Fasten the detachable passenger backrest uprights or luggage rack to the docking points as described in the instruction sheet for **that** accessory. Push the forward notches of the accessory completely into the docking points in position (1), then fasten the rear notches into the docking points in position (2). Torque the fasteners from Step 12 to 45-47 ft-lbs (61.0-63.7 Nm).



1. Docking Kit 53104-97B (and 53660-05 if needed)
2. Docking Kit 53450-97D (and 53658-05 if needed)
3. Docking Kit 53746-97B
4. Docking Kit 53127-96C
5. Saddlebag support bracket

**Figure 5. Touring Detachable Docking Point Kits (Right Side Shown)**

# SERVICE PARTS

is00907

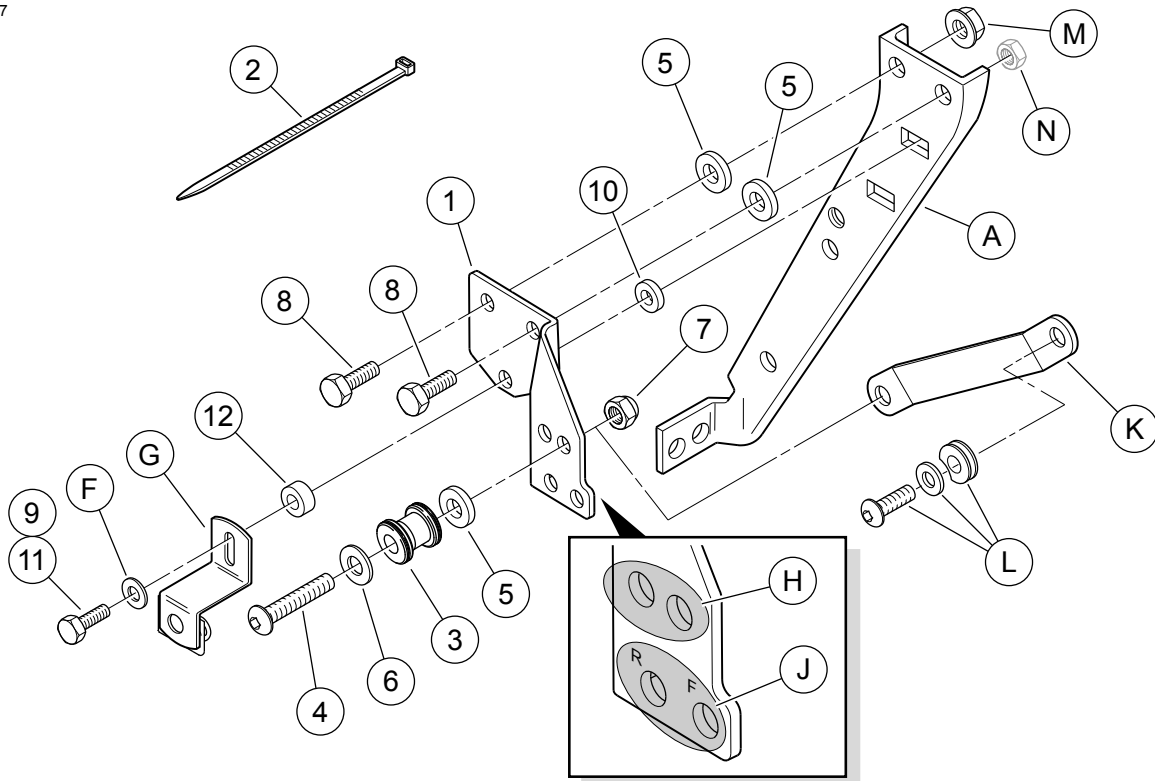


Figure 6. Installation WITHOUT Docking Kits 53127-96C and 53746-97B

is00908

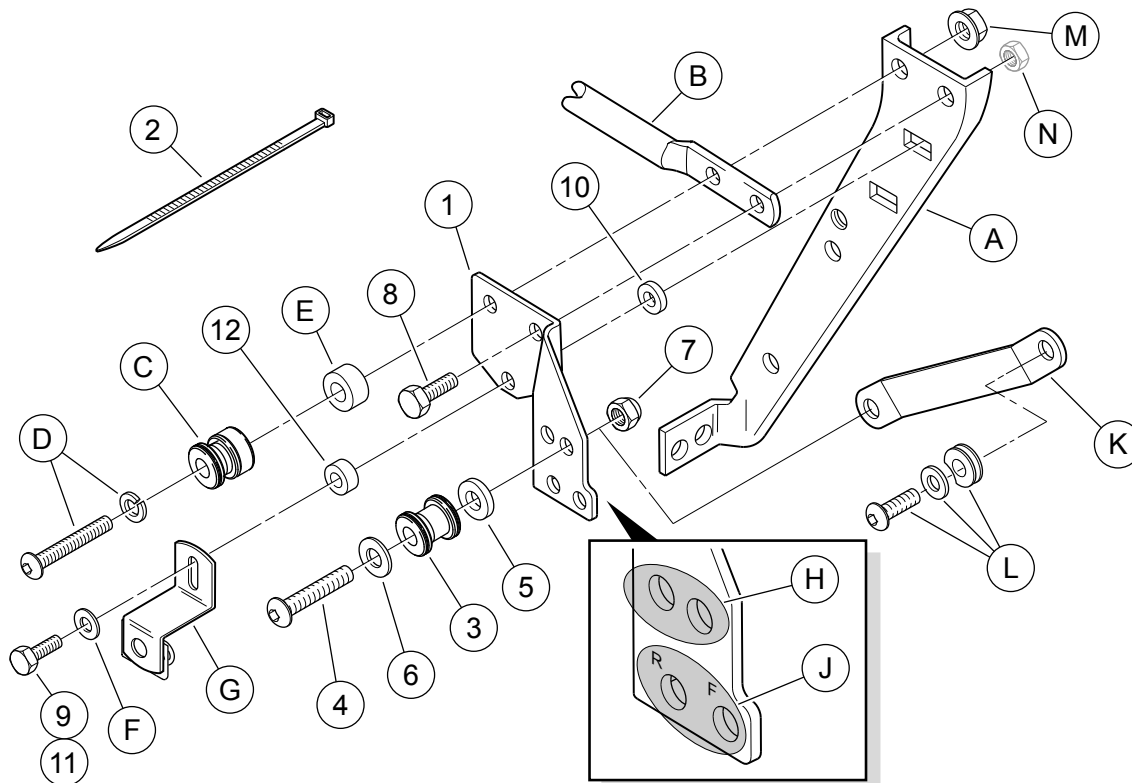


Figure 7. Installation WITH Docking Kits 53127-96C and 53746-97B

**Table 2. Service Parts Table**

<b>Item</b>	<b>Description (Quantity)</b>	<b>Part Number</b>
1	Mounting bracket, right side Mounting bracket, left side (not shown)	53759-96B 53758-96C
2	Tie wrap	10073
3	Docking point (2)	53684-96A
4	Screw, button head, hex socket, 3/8-16 x 2 in. (51 mm) long (2)	4215
5	Washer, hardened, 3/8 in. I.D., 1/8 in. (3.2 mm) thick (6)	6532
6	Flat washer, chrome, 3/8-in. I.D., 1/16 in. (1.6 mm) thick (2)	94067-90T
7	Hex locknut, Nylok, thin, 3/8-16 (2)	7667
8	Cap screw, hex head, 5/16-18 x 1 in. (25.4 mm) long (4)	4017
9	Cap screw, hex head, 1/4-20 x 7/8 in. (22.2 mm) long (2) (for all models except FLHRC/I and FLHRS/I)	3802W
10	Spacer, 1/4 in. I.D., 1/8 in. (3.2 mm) thick (2)	5735
11	Cap screw, hex head, 1/4-20 x 1-1/2 in. (38.1 mm) long (2) (for models FLHRC/I and FLHRS/I)	2872W
12	Spacer, 1/4 in. I.D., 9/16 in. (14.3 mm) thick (2) (for models FLHRC/I and FLHRS/I)	5839
<b>Items mentioned in text, but not included in kit:</b>		
<b>Item</b>	<b>Description</b>	
A	Original equipment saddlebag support bracket	
B	Rear docking-point bracket from Docking Kit 53127-96C	
C	Docking point from Docking Kit 53746-97B	
D	2-1/4 inch (57 mm) long button-head screw and lockwasher from Docking Kit 53746-97B	
E	0.385 in. (9.8 mm) thick spacer from Docking Kit 53746-97B	
F	Original equipment spacer	
G	Original equipment Saddlebag mounting bracket	
<b>Notes:</b>		
H	The docking point on each side must be mounted in the front (forward) hole for 1997 and later models, and in the back (rearward) hole for 1994 through 1996 models.	
J	For <b>1997 through 2001</b> models, the two air fittings mount in the two bottom holes. For <b>2002</b> models, mount the single air fitting in the front (forward) hole on the RIGHT-SIDE bracket. For <b>2003 and later</b> , the air fitting must be relocated to the forward hole on the LEFT-SIDE bracket.	
K	Bracket from Luggage Rack or Sissybar Upright Kit.	
L	Detachable Docking Kit 53104-97B	
M	Lock nut from kit 53658-05 (for <b>1994 through 1996</b> models). Weld nut on saddlebag support bracket (A) (for <b>1997 and later</b> models).	
N	Weld nut on saddlebag support bracket (A)	