



# INSTRUCTIONS

J04290

2006-11-07



## CHROME REAR SADDLEBAG GUARD KIT

### GENERAL

#### Kit Number

49291-07

#### Models

For model fitment information, please see the P&A Retail Catalog or the Parts and Accessories section of [www.harley-davidson.com](http://www.harley-davidson.com) (English only).

#### ⚠ WARNING

Rider and passenger safety depend upon the correct installation of this kit. Use the appropriate service manual procedures. If the procedure is not within your capabilities or you do not have the correct tools, have a Harley-Davidson dealer perform the installation. Improper installation of this kit could result in death or serious injury. (00333b)

#### NOTE

This instruction sheet references Service Manual information. A Service Manual for your model motorcycle is required for this installation and is available from a Harley-Davidson Dealer.

### Kit Contents

See Figure 2 and Table 1.

### INSTALLATION

#### NOTE

The existing stock lower saddlebag guards must be removed and replaced with parts included in the kit.

1. Remove the seat from the motorcycle. Refer to the SEAT section of the appropriate Service Manual.
2. Remove the saddlebags. Refer to SADDLEBAG REMOVAL in the Service Manual.
3. See Figure 1. Gently pull one side cover (1) from the frame downtubes (no tools are required).
4. Support the muffler with a block of wood. Remove and save the two 5/16-18 x 1/2 inch long hex head capscrews and washers that secure the muffler with the lower saddlebag guard rail.

5. Remove and save the two 5/16-18 x 1 inch long pan head screws (7) and nuts (8) that hold the lower saddlebag guard to the rear fender support bracket. Using a T-40 TORX® drive head, remove and save the 3/8-16 screw (9) and 3/8-16 locknut (10) fastening the front flange to the vertical frame tube. Remove and save the rubber mount (not shown) from the lower saddlebag guard. Remove and discard the lower saddlebag guard (4).

6. Repeat Steps 3 through 5 for the opposite side.

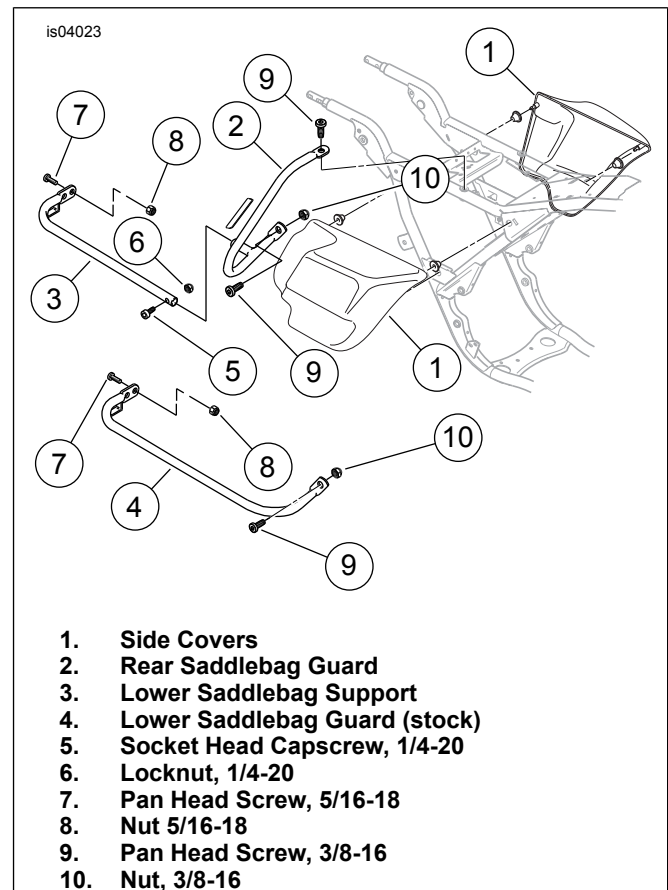


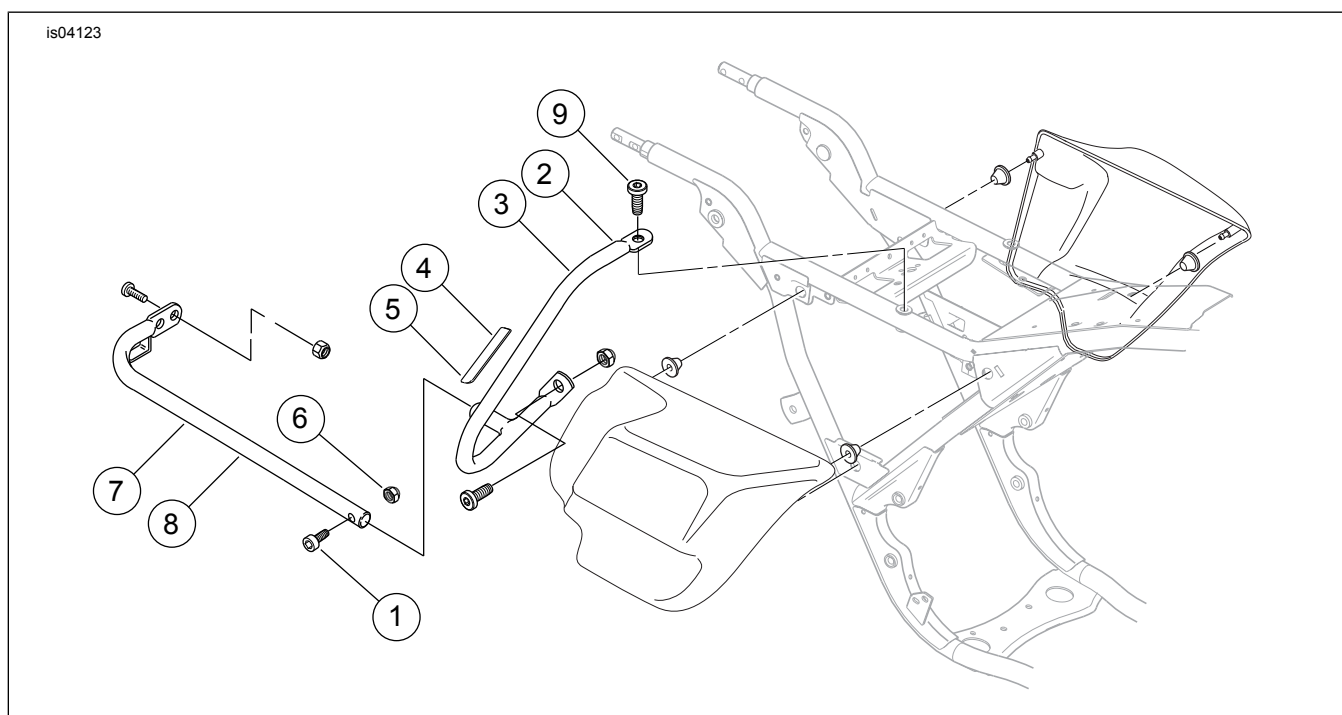
Figure 1. Saddlebag Support Removal

7. See Figure 1. Obtain either the left or right lower saddlebag support. Reassemble, but do not tighten the two 5/16-18 x 1 inch long pan head screws (7) and nuts (8) that hold the lower saddlebag support to the rear fender support bracket. Slide in the rubber mount and align the holes over the muffler. Secure the support to the muffler using the two 5/16-18 x 1/2 inch long hex head capscrews and washers removed in Step 5 and loosely tighten.

8. See Figure 2. Take the left or right side rear saddlebag guard (Dresser bar) from the kit and place in position matching the holes in the vehicle frame. The new front side guards are side-specific. Lift the lower support bar and insert the tube end into the receptacle on the rear saddlebag side guard. Obtain a 1/4-20 x 1-1/4 socket head screw (1) and 1/4-20 locknut (6) from the kit. Align the holes and insert the 1/4-20 x 1-1/4 screw through the tubes and loosely thread on the 1/4-20 locknut.
  9. Using a T-40 TORX drive head, thread in a 3/8-16 screw (9) from kit through the top flange of the new side guard and into the horizontal frame tube. Do not tighten.
  10. Insert the 3/8-16 screw through the lower flange and vertical frame tube and thread a 3/8-16 locknut (saved earlier) onto the screw. Do not tighten at this time.
  11. Tighten the upper 3/8-16 screw then the lower 3/8-16 screw and 3/8-16 locknut to 20.3–27.1 N·m (15–20 ft-lbs). Tighten the 1/4-20 screws (5) to 7.9–11.3 N·m (70–100 in-lbs).
  12. Tighten the 5/16-18 screws and the 5/16-18 locknuts to 20.3–27.1 N·m (15–20 ft-lbs). Tighten the two screws that secure the muffler to the lower saddlebag supports to 20.3–27.1 N·m (15–20 ft-lbs).
  13. Repeat Steps 10 through 15 for the opposite side.
  14. Align the barbed studs in the side cover with the grommets in the frame downtubes and push firmly into place (no tools are required).
  15. Refer to SADDLEBAG INSTALLATION in the Service Manual and install the saddlebags.
- ⚠ WARNING**

**After installing seat, pull upward on seat to be sure it is locked in position. While riding, a loose seat can shift causing loss of control, which could result in death or serious injury. (00070b)**
16. Refer to the Service Manual, and follow instructions to install the seat.

## SERVICE PARTS



**Figure 2. Chrome Rear Saddlebag Guard Kit**

**Table 1. Service Parts Table**

Item	Description (Quantity)	Part Number
1	Screw, hex socket head, 1/4-20 x 1-1/4 inch (2)	3601
2	Dresser bar, chrome, right rear	49205-97
3	Dresser bar, chrome, left rear	49201-97
4	Reflector, red, right	59370-98
5	Reflector, red, left	59371-98
6	Nut, hex, nylon insert, 1/4-20 (2)	7686
7	Support, lower saddlebag, left	49194-85
8	Support, lower saddlebag, right	90781-93
9	Screw, panhead tapping TORX, 3/8-16 (2)	3678